

SECTION 28

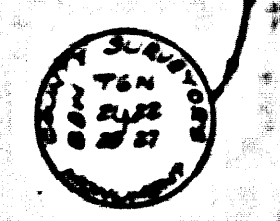
R. 8 W.

SECTION 28

T. 6 N.

SECTION CORNER
Found 2 1/4" dia. iron
rod in
center of
corner
with brass cap
marked
P. B. 464-55
P. B. 464-55

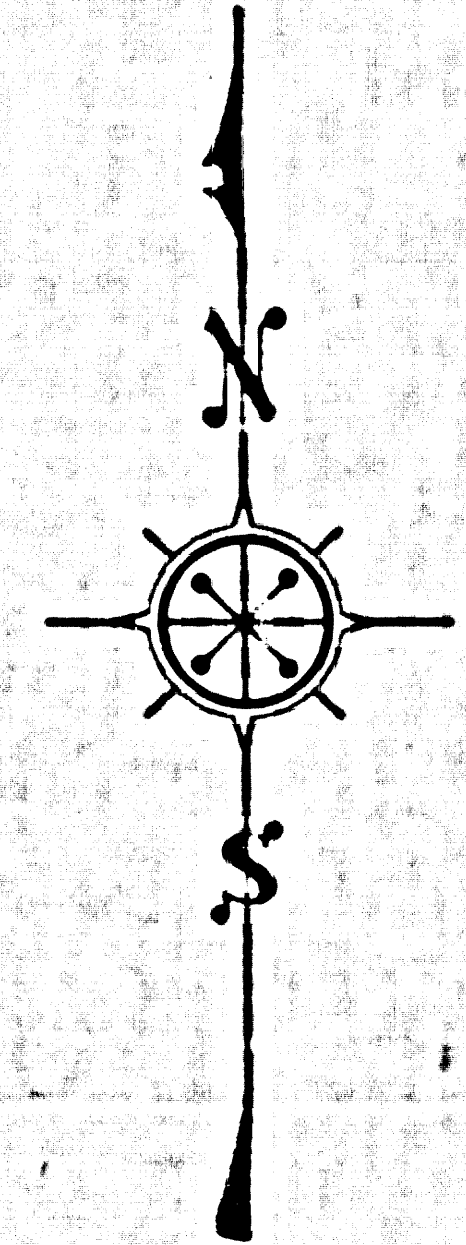
21 22
28 27



PALMDALE E-149-30
1201.76

Q-8
1/4 Section Line
BLVD

28 27



PALMDALE MAP OF BLVD
AVENUE -Q--8
THROUGH
CENTER OF SECTIONS 28 AND 29
T. 6 N. R. 8 W. S.B.M.
COUNTY SURVEYORS MAP NO B-1613
SCALE: 1 INCH = 100 FT.

JOB NUMBER 8299
ALFRED JONES - COUNTY SURVEYOR
SURVEYED JUNE 1940
SURVEYED AT REQUEST OF COUNTY ROAD
COMMISSIONER UNDER RULE 21, ORD. 829
PER LETTER DATED JUNE 7, 1940
BEARINGS ARE BASED ON BEARING OF
SOUTH LINE SECTION 29-T. 6 N. R. 8 W.
AS SHOWN ON C.S. 8733
F. B. 464-55 TO 66
FIELD WORK BY E. A. ROSECRANS
OFFICE WORK BY C. W. COX
CHECKED BY R. R. M'PHERSON

INDEX 67

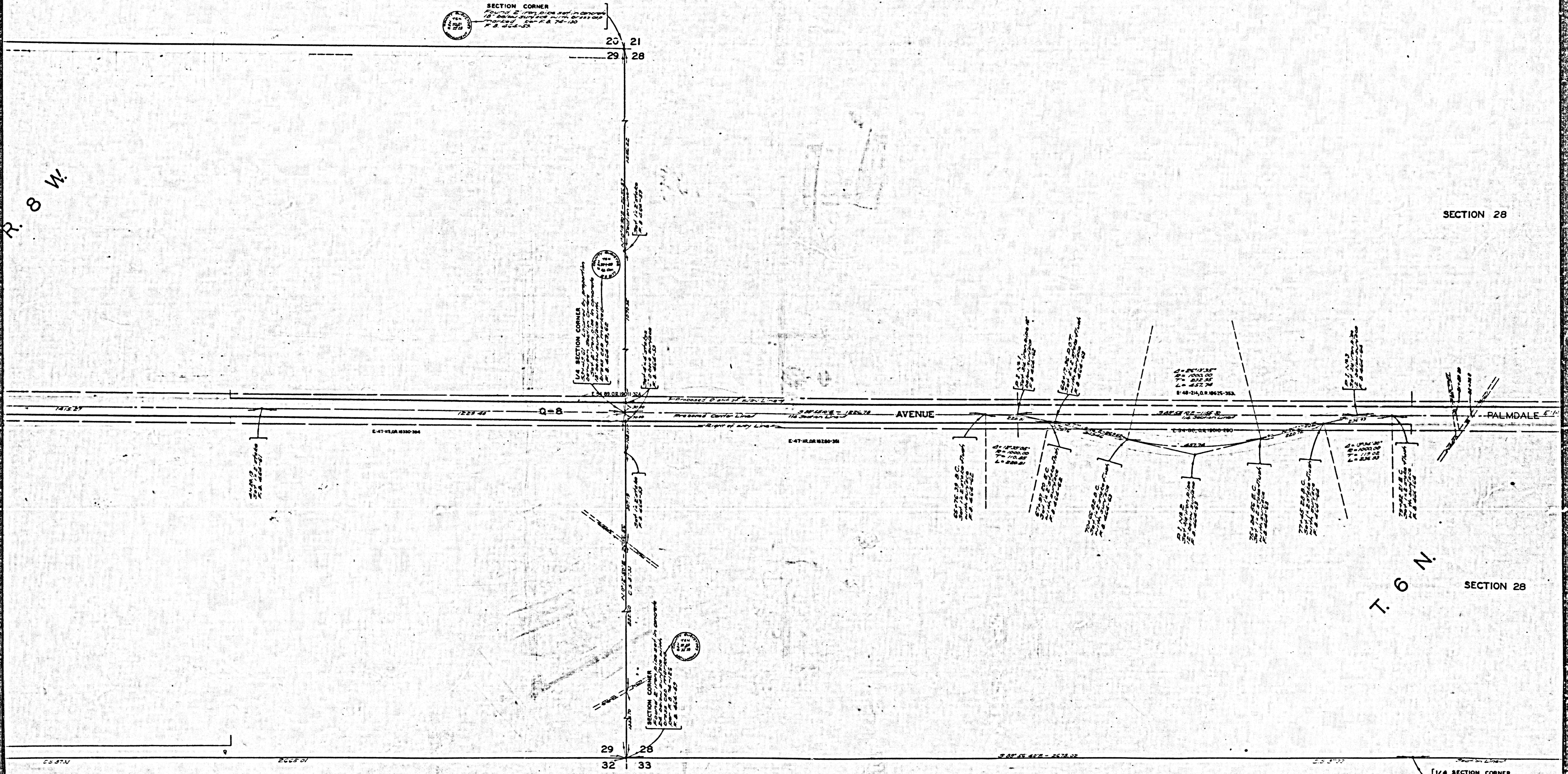
28 27
33 34

CSB-1613
A1 OF A3

1/4 SECTION CORNER
Found 2 1/4" dia. iron
rod in
center of
corner
with brass cap
marked
P. B. 464-55
P. B. 464-55

R. 8 W

SECTION 28



T. 6 N

SECTION 28

CSB-1613
A2 OF A3

1/4 SECTION CORNER
 Located 1/4 mile S 24 feet in
 concrete utility pipe center
 1/4 section surface per R & 74-100
 P. 8, 411-100

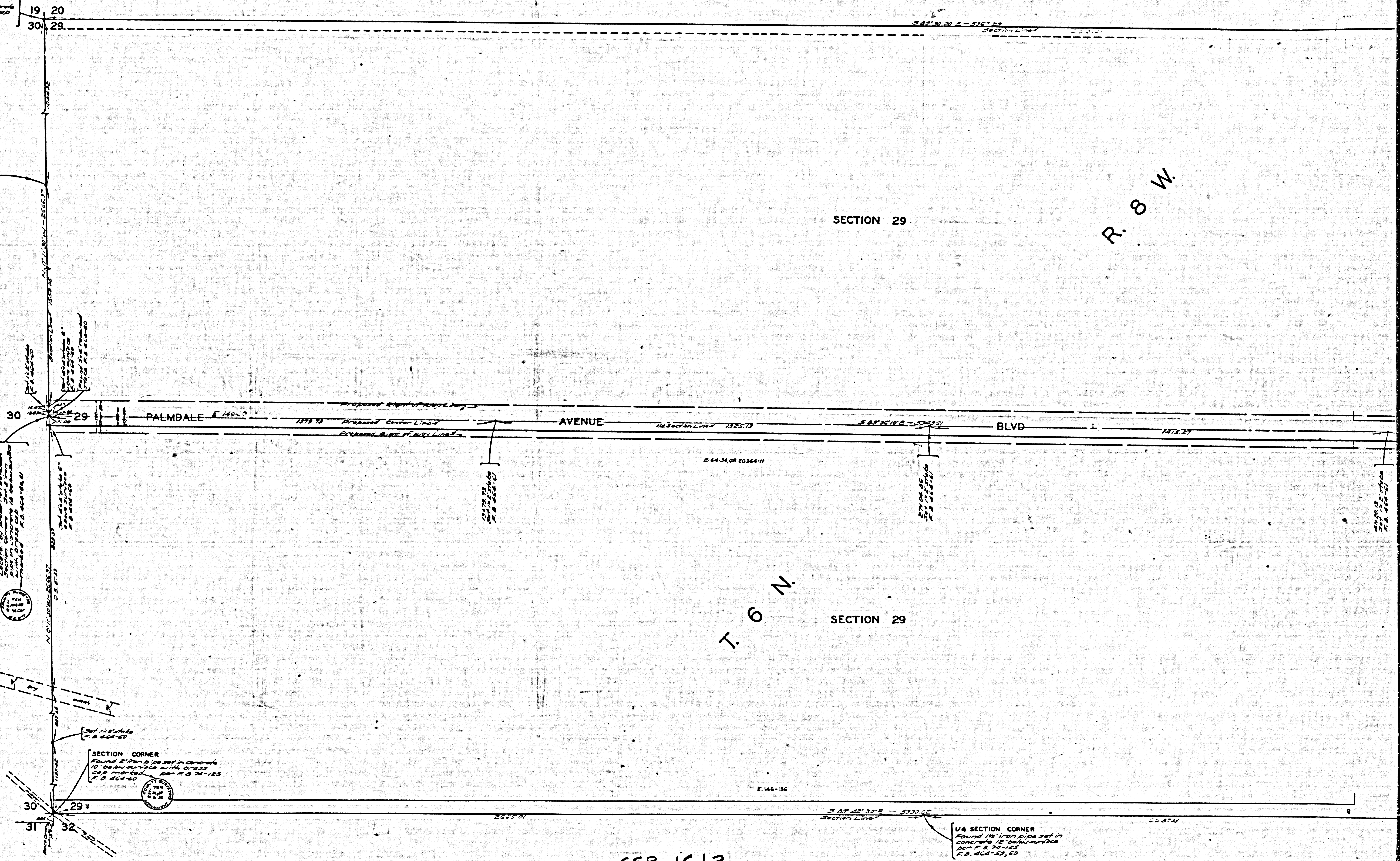
SECTION CORNER
Found 2" iron pipe set in concrete
on 1/4" surface with brass cap
marked - Plan A & 74-125
P. B. 404-60

Set 1/2" white
P. B. 404-60

1/4 SECTION CORNER
Found 2" iron pipe set in concrete
on 1/4" surface with brass cap
marked - Plan A & 74-125
P. B. 404-60

SECTION CORNER
Found 2" iron pipe set in concrete
on 1/4" surface with brass cap
marked - Plan A & 74-125
P. B. 404-60

1/4 SECTION CORNER
Found 2" iron pipe set in concrete
on 1/4" surface with brass cap
marked - Plan A & 74-125
P. B. 404-60



CSB-1613
A3 OF A3