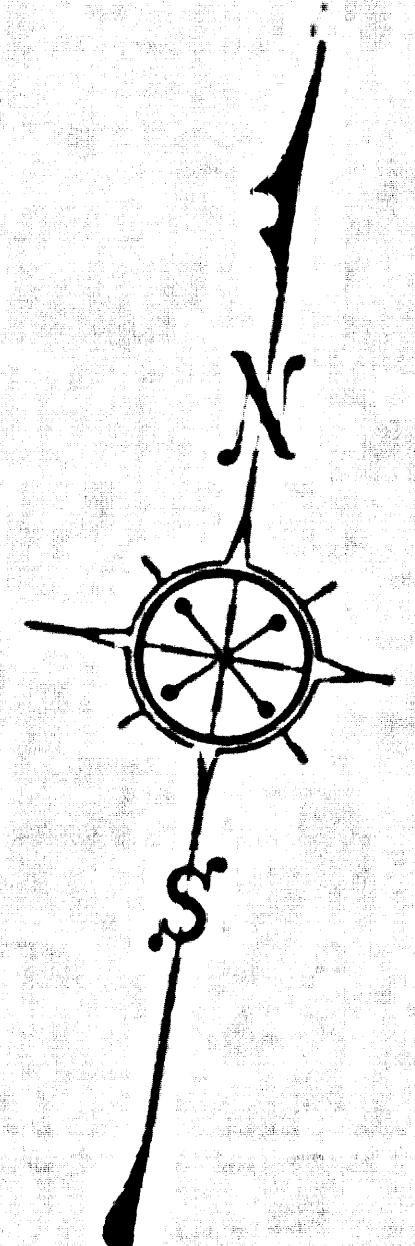
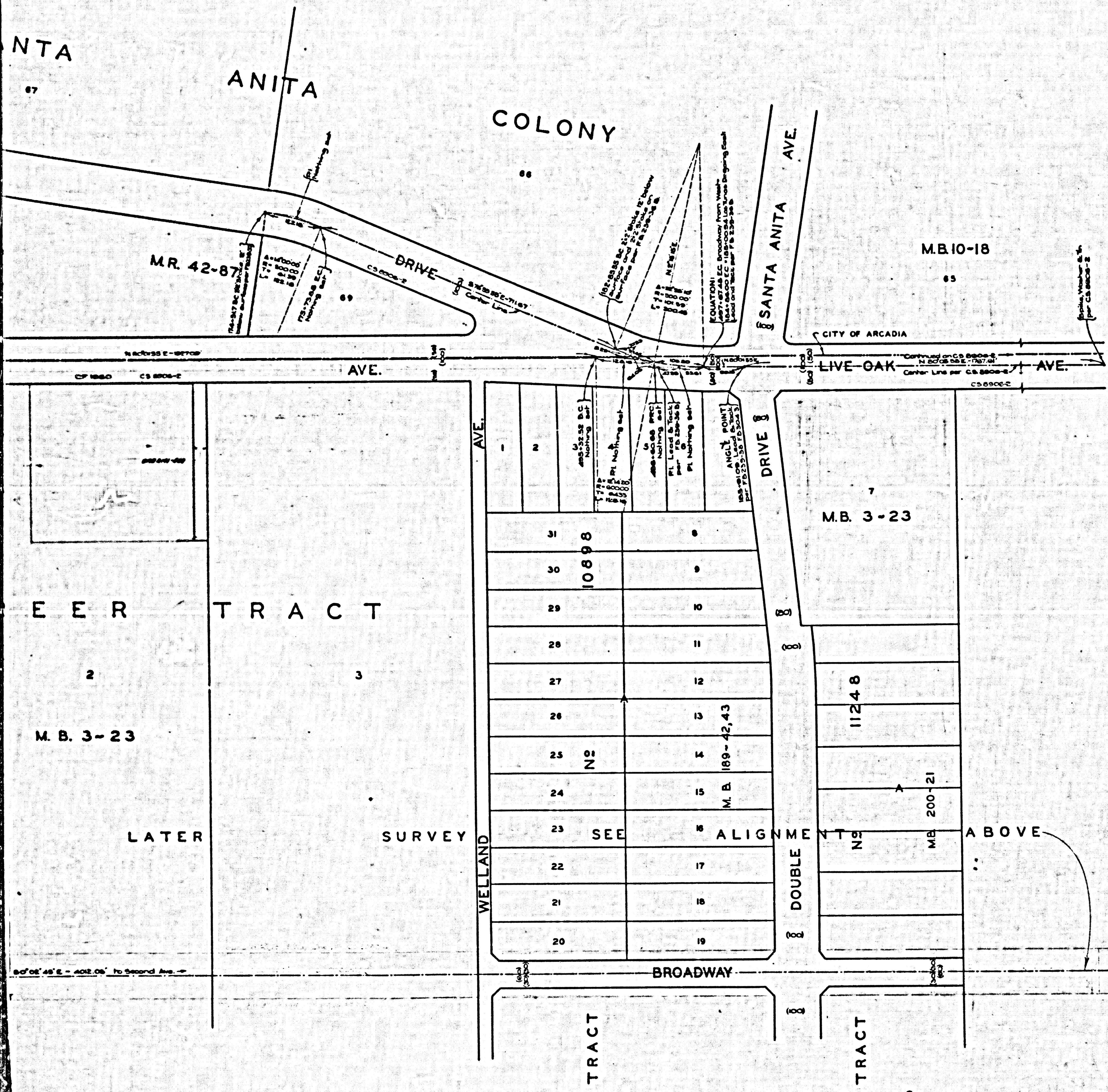


COUNTY SURVEYORS MAP NO. B-1816



MAP OF
 BROADWAY & LIVE OAK AVE.
 FROM
 SUNSET BLVD
 TO
 EL MONTE AVE.

COUNTY SURVEYORS MAP NO. B-1816
 SCALE: 1 INCH = 100 FT.

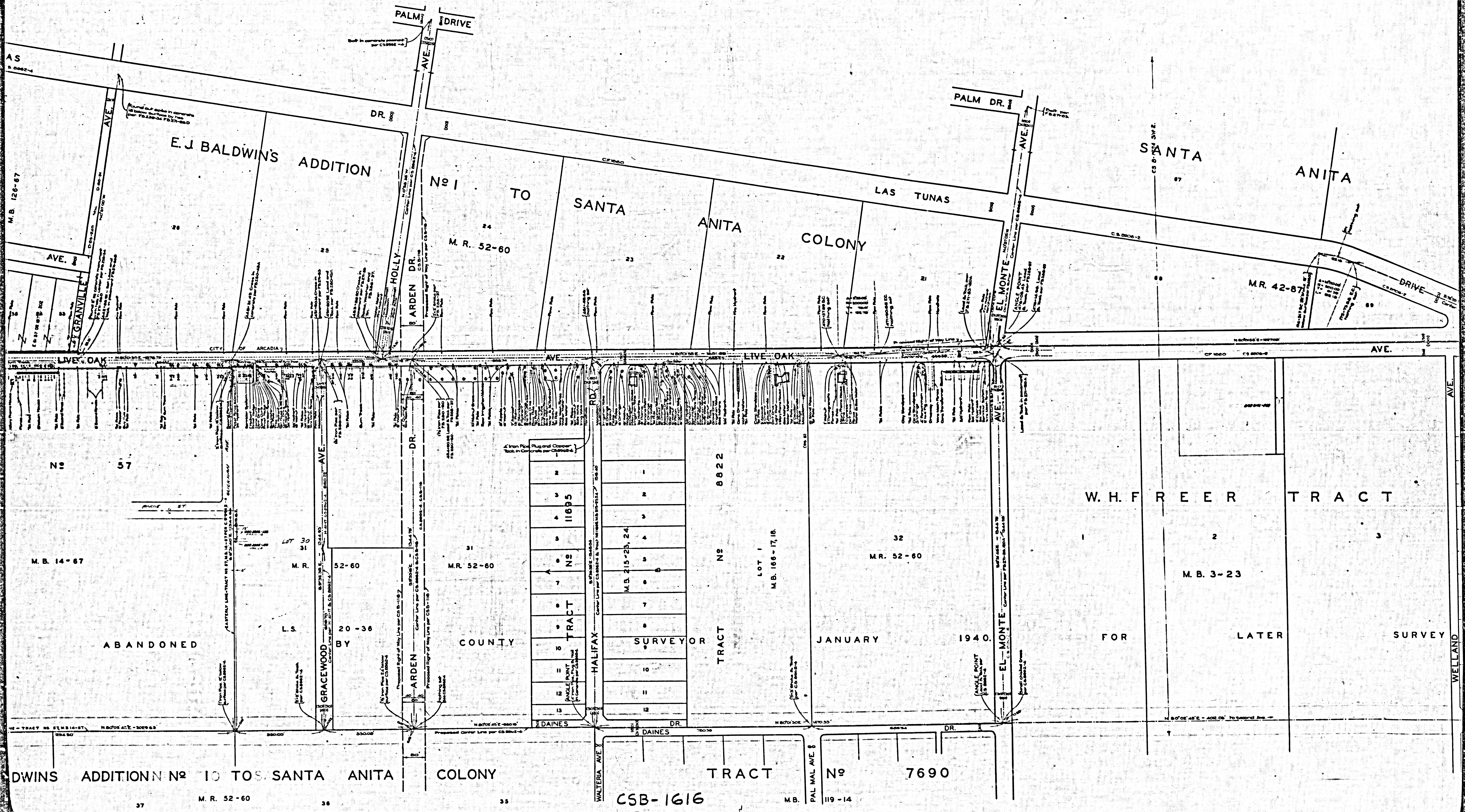
JOB NUMBER 4082
 ALFRED JONES - COUNTY SURVEYOR
 SURVEYED MAR - NOV 1927 & JAN 1940
 SURVEYED UNDER INSTRUCTIONS OF THE
 BOARD OF SUPERVISORS PER ORDER DATED
 AUGUST 30th 1928.
 BEARINGS ARE BASED ON THE BEARING
 OF PASA-HAMBRA BOULEVARD PER SOLAR
 OBSERVATION PER FB 206-50A
 F.B. 271-10A, 82-86C, 121-125, 165-181
 A. SVENSON
 FIELD WORK BY LAMM GILLIVRAY
 H.F. EVANS
 OFFICE WORK BY MUM HIGGINS
 R.W. MALLISTER
 CHECKED BY A.A. ROESER

INDEX 45-44-46

Revised, July, 1940 - L.S. PYLE

CSB-1616
 A1 OF A3

COUNTY SURVEYORS MAP NO. B-1816



CSB-1616
A2 OF A3

MISSION

TRACT

No

6561

M.B. 72-34,35

LAS TUNAS

6641

M.B. 126-67

E.J. BALDWIN'S

LIVE-OAK

LAS TUNAS AVE.

WORKMAN AVE.

BROWLAND AVE.

AVE.

GRANVILLE AVE.

BLVD.

AGRES

LYNDELL

GOLDEN WEST AVE.

TRACT

No

57

M.B. 14-67

VIEW

E.J. BALDWIN'S ADDITION No 2 TO SANTA ANITA COLONY. M.R. 53-4

LOCATION

ABANDONED

M.B. 12-150

BROADWAY

BROADWAY

E.J. BALDWIN'S ADDITION No 2 TO SANTA ANITA COLONY

E. J. BALDWIN'S ADDITION No 10 TO SA

OLIVE

ST.

M. R. 53-4

CSB - 1616
A3 OF A3

M. R. 52-60

