

COUNTY OF LOS ANGELES
 MAP OF
FIRE CISTERN SYSTEM PIPE LINE
 IN
 TOPANGA CANYON BLVD.
 FROM
 FERNWOOD AND PACIFIC DRIVE
 TO
 CHENEY DRIVE

COUNTY SURVEYORS MAP NO. B-1626
 SHEET NO. 2 OF 3 SHEETS
 SCALE = 1 INCH = 40 FT.

JOB NUMBER 5211
 ALFRED JONES - COUNTY SURVEYOR
 SURVEYED JULY 1946 - JANUARY 1947

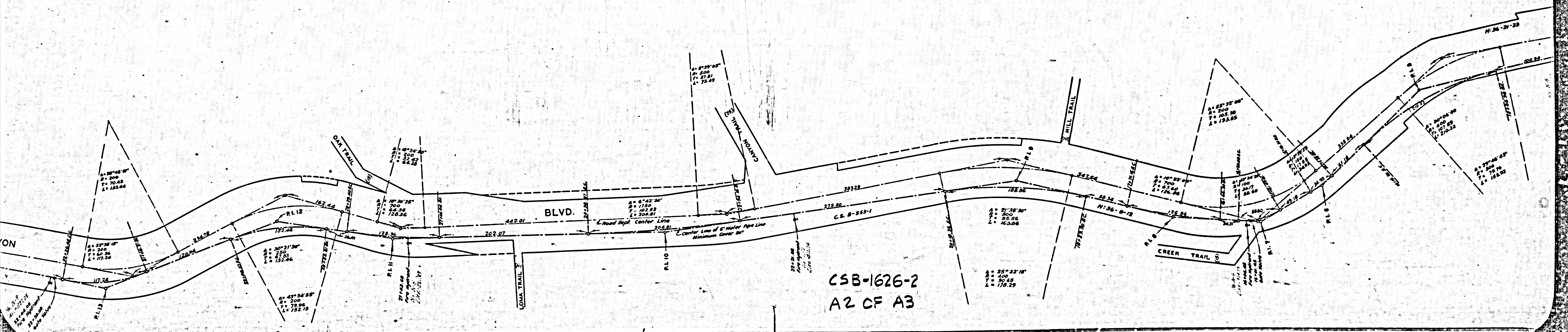
SURVEYED ON REQUEST OF THE CHIEF MECHANICAL
 ENGINEER UNDER SEC. 79 ORD. 4099, BY LETTER DATED
 JUNE 24, 1946

F. B. 1215 - 19 - 48
 FIELD WORK BY F. L. BLANCHARD
 OFFICE WORK BY A. A. ROESER
 CHECKED BY C. E. DROWN
 A. A. ROESER

I M 144-097

*Note: The pipe line in the section shown on Sheets
 2 and 3 of this map is laid at an average depth of
 30' below the pavement surface and the profile
 of same was therefore considered unnecessary.
 The center line data shown is record per
 C.S. B-11-9 and C.S. B-653.*

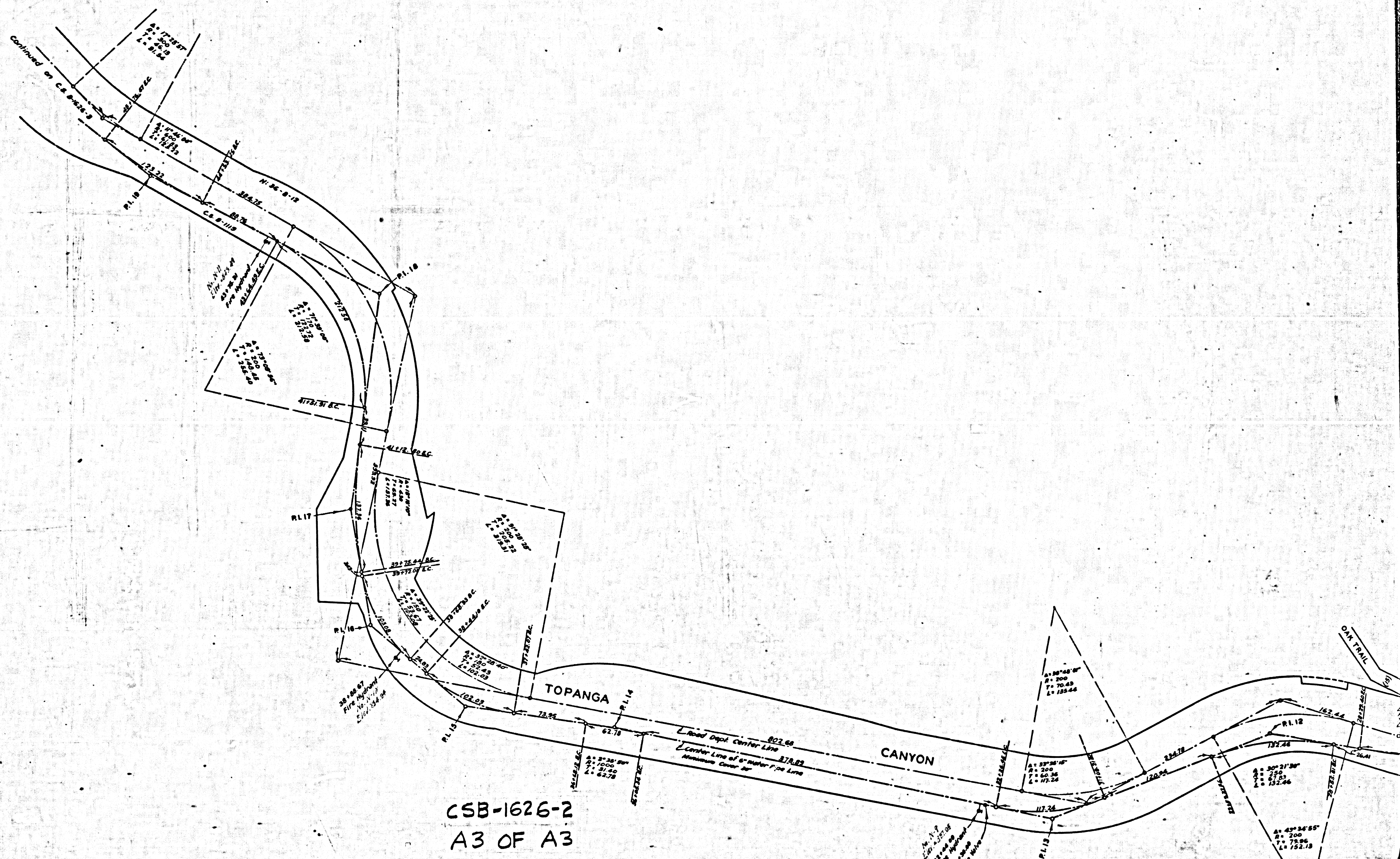
CSB-1626-2
 A1 OF A3



CSB-1626-2
A2 CF A3

8581-8 ON 94M PROXYRUS YTHUOS
2T11E2 2 70 S ON 73E12

CONULLA SUBELOS2 WAB INO B-1858
SHEET NOS 5 OF 3 SHEETS
8581-8



CSB-1626-2
A3 OF A3