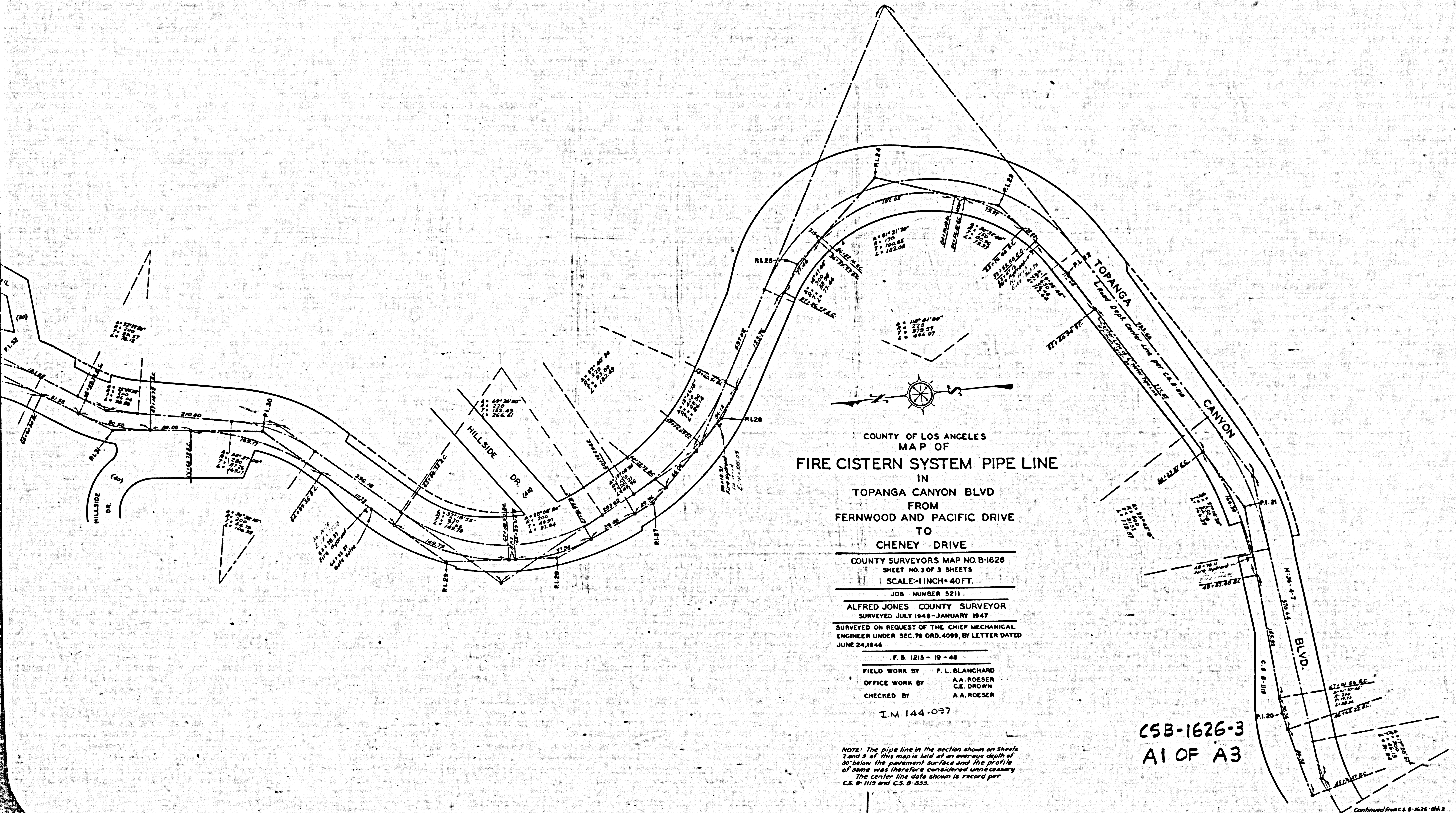


COUNTY SURVEYORS MAP NO. B-1626 SHEET NO. 3 OF 3 SHEETS

COUNTY SURVEYORS MAP NO. B-1626 SHEET NO. 3 OF 3 SHEETS



COUNTY OF LOS ANGELES  
 MAP OF  
**FIRE CISTERN SYSTEM PIPE LINE**  
 IN  
 TOPANGA CANYON BLVD  
 FROM  
 FERNWOOD AND PACIFIC DRIVE  
 TO  
 CHENEY DRIVE

COUNTY SURVEYORS MAP NO. B-1626  
 SHEET NO. 3 OF 3 SHEETS  
 SCALE: 1 INCH = 40 FT.  
 JOB NUMBER 5211  
 ALFRED JONES COUNTY SURVEYOR  
 SURVEYED JULY 1946 - JANUARY 1947  
 SURVEYED ON REQUEST OF THE CHIEF MECHANICAL  
 ENGINEER UNDER SEC. 79 ORD. 4099, BY LETTER DATED  
 JUNE 24, 1946

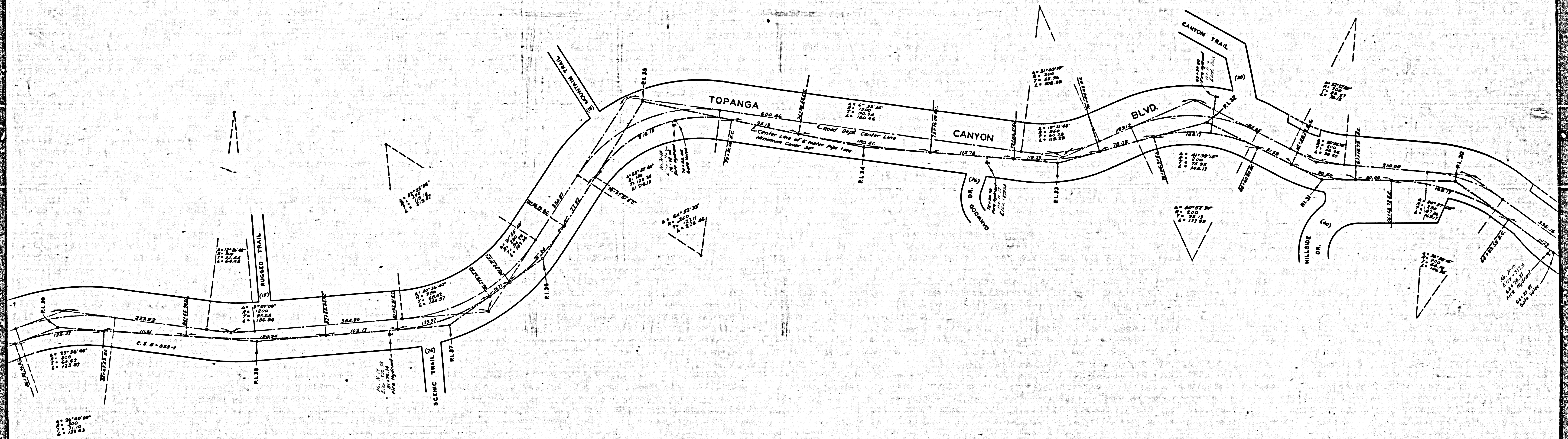
F. B. 1215 - 19 - 48  
 FIELD WORK BY F. L. BLANCHARD  
 OFFICE WORK BY A. A. ROESER  
 CHECKED BY C. E. DROWN  
 A. A. ROESER

I. M. 144-097

NOTE: The pipe line in the section shown on sheets 2 and 3 of this map is laid at an average depth of 30" below the pavement surface and the profile of same was therefore considered unnecessary. The center line data shown is record per C.S. B-1119 and C.S. B-553.

CSB-1626-3  
 A1 OF A3

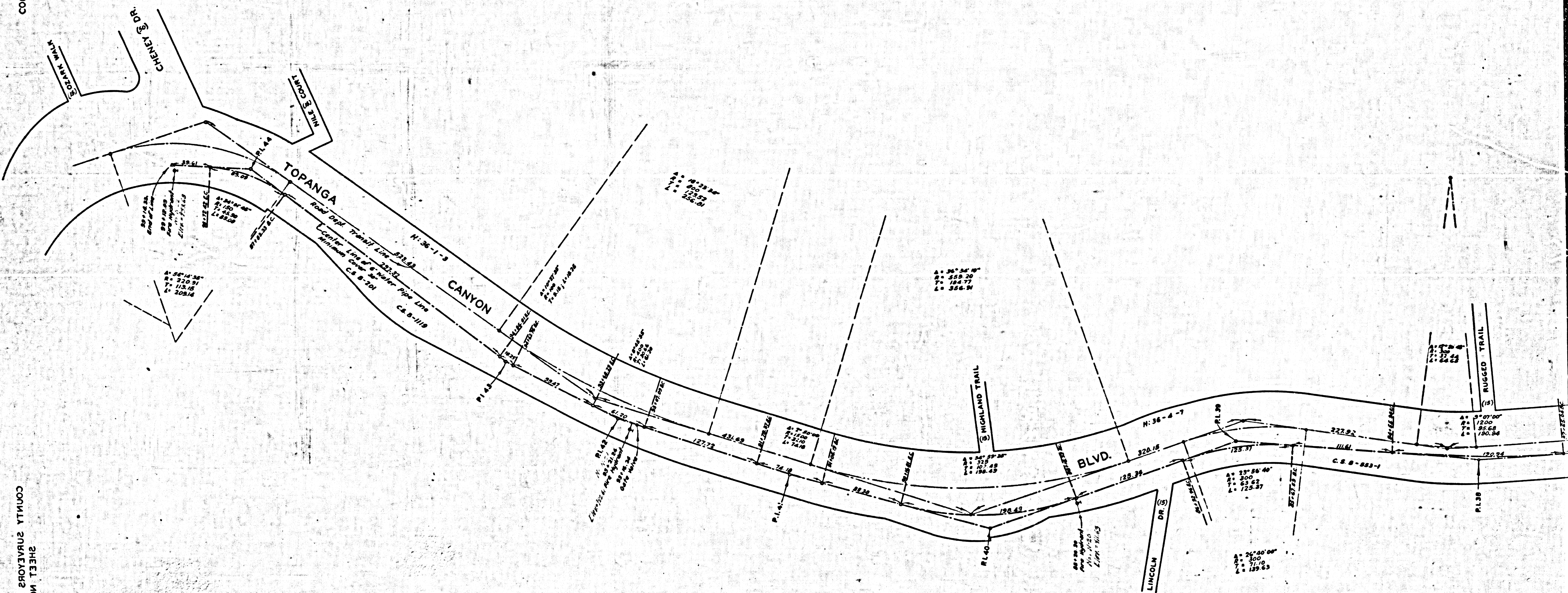
Continued from CS. B-1626-2A1



CSB-1626-3  
A2 OF A3

SHEET NO 3 OF 3 SHEETS  
COUNTY SURVEYORS MAP NO B-1658

SHEET NO 3 OF 3 SHEETS  
COUNTY SURVEYORS MAP NO B-1658



CSB-1626-3  
A3 OF A3