

MAP OF
STREETS IN TRACT No. 5664
MB. 14-9-21.

IN THE
FERNWOOD AREA
COUNTY SURVEYORS MAP No. B-1631
SHEET No. 2 OF 3 SHEETS
SCALE 1/4 INCH = 50 FT.

JOB NUMBER 8208

ALFRED JONES-COUNTY SURVEYOR
SURVEYED JANUARY 1938 - MARCH 1941.

SURVEYED UNDER INSTRUCTIONS OF THE
BOARD OF SUPERVISORS PER ORDERS DATED
NOVEMBER 8, 1937 AND JANUARY 2, 1940.
BEARINGS ARE BASED ON THE
MERIDIAN 11° 20' WEST OF GREENWICH

PLANE TABLE SHEETS E152, E153, E154, E155, E156 & E157
FB 895-209-248, FB 725-19-231 & FB 826-7-143.

FIELD WORK BY T. J. STEVENSON
T. H. WALSH
L. S. HAMMOND
S. E. BUTLER

OFFICE WORK BY F. A. WOOD
D. A. WHITE

INDEX 53
I.M. 129-097

NOTE: WHERE NOT STATED ON MAP, METHOD OF ESTABLISHMENT OF POINTS SHOWN IS AS FOLLOWS:
ALL RECORD DATA IS PER TRACT No. 5664, MB. 14-9-21.

- BASIN DRIVE.....Center line is established by record angles & distances from Fernwood Pacific Drive to intersection with north line of tract.
- FERNWOOD PACIFIC DRIVE.....Center line is proportional between adjoining R.L.s.
- HORSESHOE DRIVE.....Center line is established by record angles & distances southeasterly from stake found on north line Lot, Block 24, to intersection with Fernwood Pacific Drive & southeasterly from said stake by record angles & distances to intersection with south tract line.
- MOUNTAIN VIEW TRAIL.....Center line is established by record angles & distances from Horseshoe Drive to intersection with west tract line.
- SUNSET TRAIL.....Center line is proportional between record points on Horseshoe Drive & Fernwood Pacific Drive.
- BOWERS DRIVE.....Center line is fixed by averaging offsets to stakes found. First R.L. to east of intersection with Webb Trail is record distance therefrom; thence by proportion to intersection with Oak Trail.
- OAK TRAIL.....Center line is established by proportion between Webb Trail & Grandview Drive.
- WEBB TRAIL.....Center line is established by record angles & distances southeasterly from 2" iron pipe found on southeasterly line of Lot 10, Block 1 to intersection with Bowers Drive.
- GRANDVIEW DRIVE.....Center line is established by proportion from 2" iron pipe found on southeasterly line Lot 10, Block 1 southeasterly to 2" iron pipe found on northeasterly line Lot 15, Block 11. From intersection with Webb Trail, center line to the northeast is established by record angles & distances to intersection with Spang's Canyon Drive.
- OBSERVATION DRIVE.....Center line is established by proportion between R.L.s at Lots 9 & 12, Block 11.

CSB-1631-2
A1 OF A2

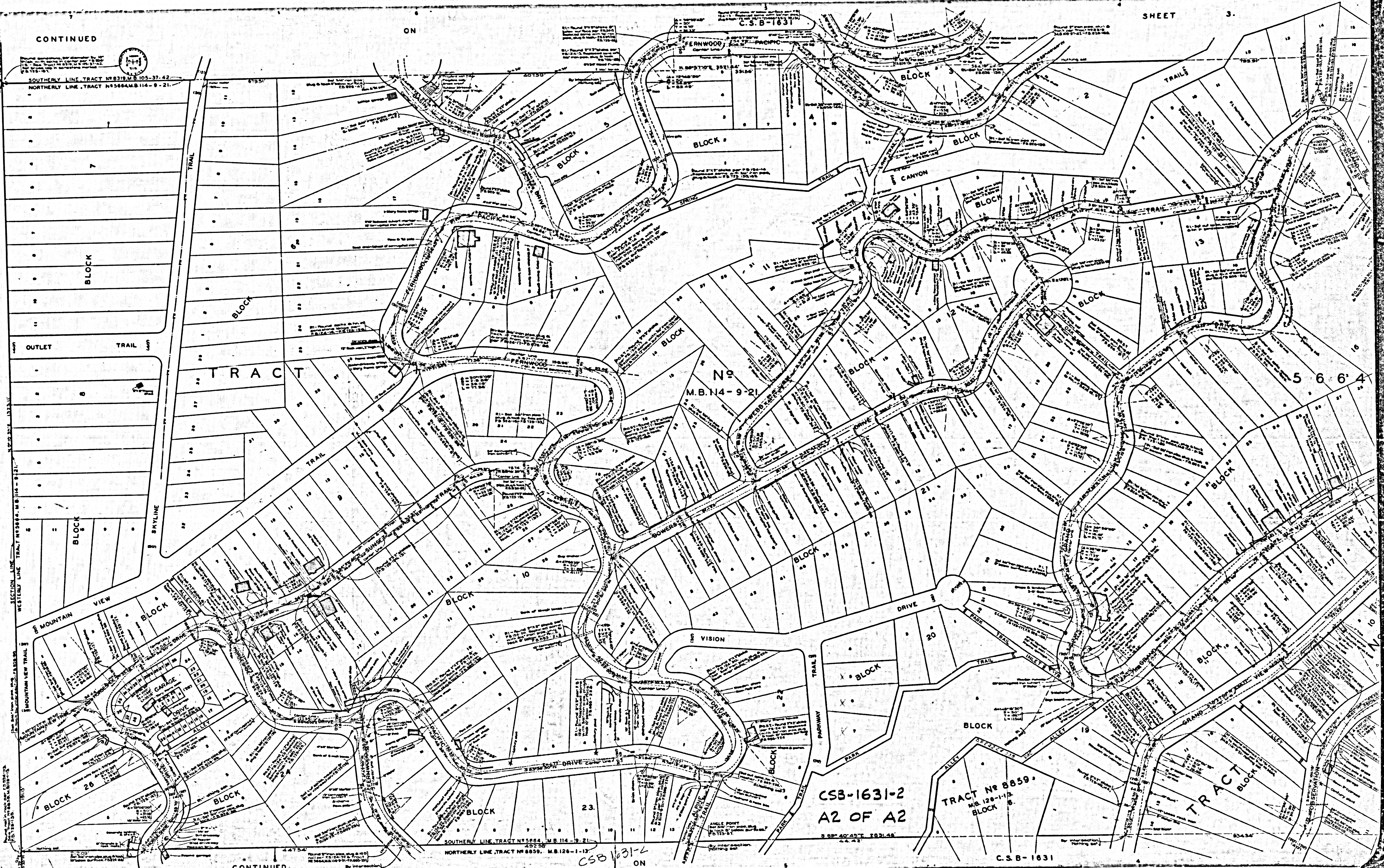
SHEET No. 2 OF 3 SHEETS
COUNTY SURVEYORS MAP No. B-1631

SHEET No. 2 OF 3 SHEETS
COUNTY SURVEYORS MAP No. B-1631

CONTINUED

ON

SHEET 3.



SOUTHERLY LINE TRACT N° 8319 M.B. 105-37-42
 NORTHERLY LINE TRACT N° 5664 M.B. 114-9-21

N°
 M.B. 114-9-21

CSB-1631-2
 A2 OF A2

TRACT N° 8859
 M.B. 126-1-12
 BLOCK 6

TRACT

MOUNTAIN VIEW

VISION

BLOCK 26

BLOCK

BLOCK

23

SOUTHERLY LINE TRACT N° 5664 M.B. 114-9-21
 NORTHERLY LINE TRACT N° 8859 M.B. 126-1-12

CSB 1631-2
 ON

C.S.B-1631

CONTINUED