

CSB-1633-3
A2 OF A4

ATCHISON
PORTAL AVE.

INGLEWOOD-REDONDO
TOPEKA AND SANT

KENNEBEC

ISIS AVE.

HINDRY AVE.

INGLEWOOD-REDONDO

GLASGOW AVE.

HINDRY AVE.

GLASGOW AVE.

HINDRY AVE.

GLASGOW AVE.

HINDRY AVE.

ISIS AVE.

HINDRY AVE.

GLASGOW AVE.

HINDRY AVE.

GLASGOW AVE.

HINDRY AVE.

GLASGOW AVE.

HINDRY AVE.

GLASGOW AVE.

HINDRY AVE.

ISIS AVE.

HINDRY AVE.

GLASGOW AVE.

HINDRY AVE.

GLASGOW AVE.

HINDRY AVE.

GLASGOW AVE.

HINDRY AVE.

GLASGOW AVE.

HINDRY AVE.

ISIS AVE.

HINDRY AVE.

GLASGOW AVE.

HINDRY AVE.

GLASGOW AVE.

HINDRY AVE.

GLASGOW AVE.

HINDRY AVE.

GLASGOW AVE.

HINDRY AVE.

ISIS AVE.

HINDRY AVE.

GLASGOW AVE.

HINDRY AVE.

GLASGOW AVE.

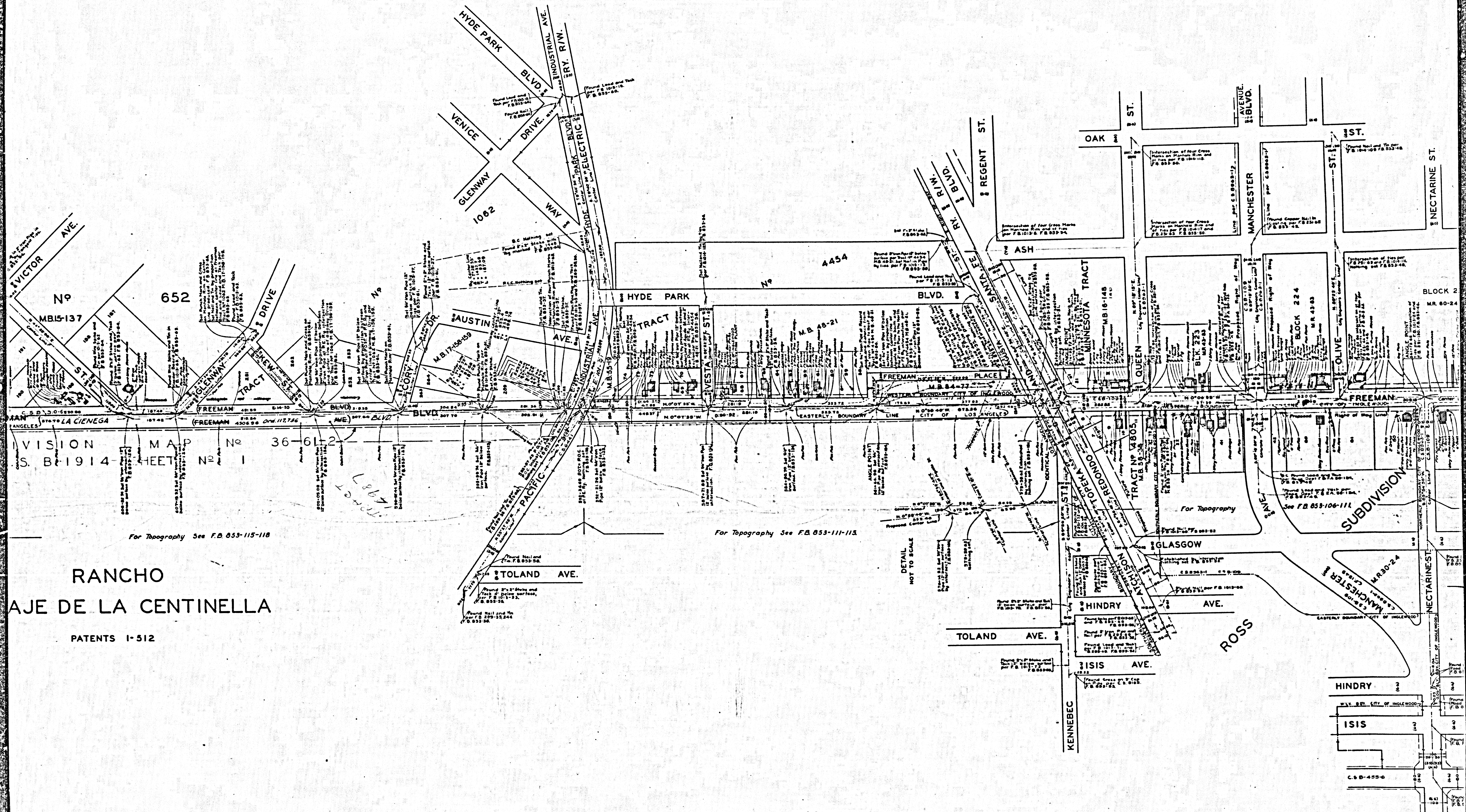
HINDRY AVE.

GLASGOW AVE.

HINDRY AVE.

GLASGOW AVE.

HINDRY AVE.



VISION MAP No 36-61-2
S. B. 1914 SHEET No 1

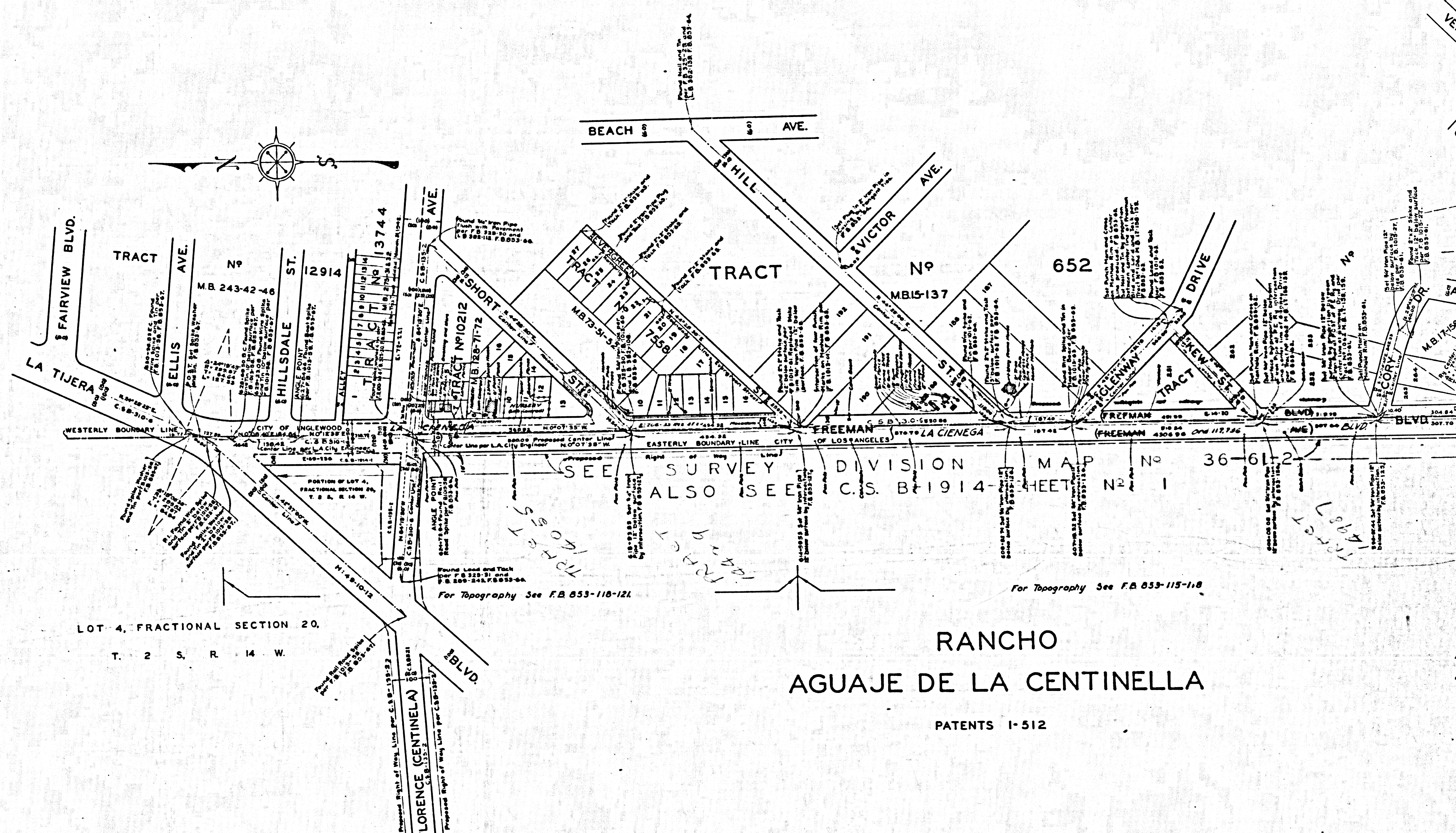
For Topography See F.B. 853-115-118

For Topography See F.B. 853-111-113

RANCHO
DE LA CENTINELLA
PATENTS 1-512

CSB-1633-3
A3 OF A4

CONSULT SHEET NO. 301. MAP NO. 1633-3



LOT 4, FRACTIONAL SECTION 20.
T. 2 S. R. 14 W.

RANCHO
AGUAJE DE LA CENTINELLA

PATENTS 1-512

CSB-1633-3
A4 OF A4

CONSULT SHEET NO. 301. MAP NO. 1633-3