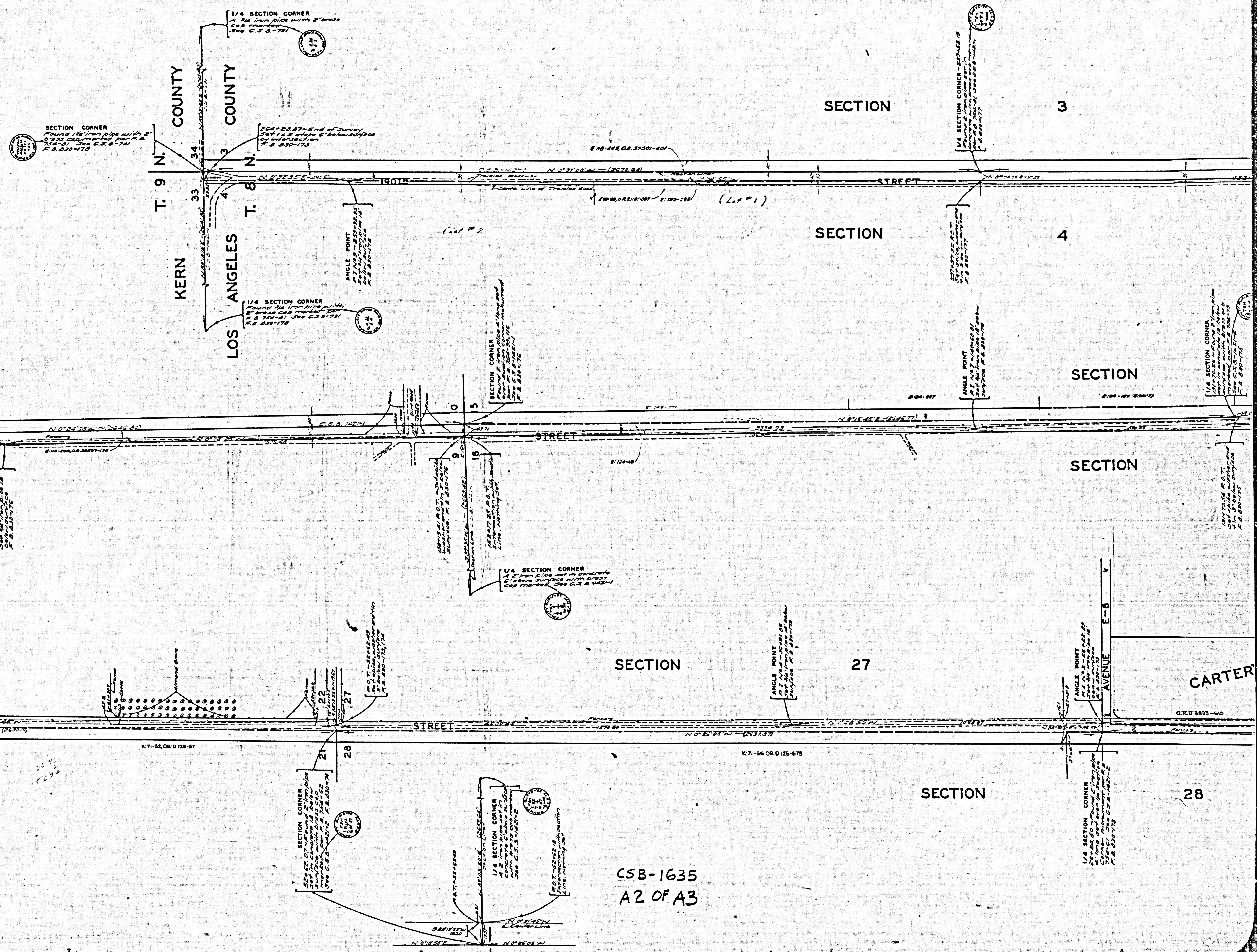


MAP OF
190TH STREET WEST
 FROM
LANCASTER ROAD
 (STATE HIGHWAY VII-L.A.59)
 TO
KERN COUNTY BOUNDARY
 COUNTY SURVEYORS' MAP NO B-1635
 SCALE: 1 INCH = 100 FT.

JOB NUMBER 8503
 ALFRED JONES—COUNTY SURVEYOR
 SURVEYED DEC. 1940
 SURVEYED UPON VERBAL REQUEST OF COUNTY
 ROAD COMMISSIONER UNDER RULE 21, ORD. 929
 FOR THE PURPOSE OF ESTABLISHING A CENTER
 LINE ON THE PRESENT TRAVELED ROAD
 BEARINGS ARE BASED ON THE BEARING OF
 LANCASTER ROAD PER C.S.B.-1422-2
 F. B. 830-17110185
 FIELD WORK BY E. A. ROSECRANS
 OFFICE WORK BY K. R. M. PHERSON
 CHECKED BY C. W. COX

CSB-1635
 A1 OF A3

INDEX 72-73



SECTION CORNER
Found 1 1/2" iron pipe with 2" cap marked with 190-175
See C.S. & 174
P. & 830-175

1/4 SECTION CORNER
1 1/2" iron pipe with 2" cap
See C.S. & 174
P. & 830-175

SCA+28.87-End of Survey
Set 1 1/2" pipe 6" below surface
at intersection
T. & 830-175

1/4 SECTION CORNER
Found 1 1/2" iron pipe with 2" cap marked with 190-175
See C.S. & 174
P. & 830-175

ANGLE POINT
Set 1 1/2" iron pipe with 2" cap
at intersection
T. & 830-175

SECTION CORNER
Found 1 1/2" iron pipe with 2" cap marked with 190-175
See C.S. & 174
P. & 830-175

1/4 SECTION CORNER
1 1/2" iron pipe set in concrete
at intersection with 190th
See C.S. & 174
P. & 830-175

SECTION CORNER
Set 1 1/2" iron pipe with 2" cap
at intersection with 190th
See C.S. & 174
P. & 830-175

1/4 SECTION CORNER
1 1/2" iron pipe set in concrete
at intersection with 190th
See C.S. & 174
P. & 830-175

1/4 SECTION CORNER - 27-175
Found 1 1/2" iron pipe with 2" cap
at intersection with 190th
See C.S. & 174
P. & 830-175

ANGLE POINT
Set 1 1/2" iron pipe with 2" cap
at intersection
T. & 830-175

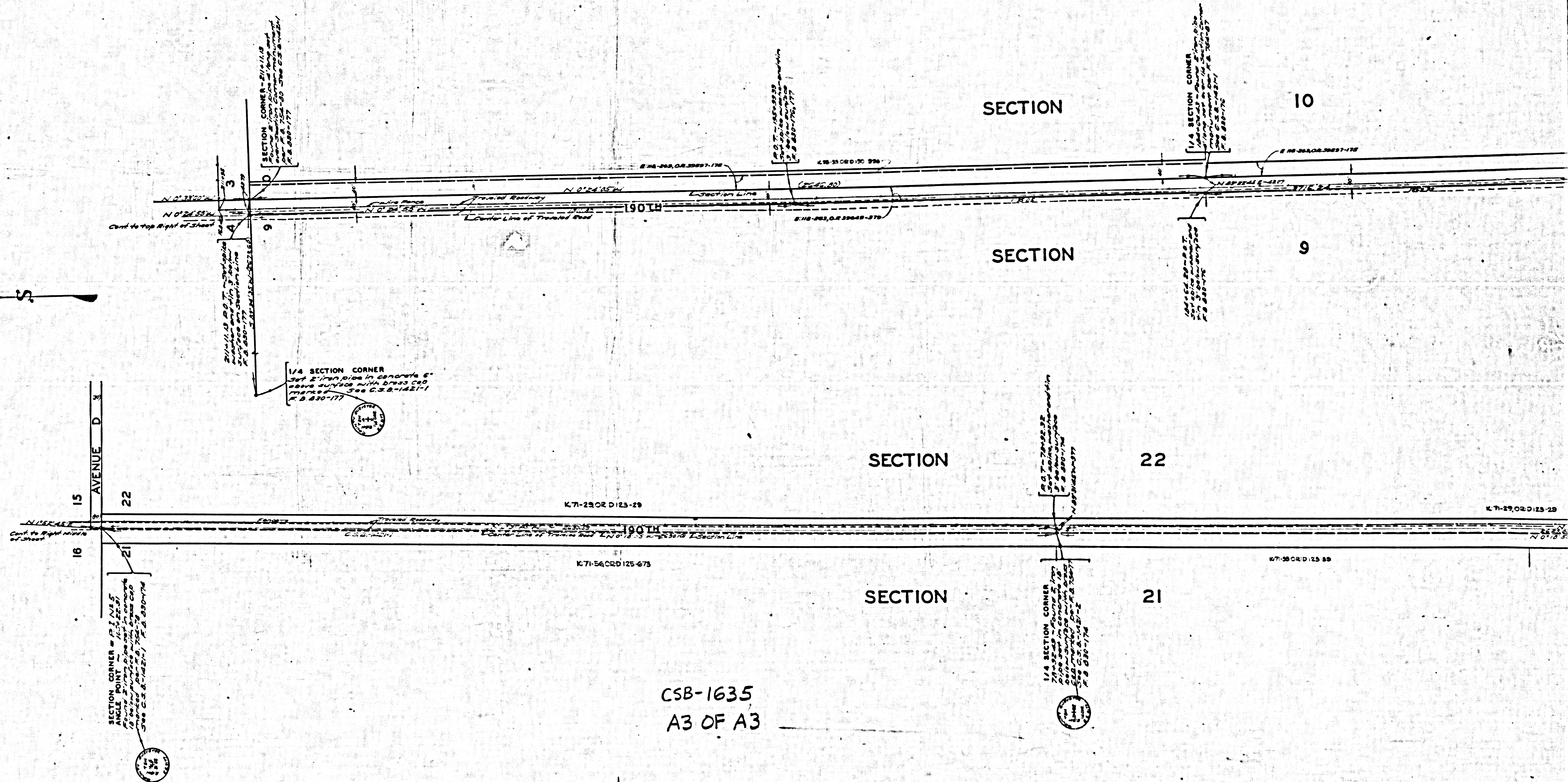
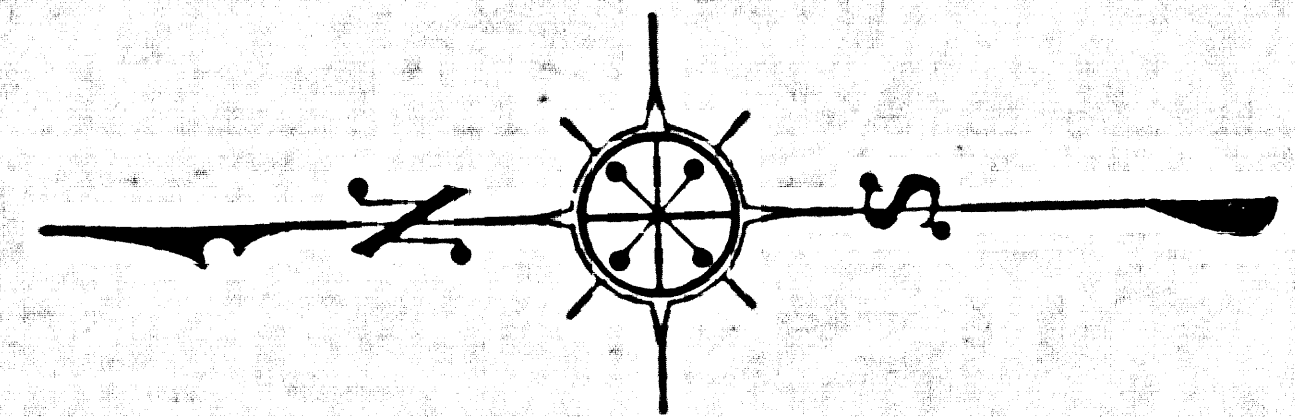
1/4 SECTION CORNER
Found 1 1/2" iron pipe with 2" cap
at intersection with 190th
See C.S. & 174
P. & 830-175

ANGLE POINT
Set 1 1/2" iron pipe with 2" cap
at intersection
T. & 830-175

ANGLE POINT
Set 1 1/2" iron pipe with 2" cap
at intersection
T. & 830-175

1/4 SECTION CORNER
Found 1 1/2" iron pipe with 2" cap
at intersection with 190th
See C.S. & 174
P. & 830-175

CSB-1635
A2 OF A3



CSB-1635
A3 OF A3