

E C T I O N 13,
T. 8 N., R. 16 W.

PROPERTY OF MOLLIE SILVEY.

M. R. 72-67,68.

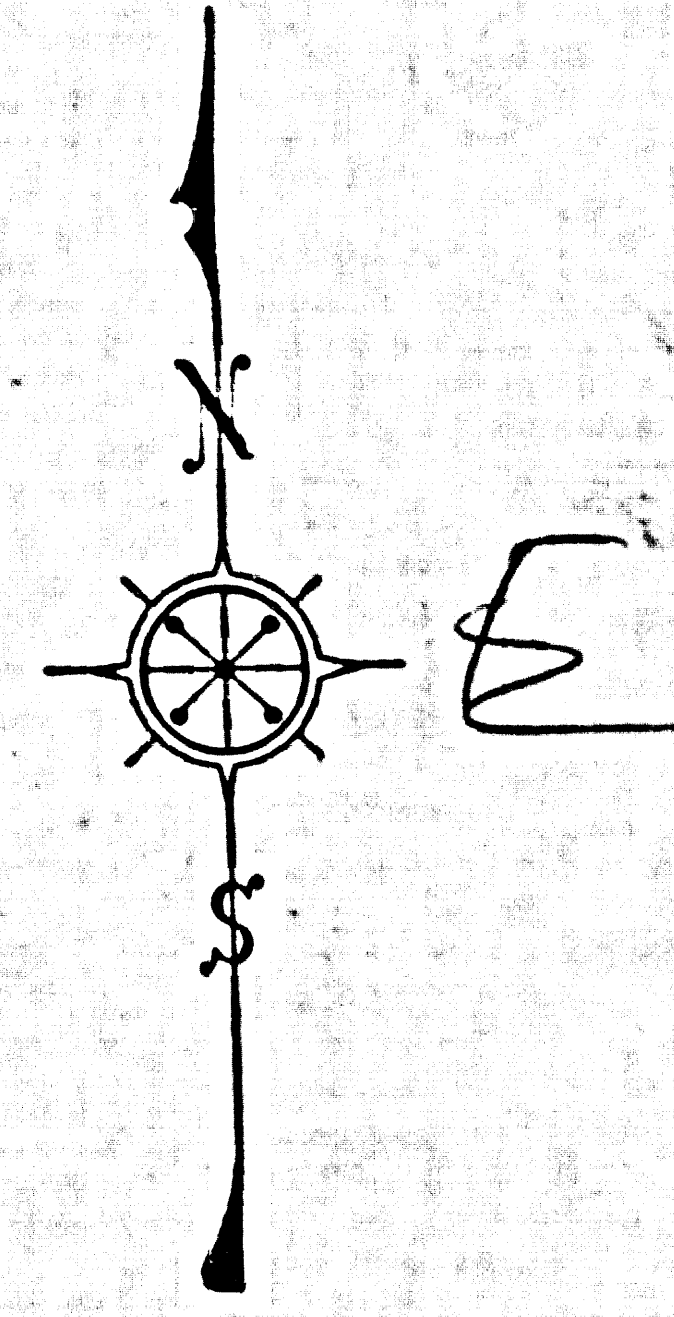
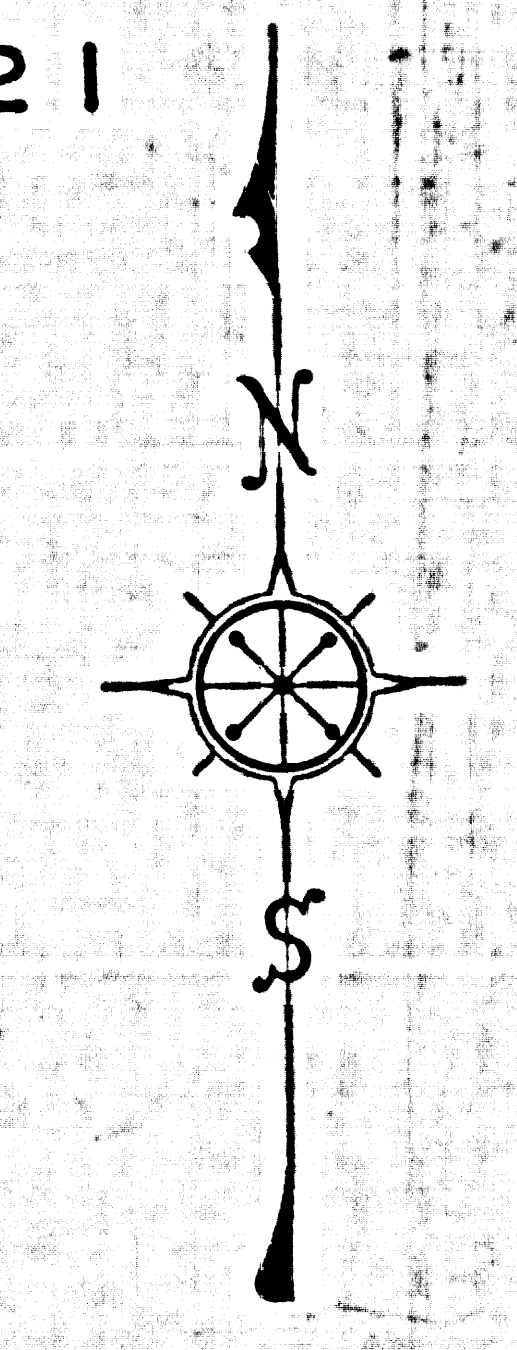
S E C T I O N 16

T. 8 N., R. 15 W.

S E C T I O N 21

S E C T I O N 14

S E C T I O N 23



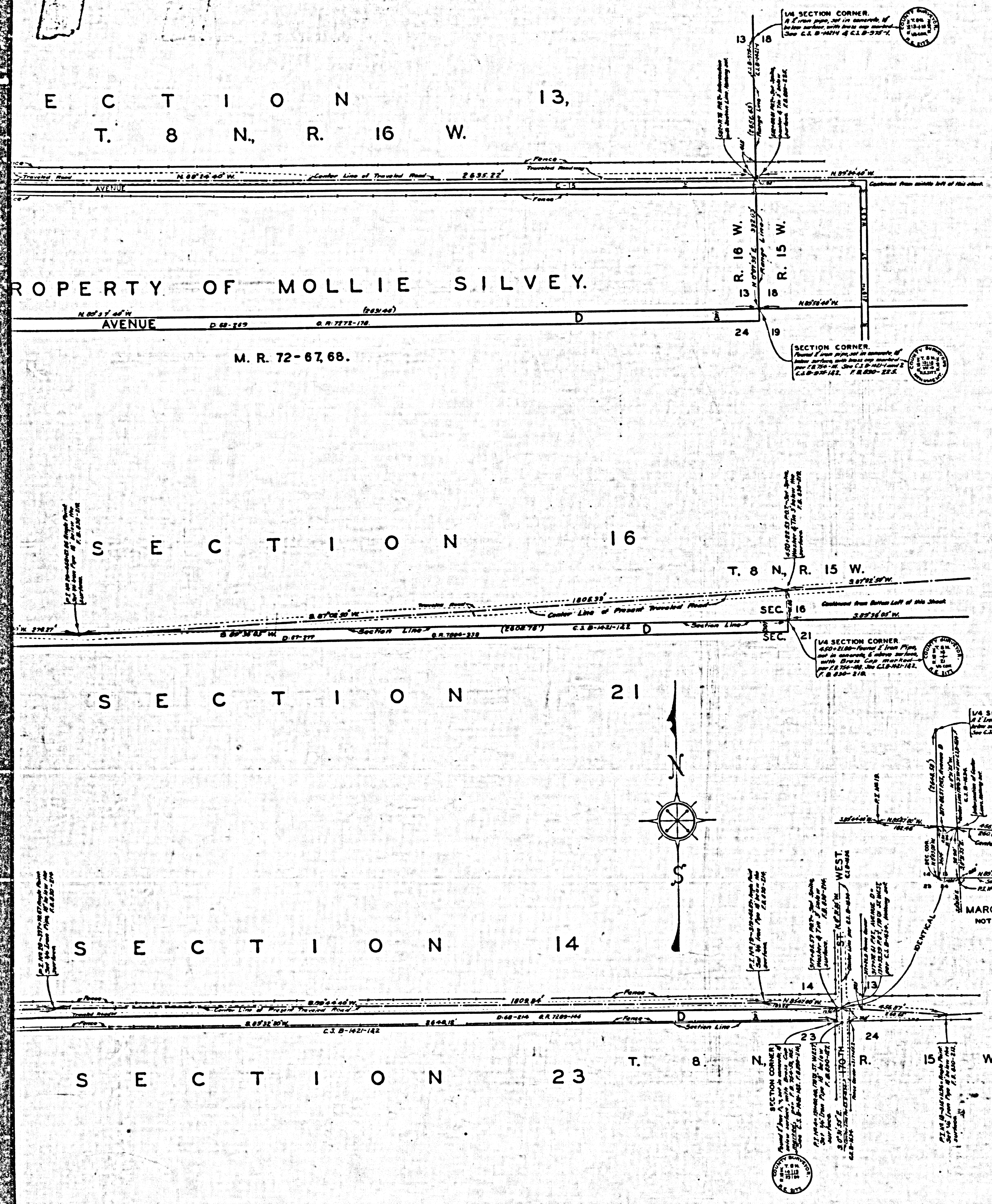
MAP OF
AVENUE D (NEENACH ROAD)
 FROM
110TH STREET WEST
 TO
244TH STREET WEST (LANCASTER ROAD)
 COUNTY SURVEYORS MAP NO B-1636.
 SHEET NO 2 OF 2 SHEETS.
 SCALE - 1 INCH = 100 FEET.

JOB NUMBER 8301.
 ALFRED JONES, COUNTY SURVEYOR.
 SURVEYED, DEC, 1940, - JAN, 1941.

SURVEYED AT VERBAL REQUEST OF COUNTY ROAD COMMISSIONER UNDER RULE 21, ORD. 929, FOR THE PURPOSE OF ESTABLISHING A CENTER LINE ON THE PRESENT TRAVELED ROAD. BEARINGS ARE BASED ON THE BEARING OF SOUTH LINE OF SECTION 13, T. 8 N., R. 15 W., S.B.M. AS SHOWN ON C.S. B-1421, SHEET NO 1.

F. B. 830 - 201 TO 250.
 FIELD WORK BY ... E. A. ROSECRANS.
 OFFICE WORK BY ... K. R. MAPHERSON.
 CHECKED BY ... K. R. MAPHERSON.
 INDEX NO 72-73

CSB-1636-2
 A1 OF A4



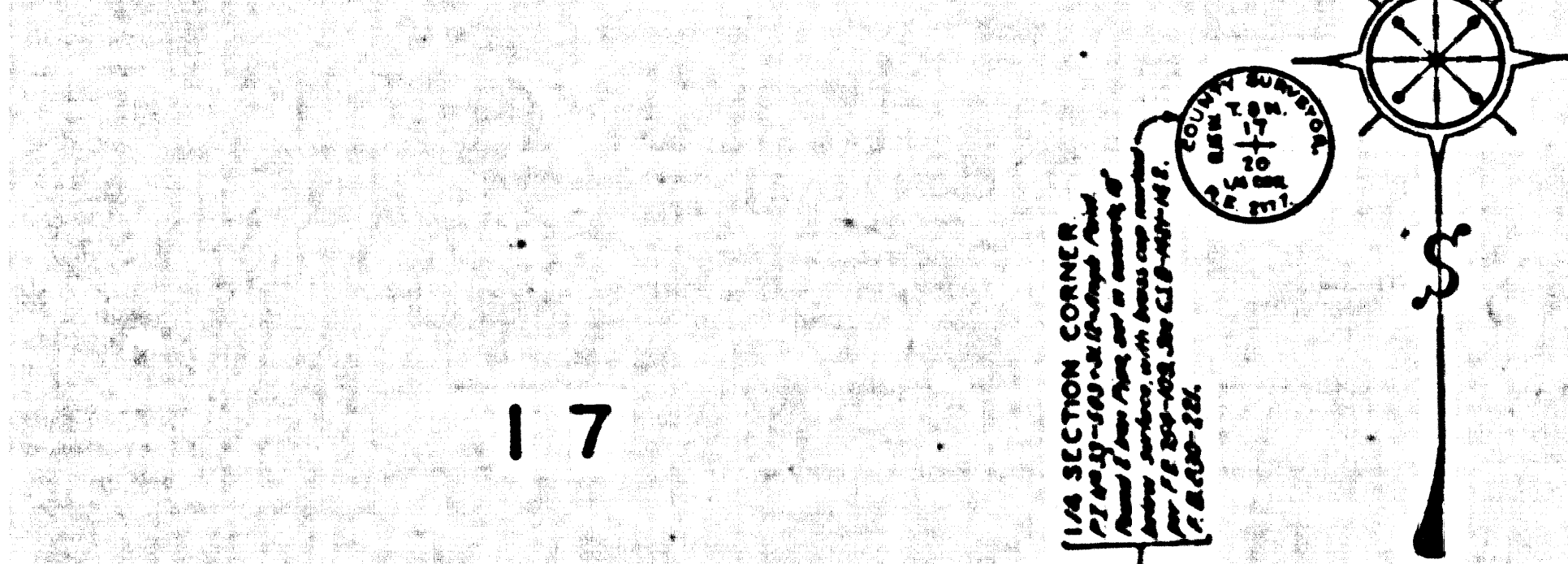
SECTION 13
T. 8 N., R. 16 W.

SECTION 14
T. 8 N., R. 16 W.

SECTION 14
T. 8 N., R. 16 W.
SUBDIVISION.

MANZANA COLONY.
M. R. 53-28; M. R. 53-44
L. S. 1-58.

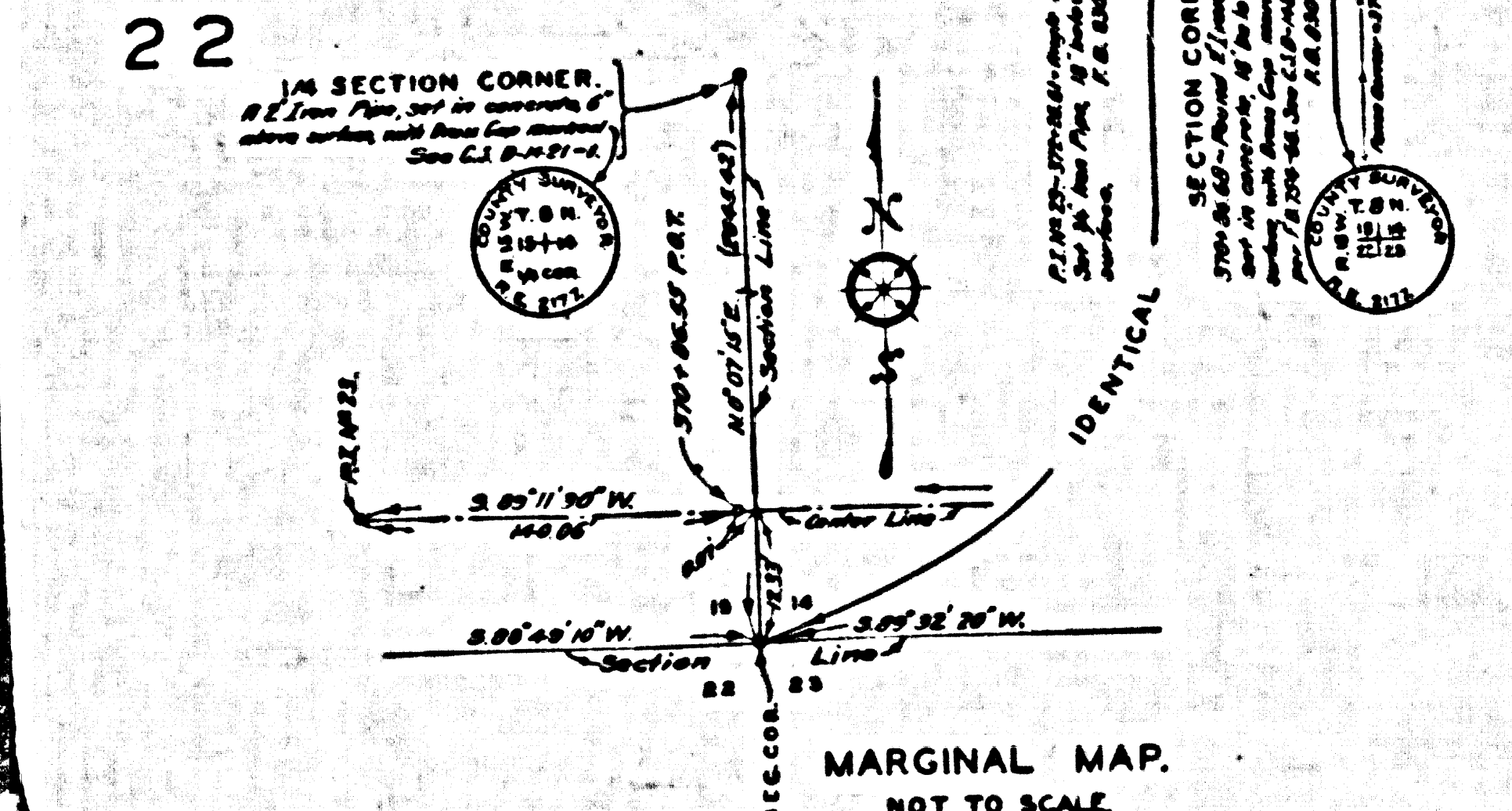
PROPERTY OF MOLLIE S
M. R. 72-67, 68.



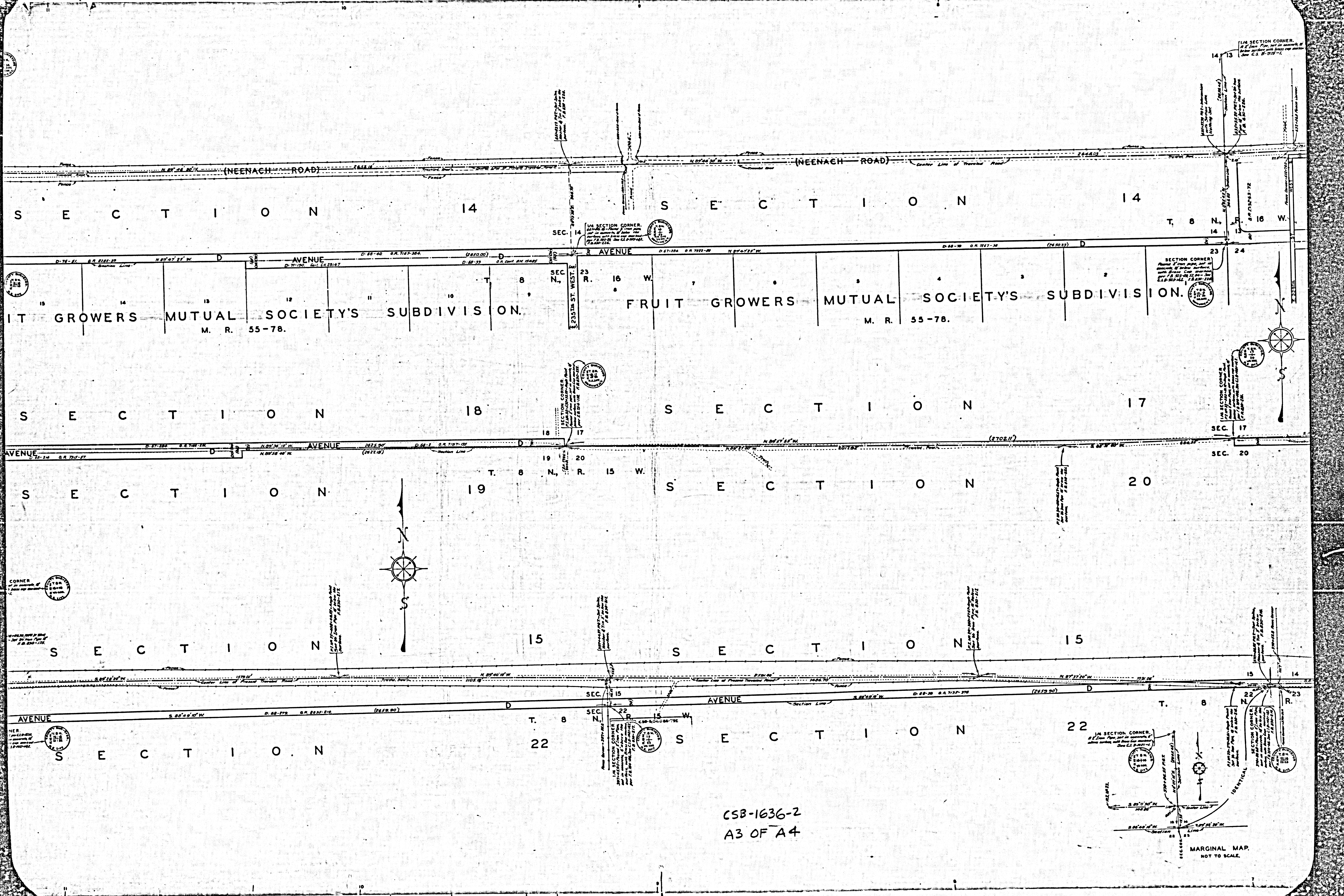
SECTION 17
SECTION 17
SECTION 20
SECTION 20
SECTION 20
SECTION 20

SECTION 15
SECTION 14
SECTION 14
SECTION 15
SECTION 15
SECTION 15

SECTION 22
SECTION 23
SECTION 23
SECTION 23
SECTION 23
SECTION 23



CSB-1636-2
AZ OF A4



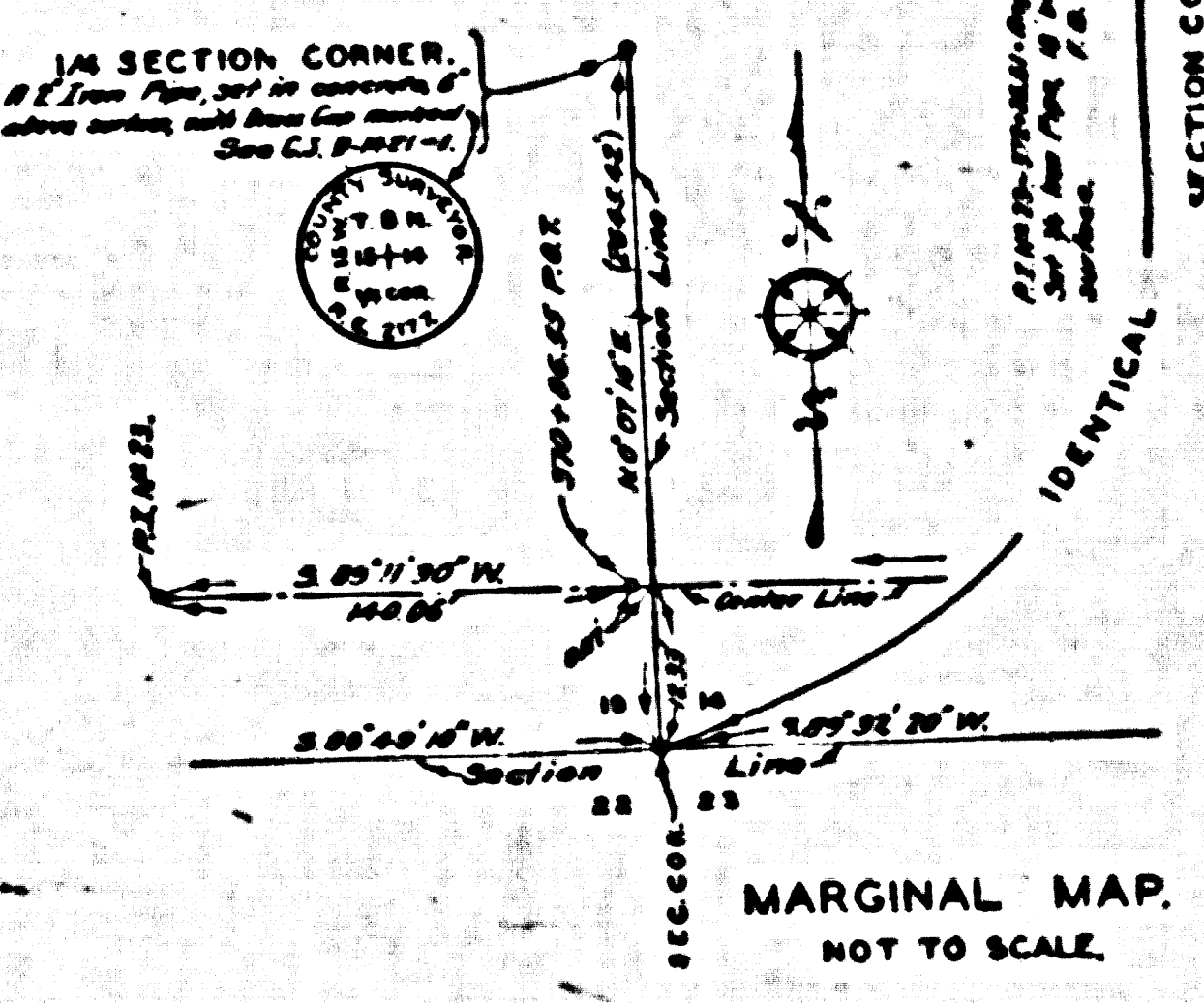
SECTION CORNER
1/4 SECTION CORNER
1/4 SECTION CORNER
1/4 SECTION CORNER

SECTION CORNER
1/4 SECTION CORNER
1/4 SECTION CORNER
1/4 SECTION CORNER

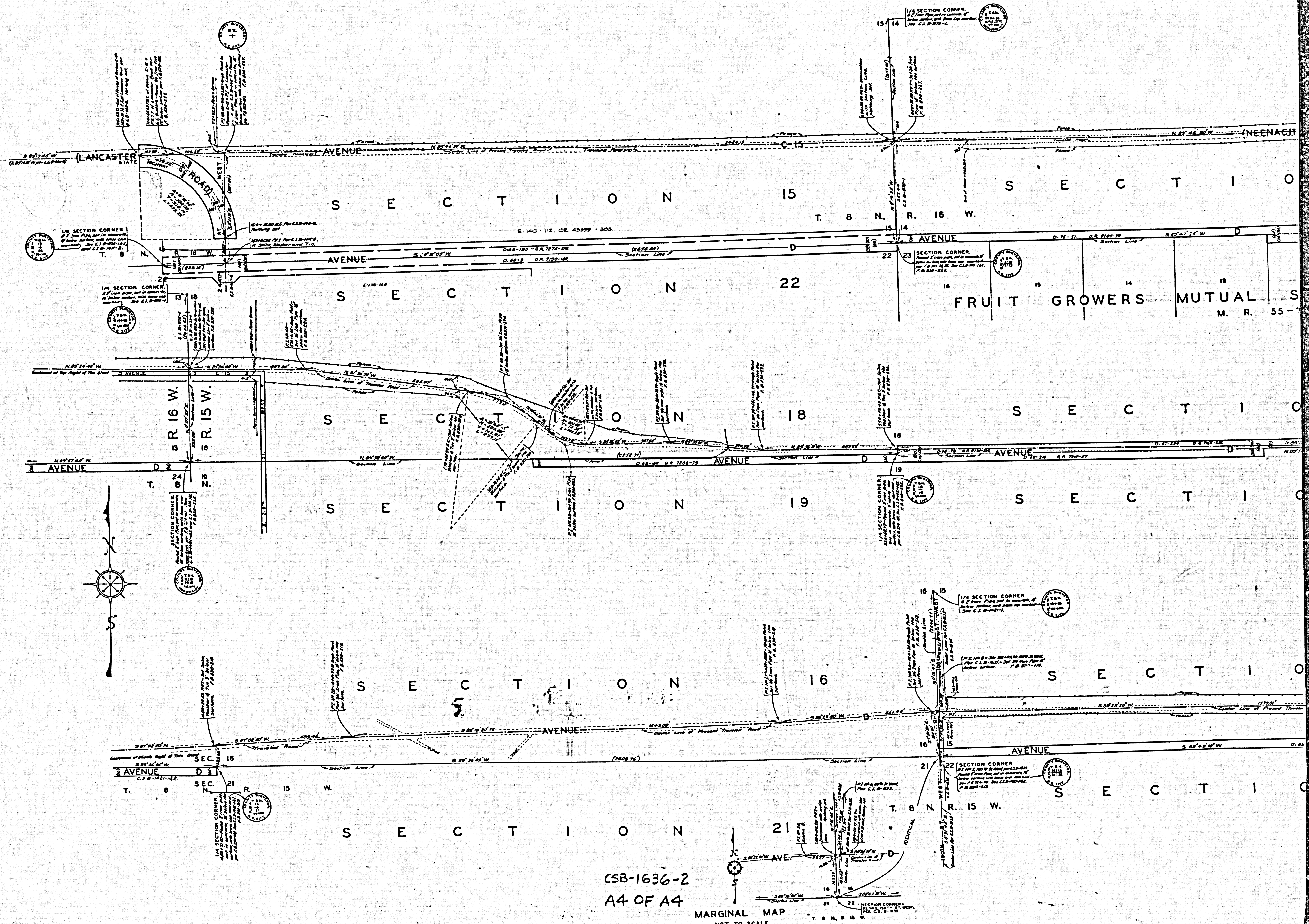
SECTION CORNER
1/4 SECTION CORNER
1/4 SECTION CORNER
1/4 SECTION CORNER

SECTION CORNER
1/4 SECTION CORNER
1/4 SECTION CORNER
1/4 SECTION CORNER

CSB-1636-2
A3 OF A4



MARGINAL MAP.
NOT TO SCALE.



CSB-1636-2
 A4 OF A4

MARGINAL MAP
 NOT TO SCALE.