

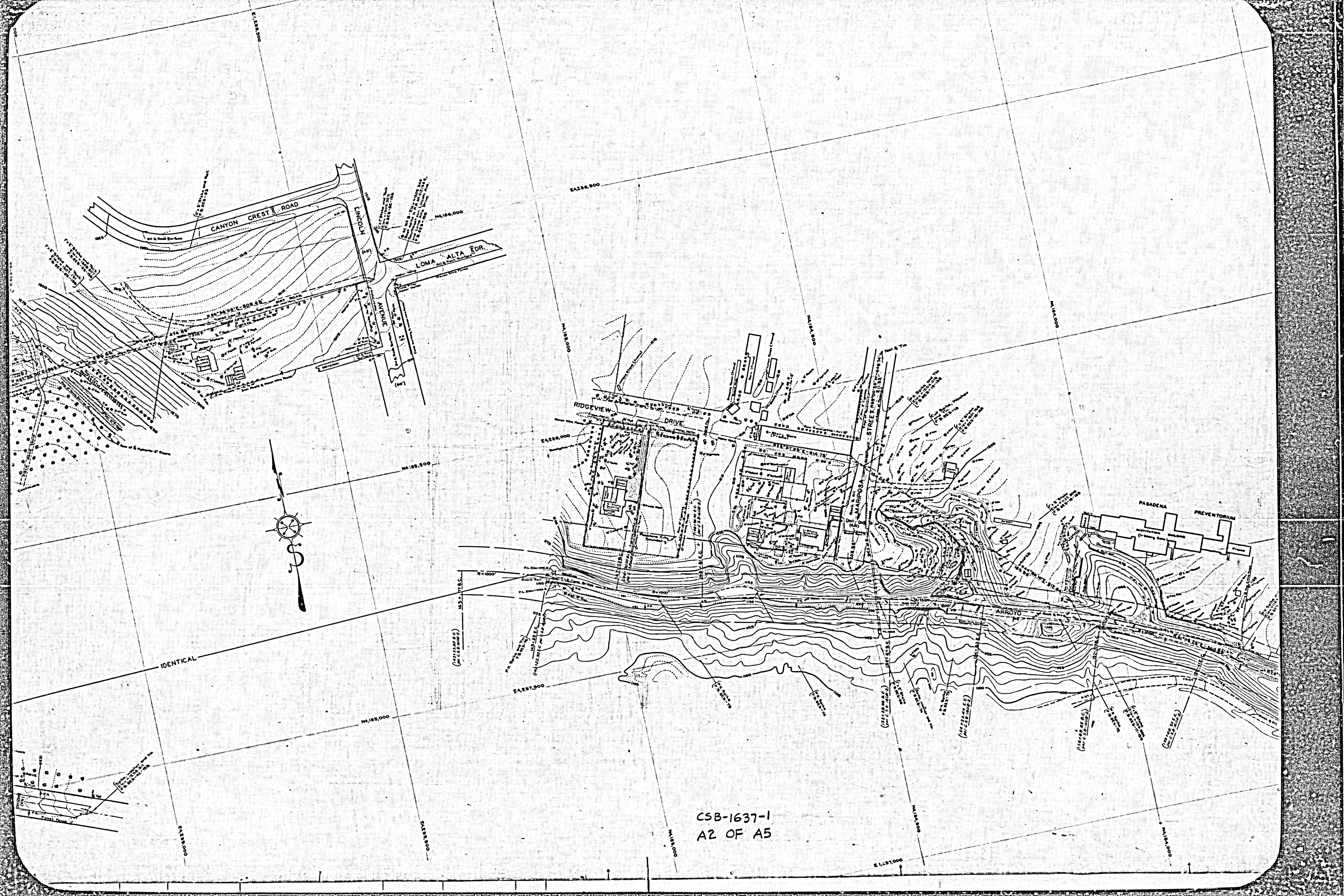
TOPOGRAPHIC MAP
OF
WINDSOR AVENUE
FROM
NORTHERLY BOUNDARY OF CITY OF PASADENA
TO
ANGELES CREST HIGHWAY
(STATE HIGHWAY NO. L. A. 61-A)
COUNTY SURVEYORS MAP NO. B-1637
SHEET 1 OF 2 SHEETS
SCALE-1 INCH = 50 FT.

JOB NUMBER 6284
ALFRED JONES-COUNTY SURVEYOR
SURVEYED AUGUST-DECEMBER, 1940
SURVEYED UNDER INSTRUCTIONS OF THE
BOARD OF SUPERVISORS PER ORDER DATED
JUNE 1, 1939
AND
AT THE REQUEST OF THE REGIONAL PLANNING
COMMISSION PER RULE 21 ORDINANCE 929 BY LETTER
DATED DECEMBER 1, 1939
PLANE TABLE SHEETS G-211 TO G-216 INCLUSIVE
F. B. 623-15-138; 154-183
FIELD WORK BY... F. C. GREENWOOD
OFFICE WORK BY... J. A. LYON
CHECKED BY... L. K. FREEMAN
J. H. SMITH

DATUM - MEAN SEA LEVEL
ELEVATIONS SHOWN HEREON ARE BASED ON THE
1928 U. S. C. & G. S. ADJUSTMENT OF U. S. C. & G. S. S.
M. S. 5 88 - 1923" (U. S. 9173), 5 97 - 1923" (U. S. 9446),
AND U. S. C. & G. S. M. "B" - 1929" (U. S. 1717).
COORDINATES ARE BASED ON THE LOS ANGELES
COUNTY COORDINATE SYSTEM, LAMBERT GRID,
CENTRAL MERIDIAN 118° 20' WEST,
SEE C. S. 9423

FOR ALIGNMENT SEE C. S. B-1608
CENTER LINE STATIONING SHOWN IS
PRELIMINARY SCALED STATIONING
FOR FINAL CHANGED STATIONING
SEE C. S. B-1608 SHEET 1

CSB-1637-1
A1 OF A5

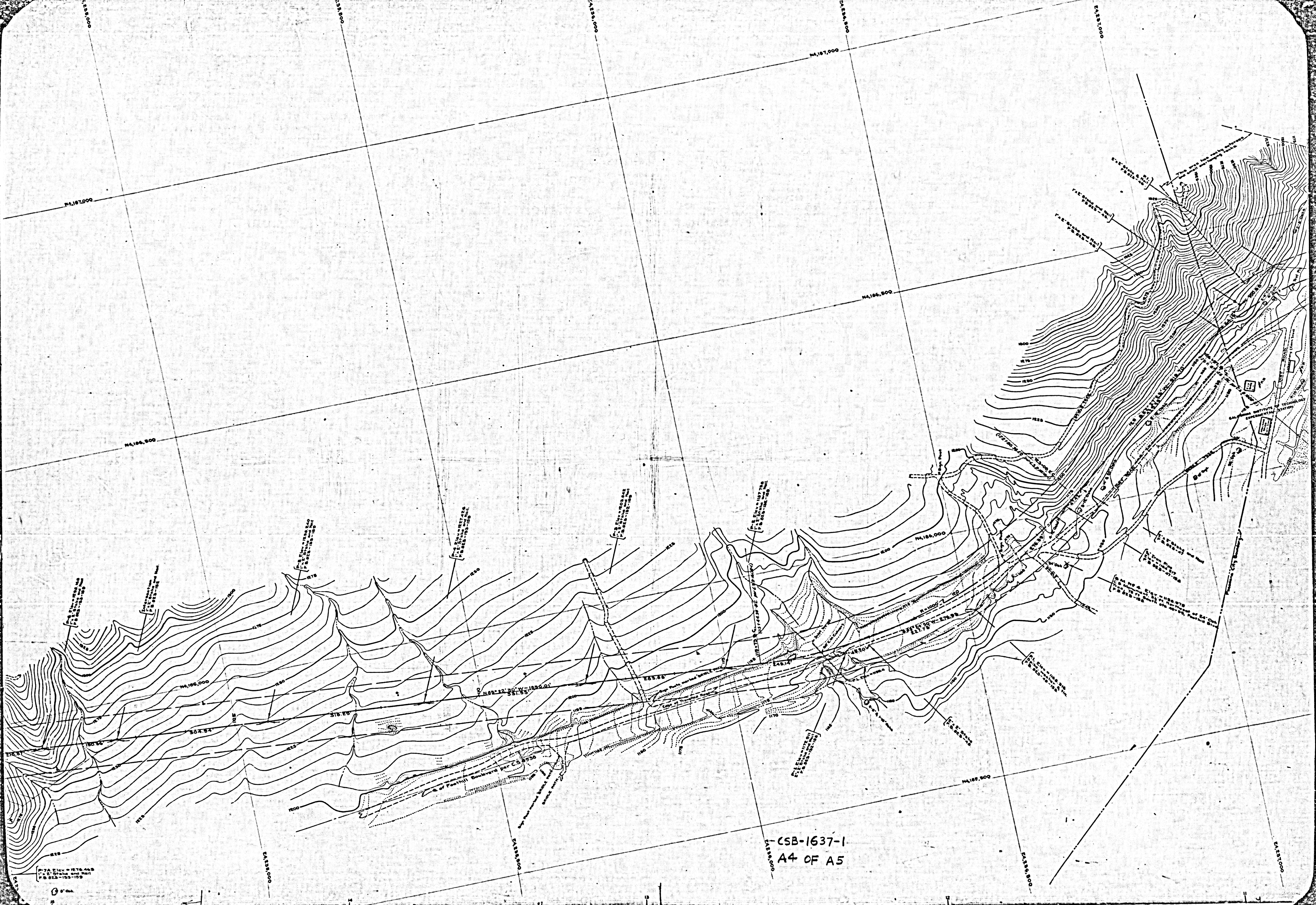


CSB-1637-1
A2 OF A5



CSB-1637-1
A3 OF A5

IDENTICAL



CSB-1637-1
A4 OF A5

1:7.5 Elev = 1576.408
1:7.5 Station and Well
P & S 523-103-109

0' 0"

COMPLX 21E7EAOBZ7V1V5

COMPLX 21E7EAOBZ7V1V5
SHEET 1 OF 5 SHEETS
RAM 2P0YEVURU YTHU00

NA 187,500

NA 187,000

NA 186,500

NA 186,000

NA 188,000

NA 188,500

NA 187,000

NA 186,500

NA 186,000

CONTINUED ON SHEET NO 2

P-18 A Elev = 1875.149
1" x 2" State and Natl
P.B. 823-155-155

P-17 Elev = 1865.849
1" x 2" State and Natl
P.B. 823-155-155

P-16 Elev = 1870.115
1" x 2" State and Natl
P.B. 823-155-155

S.M. NE E Elev = 1876.084
C.S. monument, 8" North of Clump of
S-10' Oaks, Southeast Corner of
of P-18.

P-15 Elev = 1870.115
1" x 2" State and Natl
P.B. 823-155-155

P-14 Elev = 1865.849
1" x 2" State and Natl
P.B. 823-155-155

P-13 Elev = 1865.849
1" x 2" State and Natl
P.B. 823-155-155

P-12 Elev = 1865.849
1" x 2" State and Natl
P.B. 823-155-155

P-11 Elev = 1865.849
1" x 2" State and Natl
P.B. 823-155-155

P-8 A Elev = 1870.115
1" x 2" State and Natl
P.B. 823-155-155

P-7 A Elev = 1870.115
1" x 2" State and Natl
P.B. 823-155-155

P-6 A Elev = 1870.115
1" x 2" State and Natl
P.B. 823-155-155

P-5 A Elev = 1870.115
1" x 2" State and Natl
P.B. 823-155-155

P-4 A Elev = 1870.115
1" x 2" State and Natl
P.B. 823-155-155

P-3 A Elev = 1870.115
1" x 2" State and Natl
P.B. 823-155-155

P-7 A Elev = 1870.115
1" x 2" State and Natl
P.B. 823-155-155

CENTER LINE STATIONING SHOWN IS
PRELIMINARY SCALED STATIONING
FOR FINAL CHANGED STATIONING
SEE U. S. G. P. 1908 SHEET 1.

CSB-1637-T
A5 OF A5

1" = 100'

