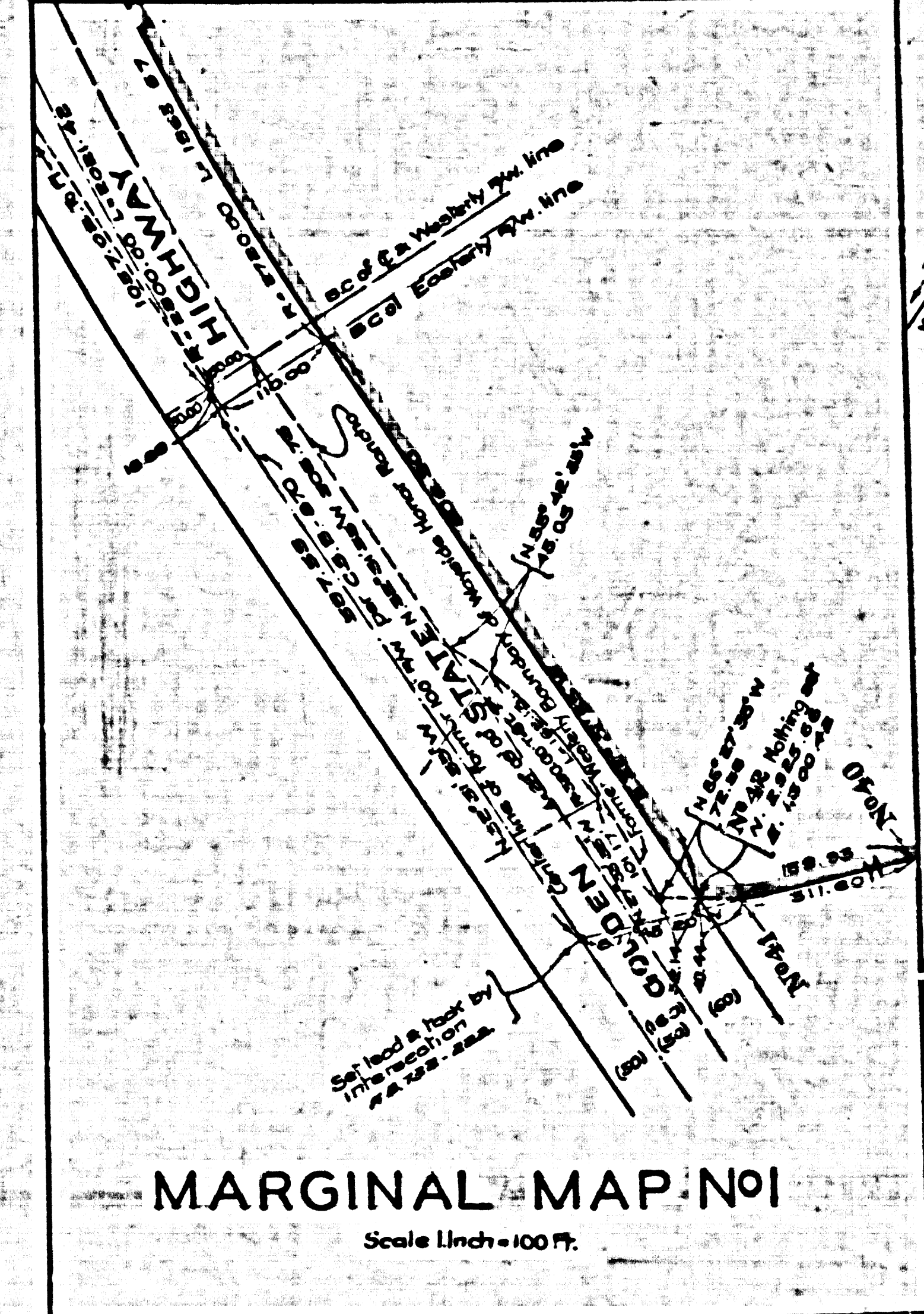
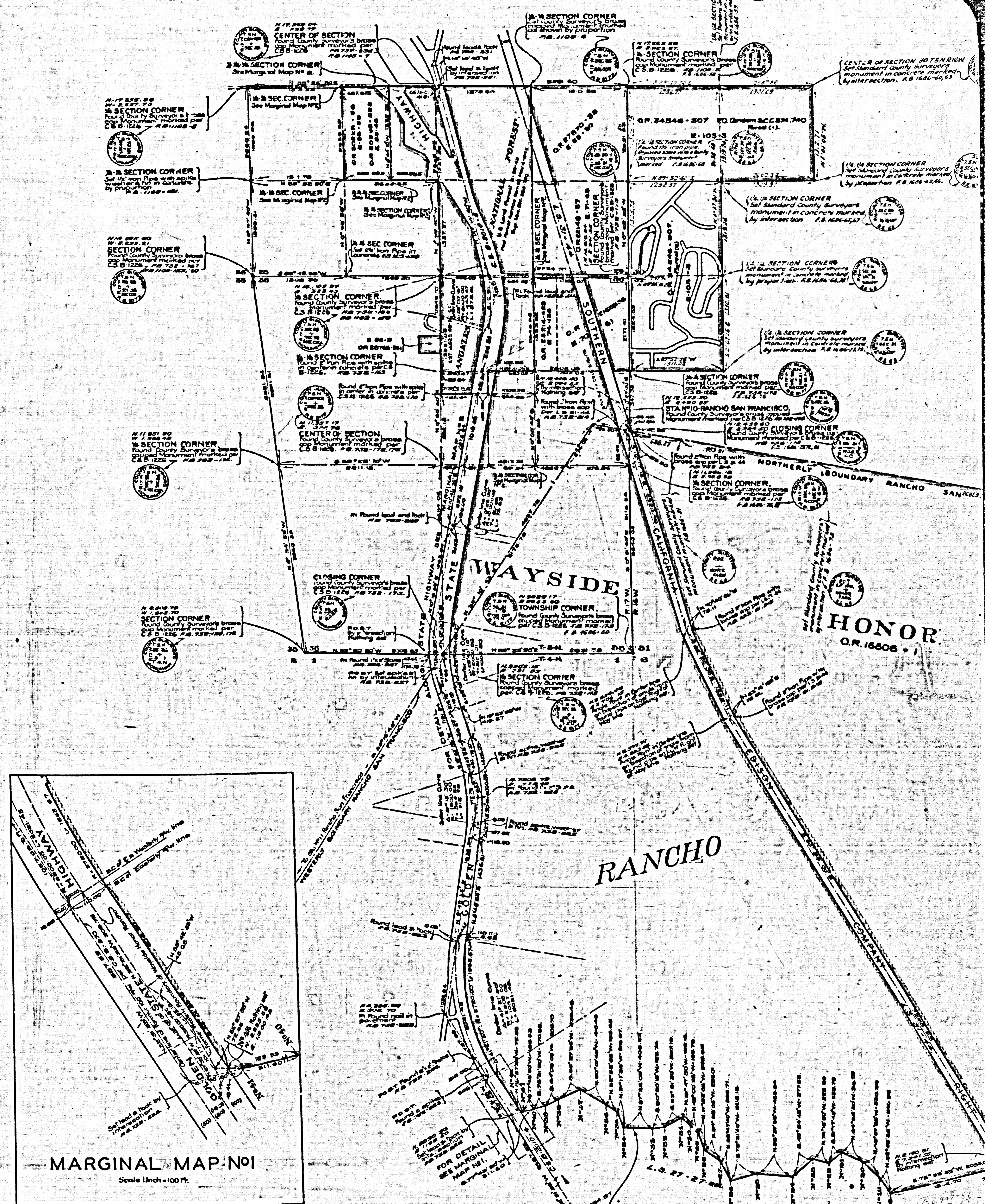
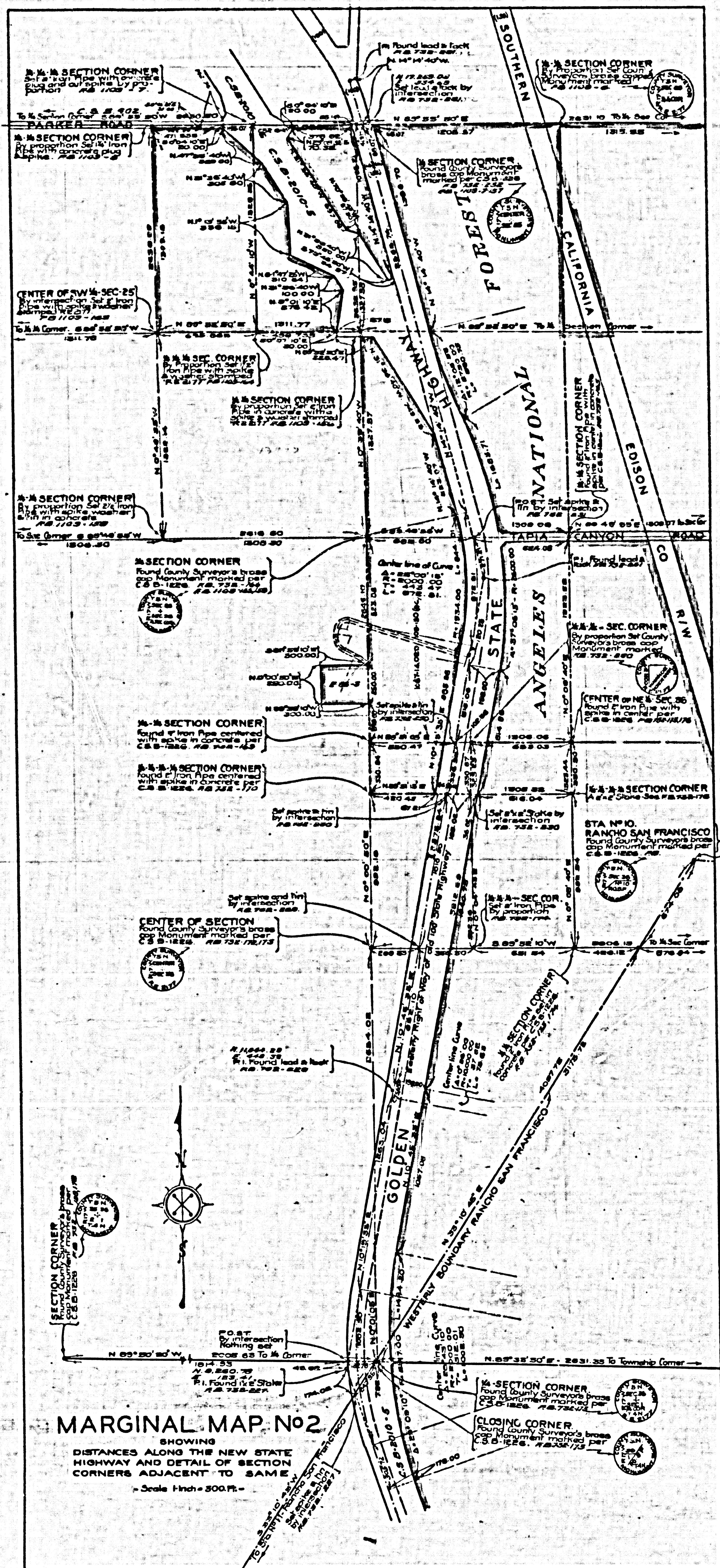


**STATIONS ALONG SOUTHERLY BOUNDARY**

STA.	NORTH	EAST	REMARKS	POINTS SET	F.S. REF.
1	10,888.80	14,771.49	By intersection with Rancho Boundary	Nothing set	
2	10,848.41	13,700.28	By proportion between Sta 1 & Sta 4	Nothing set	
3	10,824.02	12,810.78	By proportion between Sta 1 & Sta 4	Nothing set	
4	10,814.42	12,031.89	Found Iron Pipe, plug and back	(do)	F.S. 732-100
5	10,814.42	11,252.99	(do)	(do)	F.S. 732-100
6	10,814.42	10,474.09	(do)	(do)	F.S. 732-100
7	10,814.42	9,695.19	(do)	(do)	F.S. 732-100
8	10,814.42	8,916.29	(do)	(do)	F.S. 732-100
9	10,814.42	8,137.39	(do)	(do)	F.S. 732-100
10	10,814.42	7,358.49	(do)	(do)	F.S. 732-100
11	10,814.42	6,579.59	(do)	(do)	F.S. 732-100
12	10,814.42	5,800.69	(do)	(do)	F.S. 732-100
13	10,814.42	5,021.79	(do)	(do)	F.S. 732-100
14	10,814.42	4,242.89	(do)	(do)	F.S. 732-100
15	10,814.42	3,463.99	(do)	(do)	F.S. 732-100
16	10,814.42	2,685.09	(do)	(do)	F.S. 732-100
17	10,814.42	1,906.19	(do)	(do)	F.S. 732-100
18	10,814.42	1,127.29	(do)	(do)	F.S. 732-100
19	10,814.42	348.39	(do)	(do)	F.S. 732-100
20	10,814.42	-430.61	(do)	(do)	F.S. 732-100
21	10,814.42	-1,209.71	(do)	(do)	F.S. 732-100
22	10,814.42	-2,000.81	(do)	(do)	F.S. 732-100
23	10,814.42	-2,791.91	(do)	(do)	F.S. 732-100
24	10,814.42	-3,583.01	(do)	(do)	F.S. 732-100
25	10,814.42	-4,374.11	(do)	(do)	F.S. 732-100
26	10,814.42	-5,165.21	(do)	(do)	F.S. 732-100
27	10,814.42	-5,956.31	(do)	(do)	F.S. 732-100
28	10,814.42	-6,747.41	(do)	(do)	F.S. 732-100
29	10,814.42	-7,538.51	(do)	(do)	F.S. 732-100
30	10,814.42	-8,329.61	(do)	(do)	F.S. 732-100
31	10,814.42	-9,120.71	(do)	(do)	F.S. 732-100
32	10,814.42	-9,911.81	(do)	(do)	F.S. 732-100
33	10,814.42	-10,702.91	(do)	(do)	F.S. 732-100
34	10,814.42	-11,494.01	(do)	(do)	F.S. 732-100
35	10,814.42	-12,285.11	(do)	(do)	F.S. 732-100
36	10,814.42	-13,076.21	(do)	(do)	F.S. 732-100
37	10,814.42	-13,867.31	(do)	(do)	F.S. 732-100
38	10,814.42	-14,658.41	(do)	(do)	F.S. 732-100
39	10,814.42	-15,449.51	(do)	(do)	F.S. 732-100
40	10,814.42	-16,240.61	(do)	(do)	F.S. 732-100
41	10,814.42	-17,031.71	(do)	(do)	F.S. 732-100
42	10,814.42	-17,822.81	(do)	(do)	F.S. 732-100
43	10,814.42	-18,613.91	(do)	(do)	F.S. 732-100
44	10,814.42	-19,405.01	(do)	(do)	F.S. 732-100
45	10,814.42	-20,196.11	(do)	(do)	F.S. 732-100
46	10,814.42	-20,987.21	(do)	(do)	F.S. 732-100
47	10,814.42	-21,778.31	(do)	(do)	F.S. 732-100
48	10,814.42	-22,569.41	(do)	(do)	F.S. 732-100
49	10,814.42	-23,360.51	(do)	(do)	F.S. 732-100
50	10,814.42	-24,151.61	(do)	(do)	F.S. 732-100
51	10,814.42	-24,942.71	(do)	(do)	F.S. 732-100
52	10,814.42	-25,733.81	(do)	(do)	F.S. 732-100
53	10,814.42	-26,524.91	(do)	(do)	F.S. 732-100
54	10,814.42	-27,316.01	(do)	(do)	F.S. 732-100
55	10,814.42	-28,107.11	(do)	(do)	F.S. 732-100
56	10,814.42	-28,898.21	(do)	(do)	F.S. 732-100
57	10,814.42	-29,689.31	(do)	(do)	F.S. 732-100
58	10,814.42	-30,480.41	(do)	(do)	F.S. 732-100
59	10,814.42	-31,271.51	(do)	(do)	F.S. 732-100
60	10,814.42	-32,062.61	(do)	(do)	F.S. 732-100
61	10,814.42	-32,853.71	(do)	(do)	F.S. 732-100
62	10,814.42	-33,644.81	(do)	(do)	F.S. 732-100
63	10,814.42	-34,435.91	(do)	(do)	F.S. 732-100
64	10,814.42	-35,227.01	(do)	(do)	F.S. 732-100
65	10,814.42	-36,018.11	(do)	(do)	F.S. 732-100
66	10,814.42	-36,809.21	(do)	(do)	F.S. 732-100
67	10,814.42	-37,600.31	(do)	(do)	F.S. 732-100
68	10,814.42	-38,391.41	(do)	(do)	F.S. 732-100
69	10,814.42	-39,182.51	(do)	(do)	F.S. 732-100
70	10,814.42	-39,973.61	(do)	(do)	F.S. 732-100
71	10,814.42	-40,764.71	(do)	(do)	F.S. 732-100
72	10,814.42	-41,555.81	(do)	(do)	F.S. 732-100
73	10,814.42	-42,346.91	(do)	(do)	F.S. 732-100
74	10,814.42	-43,138.01	(do)	(do)	F.S. 732-100
75	10,814.42	-43,929.11	(do)	(do)	F.S. 732-100
76	10,814.42	-44,720.21	(do)	(do)	F.S. 732-100
77	10,814.42	-45,511.31	(do)	(do)	F.S. 732-100
78	10,814.42	-46,302.41	(do)	(do)	F.S. 732-100
79	10,814.42	-47,093.51	(do)	(do)	F.S. 732-100
80	10,814.42	-47,884.61	(do)	(do)	F.S. 732-100
81	10,814.42	-48,675.71	(do)	(do)	F.S. 732-100
82	10,814.42	-49,466.81	(do)	(do)	F.S. 732-100
83	10,814.42	-50,257.91	(do)	(do)	F.S. 732-100
84	10,814.42	-51,049.01	(do)	(do)	F.S. 732-100
85	10,814.42	-51,840.11	(do)	(do)	F.S. 732-100
86	10,814.42	-52,631.21	(do)	(do)	F.S. 732-100
87	10,814.42	-53,422.31	(do)	(do)	F.S. 732-100
88	10,814.42	-54,213.41	(do)	(do)	F.S. 732-100
89	10,814.42	-55,004.51	(do)	(do)	F.S. 732-100
90	10,814.42	-55,795.61	(do)	(do)	F.S. 732-100
91	10,814.42	-56,586.71	(do)	(do)	F.S. 732-100
92	10,814.42	-57,377.81	(do)	(do)	F.S. 732-100
93	10,814.42	-58,168.91	(do)	(do)	F.S. 732-100
94	10,814.42	-58,960.01	(do)	(do)	F.S. 732-100
95	10,814.42	-59,751.11	(do)	(do)	F.S. 732-100
96	10,814.42	-60,542.21	(do)	(do)	F.S. 732-100
97	10,814.42	-61,333.31	(do)	(do)	F.S. 732-100
98	10,814.42	-62,124.41	(do)	(do)	F.S. 732-100
99	10,814.42	-62,915.51	(do)	(do)	F.S. 732-100
100	10,814.42	-63,706.61	(do)	(do)	F.S. 732-100
101	10,814.42	-64,497.71	(do)	(do)	F.S. 732-100
102	10,814.42	-65,288.81	(do)	(do)	F.S. 732-100
103	10,814.42	-66,079.91	(do)	(do)	F.S. 732-100
104	10,814.42	-66,871.01	(do)	(do)	F.S. 732-100
105	10,814.42	-67,662.11	(do)	(do)	F.S. 732-100
106	10,814.42	-68,453.21	(do)	(do)	F.S. 732-100
107	10,814.42	-69,244.31	(do)	(do)	F.S. 732-100
108	10,814.42	-70,035.41	(do)	(do)	F.S. 732-100
109	10,814.42	-70,826.51	(do)	(do)	F.S. 732-100
110	10,814.42	-71,617.61	(do)	(do)	F.S. 732-100
111	10,814.42	-72,408.71	(do)	(do)	F.S. 732-100
112	10,814.42	-73,200.81	(do)	(do)	F.S. 732-100
113	10,814.42	-73,991.91	(do)	(do)	F.S. 732-100
114	10,814.42	-74,783.01	(do)	(do)	F.S. 732-100
115	10,814.42	-75,574.11	(do)	(do)	F.S. 732-100
116	10,814.42	-76,365.21	(do)	(do)	F.S. 732-100
117	10,814.42	-77,156.31	(do)	(do)	F.S. 732-100
118	10,814.42	-77,947.41	(do)	(do)	F.S. 732-100
119	10,814.42	-78,738.51	(do)	(do)	F.S. 732-100
120	10,814.42	-79,529.61	(do)	(do)	F.S. 732-100
121	10,814.42	-80,320.71	(do)	(do)	F.S. 732-100
122	10,814.42	-81,111.81	(do)	(do)	F.S. 732-100
123	10,814.42	-81,902.91	(do)	(do)	F.S. 732-100
124	10,814.42	-82,694.01	(do)	(do)	F.S. 732-100
125	10,814.42	-83,485.11	(do)	(do)	F.S. 732-100
126	10,814.42	-84,276.21	(do)	(do)	F.S. 732-100
127	10,814.42	-85,067.31	(do)	(do)	F.S. 732-100
128	10,814.42	-85,858.41	(do)	(do)	F.S. 732-100
129	10,814.42	-86,649.51	(do)	(do)	F.S. 732-100
130	10,814.42	-87,440.61	(do)	(do)	F.S. 732-100
131	10,814.42	-88,231.71	(do)	(do)	F.S. 732-100
132	10,814.42	-89,022.81	(do)	(do)	F.S. 732-100
133	10,814.42	-89,813.91	(do)	(do)	F.S. 732-100
134	10,814.42	-90,605.01	(do)	(do)	F.S. 732-100
135	10,814.42	-91,396.11	(do)	(do)	F.S. 732-100
136	10,814.42	-92,187.21	(do)	(do)	F.S. 732-100
137	10,814.42	-92,978.31	(do)	(do)	F.S. 732-100
138	10,814.42	-93,769.41	(do)	(do)	F.S. 732-100
139	10,814.42	-94,560.51	(do)	(do)	F.S. 732-100
140	10,814.42	-95,351.61	(do)	(do)	F.S. 732-100
141	10,814.42	-96,142.71	(do)	(do)	F.S. 732-100
142	10,814.42	-96,933.81	(do)	(do)	F.S. 732-100
143	10,814.42	-97,724.91	(do)	(do)	F.S. 732-100
144	10,814.42	-98,516.01	(do)	(do)	F.S. 732-100
145	10,814.42	-99,307.11	(do)	(do)	F.S. 732-100
146	10,814.42	-100,098.21	(do)	(do)	F.S. 732-100
147	10,814.42	-100,889.31	(do)	(do)	F.S. 732-100
148	10,814.42	-101,680.41	(do)	(do)	F.S. 732-100
149	10,814.42	-102,471.51	(do)	(do)	F.S. 732-100
150	10,814.42	-103,262.61	(do)	(do)	F.S. 732-100
151	10,814.42	-104,053.71	(do)	(do)	F.S. 732-100
152	10,814.42	-104,844.81	(do)	(do)	F.S. 732-100
153	10,814.42	-105,635.91	(do)	(do)	F.S. 732-100
154	10,814.42	-106,427.01	(do)	(do)	F.S. 732-100
155	10,814.42	-107,218.11	(do)	(do)	F.S. 732-100
156	10,814.42	-108,009.21	(do)	(do)	F.S. 732-100
157	10,814.42	-108,800.31	(do)	(do)	F.S. 732-100
158	10,814.42	-109,591.41	(do)	(do)	F.S. 732-100
159	10,814.42	-110,382.51	(do)	(do)	F.S. 732-100
160	10,814.42	-111,173.61	(do)	(do)	F.S. 732-100
161	10,814.42	-111,964.71	(do)	(do)	F.S. 732-100
162	10,814.42	-112,755.81	(do)	(do)	F.S. 732-100
163	10,814.42	-113,546.91	(do)	(do)	F.S. 732-100
164	10,814.42	-114,338.01	(do)	(do)	F.S. 732-100
165	10,814.42	-115,129.11	(do)	(do)	F.S. 732-100
166	10,814.42	-115,920.21	(do)	(do)	F.S. 732-100
167	10,814.42	-116,711.31	(do)	(do)	F.S. 732-100
168	10,814.42	-117,502.41	(do)	(do)	F.S. 732-100
169	10,814.42	-118,293.51	(do)	(do)	F.S. 732-100
170	10,814.42	-119,084.61	(do)	(do)	F.S. 732-100
171	10,814.42	-119,875.71	(do)	(do)	F.S. 732-100
172	10,814.42	-120,666.81	(do)	(do)	F.S. 732-100
173	10,814.42	-121,457.91	(do)	(do)	F.S. 732-100
174	10,814.42	-122,249.01	(do)	(do)	F.S. 732-100
175	10,814.42	-123,040.11	(do)	(do)	F.S. 732-100
176	10,814.42	-123,831.21	(do)	(do)	F.S. 732-100
177	10,814.42	-124,622.31	(do)	(do)	F.S. 732-100
178	10,814.42	-125,413.41	(do)	(do)	F.S. 732-100
179	1				





CSB-1638  
 A2 OF A2

SOUTHERLY BOUNDARY WAYSIDE HONOR RANCHO - FOR COORDINATES