

MAP OF
SAN FRANCISQUITO CANYON ROAD
 FROM
 ELIZABETH LAKE - PINE CANYON ROAD
 TO
 N.W. 1/4 SECTION 14, T. 6 N., R. 15 W., S.B.M.

COUNTY SURVEYORS MAP NO B-1640
 SHEET NO 2 OF 2 SHEETS
 SCALE - 1 INCH = 100 FT.
 JOB NUMBER 8280

ALFRED JONES - COUNTY SURVEYOR
 SURVEYED - APRIL 1940 TO JANUARY 1941

SURVEYED AT THE VERBAL REQUEST OF THE COUNTY ROAD COMMISSIONER UNDER RULE 21, ORD. NO 829, FOR THE PURPOSE OF FIXING A CENTER LINE OF THE PRESENT TRAVELED ROAD.
 BEARINGS ARE BASED ON BEARING OF SOUTH LINE SECTION 32, T. 7 N., R. 14 W. AS SHOWN ON C.S. B-1073-2

F. S. 848 - 71-188
 FIELD WORK BY..... E. A. ROSECRANS
 OFFICE WORK BY..... K. R. MC PHERSON
 CHECKED BY..... A. E. TIMMONS
 CHECKED BY..... K. R. MC PHERSON

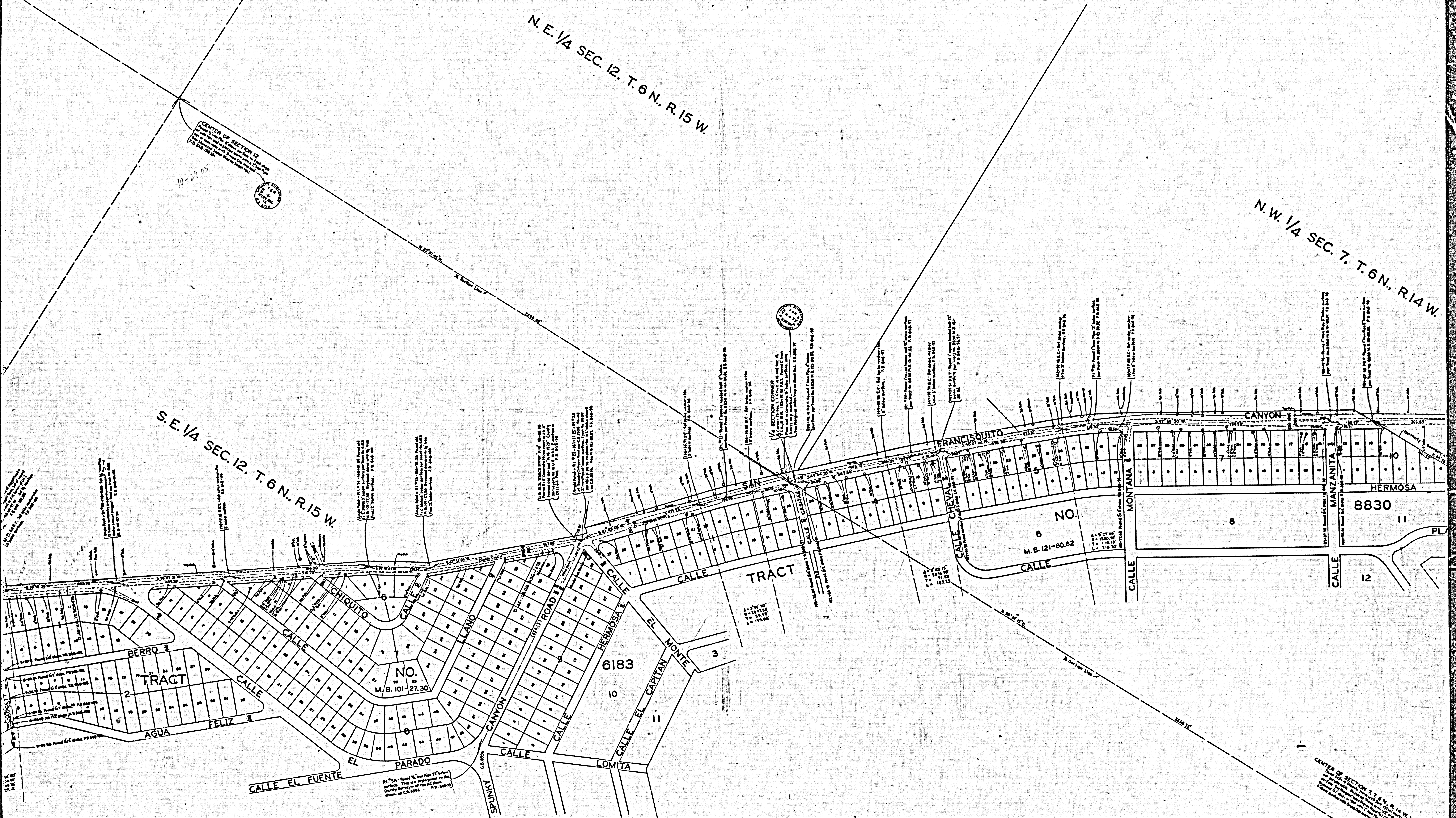
INDEX NO 8-75
 Map Size: 2x15

CSB-1640-2
 A1 OF A4

N. E. 1/4 SEC. 12. T. 6 N. R. 15 W.

N. W. 1/4 SEC. 7. T. 6 N. R. 14 W.

S. E. 1/4 SEC. 12. T. 6 N. R. 15 W.



CENTER OF SECTION 12
 This map is a reproduction of the original
 filed in the office of the County Clerk
 of Santa Clara County, California, on
 10-29-05

SECTION CORNER
 This is a reproduction of the original
 filed in the office of the County Clerk
 of Santa Clara County, California, on
 10-29-05

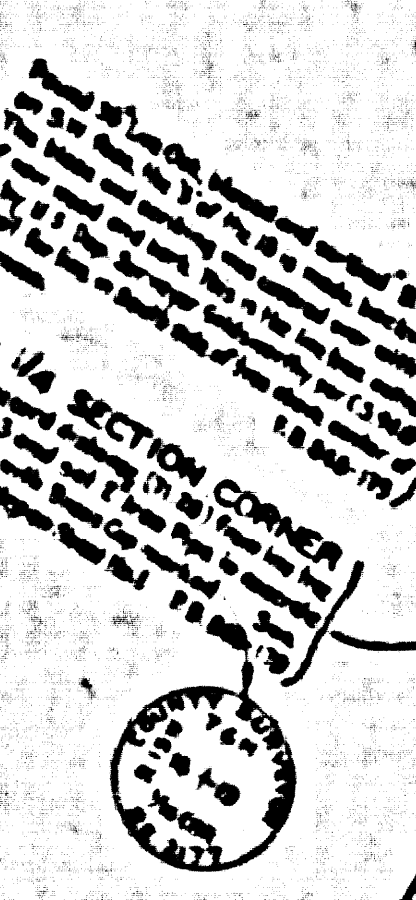
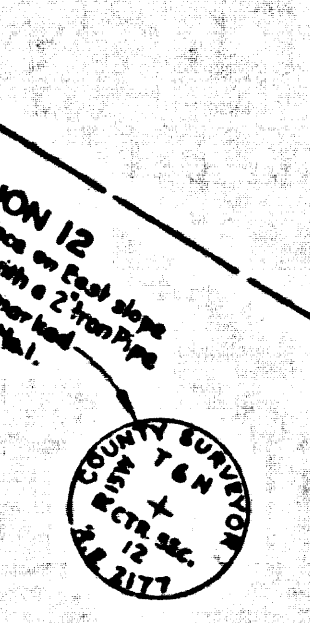
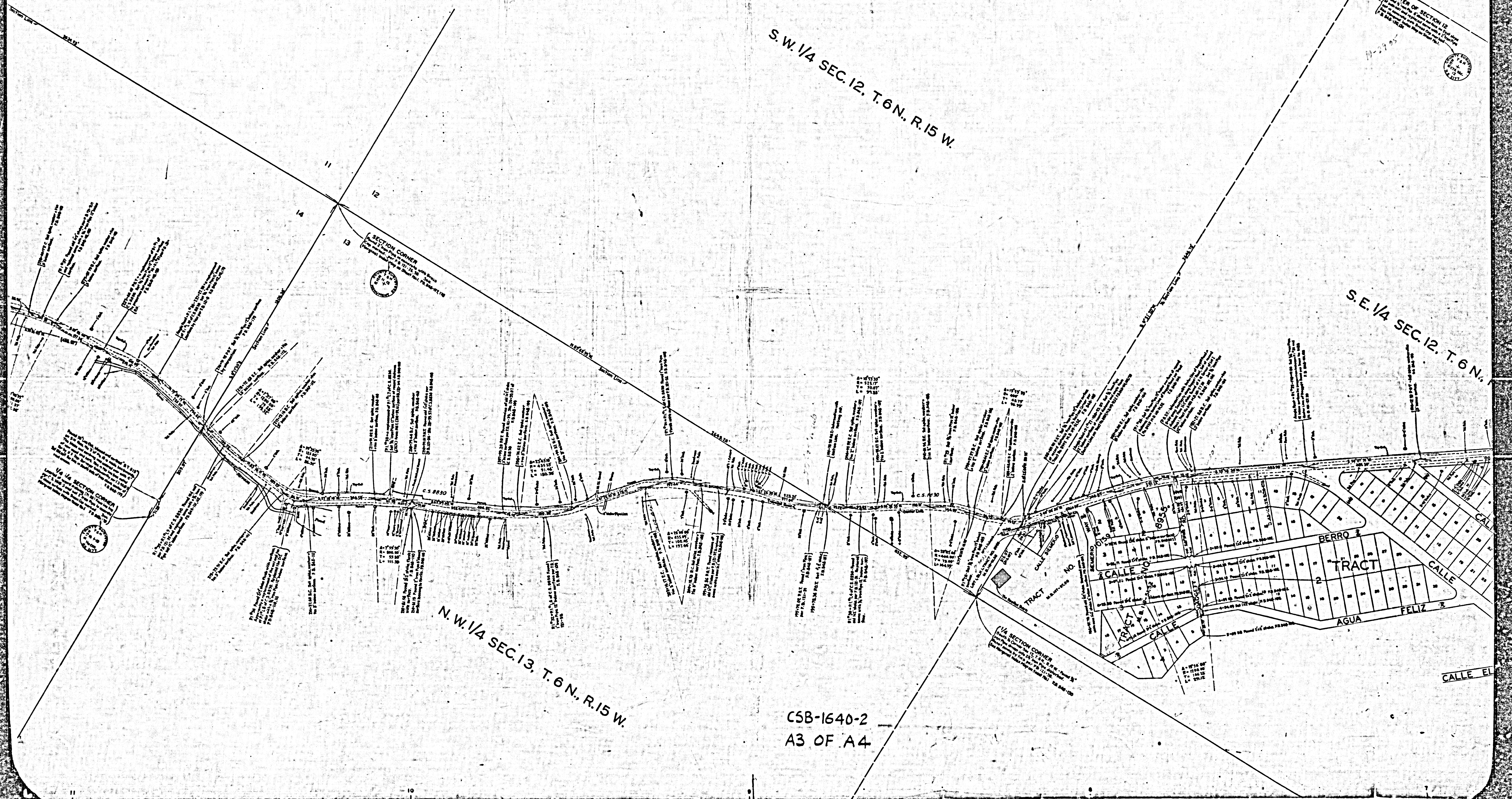
CENTER OF SECTION 7, T. 6 N. R. 14 W.
 This map is a reproduction of the original
 filed in the office of the County Clerk
 of Santa Clara County, California, on
 10-29-05

S. W. 1/4 SEC. 12, T. 6 N., R. 15 W.

S. E. 1/4 SEC. 12, T. 6 N., R. 15 W.

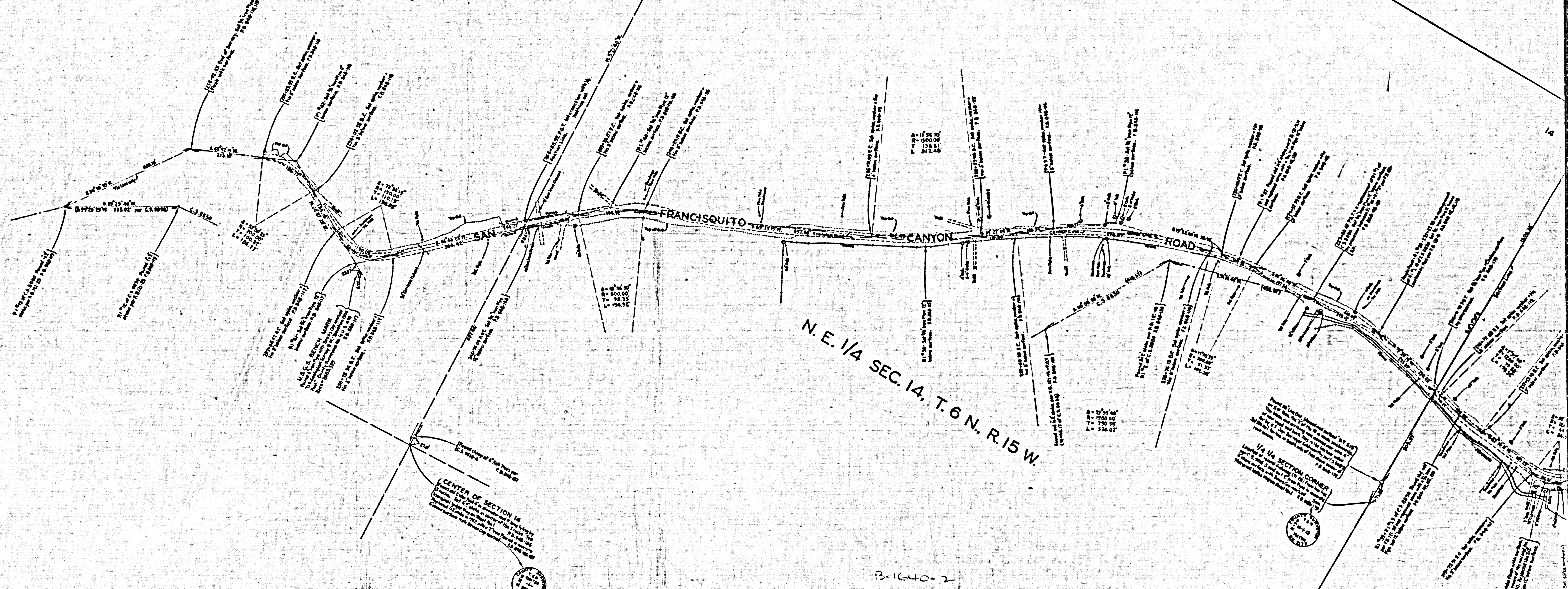
N. W. 1/4 SEC. 13, T. 6 N., R. 15 W.

CSB-1640-2
A3 OF A4



N. W. 1/4 SEC. 14, T. 6 N., R. 15 W.

N. E. 1/4 SEC. 14, T. 6 N., R. 15 W.



CENTER OF SECTION 14
[Detailed description of the center point location and survey data]

B-1640-2

CSB-1640-2
A4 OF A4