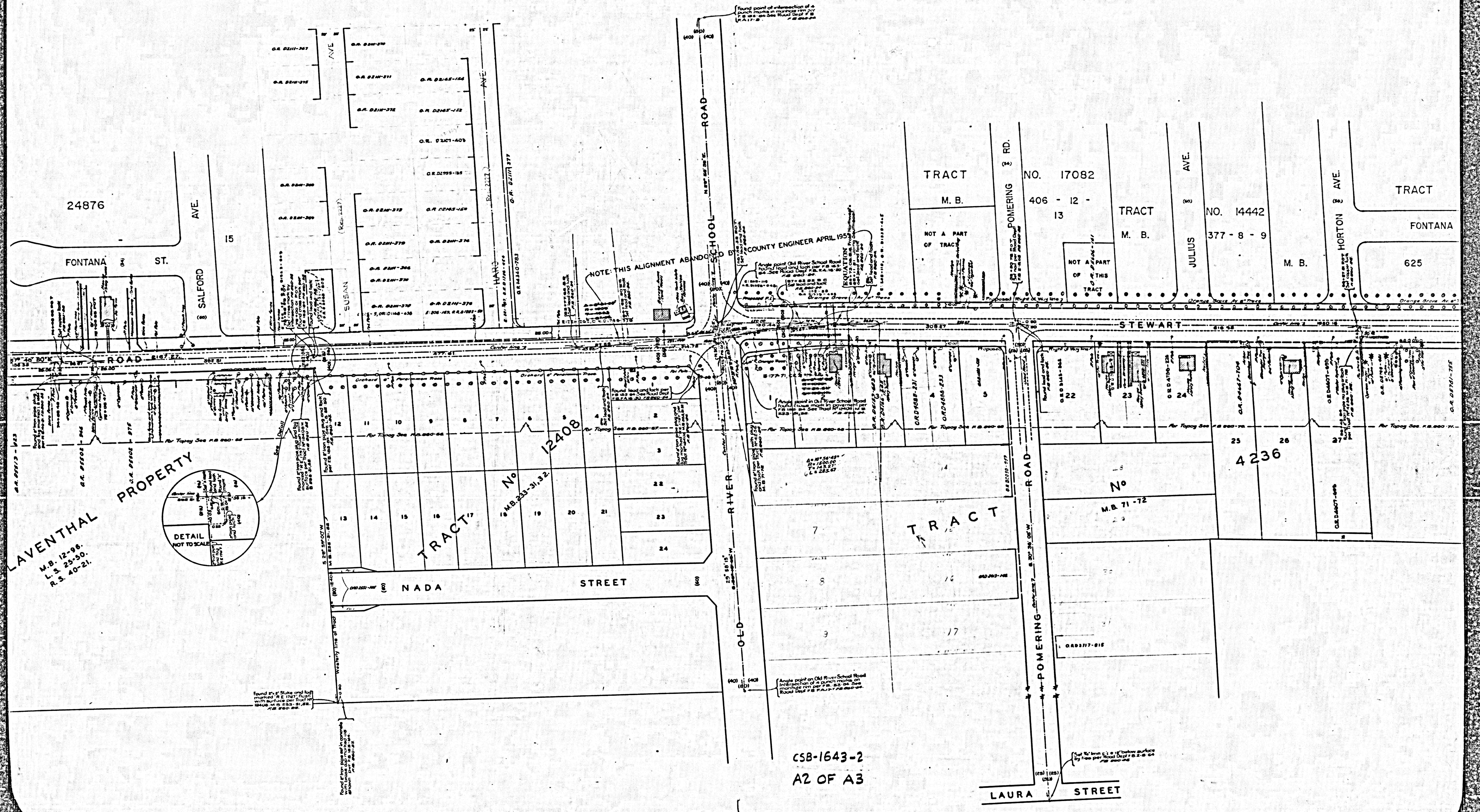


MAP OF
SOUTHERN AVENUE
 AND
STEWART AND GRAY ROAD
 FROM
 ATLANTIC AVENUE
 TO
FIRESTONE BOULEVARD
 COUNTY SURVEYORS MAP NO. B-1643
 SHEET NO. 2 OF 3 SHEETS
 SCALE: 1 INCH = 50 FT.

JOB NUMBER: - 8306.
 ALFRED JONES - COUNTY SURVEYOR
 SURVEYED JAN. - MAY 1941.
 SURVEYED UPON REQUEST OF THE REGIONAL
 PLANNING COMMISSION PER RULE 21. ORD.
 929. BY LETTER DATED JAN. 2, 1941, AND
 UNDER INSTRUCTIONS OF THE BOARD OF
 SUPERVISORS PER ORDER DATED JUNE 1, 1938.
 BEARINGS ARE BASED ON THE BEARING OF
 FIRESTONE BOULEVARD PER C.S. 8818.
 F.B. 880 - 5 - 94.
 FIELD WORK BY L.D. MOORE.
 OFFICE WORK BY H.M. HIGGINS.
 CHECKED BY A.M. DREW.

CSB-1643-2
 A1 OF A3

TRACTS ADDED MARCH, 1973 - 980



24876

FONTANA ST.

SALFORD AVE

15

O.R. 0211-267
 O.R. 0211-268
 O.R. 0211-269
 O.R. 0211-270
 O.R. 0211-271
 O.R. 0211-272
 O.R. 0211-273
 O.R. 0211-274
 O.R. 0211-275
 O.R. 0211-276
 O.R. 0211-277
 O.R. 0211-278
 O.R. 0211-279
 O.R. 0211-280
 O.R. 0211-281
 O.R. 0211-282
 O.R. 0211-283
 O.R. 0211-284
 O.R. 0211-285
 O.R. 0211-286
 O.R. 0211-287
 O.R. 0211-288
 O.R. 0211-289
 O.R. 0211-290
 O.R. 0211-291
 O.R. 0211-292
 O.R. 0211-293
 O.R. 0211-294
 O.R. 0211-295
 O.R. 0211-296
 O.R. 0211-297
 O.R. 0211-298
 O.R. 0211-299
 O.R. 0211-300
 O.R. 0211-301
 O.R. 0211-302
 O.R. 0211-303
 O.R. 0211-304
 O.R. 0211-305
 O.R. 0211-306
 O.R. 0211-307
 O.R. 0211-308
 O.R. 0211-309
 O.R. 0211-310
 O.R. 0211-311
 O.R. 0211-312
 O.R. 0211-313
 O.R. 0211-314
 O.R. 0211-315
 O.R. 0211-316
 O.R. 0211-317
 O.R. 0211-318
 O.R. 0211-319
 O.R. 0211-320
 O.R. 0211-321
 O.R. 0211-322
 O.R. 0211-323
 O.R. 0211-324
 O.R. 0211-325
 O.R. 0211-326
 O.R. 0211-327
 O.R. 0211-328
 O.R. 0211-329
 O.R. 0211-330
 O.R. 0211-331
 O.R. 0211-332
 O.R. 0211-333
 O.R. 0211-334
 O.R. 0211-335
 O.R. 0211-336
 O.R. 0211-337
 O.R. 0211-338
 O.R. 0211-339
 O.R. 0211-340
 O.R. 0211-341
 O.R. 0211-342
 O.R. 0211-343
 O.R. 0211-344
 O.R. 0211-345
 O.R. 0211-346
 O.R. 0211-347
 O.R. 0211-348
 O.R. 0211-349
 O.R. 0211-350
 O.R. 0211-351
 O.R. 0211-352
 O.R. 0211-353
 O.R. 0211-354
 O.R. 0211-355
 O.R. 0211-356
 O.R. 0211-357
 O.R. 0211-358
 O.R. 0211-359
 O.R. 0211-360
 O.R. 0211-361
 O.R. 0211-362
 O.R. 0211-363
 O.R. 0211-364
 O.R. 0211-365
 O.R. 0211-366
 O.R. 0211-367
 O.R. 0211-368
 O.R. 0211-369
 O.R. 0211-370
 O.R. 0211-371
 O.R. 0211-372
 O.R. 0211-373
 O.R. 0211-374
 O.R. 0211-375
 O.R. 0211-376
 O.R. 0211-377
 O.R. 0211-378
 O.R. 0211-379
 O.R. 0211-380
 O.R. 0211-381
 O.R. 0211-382
 O.R. 0211-383
 O.R. 0211-384
 O.R. 0211-385
 O.R. 0211-386
 O.R. 0211-387
 O.R. 0211-388
 O.R. 0211-389
 O.R. 0211-390
 O.R. 0211-391
 O.R. 0211-392
 O.R. 0211-393
 O.R. 0211-394
 O.R. 0211-395
 O.R. 0211-396
 O.R. 0211-397
 O.R. 0211-398
 O.R. 0211-399
 O.R. 0211-400

NOTE: THIS ALIGNMENT ABANDONED

Found point of intersection of a punch mark in monument...

COUNTY ENGINEER APRIL 1950

TRACT NO. 17082

NOT A PART OF TRACT

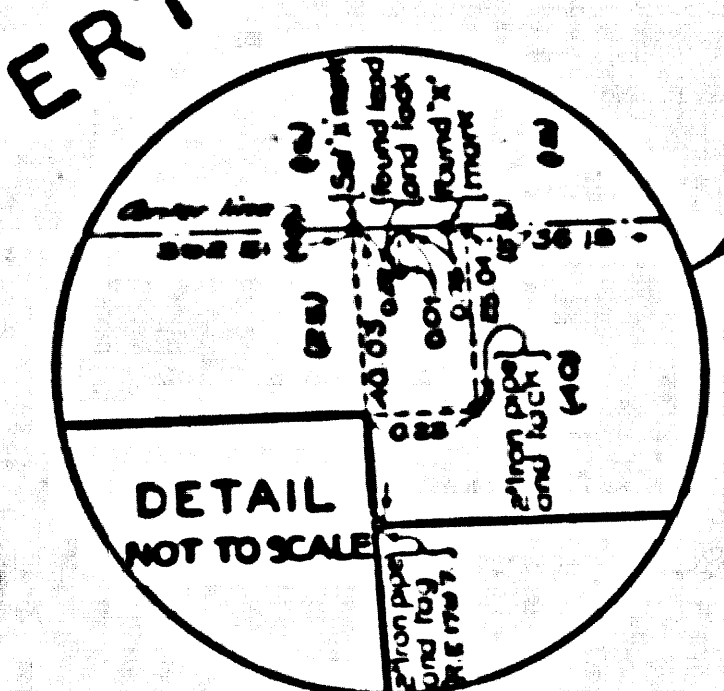
TRACT NO. 14442

NOT A PART OF THIS TRACT

TRACT FONTANA

TRACT 625

LAVENTHAL PROPERTY
 M.B. 12-96.
 L.S. 25-30.
 R.S. 40-21.



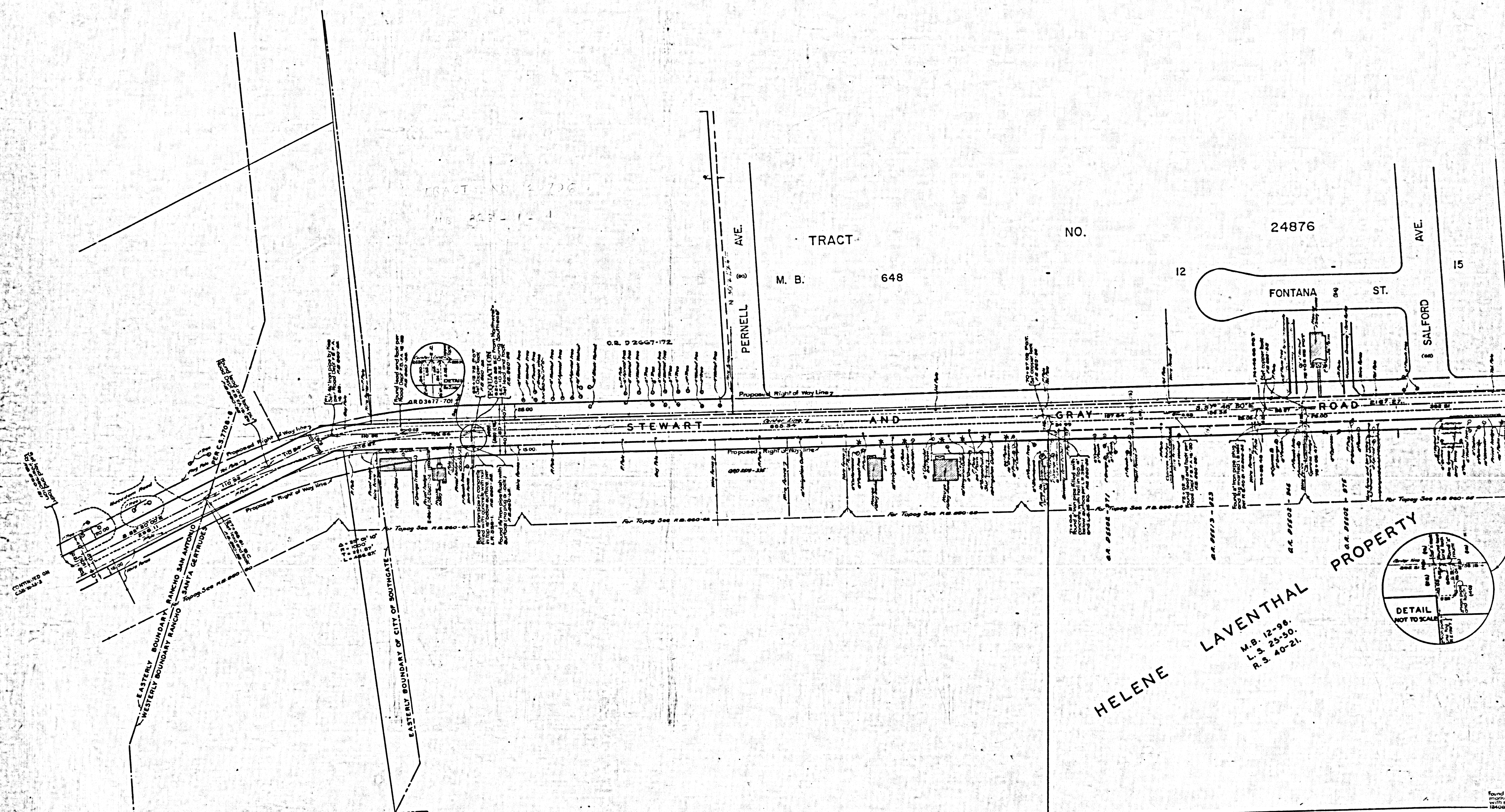
TRACT No 12408

TRACT No 4236

TRACT

CSB-1643-2
 A2 OF A3

LAURA STREET

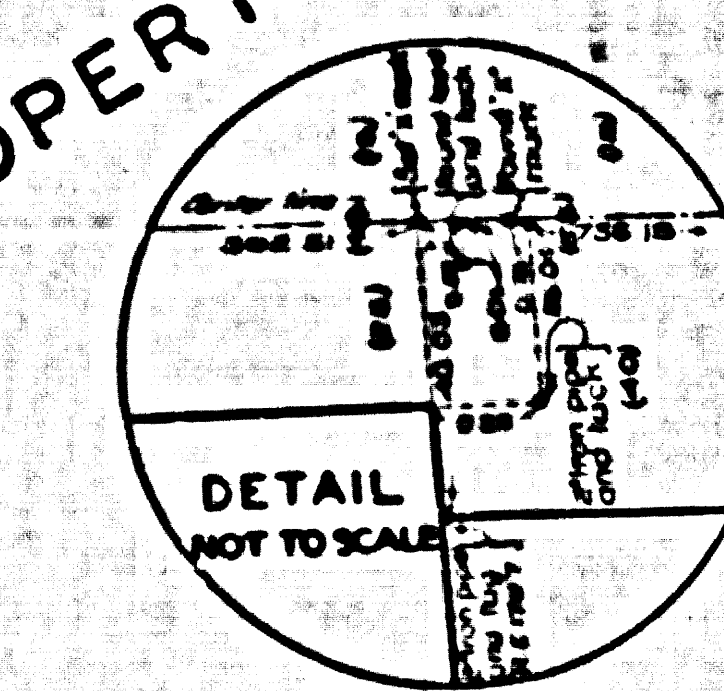


TRACT NO. 24876
M. B. 648

TRACT NO. 24876
M. B. 648

EASTERN BOUNDARY OF CITY OF SOUTHCATE
WESTERN BOUNDARY OF CITY OF SOUTHCATE
EASTERN BOUNDARY OF CITY OF SOUTHCATE
WESTERN BOUNDARY OF CITY OF SOUTHCATE
RANCHO SAN ANTONIO
SANTA GERTRUDE

HELENE LAVENTHAL PROPERTY
M.B. 12-98.
L.S. 23-30.
R.S. 40-21.



CSB-1643-2
A3 OF A3

Found Plat
improved in
1940s, etc.