

COUNTY OF LOS ANGELES  
 MAP OF  
**GRAND AVENUE**  
 FROM  
 ROWLAND AVENUE  
 TO  
**SIERRA MADRE AVENUE**  
 COUNTY SURVEYORS MAP NO. B-1645  
 SHEET NO. 3 OF 4 SHEETS  
 SCALE: 1 INCH = 100 FT.

JOB NUMBER 7132  
 WILLIAM J. FOX - COUNTY SURVEYOR  
 SURVEYED MARCH 1936 TO JULY 1940  
 SURVEYED UNDER INSTRUCTIONS OF THE  
 BOARD OF SUPERVISORS PER ORDER DATED  
 MARCH 21, 1932 AND ON REQUEST OF THE  
 REGIONAL PLANNING COMMISSION UNDER  
 SEC. 78 ORD. 4098 BY LETTER DATED SEPT. 4,  
 1952, AND BY BOARD ORDER DATED DEC. 11 1954  
 BEARINGS ARE BASED ON THE CALIFORNIA  
 COORDINATE SYSTEM ZONE 7 PER ACT 8351  
 GENERAL LAWS. SEE C.S. 9423  
 F. B. 632-69-100; 193-280  
 FIELD WORK BY: C. A. BENSON  
 OFFICE WORK BY: A. N. HELLSTROM  
 CHECKED BY: S. SHIMODA  
 D. M. FINLEY  
 INDEX 47 INDEX 48

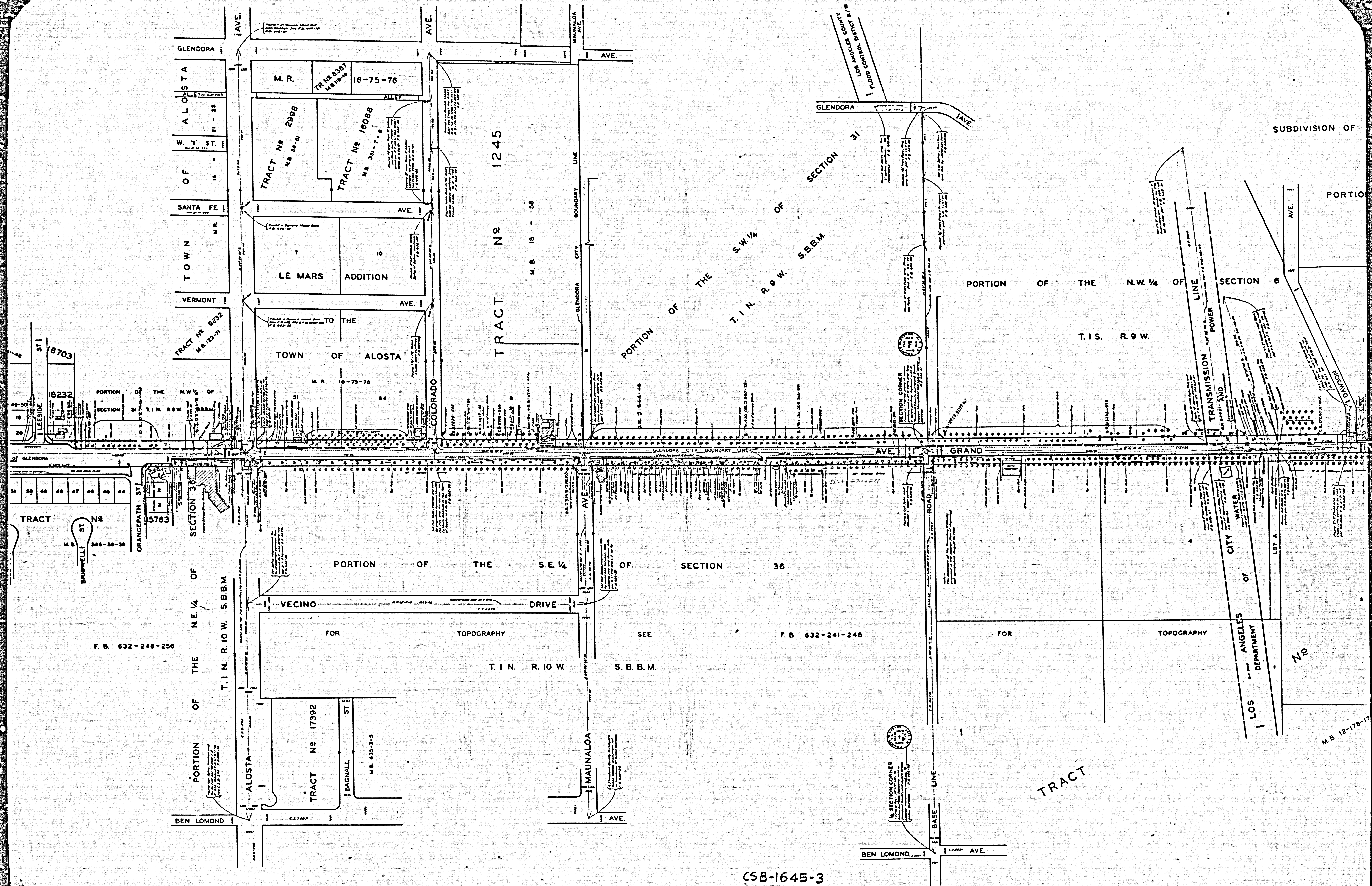
REVISED AUGUST 1954 BY S.S.  
 DECEMBER

CSB-1645-3  
 A1 OF A3

SHEET NO. 3 OF 4 SHEETS

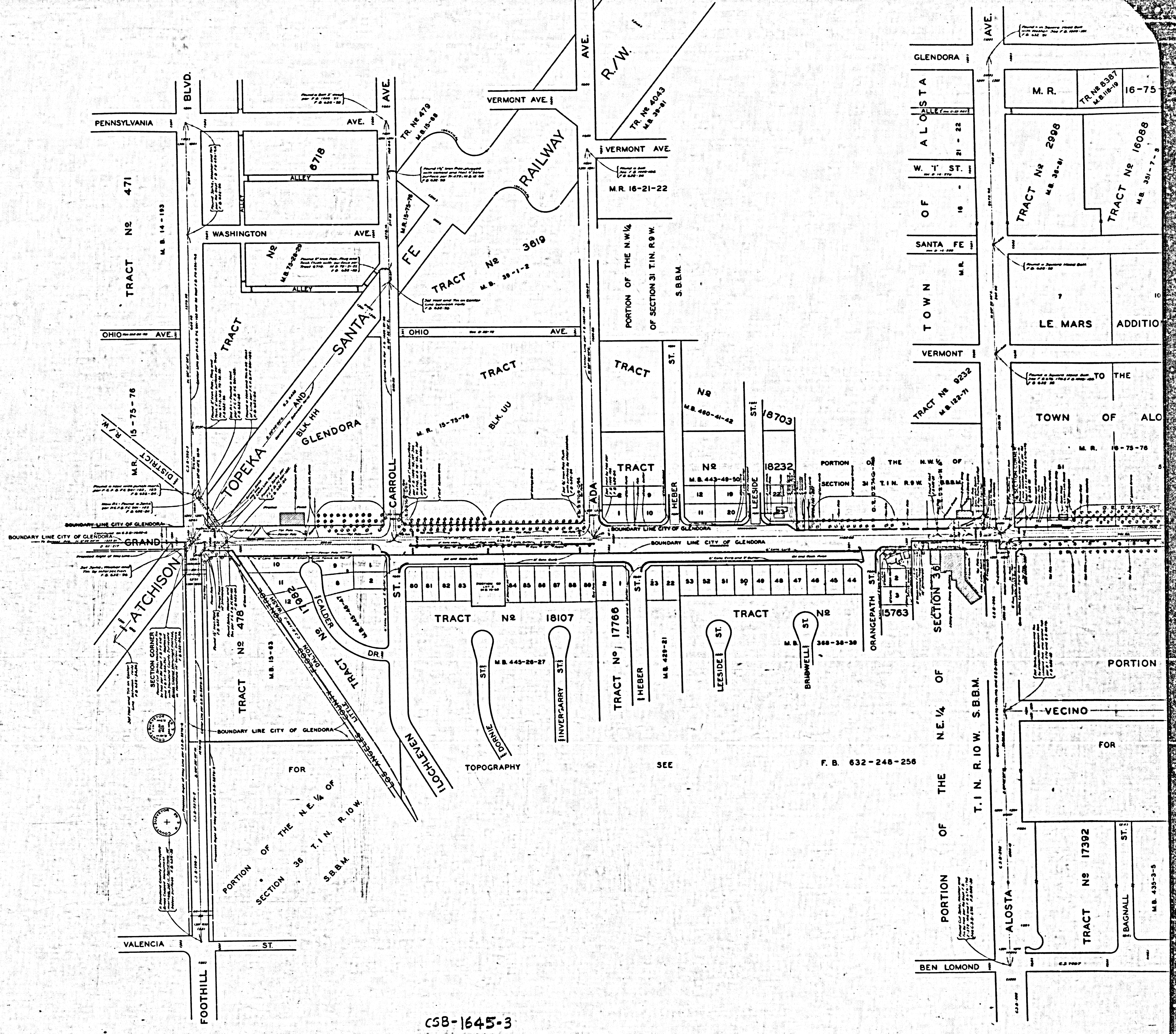
COUNTY SURVEYORS MAP NO. B-1645





CSB-1645-3  
A2 OF A3





CSB-1645-3  
A3 OF A3