

COUNTY OF LOS ANGELES
 MAP OF
BARRANCA AVENUE
 FROM
SAN BERNARDINO ROAD
 TO
SIERRA MADRE AVENUE
 COUNTY SURVEYORS MAP NO. B-1646
 SHEET NO. 1 OF 2 SHEETS
 SCALE: 1 INCH = 100 FT.

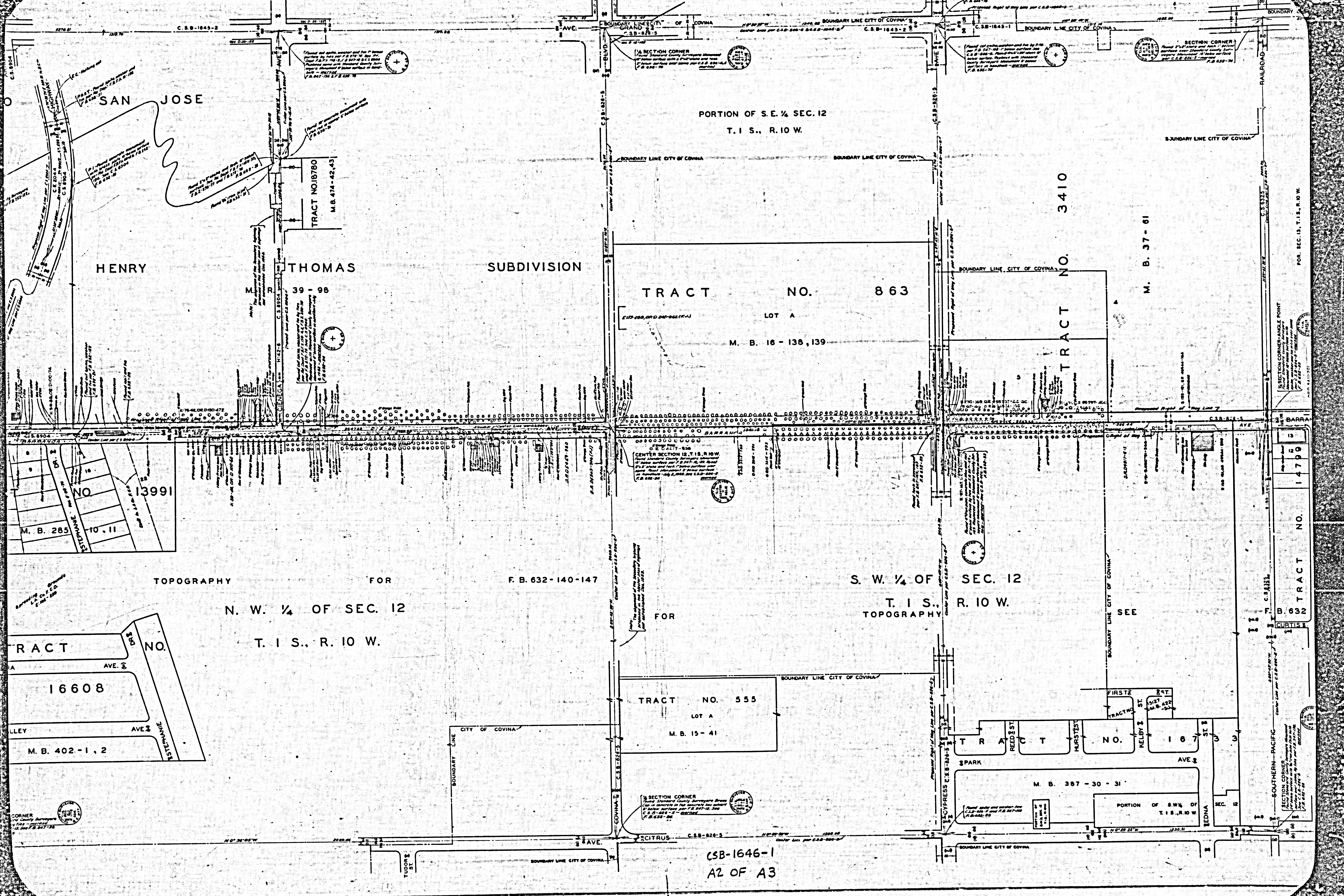
JOB NUMBER 0074.05
 WILLIAM J. FOX-COUNTY SURVEYOR
 SURVEYED MAR. TO JULY 1936; SEPT. TO JUN 1940
 SURVEYED ON REQUEST OF THE REGIONAL
 PLANNING COMMISSION UNDER SEC. 79,
 ORD. 4099 BY LETTER DATED MAR. 25, 1952
 AND BY BOARD ORDER DATED MAR. 21, 1952
 AND DEC. 11, 1951.
 BEARINGS ARE BASED ON THE CALIFORNIA
 COORDINATE SYSTEM ZONE 7 PER ACT 8351
 GENERAL LAWS SEE C.S. 9423
 1. 8.632-18 TO 56, 131 TO 190
 FIELD WORK BY C.A. BENSON
 A.M. HELLSTROM
 E.S. TOMBLESON
 OFFICE WORK BY R.L. GREEN
 CHECKED BY D.M. FINLEY

CSB-1646-1
 A1 OF A3

NOTE: ALL CORNER CUT-OFFS CONFORM TO
 SUBDIVISION STANDARDS UNLESS OTHERWISE
 NOTED.

COUNTY OF LOS ANGELES
 COUNTY ENGINEER
 SHEET NO. 1 OF 2 SHEETS

COUNTY ENGINEER
 SHEET NO. 1 OF 2 SHEETS
 COUNTY ENGINEER MAP NO. B-1646



SAN JOSE

HENRY

THOMAS

SUBDIVISION

PORTION OF S. E. 1/4 SEC. 12
T. 1 S., R. 10 W.

TRACT NO. 863

LOT A
M. B. 16 - 138, 139

TRACT NO. 3410

M. B. 37 - 61

TOPOGRAPHY FOR
N. W. 1/4 OF SEC. 12
T. 1 S., R. 10 W.

F. B. 632 - 140 - 147

S. W. 1/4 OF SEC. 12
T. 1 S., R. 10 W.
TOPOGRAPHY

SEE

TRACT NO.

16608

TRACT NO. 555

LOT A
M. B. 15 - 41

TRACT NO. 1673

M. B. 387 - 30 - 31

PORTION OF S.W. 1/4 OF
T. 1 S., R. 10 W.

CSB-1646-1
A2 OF A3

POR. SEC. 13, T. 1 S., R. 10 W.

TRACT NO. 14790

TRACT NO. 1673

CORNER
1/4 SECTION CORNER

1/4 SECTION CORNER

SECTION CORNER

1/4 SECTION CORNER-ANGLE POINT

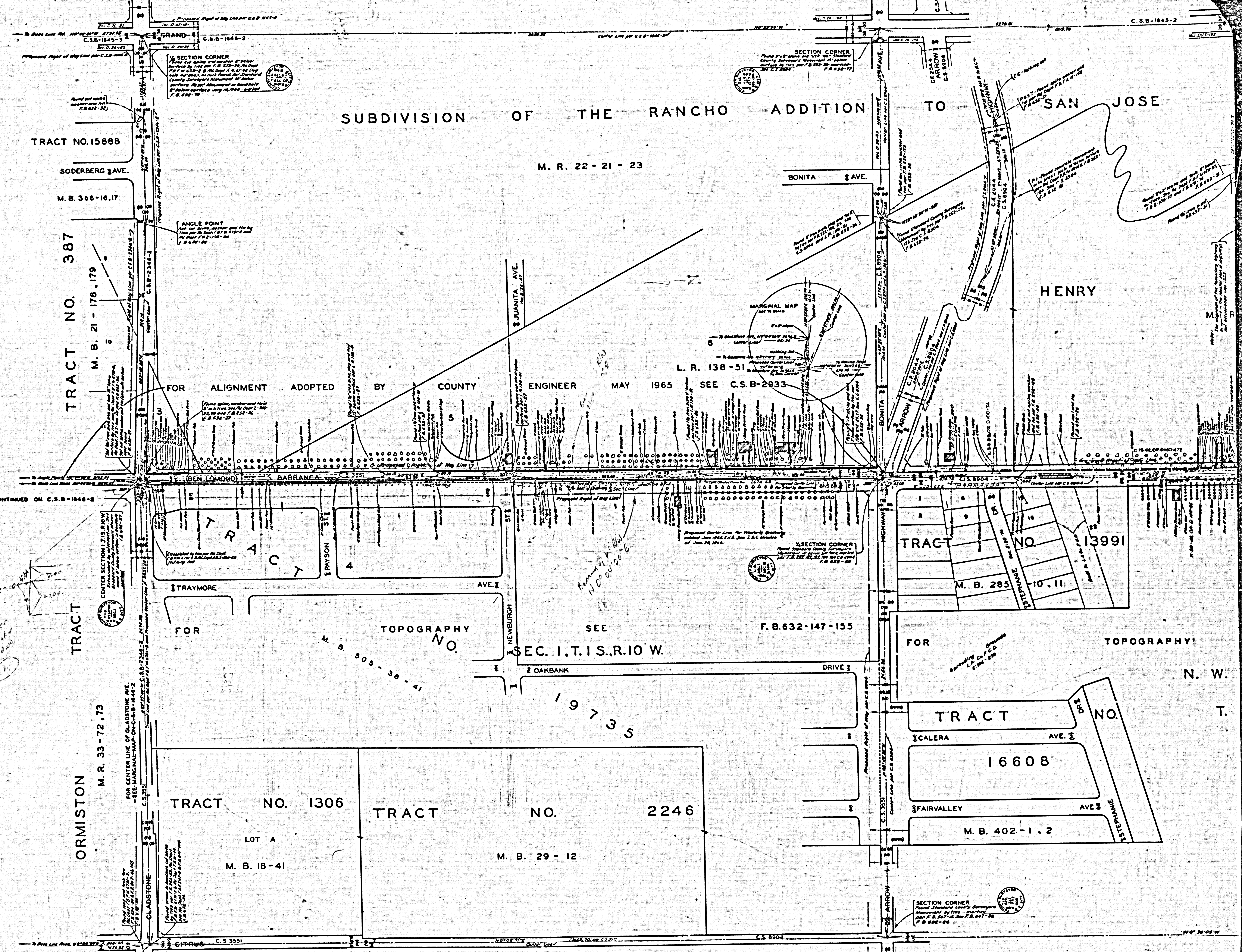
SECTION CORNER

SOUTHERN-PACIFIC

SECTION CORNER

SHEET NO. 1 OF 5 SHEETS
CONTRACT NO. 201402-445 MC E-1878

SHEET NO. 1 OF 5 SHEETS
CONTRACT NO. 201402-445 MC E-1878



SUBDIVISION OF THE RANCHO ADDITION TO SAN JOSE

M. R. 22 - 21 - 23

TRACT NO. 15888

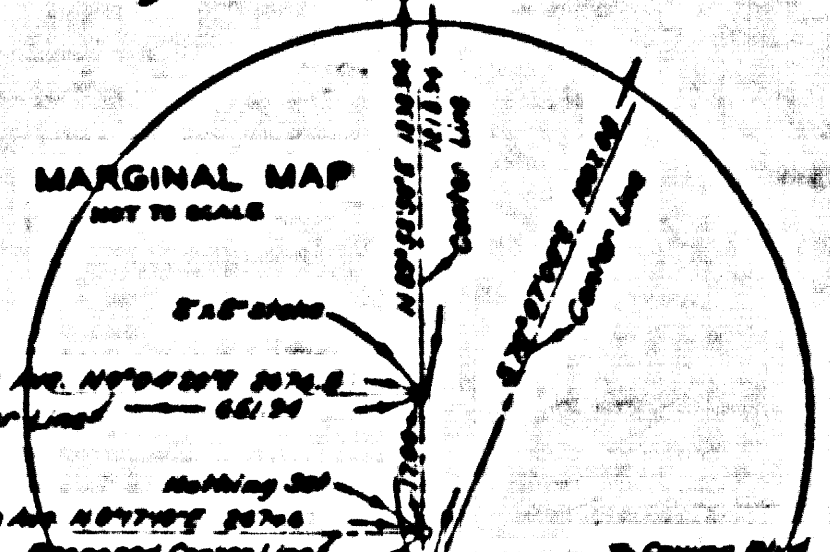
SODERBERG AVE.

M. B. 368 - 16.17

TRACT NO. 387
M. B. 21 - 178, 179

ANGLE POINT
See map sheet 15888-1
M.B. 368-16.17
F.B. 632-147

FOR ALIGNMENT ADOPTED BY COUNTY ENGINEER MAY 1965

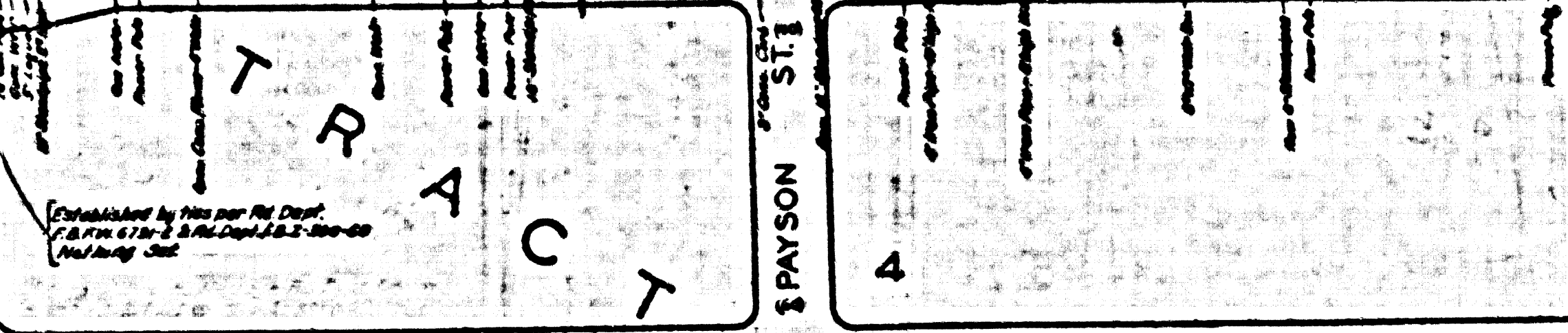


L. R. 138 - 51
SEE C.S.B-2933

CONTINUED ON C.S.B-1848-2

TRACT

ORMISTON
M. R. 33 - 72, 73



TRACT NO. 13991

M. B. 285

FOR TOPOGRAPHY

SEC. 1, T. 1 S., R. 10 W.

F. B. 632 - 147 - 155

FOR TOPOGRAPHY N. W. T.

TRACT NO. 1306

TRACT NO. 2246

TRACT NO.

16608

LOT A

M. B. 18 - 41

M. B. 29 - 12

M. B. 402 - 1, 2

CSB-1646-1

A3 OF A3