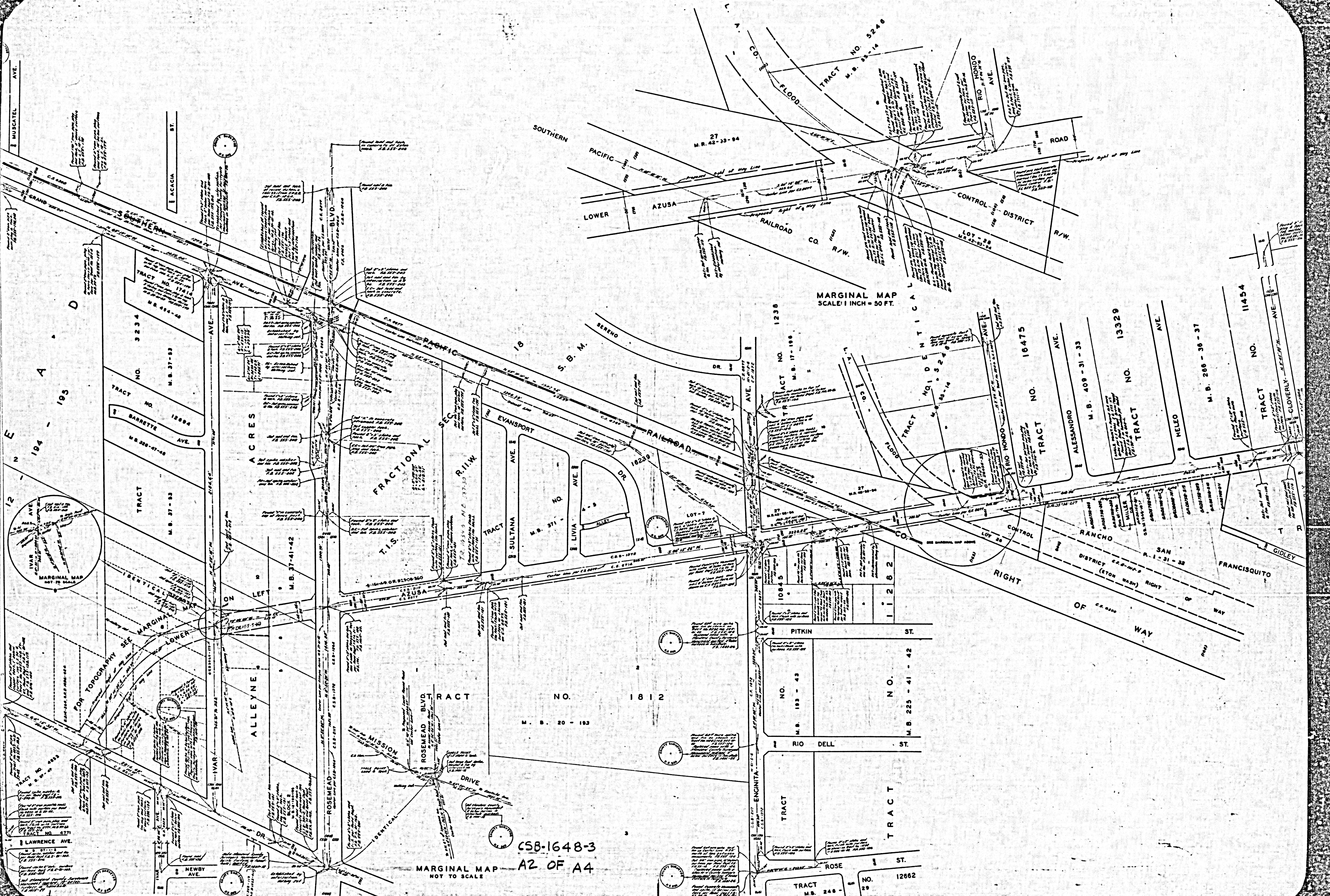


COUNTY OF LOS ANGELES  
MAP OF  
**LOWER AZUSA ROAD**  
FROM  
MAINE AVENUE  
TO  
MISSION DRIVE  
COUNTY SURVEYORS MAP NO. B-1648  
SHEET NO. 3 OF 3 SHEETS  
SCALE: 1 INCH = 100 FT.

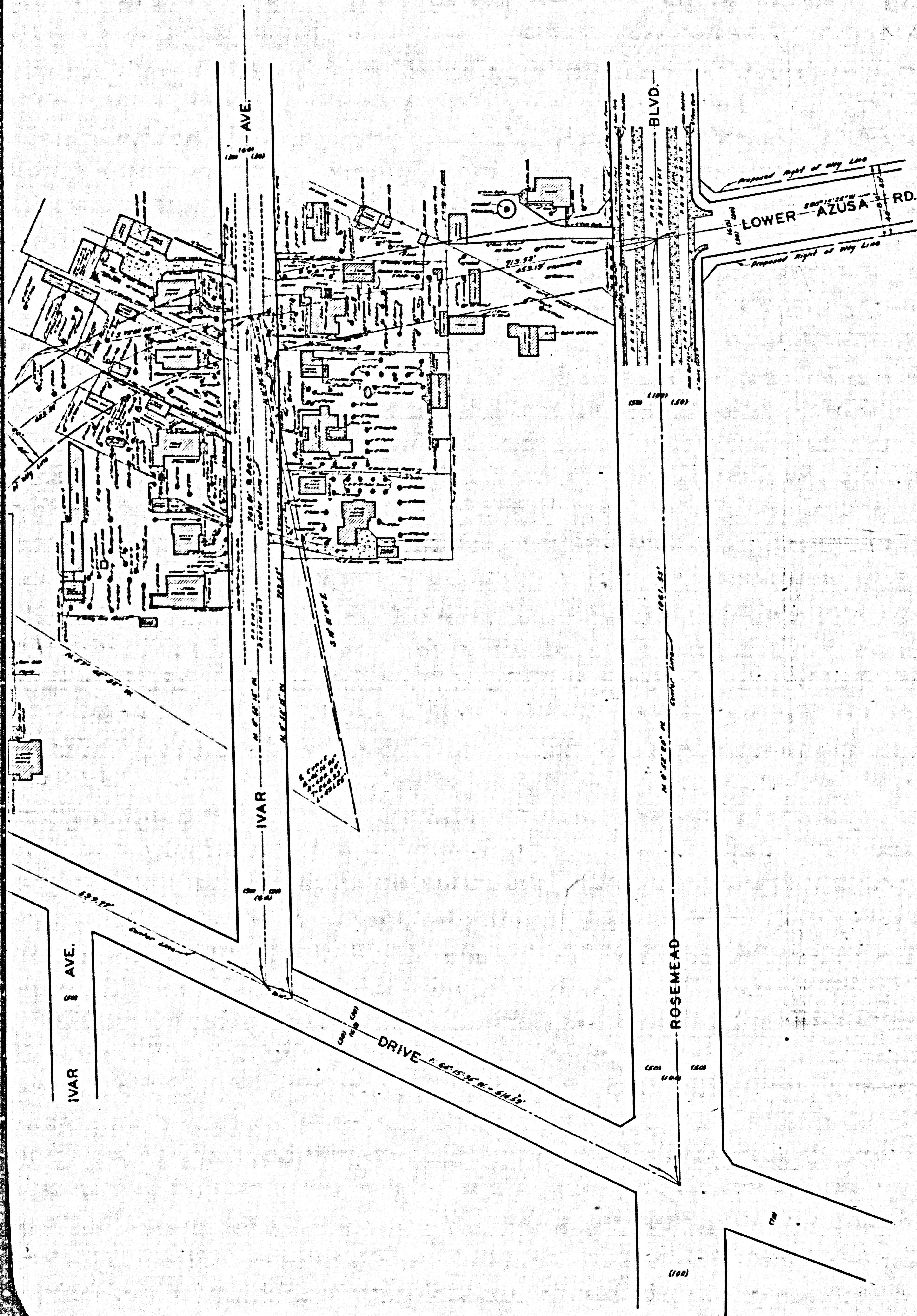
JOB NUMBER 0074.53  
WILLIAM J. FOX - COUNTY SURVEYOR  
SURVEYED APRIL, 1938 TO JANUARY, 1934  
SURVEYED UNDER INSTRUCTIONS OF THE  
BOARD OF SUPERVISORS PER ORDER DATED  
MARCH 21, 1932  
BEARINGS ARE BASED ON THE BEARING  
OF MAINE AVE. AS SHOWN ON C.S.B. 626-9  
F.B. 555-114-122-161-172. F.B. 616-227-246  
FIELD WORK BY.....W.A. MILLER  
D.E. HOLMES  
OFFICE WORK BY.....G.D. BAILEY  
CHECKED BY.....G.M. FINLEY

THIS MAP FILED MAY 1938  
JOHN A. LAMBIE - COUNTY ENGINEER

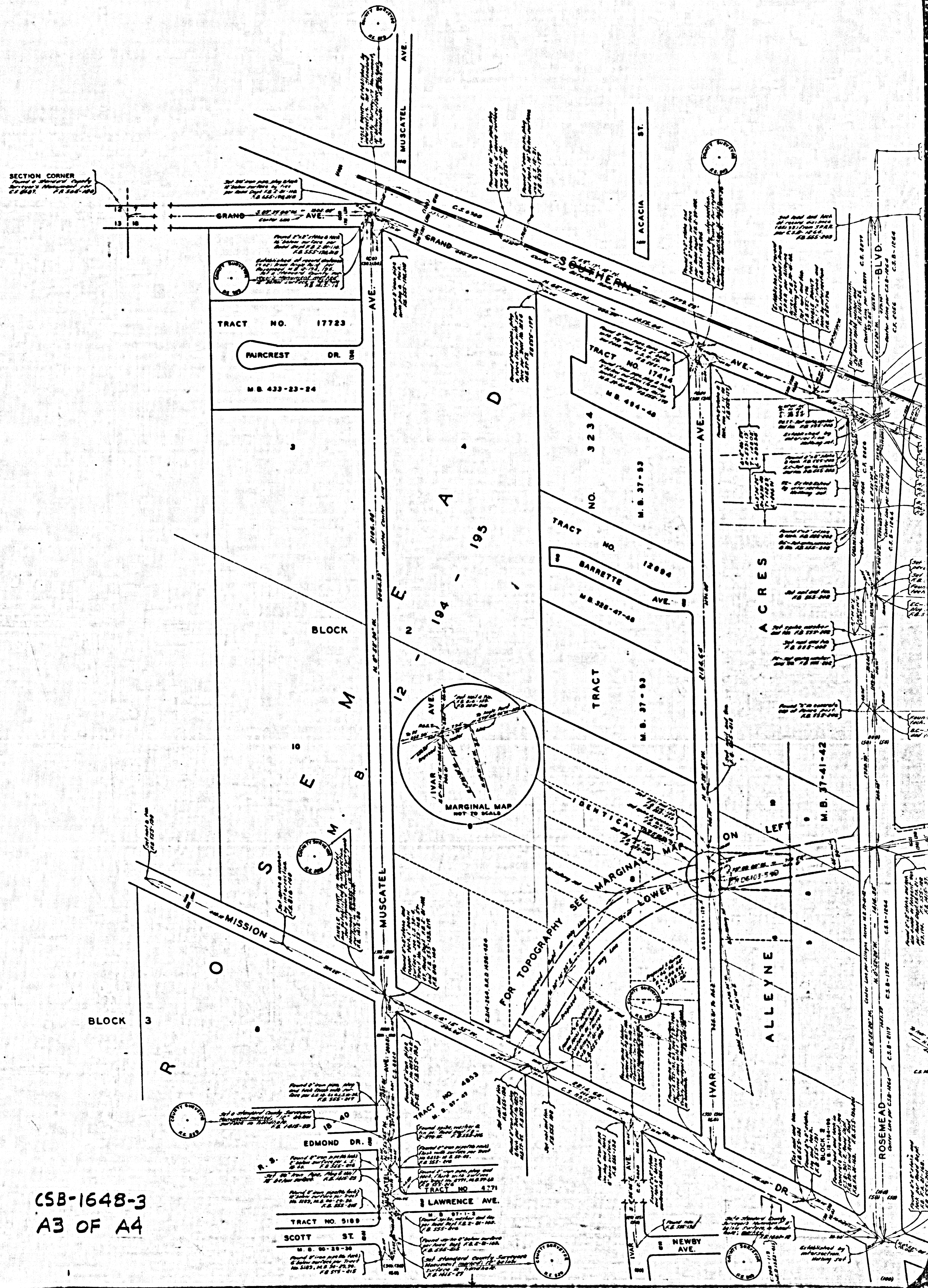
CSB-1648-3  
A1 OF A4



CSB-1648-3  
 MARGINAL MAP  
 NOT TO SCALE  
 A2 OF A4



MARGINAL MAP  
SHOWING  
TOPOGRAPHY  
SCALE: 1 INCH = 50 FT.  
FIELD WORK BY...D.E. HOLMES  
OFFICE WORK BY...G.D. BAILEY  
CHECKED BY...D.M. FINLEY  
J. AJA  
F.B. 816-227-246



CSB-1648-3  
A3 OF A4

