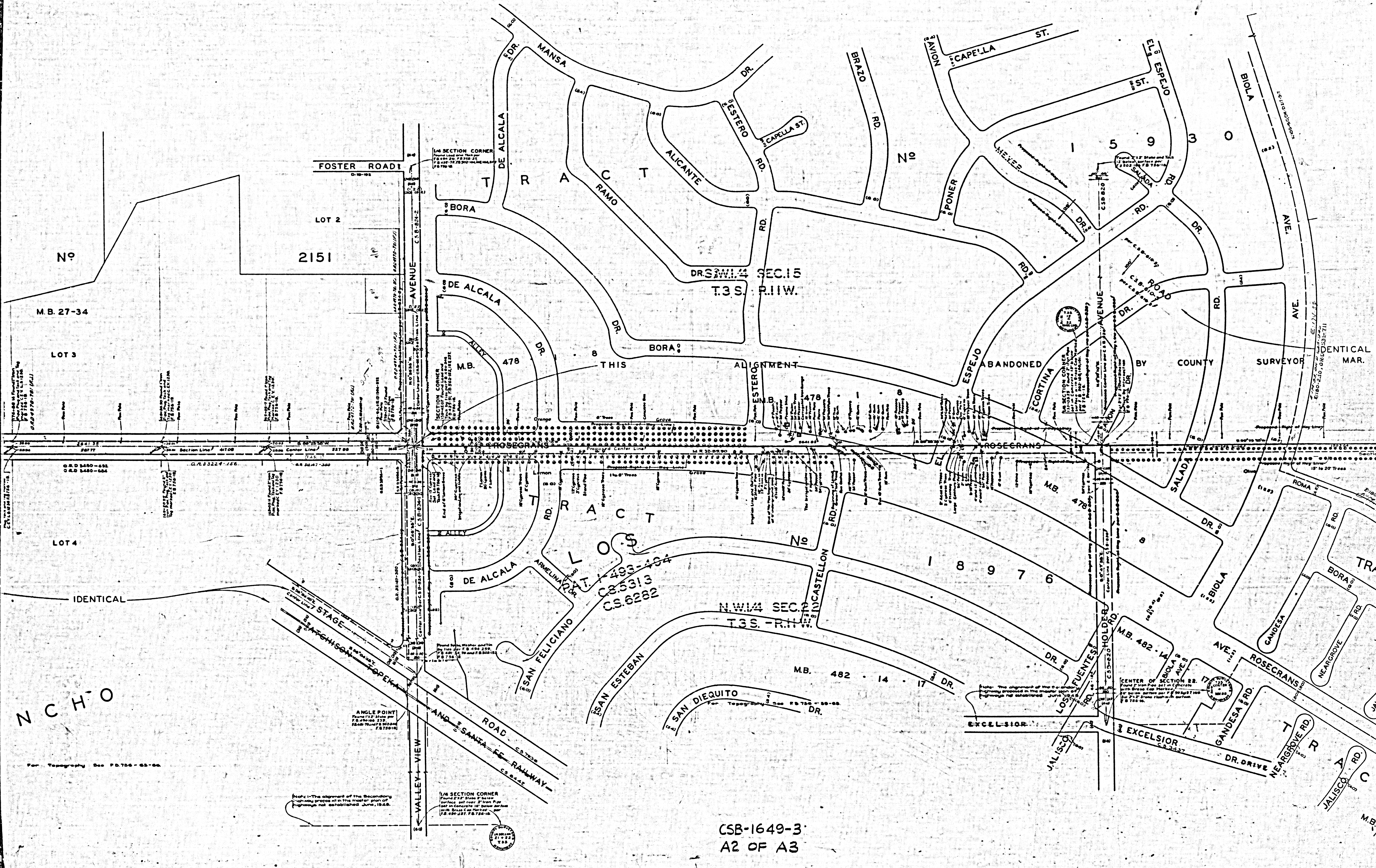


COUNTY OF LOS ANGELES
 MAP OF
ROSECRANS AVENUE
 FROM
 EASTERLY BOUNDARY LINE, LOS ANGELES COUNTY
 TO
FIGUEROA STREET
 COUNTY SURVEYORS MAP N^o B1649.
 SHEET N^o 3 OF 9 SHEETS
 SCALE: 1 INCH = 100 FT.

JOB NUMBER 8202
 ALFRED JONES-COUNTY SURVEYOR
 SURVEYED JUNE, 1936-DEC. 1940
 SURVEYED UNDER INSTRUCTIONS OF THE
 BOARD OF SUPERVISORS PER ORDER DATED
 OCTOBER 8, 1937
 BEARINGS ARE BASED ON THE CALIFORNIA COORDINATE
 SYSTEM ZONE 1, PER CHAPTER 1307, STATUTES 1947 SEE C.S. 9423
 F.B. 756 & 856
 FIELD WORK BY L.D. MOORE
 L.S. HAMMOND
 OFFICE WORK BY R.M. HALL
 CHECKED BY ANDREW
 THIS MAP FILED - JULY, 1946
 C.E. ARNOLD-COUNTY SURVEYOR
 Revised February, 1951 - R.W.M.A.
 Revised April 1953 - C.L.D.

CSB-1649-3
 A1 OF A3

INDEX A-33



FOSTER ROAD
C.S. 10-92

LOT 2
2151

M.B. 27-34

LOT 3

LOT 4

1/4 SECTION CORNER
Point 2 1/2' from 2" level
surface set near 2" level. Peg
set in concrete 1/2' below surface
with Brass Cap Marked
U.S. 498-497, F.B. 726-16

SECTION CORNER
Point 2 1/2' from 2" level
surface set near 2" level. Peg
set in concrete 1/2' below surface
with Brass Cap Marked
U.S. 498-497, F.B. 726-16

1/4 SECTION CORNER
Point 2 1/2' from 2" level
surface set near 2" level. Peg
set in concrete 1/2' below surface
with Brass Cap Marked
U.S. 498-497, F.B. 726-16

CENTER OF SECTION 22.
Found 2 1/2' from set in concrete
with Brass Cap Marked
U.S. 498-497, F.B. 726-16
with Brass Cap Marked
U.S. 498-497, F.B. 726-16

Note: 1-The alignment of the Secondary
highway shown in the master plan of
highway not established June, 1926.

1/8 SECTION CORNER
Point 2 1/2' from 2" level
surface set near 2" level. Peg
set in concrete 1/2' below surface
with Brass Cap Marked
U.S. 498-497, F.B. 726-16

CSB-1649-3
A2 OF A3

N C H O

For Topography See P.D. 756-63-66

IDENTICAL MAR.

IDENTICAL

ANGLE POINT
Point 2 1/2' from 2" level
surface set near 2" level. Peg
set in concrete 1/2' below surface
with Brass Cap Marked
U.S. 498-497, F.B. 726-16

Note: The alignment of the Secondary
highway shown in the master plan of
highway not established June, 1926.

1/8 SECTION CORNER
Point 2 1/2' from 2" level
surface set near 2" level. Peg
set in concrete 1/2' below surface
with Brass Cap Marked
U.S. 498-497, F.B. 726-16

CENTER OF SECTION 22.
Found 2 1/2' from set in concrete
with Brass Cap Marked
U.S. 498-497, F.B. 726-16
with Brass Cap Marked
U.S. 498-497, F.B. 726-16

CSB-1649-3
A2 OF A3

IDENTICAL MAR.

IDENTICAL

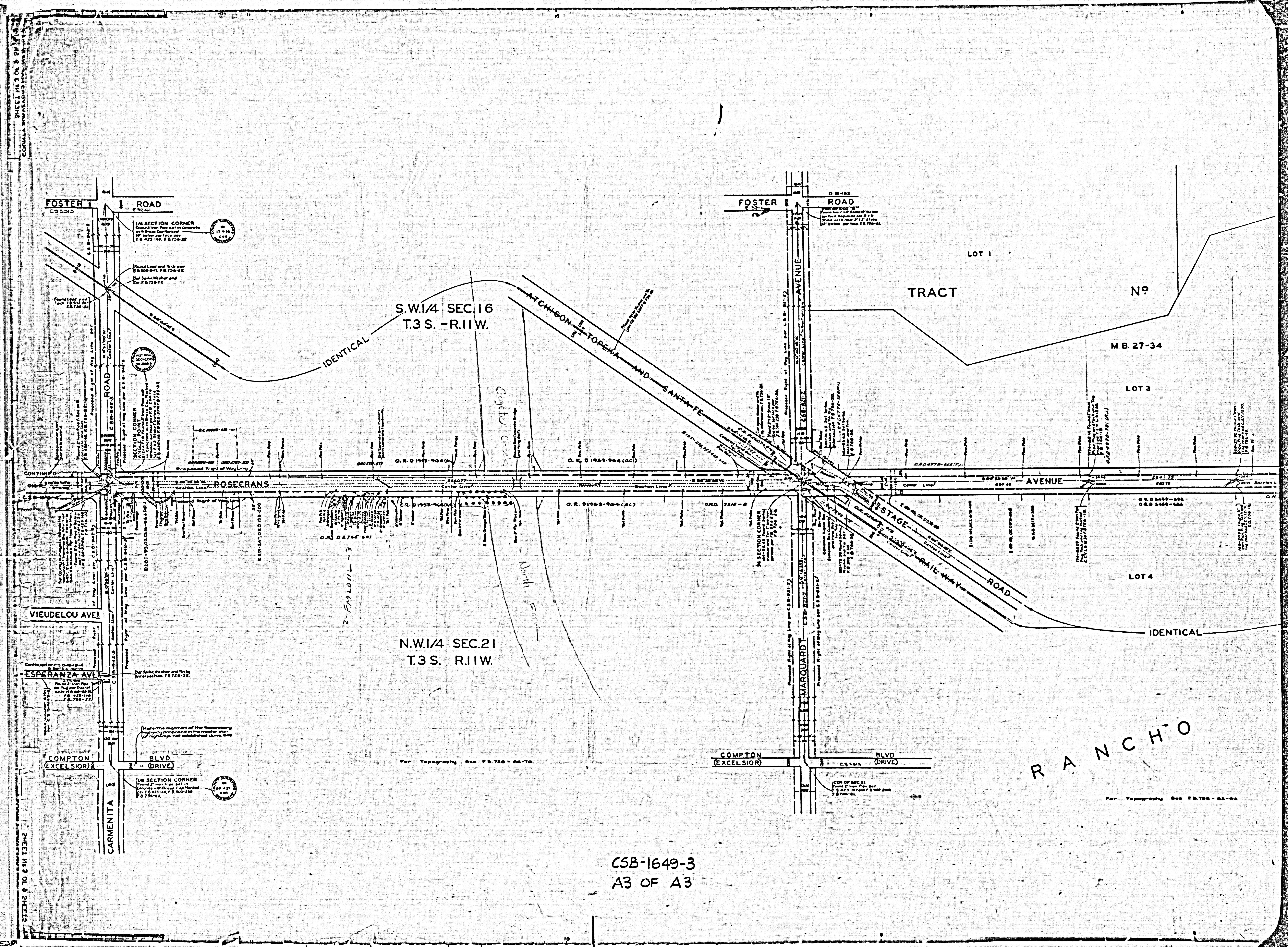
ANGLE POINT
Point 2 1/2' from 2" level
surface set near 2" level. Peg
set in concrete 1/2' below surface
with Brass Cap Marked
U.S. 498-497, F.B. 726-16

Note: The alignment of the Secondary
highway shown in the master plan of
highway not established June, 1926.

1/8 SECTION CORNER
Point 2 1/2' from 2" level
surface set near 2" level. Peg
set in concrete 1/2' below surface
with Brass Cap Marked
U.S. 498-497, F.B. 726-16

CENTER OF SECTION 22.
Found 2 1/2' from set in concrete
with Brass Cap Marked
U.S. 498-497, F.B. 726-16
with Brass Cap Marked
U.S. 498-497, F.B. 726-16

CSB-1649-3
A2 OF A3



S.W. 1/4 SEC. 16
T.3S. - R.11W.

N.W. 1/4 SEC. 21
T.3S. R.11W.

TRACT No

M.B. 27-34

LOT 3

LOT 4

RANCHO

CSB-1649-3
A3 OF A3