

COUNTY OF LOS ANGELES  
 MAP OF  
**ROSECRANS AVENUE**  
 FROM  
 EASTERLY BOUNDARY LINE, LOS ANGELES COUNTY  
 TO  
**FIGUEROA STREET**

COUNTY SURVEYORS MAP NO. B-1649.  
 SHEET NO. 5 OF 9 SHEETS  
 SCALE: 1 INCH = 100 FT.

JOB NUMBER 8202  
 ALFRED JONES-COUNTY SURVEYOR  
 SURVEYED JUNE, 1938-DEC. 1940.

SURVEYED UNDER INSTRUCTIONS OF THE  
 BOARD OF SUPERVISORS PER ORDER DATED  
 OCTOBER 5, 1937.  
 BEARINGS ARE BASED ON THE CALIFORNIA COORDINATE  
 SYSTEM, ZONE 2, PER CHAPTER 1007, STATUTES 1942, SEC. 5, 9423.

F.B. 756 & 856.  
 FIELD WORK BY.....L.D. MOORE  
 L.S. HAMMOND  
 OFFICE WORK BY.....H.M. HALL  
 DAWHITE  
 CHECKED BY.....A. HDREW 11/20/33

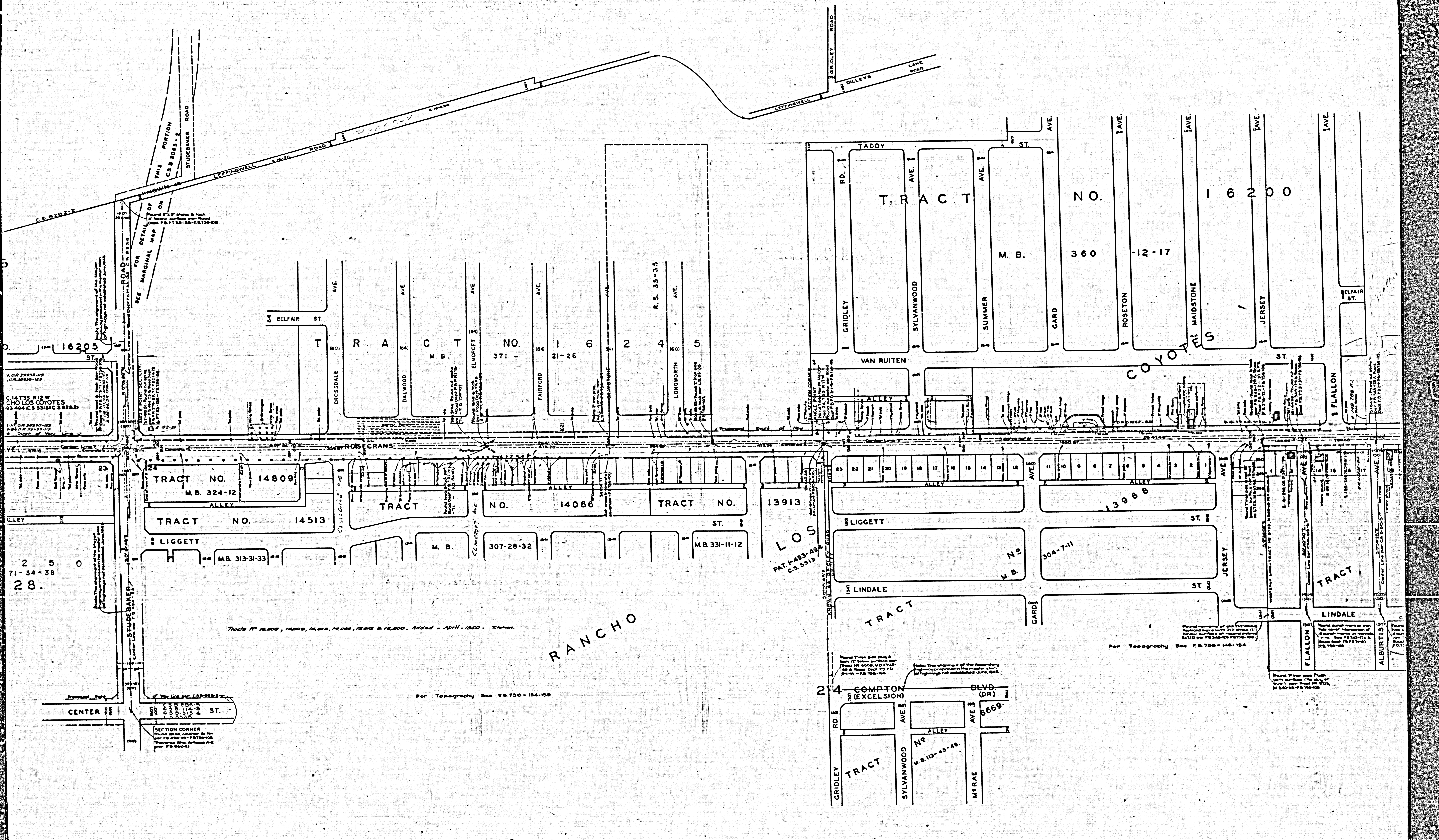
THIS MAP FILED - JULY, 1948.  
 C.E. ARNOLD-COUNTY SURVEYOR

Revised as indicated April 1950.

CSB-1649-5  
 A1 OF A4

SHEET NO. 5 OF 9 SHEETS  
 COUNTY OF LOS ANGELES

SHEET NO. 5 OF 9 SHEETS  
 COUNTY OF LOS ANGELES



C. 14735 R12 W  
C/O LOS COYOTES  
93 204 C.S. 5312 C.S. 6282

2 5 0  
71-34-38  
28.

Tracts 14, 14008, 14009, 14, 010, 14, 009, 14, 010, 14, 009, 14, 010, 14, 009. Added - April - 1920 - T. H. H. H.

RANCHO

For Topography See F.B. 750-154-159

For Topography See F.B. 750-148-154

Found from page 6  
Book 17 of the Survey  
of the City of Los Angeles  
Vol. 10, Page 105-106  
1911-12 - F.B. 750-104

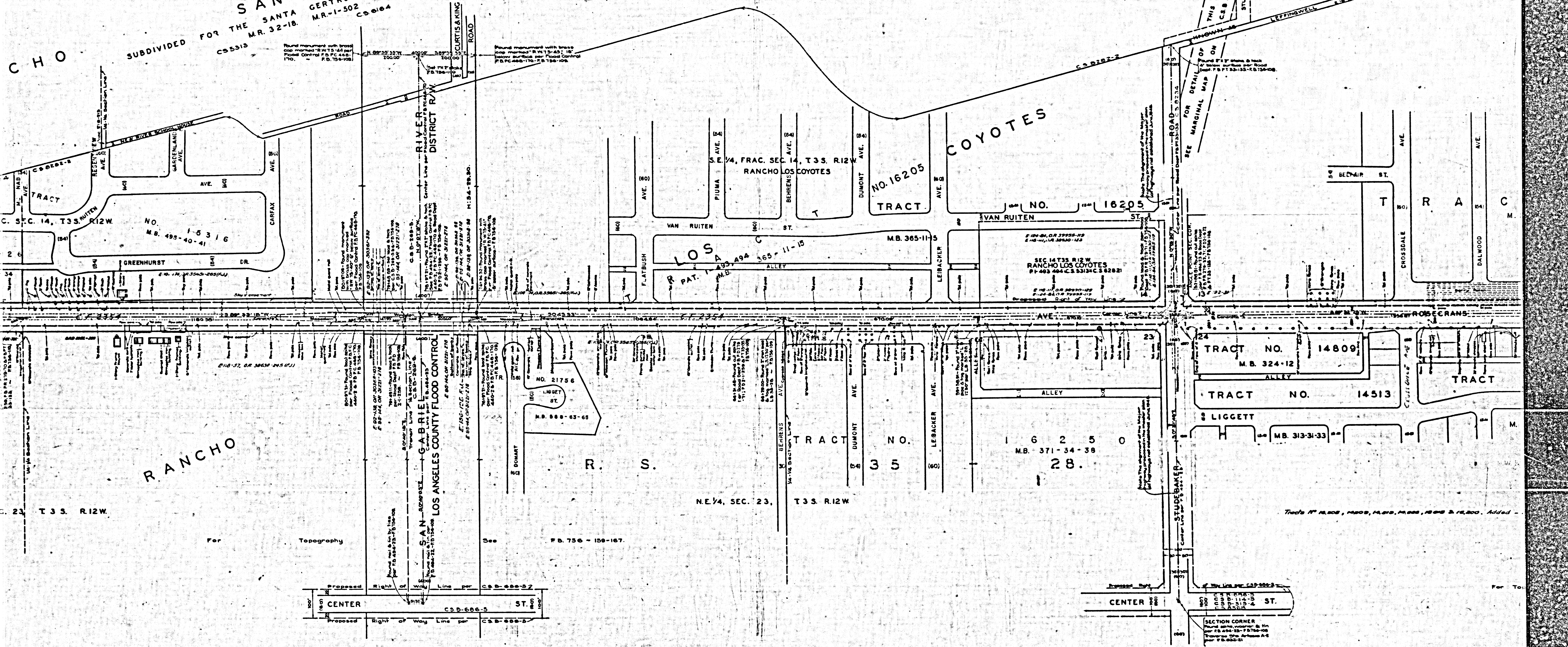
Note: The alignment of the boundary  
between the City of Los Angeles  
and the County of Los Angeles  
is shown by the line  
of the survey of June, 1914.

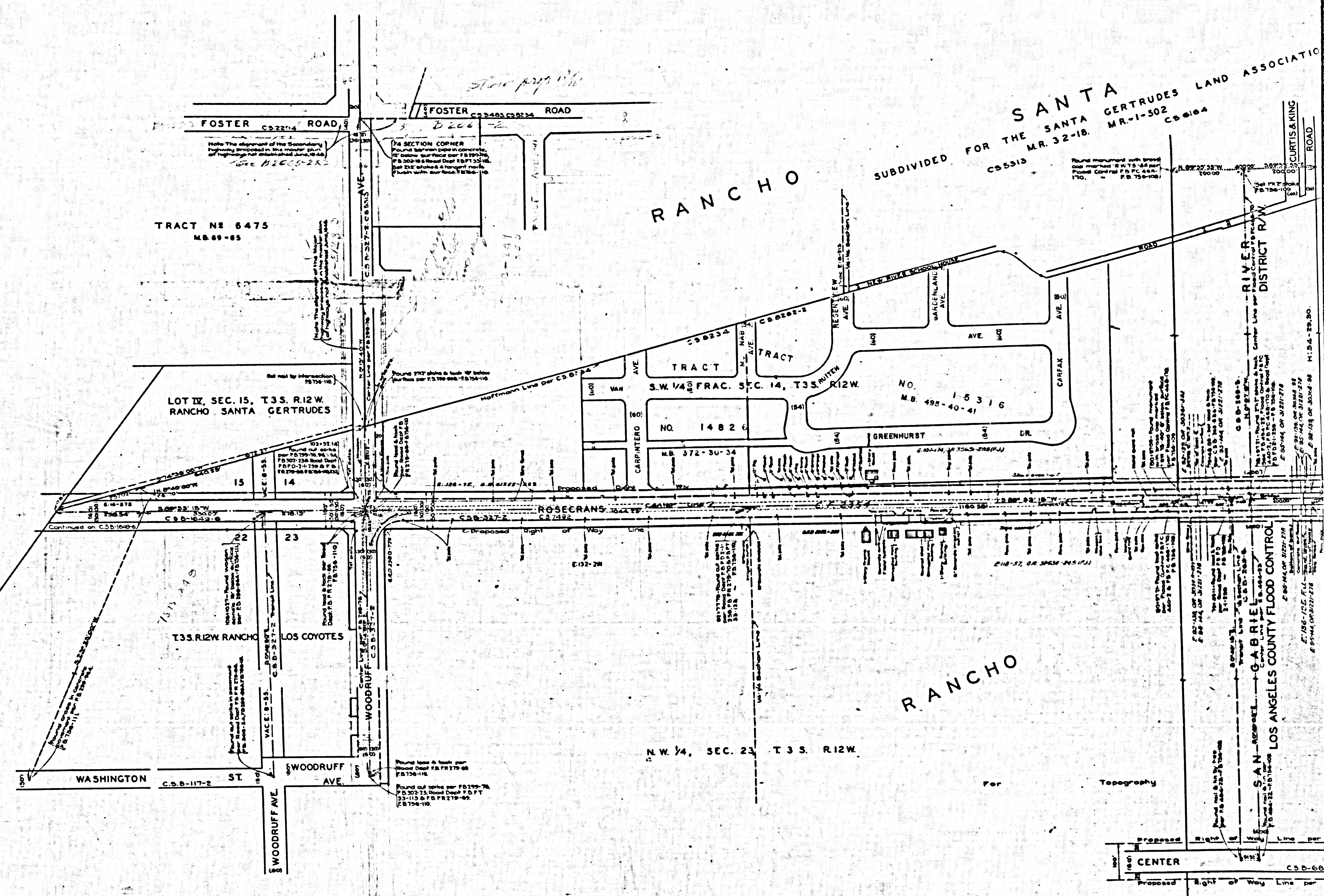
Found from page 10  
Book 17 of the Survey  
of the City of Los Angeles  
Vol. 10, Page 105-106  
1911-12 - F.B. 750-104

CSB-1649-5  
A2 OF A4

# GERTRUDES

CHO  
SUBDIVIDED FOR THE SANTA GERTRUDES LAND ASSOCIATION  
MR. 32-18. C55513 C50164





SANTA GERTRUDES LAND ASSOCIATION  
 SUBDIVIDED FOR THE M.R. 32-1B. MR-1-502  
 CS 5513

TRACT NO. 6475  
 M.B. 60-85

LOT IX, SEC. 15, T3S, R12W  
 RANCHO SANTA GERTRUDES

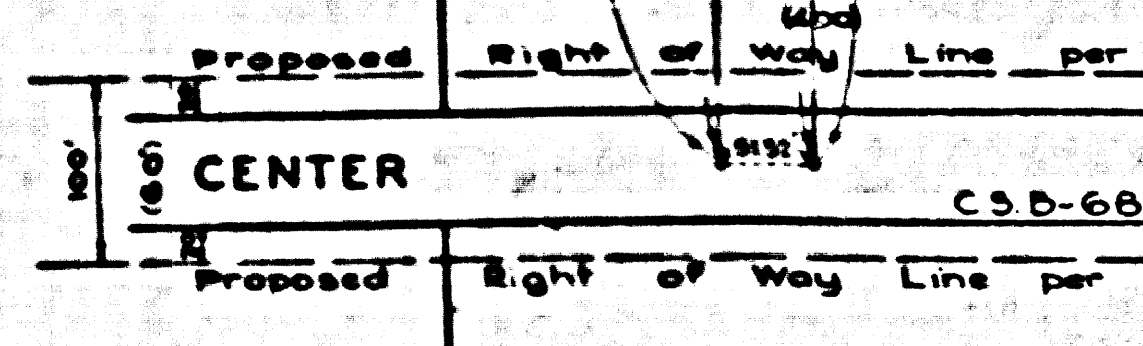
TRACT NO. 14826  
 S.W. 1/4 SEC. 14, T3S, R12W

TRACT NO. 15316  
 M.B. 495-40-41

T3S, R12W RANCHO LOS COYOTES

N.W. 1/4, SEC. 23, T3S, R12W

CSB-1649-5  
 A4 OF A4



LOS ANGELES COUNTY FLOOD CONTROL  
 GABRIEL  
 SAN MARCO