

COUNTY OF LOS ANGELES
 MAP OF
ROSECRANS AVENUE
 FROM
 EASTERLY BOUNDARY LINE, LOS ANGELES COUNTY
 TO
 FIGUEROA STREET

COUNTY SURVEYORS MAP NO B-1649.
 SHEET NO 8 OF 9 SHEETS
 SCALE: 1 INCH = 100 FT.

JOB NUMBER 8202

ALFRED JONES COUNTY SURVEYOR
 SURVEYED JUNE, 1938-DEC., 1940.

SURVEYED UNDER INSTRUCTIONS OF THE
 BOARD OF SUPERVISORS PER ORDER DATED
 OCTOBER 9, 1937.

BEARINGS ARE BASED ON THE CALIFORNIA COORDINATE
 SYSTEM, ZONE 7, PER CHAPTER 1307, STATUTES 1947, SEC. C.S. 9423

F.B. 756 & 858.

FIELD WORK BY L.S. HAMMOND
 OFFICE WORK BY G. B. WHITE
 CHECKED BY A. ANDREW

THIS MAP FILED - JULY, 1948
 C.E. ARNOLD - COUNTY SURVEYOR

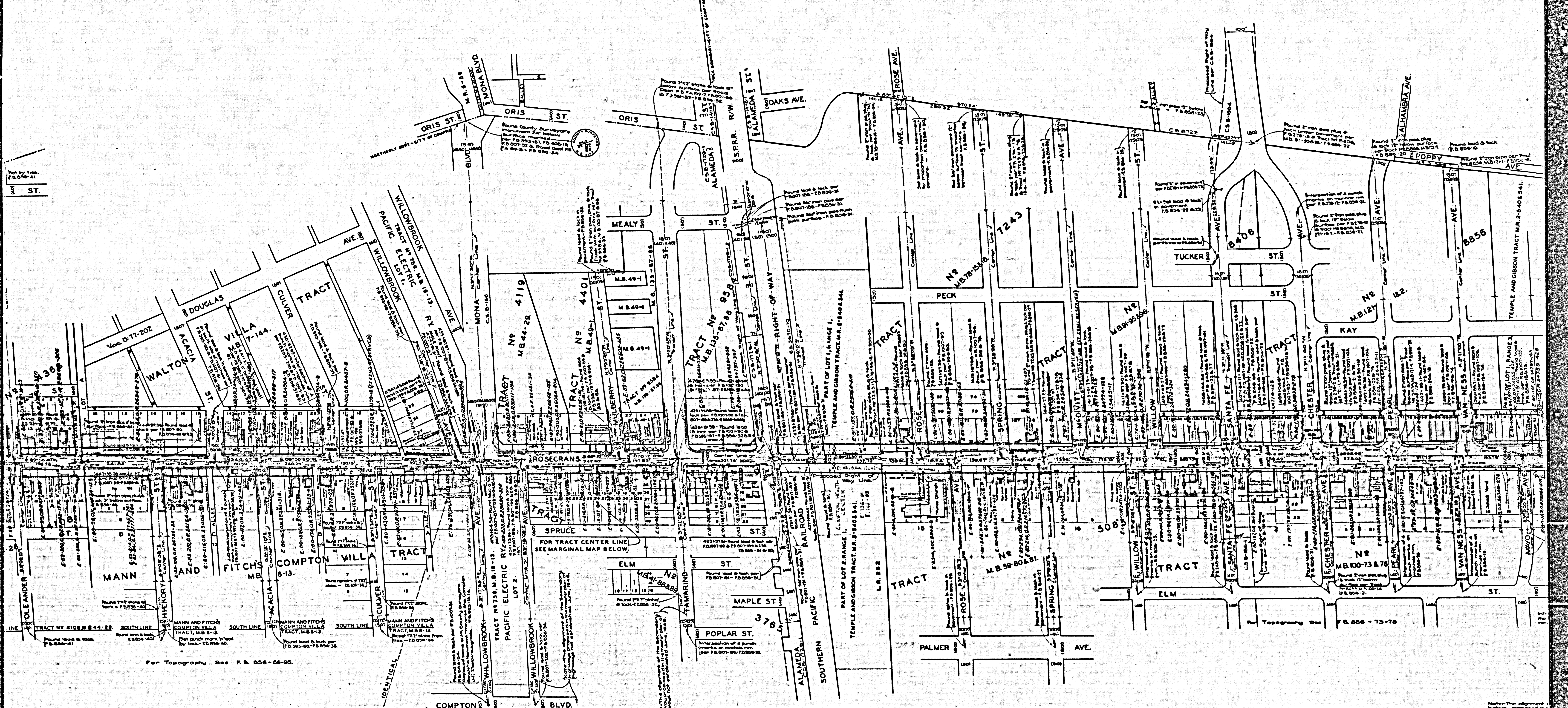
INDEX - 26-30

Note: - The alignment of the Secondary
 highway proposed in the master plan of
 highway not established June 1, 1948.

CSB-1649-8
 A1 OF A3

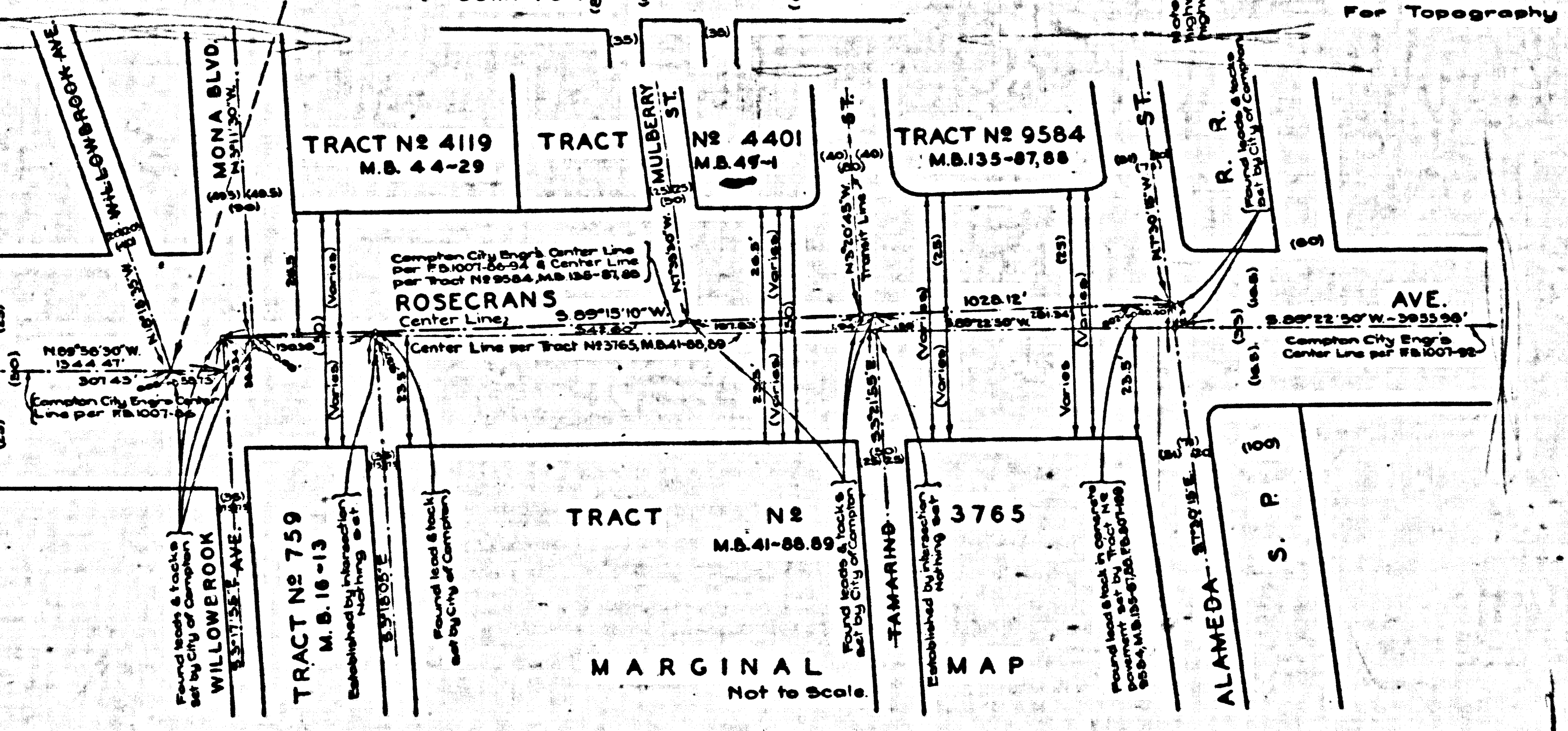
SHEET 8 OF 9 SHEETS
 COUNTY SURVEYORS MAP NO B-1649

SHEET 8 OF 9 SHEETS
 COUNTY SURVEYORS MAP NO B-1649



For Topography See F.B. 656-66-95.

For Topography See F.B. 656-75-88.



CSB-1649-8
A2 OF A3

