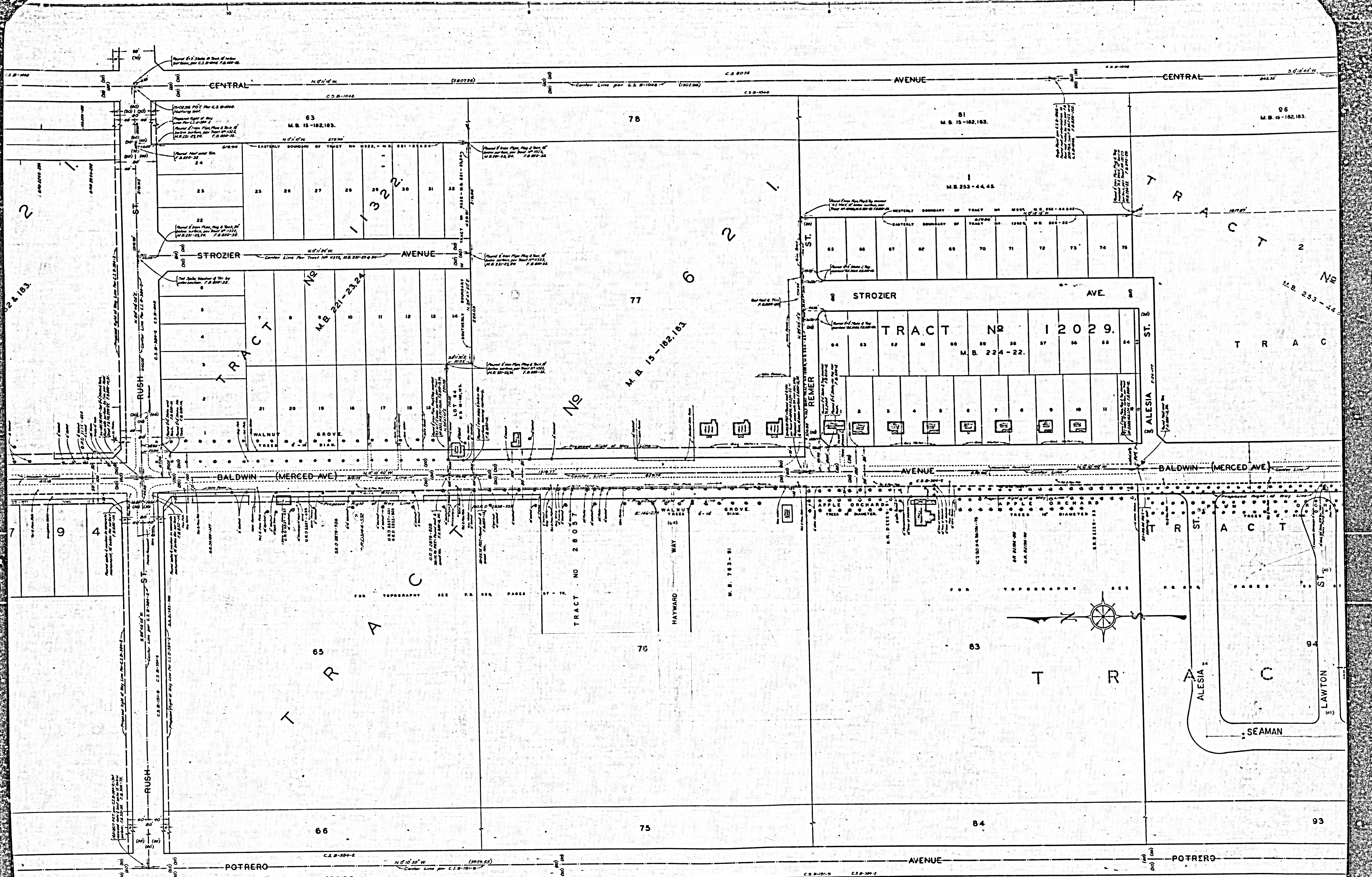


COUNTY OF LOS ANGELES.
 MAP OF
BALDWIN AVENUE
 FROM
PECK ROAD
 TO
RAMONA BOULEVARD
 COUNTY SURVEYORS MAP No B-1650
 SHEET No 1 OF 2 SHEETS.
 SCALE - 1 INCH = 50 FEET.

JOB NUMBER 8203.
 ALFRED JONES - COUNTY SURVEYOR.
 SURVEYED, OCT. 1940 - SEPT. 1942
 SURVEYED UNDER INSTRUCTIONS OF THE
 BOARD OF SUPERVISORS PER ORDER DATED
 OCTOBER 6, 1937.
 BEARINGS ARE BASED ON THE BEARING OF
 BALDWIN AVENUE PER C.S. B-111-3.
 F. B. 850-3-102
 FIELD WORK BY WAMLLER
 OFFICE WORK BY J. D. PRICE
 CHECKED BY A. A. ROESER
 INDEX 37

CSB-1650-1
 A1 OF A4



2 & 183

7

66

TRACT NO 11322
63
M.B. 15-182,183.
23 24 25 26 27 28 29 30 31 32

TRACT NO 221-23,24
6
11 12 13 14 15 16 17 18 19 20 21

TRACT NO 15-182,183
77
6
78

TRACT NO 12029
M.B. 224-22.
54 55 56 57 58 59 60 61 62 63 64

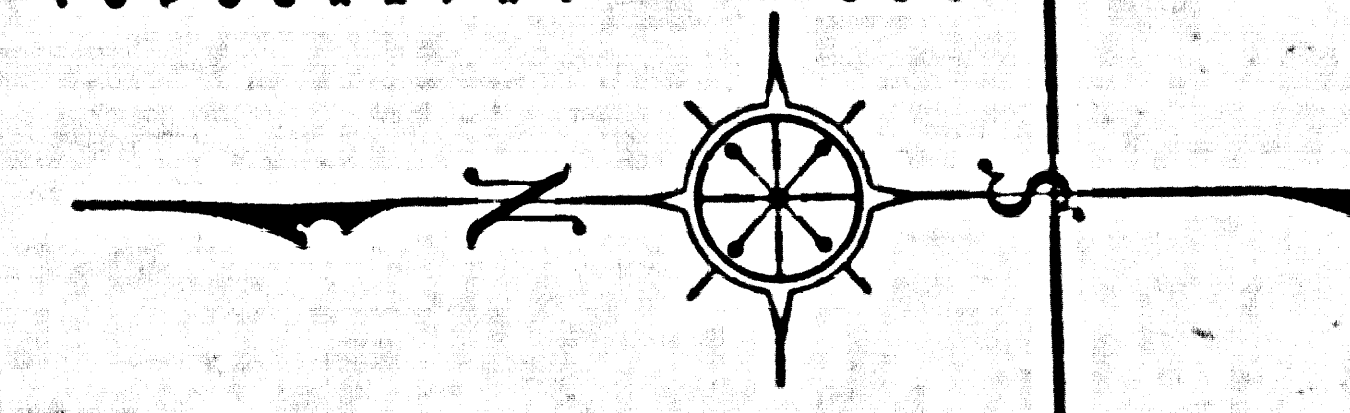
TRACT NO 253-44,45
81
M.B. 15-182,183.
96
M.B. 15-182,183.
65 66 67 68 69 70 71 72 73 74 75

TRACT NO 28057
65
66
75

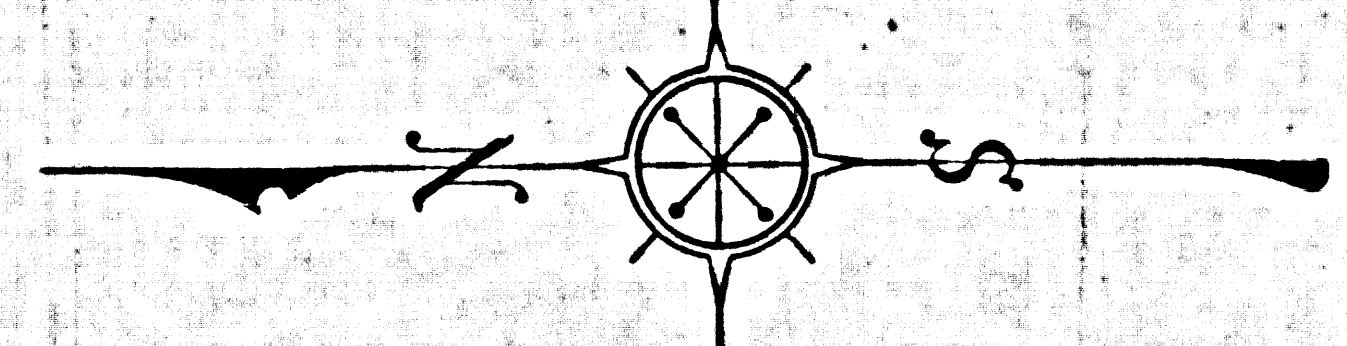
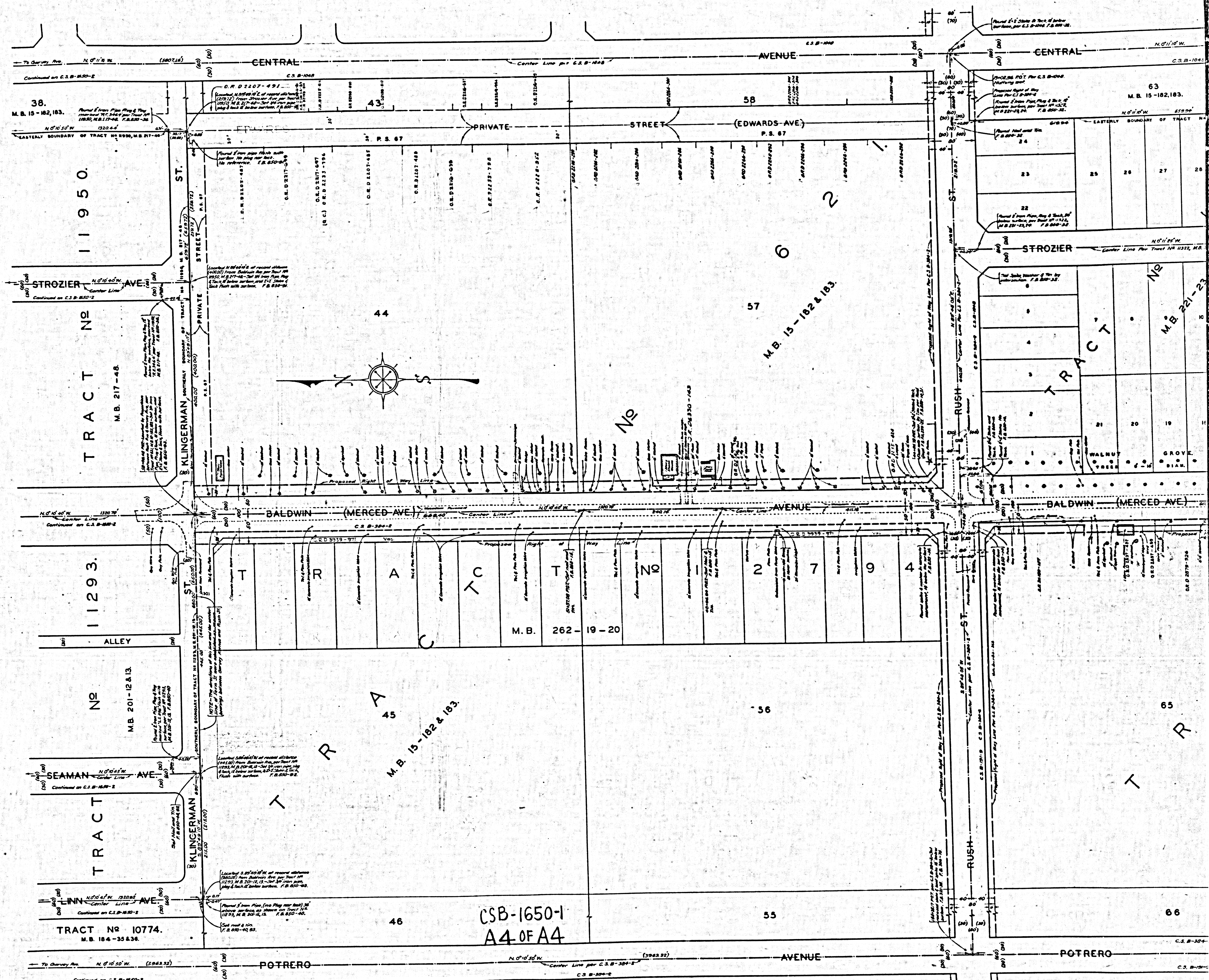
TRACT NO 15-182,183
75
75

TRACT NO 12029
83
84

TRACT NO 253-44,45
94
93



CSB-1650-1
A3 OF A4



38.
M.B. 15-182, 183.
N 0° 10' 50" W
Center Line
Continued on C.S.B. 1650-2

TRACT No 11950.
M.B. 217-48.
N 0° 10' 50" W
Center Line
Continued on C.S.B. 1650-2

TRACT No 11293.
ALLEY
M.B. 201-12 & 13.
N 0° 10' 50" W
Center Line
Continued on C.S.B. 1650-2

TRACT No 10774.
M.B. 184-35 & 36.
N 0° 10' 50" W
Center Line
Continued on C.S.B. 1650-2

To Quarry Ave. N 0° 10' 50" W. (2963.32)
Center Line per C.S.B. 304-2
Continued on C.S.B. 1650-2

43
C.S.B. 1060
N 0° 10' 50" W
Center Line per C.S.B. 1650-2

Private Street (Edwards Ave)
P.S. 67
N 0° 10' 50" W
Center Line per C.S.B. 1650-2

Baldwin (Merced Ave)
N 0° 10' 50" W
Center Line
Continued on C.S.B. 1650-2

TRACT No 11950.
M.B. 201-12 & 13.
N 0° 10' 50" W
Center Line
Continued on C.S.B. 1650-2

TRACT No 10774.
M.B. 184-35 & 36.
N 0° 10' 50" W
Center Line
Continued on C.S.B. 1650-2

To Quarry Ave. N 0° 10' 50" W. (2963.32)
Center Line per C.S.B. 304-2
Continued on C.S.B. 1650-2

58
C.S.B. 1060
N 0° 10' 50" W
Center Line per C.S.B. 1650-2

TRACT No 11950.
M.B. 217-48.
N 0° 10' 50" W
Center Line
Continued on C.S.B. 1650-2

TRACT No 11293.
ALLEY
M.B. 201-12 & 13.
N 0° 10' 50" W
Center Line
Continued on C.S.B. 1650-2

TRACT No 10774.
M.B. 184-35 & 36.
N 0° 10' 50" W
Center Line
Continued on C.S.B. 1650-2

To Quarry Ave. N 0° 10' 50" W. (2963.32)
Center Line per C.S.B. 304-2
Continued on C.S.B. 1650-2

TRACT No 11950.
M.B. 201-12 & 13.
N 0° 10' 50" W
Center Line
Continued on C.S.B. 1650-2

TRACT No 10774.
M.B. 184-35 & 36.
N 0° 10' 50" W
Center Line
Continued on C.S.B. 1650-2

To Quarry Ave. N 0° 10' 50" W. (2963.32)
Center Line per C.S.B. 304-2
Continued on C.S.B. 1650-2

To Quarry Ave. N 0° 10' 50" W. (2963.32)
Center Line per C.S.B. 304-2
Continued on C.S.B. 1650-2

CSB-1650-1
A4 OF A4