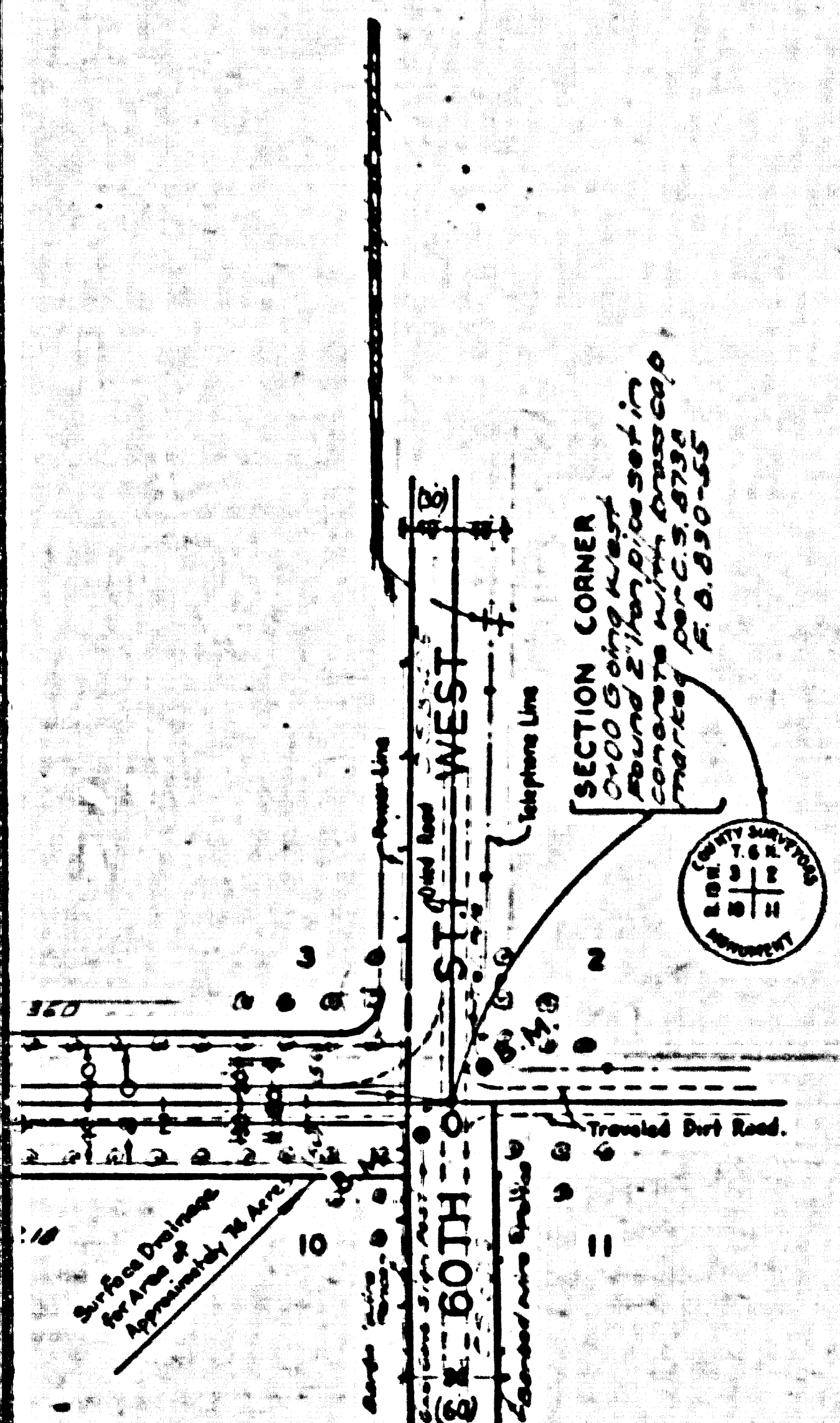
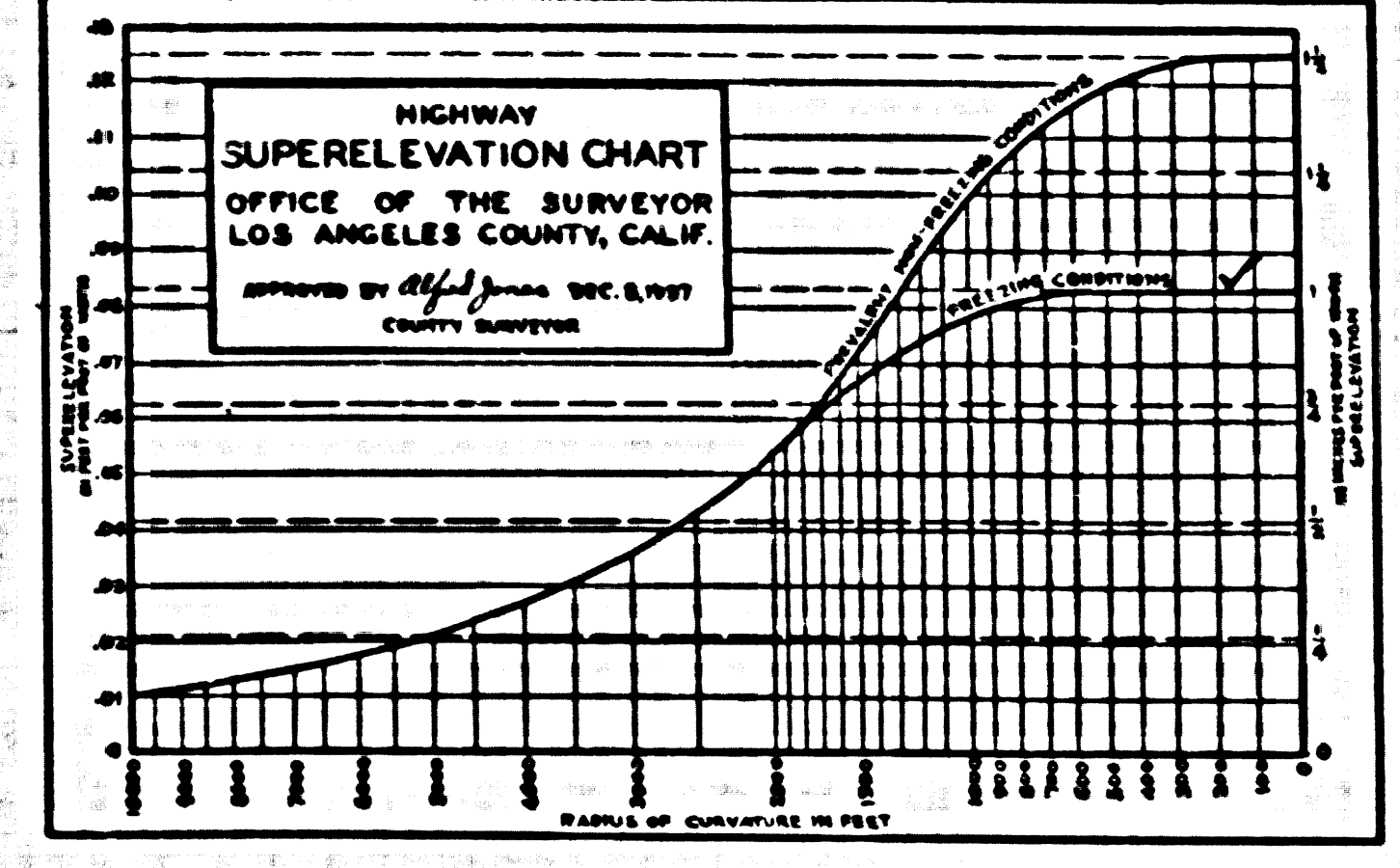
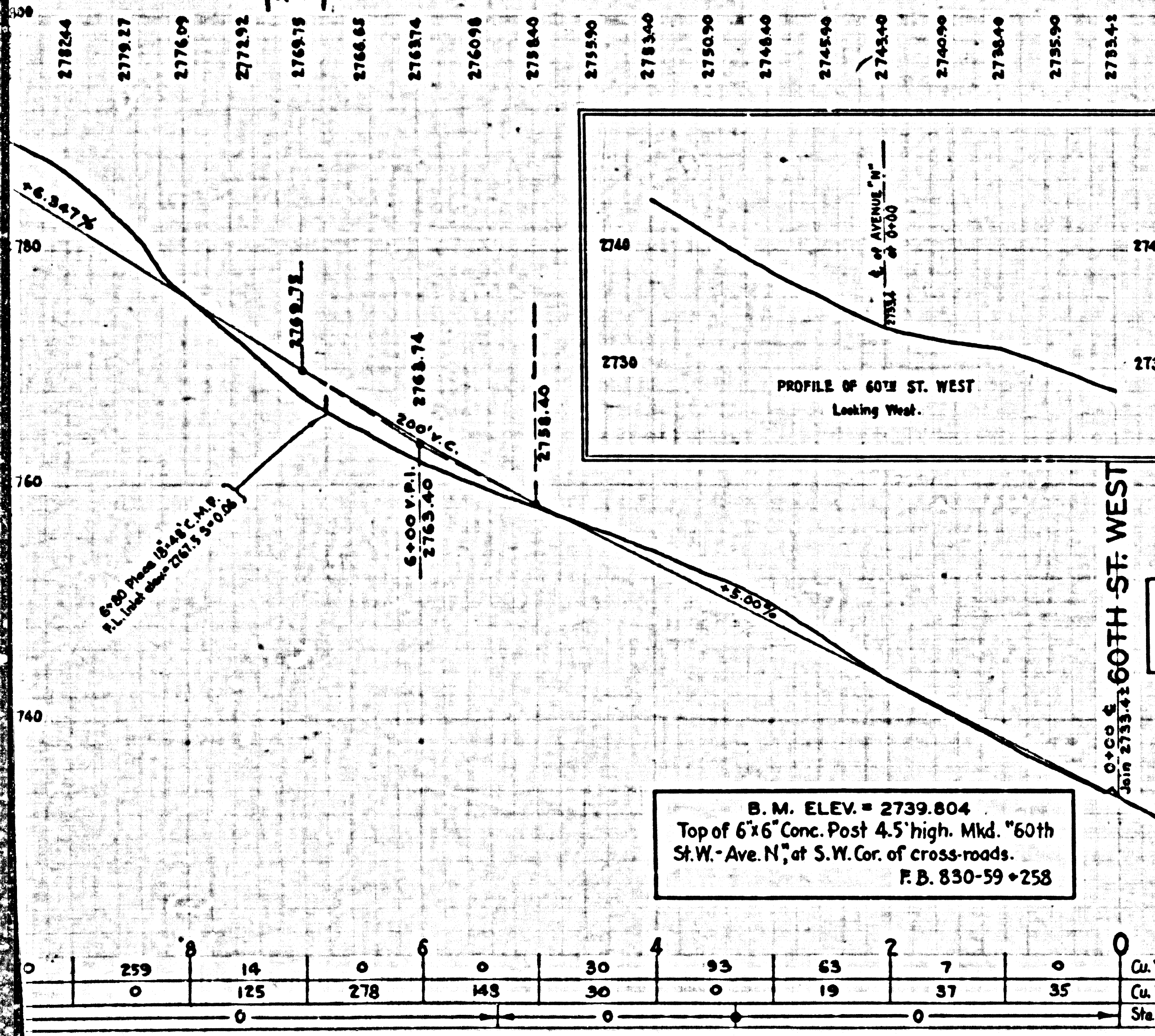
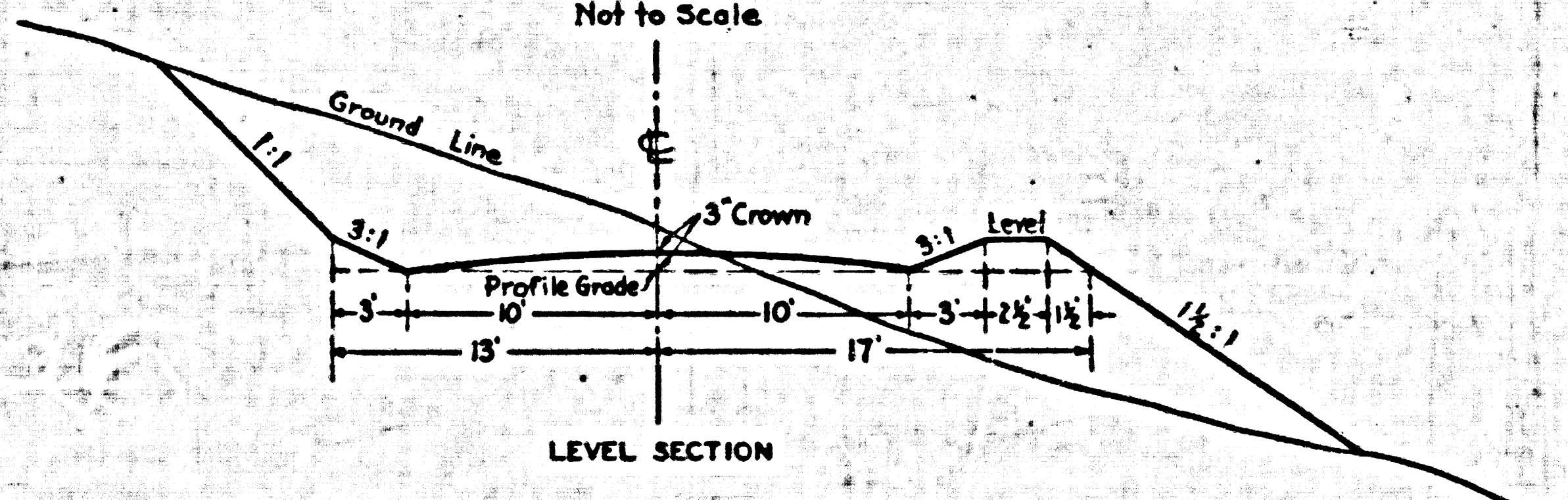


SHEET 161 TO 194 THREE



TYPICAL CROSS SECTION



COUNTY OF LOS ANGELES
ALIGNMENT
PLAN AND PROFILE OF
AVENUE "N"
FROM
60th ST. WEST
TO
70th ST. WEST

COUNTY SURVEYORS MAP No B-1702
SHEET 1 OF 2 SHEETS
SCALES - AS SHOWN
JOB No 5058
ALFRED JONES - COUNTY SURVEYOR
SURVEYED NOV. 1940 - APRIL 1941
SURVEYED UPON REQUEST OF THE ROAD
COMMISSIONER UNDER RULE 21, ORD. 929
F. B. 830 - 51-97, 257 - 292 /

FIELD WORK BY E. A. ROSECRANS
OFFICE WORK BY A. E. JIMMONS
CHECKED BY A. W. VAN FLEET
J. H. SMITH
H. N. BRADSTREET

ALIGNMENT DATA ADDED TO THIS MAP JULY 1944 BY C.W. COX
FOR CROSS SECTIONS SEE C. S. B-1702 SHEET 2

DATUM
ELEVATIONS SHOWN HEREON ARE BASED ON THE
1928 U.S.C.G.S. ADJUSTMENT OF U.S.G.S.-T.B.M. NEAR
QUARTER CORNER BETWEEN SECTIONS 2&11, T.6 N., R.13 W.
(U.S. 1636)

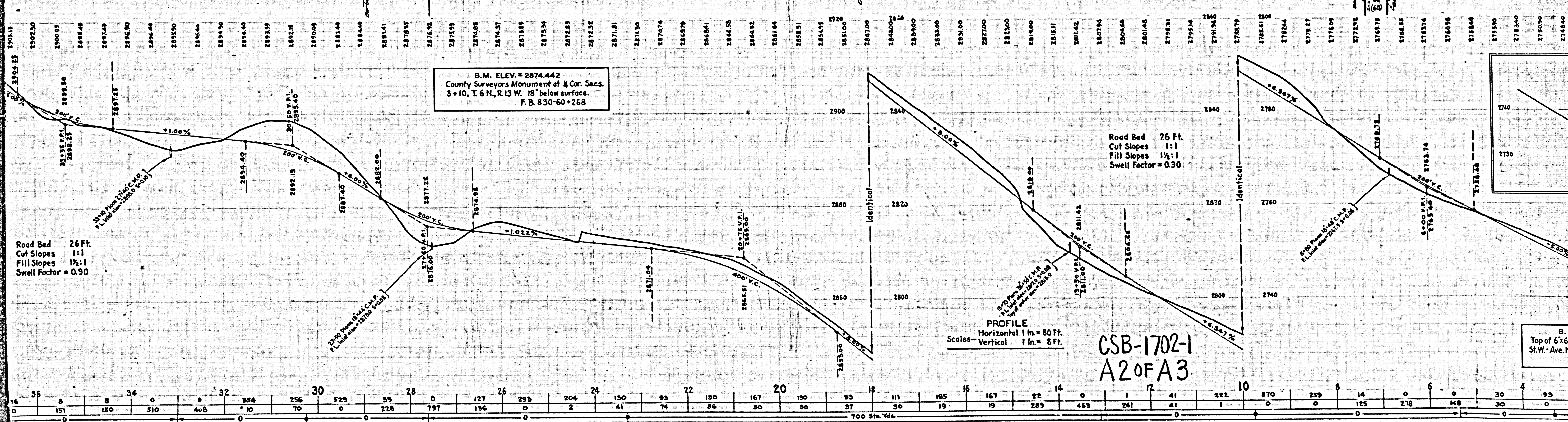
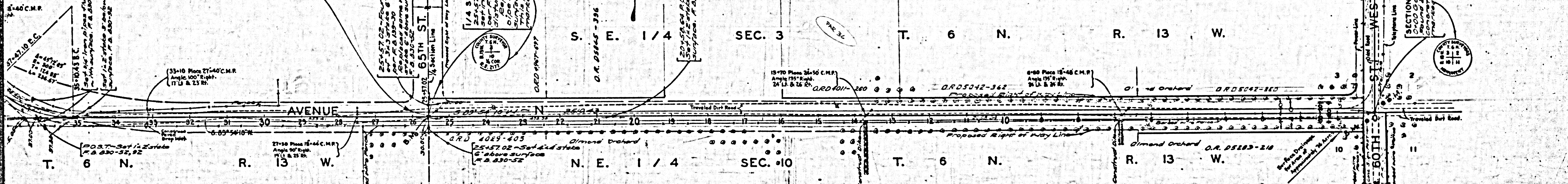
INDEX 64

Alignment of Parker Pass Rd. (Formerly Avenue N) between 60th Street West
& 70th Street West observed June 1938. See C.S.B-5342 for new alignment.
Revised June 1938 by J.F.M.

CSB-1702-1
A1 OF A3

COUNTY SURVEYORS MAP No B-1702

ABANDONED BY COUNTY ENGINEER JUNE 1978
SEE C.S.B-5342

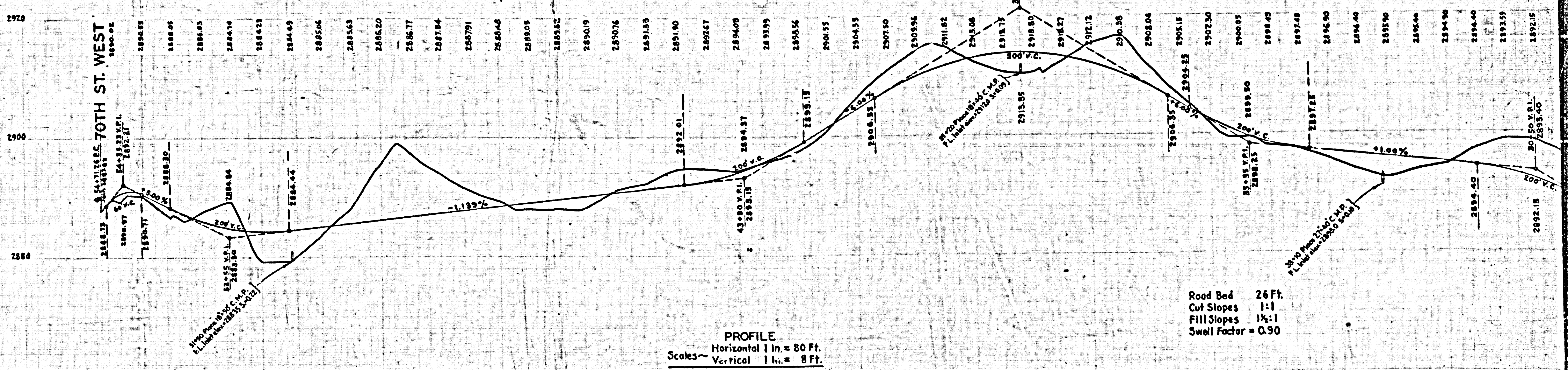
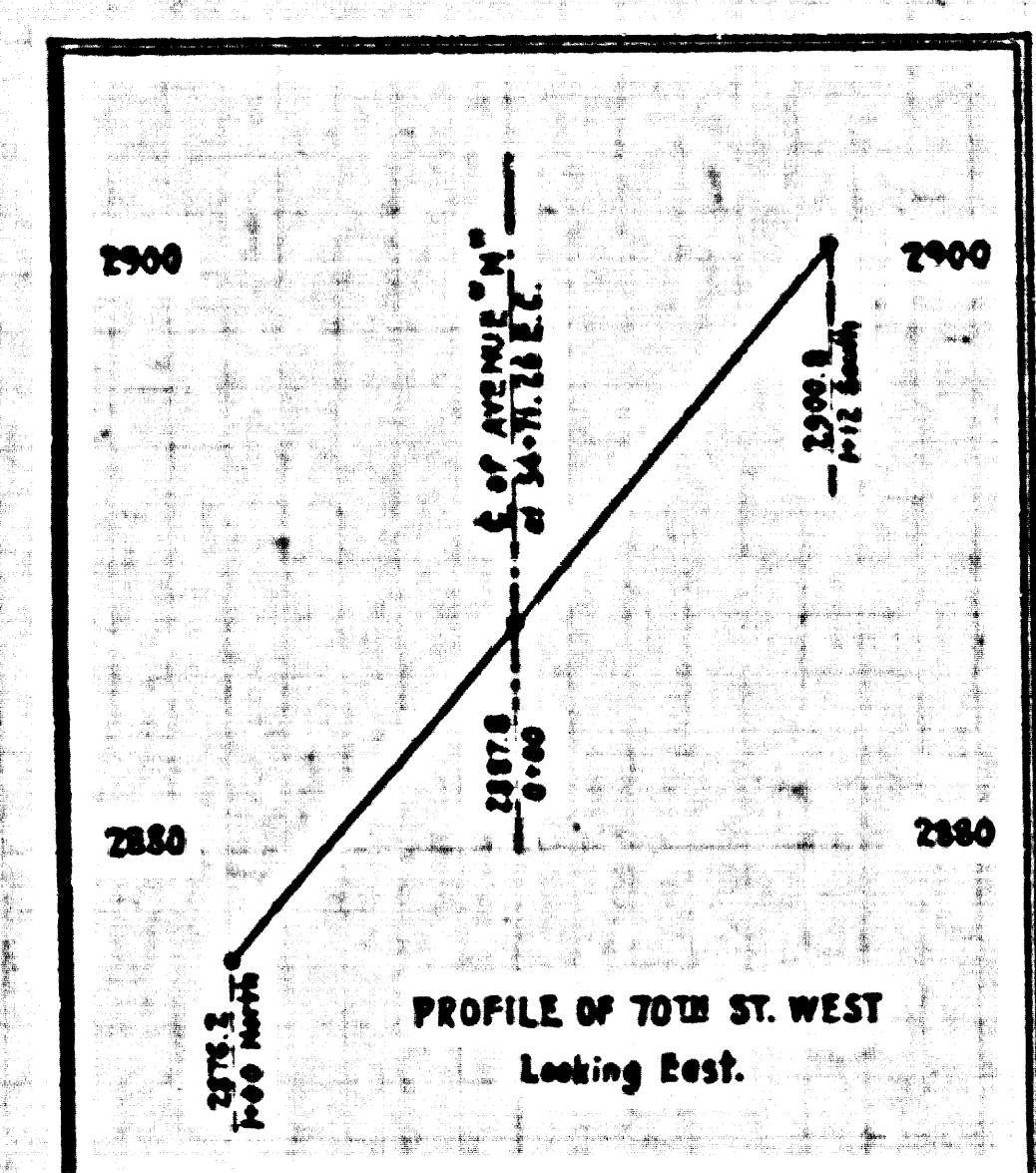
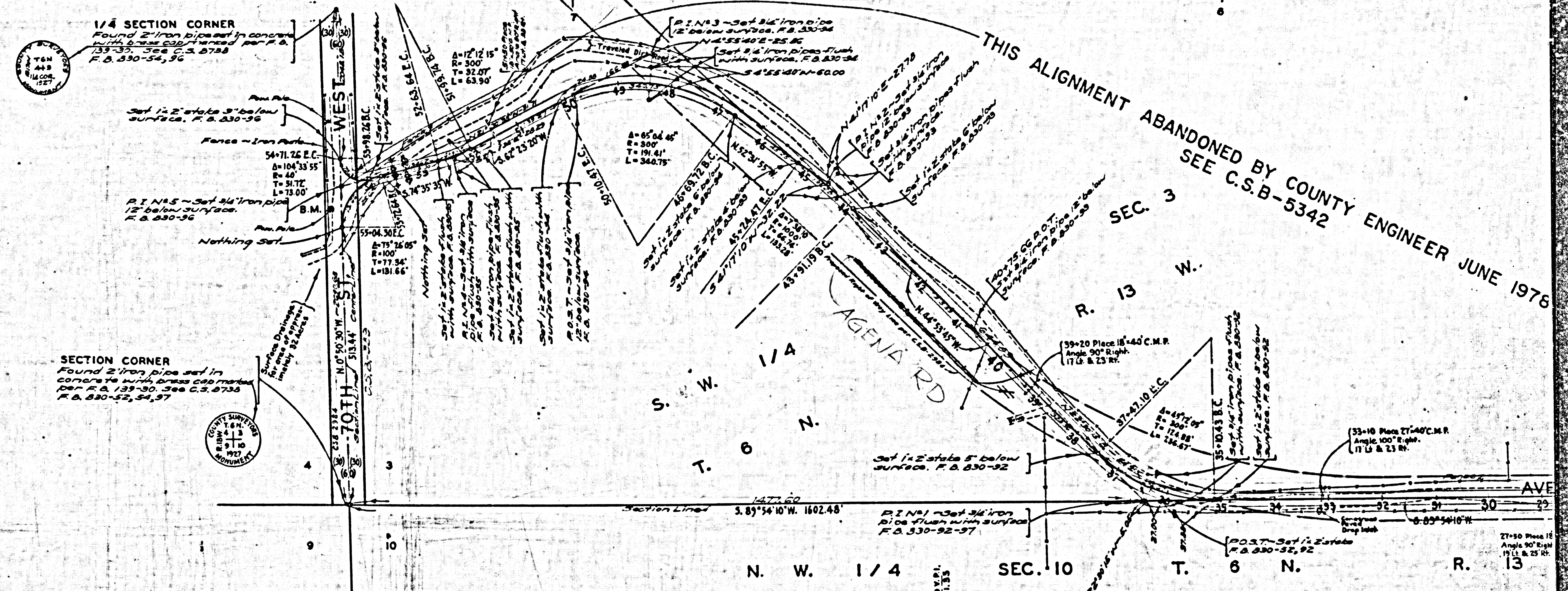


B.M. ELEV. = 2874.442
County Surveyors Monument at $\frac{1}{4}$ Cor. Secs.
S+10, T. 6 N., R. 13 W. 18' below surface.
F. B. 830-60+268

CSB-1702-1
A20FA3

B.M.
Top of 6"x6" Cor.
St. W. - Ave. N. 1/4

THIS ALIGNMENT ABANDONED BY COUNTY ENGINEER JUNE 1976
SEE C.S.B-5342



Cu. Yds. Excavation	0	54	104	354	52	7	600	50	1492	457	48	85	37	46	172	223	44	99	82	42	389	263	40	1	120	38	819	356	36	3	3	34	0	32	354	256		
Cu. Yds. Embankment	116	226	269																																			
Sq. Yds. Overhaul																																						

CSB-1702-1
A3 OF A3