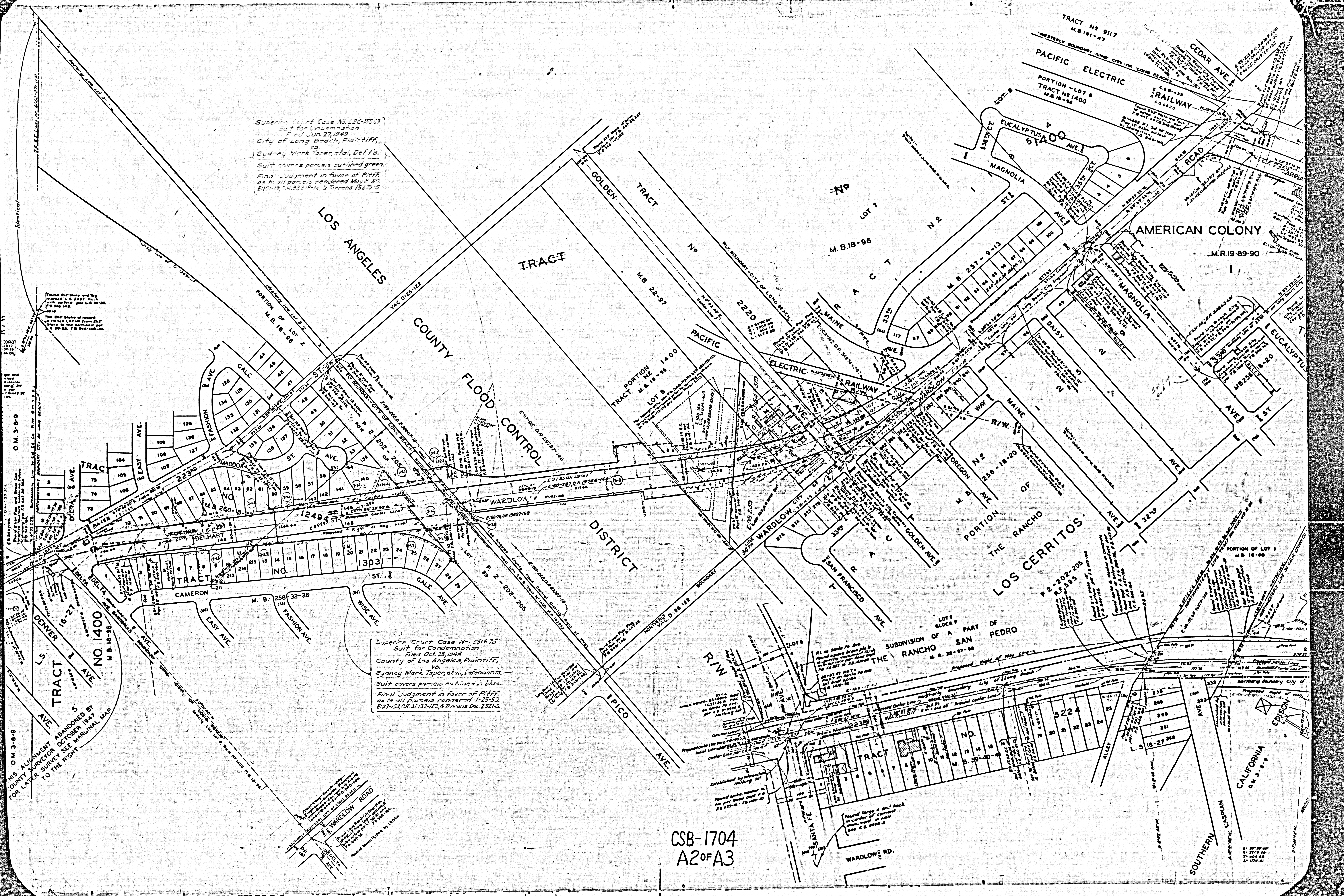


Superior Court Case No. 150-182-3
 Suit for Condemnation
 Filed Jun. 27, 1949
 City of Long Beach, Plaintiff,
 vs.
 Sydney Mark Taper et al., Def'ts.
 Suit covers parcels outlined green.
 Final Judgment in favor of Plaintiff
 as to all parcels rendered May 2, 1951
 E-37-153, C.R. 32132-122, & Tracts 15275-S

Superior Court Case No. 151-675
 Suit for Condemnation
 Filed Oct. 28, 1943
 County of Los Angeles, Plaintiff,
 vs.
 Sydney Mark Taper et al., Defendants.
 Suit covers parcels outlined in blue.
 Final Judgment in favor of Plaintiff
 as to all parcels rendered 1-25-50,
 E-37-153, C.R. 32132-122, & Tracts D.C. 2521-S



Found 2 1/2' State and City
 records L.S. 1927 14-15
 from surface per L.S. 18-96
 P. 340-342

O.M. 3-8-9

O.M. 3-8-9

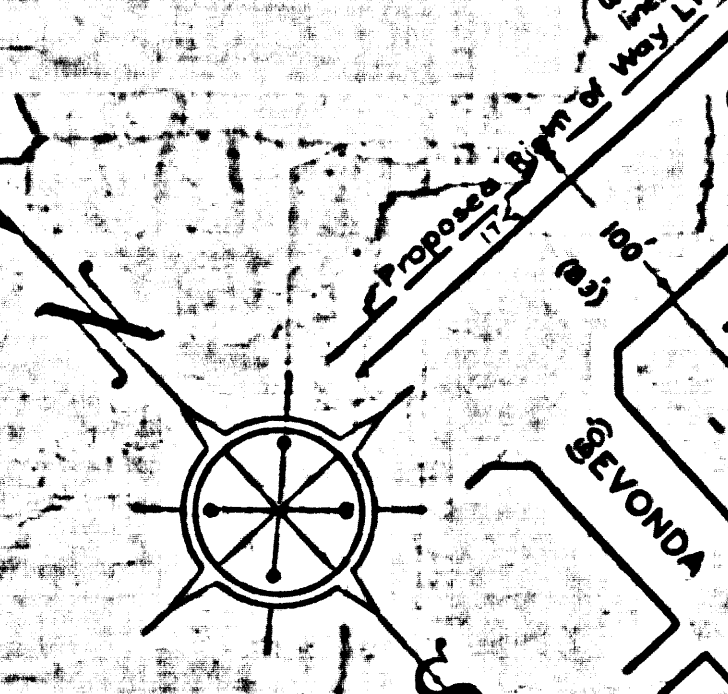
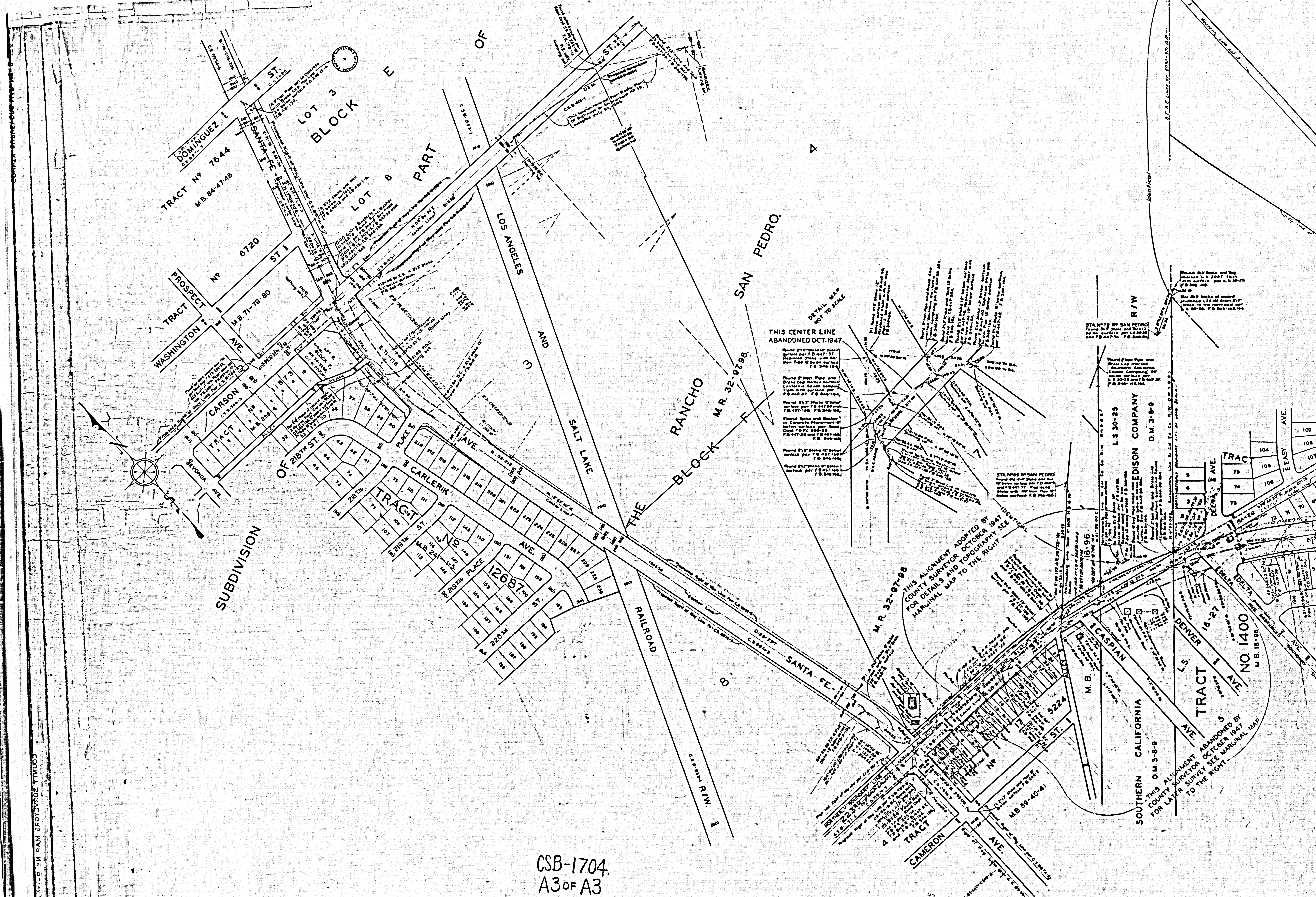
O.M. 3-8-9

THIS ALIGNMENT ABANDONED BY
 COUNTY SURVEYOR OCTOBER 1941
 FOR LATER SURVEY SEE MARSHAL MAP

WARDLOW ROAD
 (See map for location of road)
 Wardlow Road, Los Angeles County, California
 Surveyed by J. H. ...
 ...

CSB-1704
 A2 of A3

California
 1943



COPYRIGHT 1917 BY THE SOUTHERN PACIFIC RAILROAD COMPANY

CSB-1704
A3 OF A3

THIS CENTER LINE
ABANDONED OCT. 1947

Found 2 1/2" Stake 17' from
surface per F.B. 447-27.
Replaced stake with
iron Pipe 12' from surface
per F.B. 447-27. F.B. 447-27
F.B. 447-106. F.B. 447-104.

Found 2 1/2" Stake 17' from
surface per F.B. 447-27.
Replaced stake with
iron Pipe 12' from surface
per F.B. 447-27. F.B. 447-27
F.B. 447-106. F.B. 447-104.

Found 2 1/2" Stake 17' from
surface per F.B. 447-27.
Replaced stake with
iron Pipe 12' from surface
per F.B. 447-27. F.B. 447-27
F.B. 447-106. F.B. 447-104.

Found 2 1/2" Stake 17' from
surface per F.B. 447-27.
Replaced stake with
iron Pipe 12' from surface
per F.B. 447-27. F.B. 447-27
F.B. 447-106. F.B. 447-104.

Found 2 1/2" Stake 17' from
surface per F.B. 447-27.
Replaced stake with
iron Pipe 12' from surface
per F.B. 447-27. F.B. 447-27
F.B. 447-106. F.B. 447-104.

THIS ALIGNMENT ADOPTED BY
COUNTY SURVEYOR OCTOBER 1947
FOR DETAILS MAP TO THE RIGHT

SOUTHERN CALIFORNIA
O.M. 3-8-9
THIS ALIGNMENT ADOPTED BY
COUNTY SURVEYOR OCTOBER 1947
FOR LATER SURVEY SEE MARGINAL MAP
TO THE RIGHT

L.S. 30-25

EDISON COMPANY
O.M. 3-8-9

TRACT NO 1400
M.B. 18-96

TRACT NO 1400
M.B. 18-96

TRACT NO 1400
M.B. 18-96