

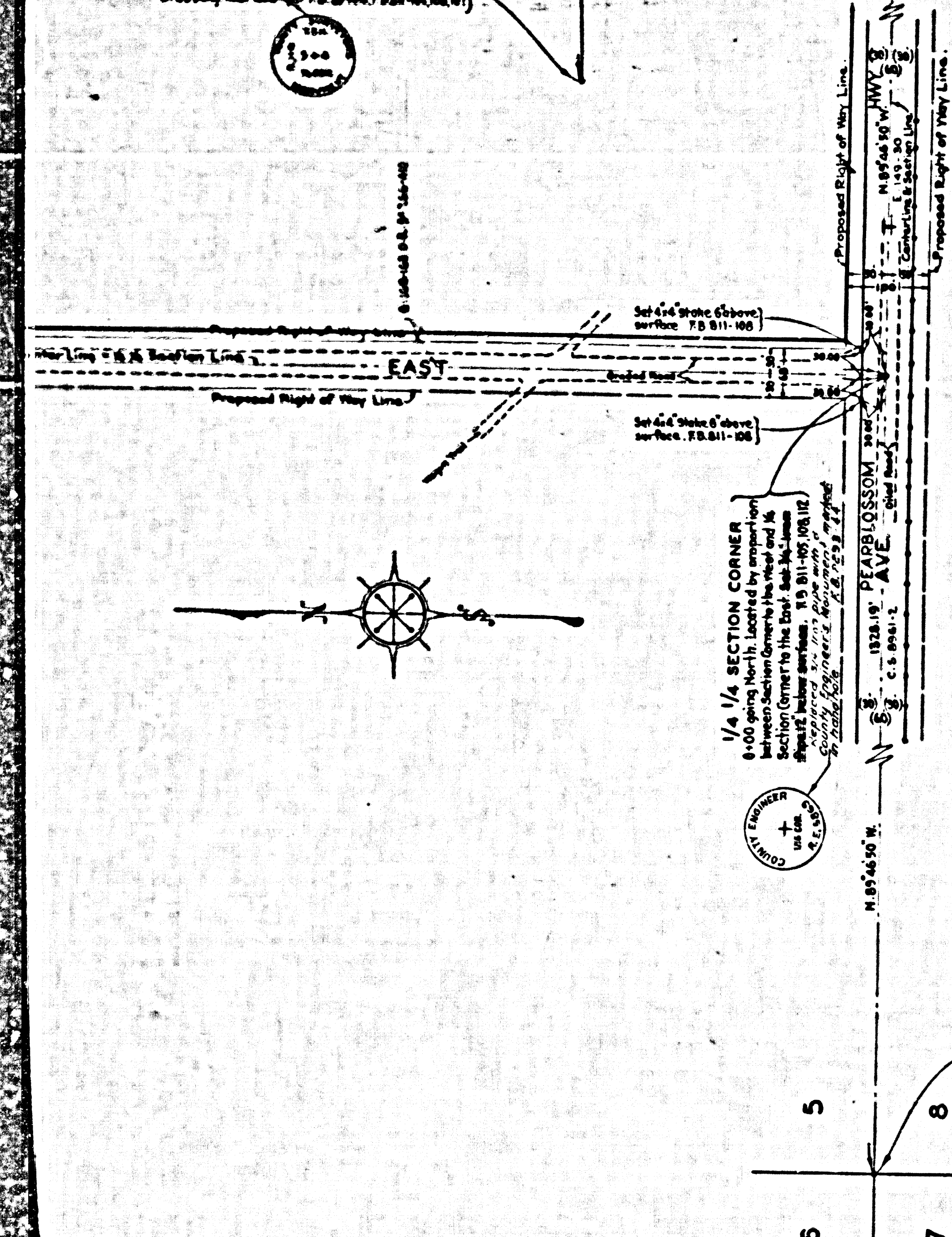
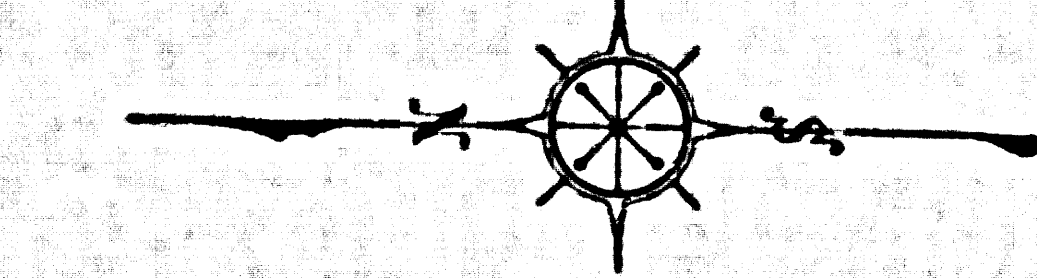
Cont. as per
26863-356

CLOSING CORNER
Corner to Section 33, T.5 N., R.11 W.
Set 2 Iron Pipe in concrete of below surface
with Brass Cap marked - F.B. 811-104(12)
F.B. 811-104(12)

PEAR BLOSSOM ST. 47TH ST. EAST (HIGHWAY) C.S. 8886
PEAR BLOSSOM ST. 47TH ST. EAST (HIGHWAY) C.S. 8886
PEAR BLOSSOM ST. 47TH ST. EAST (HIGHWAY) C.S. 8886

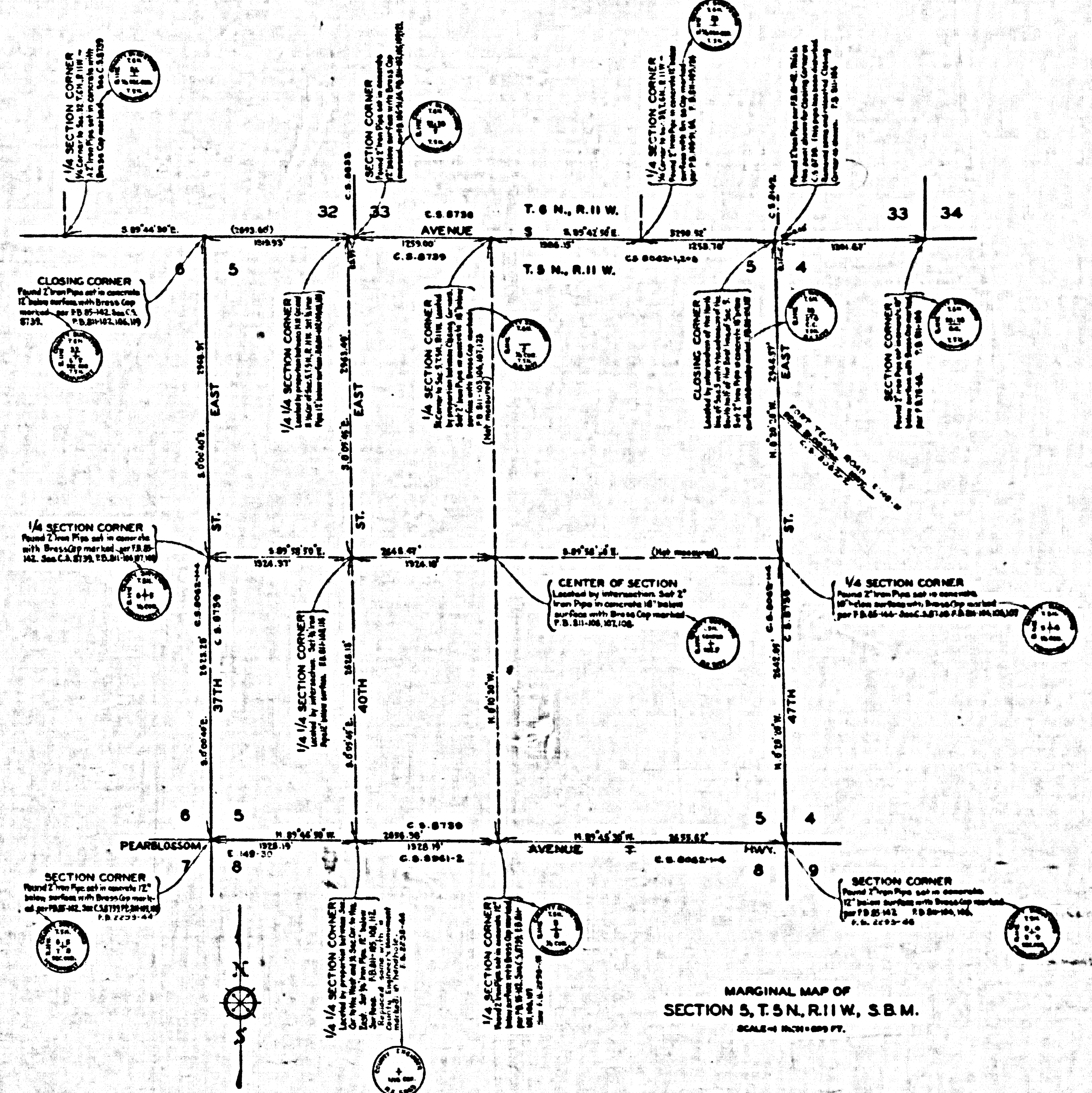
SECTION CORNER
Corner to Section 33 and 34, T.5 N., R.11 W.
Found 2 Iron Pipe set in concrete of below
surface with Brass Cap marked - F.B. 811-104
F.B. 811-104

1/4 SECTION CORNER
South 1/4 Corner Section 5, T.5 N., R.11 W.
Found 2 Iron Pipe set in concrete below
surface with Brass Cap marked - F.B. 811-105, 107
F.B. 811-105, 107



1/4 SECTION CORNER
S.W. Corner of Section 5, T.5 N., R.11 W.
Found 2 Iron Pipe set in concrete below
surface with Brass Cap marked - F.B. 811-105, 107
F.B. 811-105, 107

SECTION CORNER
S.W. Corner of Section 5, T.5 N., R.11 W.
Found 2 Iron Pipe set in concrete below
surface with Brass Cap marked - F.B. 811-105, 106
F.B. 811-105, 106



MARGINAL MAP OF
SECTION 5, T.5 N., R.11 W., S.B.M.
SCALE - 1 INCH = 100 FT.

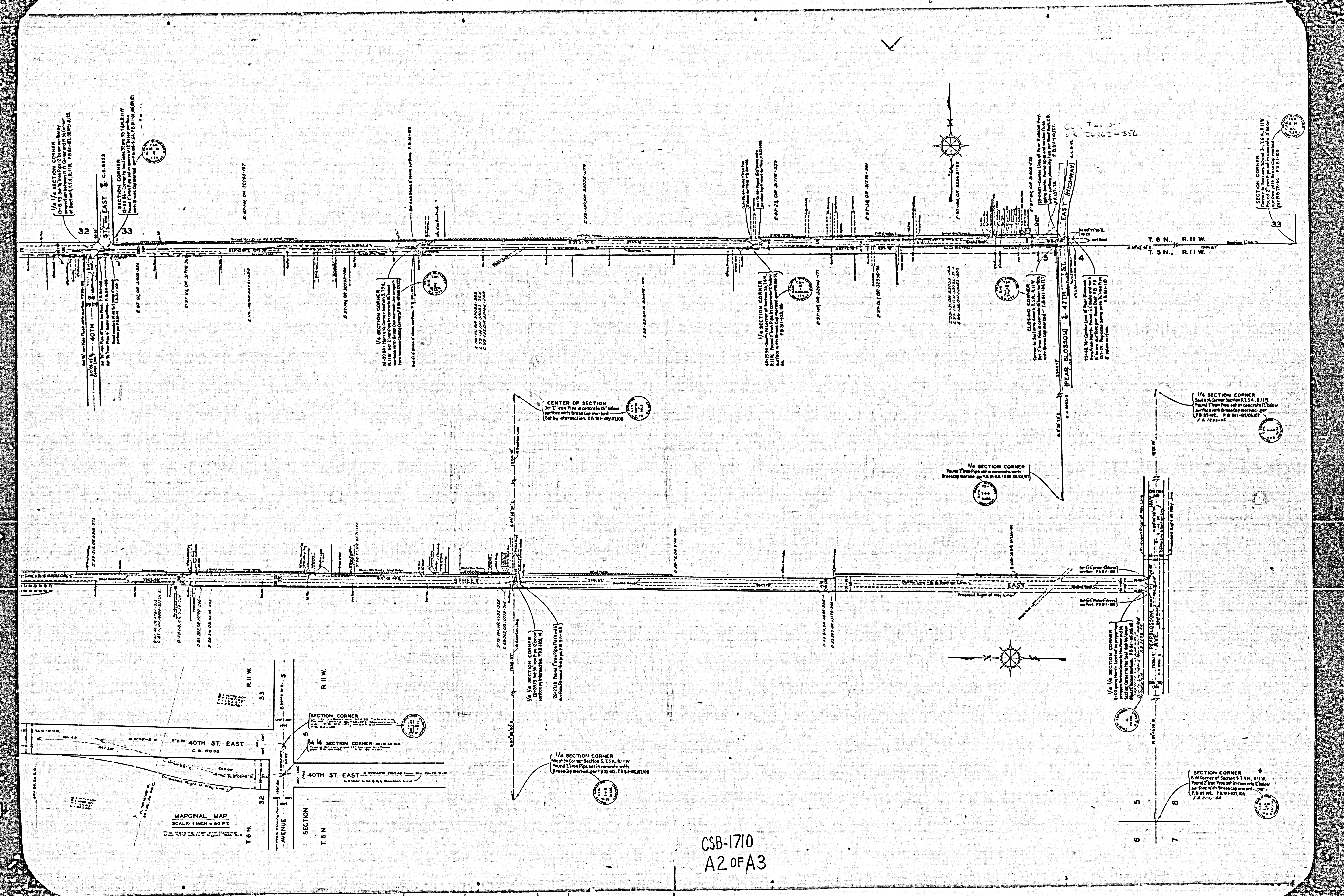
MAP OF
40TH STREET EAST
FROM
AVENUE T TO AVENUE S
AND
AVENUE S
FROM
37TH ST. EAST TO 47TH ST. EAST

COUNTY SURVEYORS MAP NO B-1710
SCALE - 1 INCH = 100 FT.

JOB NUMBER 8058
ALFRED JONES - COUNTY SURVEYOR
SURVEYED MAY - JUNE, 1941
SURVEYED AT VERBAL REQUEST OF COUNTY ROAD
COMMISSIONER UNDER RULE 21, ORD. NO 929.
BEARINGS ARE BASED ON THE BEARING OF WEST LINE
OF SEC. 5, T.5 N., R.11 W., AS SHOWN ON C.S. 8730.
F. B. 811 - 101 TO 128
FIELD WORK BY..... E. A. ROSECRANS
OFFICE WORK BY..... K. R. MCPHERSON
..... A. E. TIMMONS
CHECKED BY..... K. R. MCPHERSON

Revised August, 1948, P.L.R.
Revised January, 1950, S.D.B.

CSB-1710
A1 OF A3



MARGINAL MAP
SCALE: 1 INCH = 50 FT.
This Marginal Map and Vertical
Curve Data are subject to change
without notice.

CSB-1710
A2 OF A3

Count as per
OK 26863-356

SECTION CORNER
S.W. Corner of Section 9, T. 5 N., R. 11 W.
Found 2" Iron Pipe set in concrete 18" below
surface with Brass Cap marked per
F.B. 81-104, 107, 108
F.B. 81-104, 107, 108

1/4 SECTION CORNER
Found 2" Iron Pipe set in concrete with
Brass Cap marked per F.B. 81-104, 107, 108

1/4 SECTION CORNER
Found 2" Iron Pipe set in concrete with
Brass Cap marked per F.B. 81-104, 107, 108

CENTER OF SECTION
Set 2" Iron Pipe in concrete 18" below
surface with Brass Cap marked
per F.B. 81-104, 107, 108

1/4 SECTION CORNER
Found 2" Iron Pipe set in concrete with
Brass Cap marked per F.B. 81-104, 107, 108

1/4 SECTION CORNER
West 1/4 Corner Section 5, T. 5 N., R. 11 W.
Found 2" Iron Pipe set in concrete with
Brass Cap marked per F.B. 81-104, 107, 108

1/4 SECTION CORNER
Found 2" Iron Pipe set in concrete with
Brass Cap marked per F.B. 81-104, 107, 108

1/4 SECTION CORNER
Found 2" Iron Pipe set in concrete with
Brass Cap marked per F.B. 81-104, 107, 108

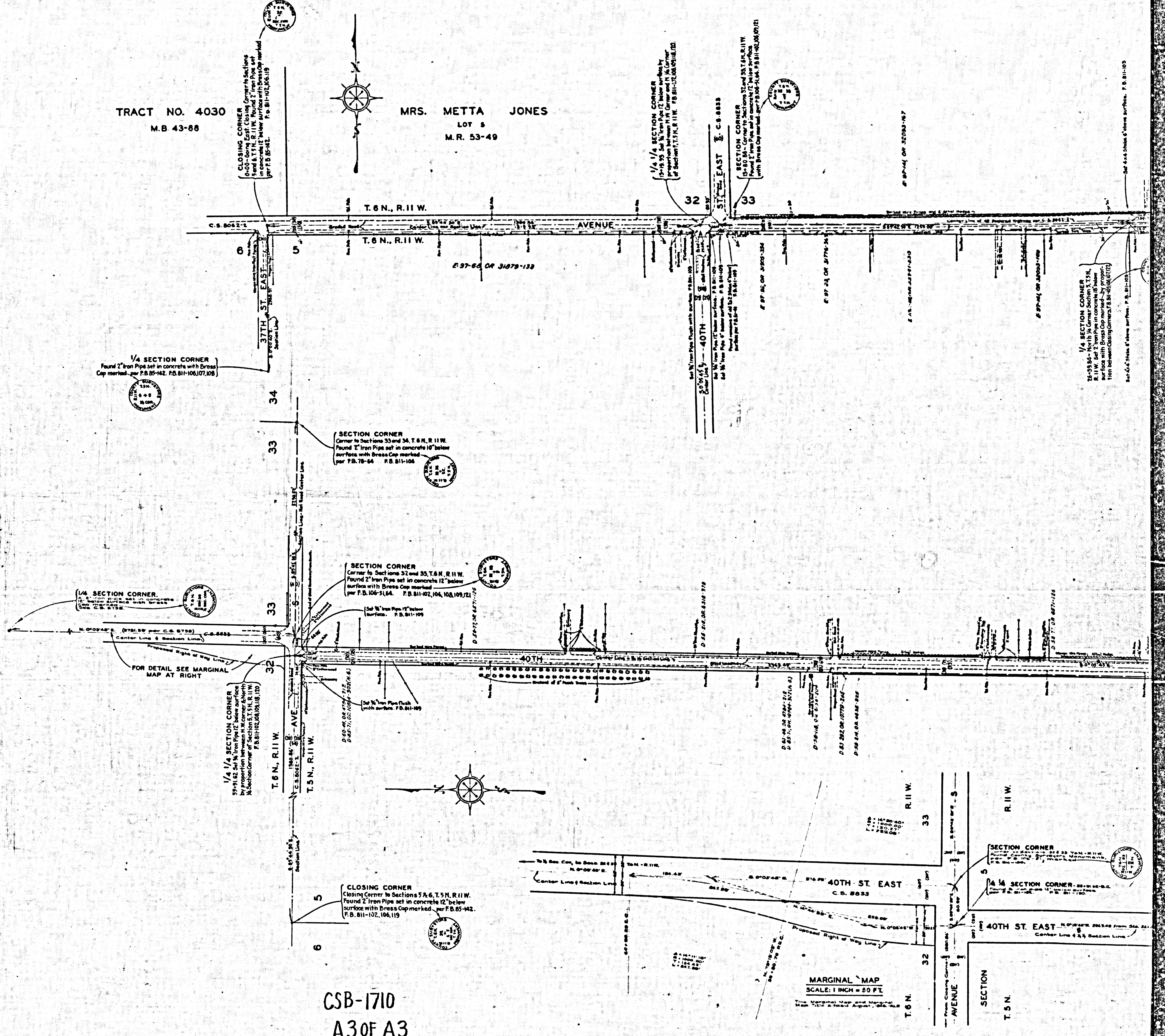
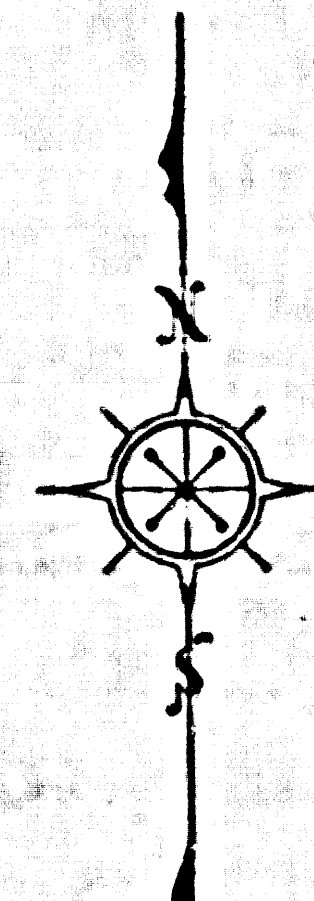
CLOSING CORNER
Corner to Section 4, T. 5 N., R. 11 W.
Found 2" Iron Pipe set in concrete with
Brass Cap marked per F.B. 81-104, 107, 108

1/4 SECTION CORNER
South 1/4 Corner Section 9, T. 5 N., R. 11 W.
Found 2" Iron Pipe set in concrete 18" below
surface with Brass Cap marked per
F.B. 81-104, 107, 108
F.B. 81-104, 107, 108

SECTION CORNER
Corner to Section 9, T. 5 N., R. 11 W.
Found 2" Iron Pipe set in concrete 18" below
surface with Brass Cap marked per
F.B. 81-104, 107, 108

TRACT NO. 4030
M.B. 43-88

MRS. METTA JONES
LOT 3
M.R. 53-49



1/4 SECTION CORNER
Found 2" Iron Pipe set in concrete with Brass
Cap marked per F.B. 85-142, F.B. 811-106, 107, 108

SECTION CORNER
Corner to Sections 33 and 34, T.6N., R.11W.
Found 2" Iron Pipe set in concrete 10" below
surface with Brass Cap marked
per F.B. 78-64, F.B. 811-106

SECTION CORNER
Corner to Sections 32 and 33, T.6N., R.11W.
Found 2" Iron Pipe set in concrete 12" below
surface with Brass Cap marked
per F.B. 106-3164, F.B. 811-102, 104, 108, 109, 121

1/4 SECTION CORNER
Found 2" Iron Pipe set in concrete with Brass
Cap marked per C.C. 8758

1/4 SECTION CORNER
Found 2" Iron Pipe set in concrete 12" below
surface with Brass Cap marked
per F.B. 811-102, 104, 108, 109, 121

CLOSING CORNER
Closing Corner to Sections 5, 6, T.5N., R.11W.
Found 2" Iron Pipe set in concrete 12" below
surface with Brass Cap marked per F.B. 85-142,
F.B. 811-102, 106, 119

CSB-1710
A3 OF A3

MARGINAL MAP
SCALE: 1 INCH = 50 FT.

1/4 SECTION CORNER
Found 2" Iron Pipe set in concrete with Brass
Cap marked per F.B. 85-142, F.B. 811-106, 107, 108

F.B. 85-142, OF 30288-147

F.B. 85-142, OF 30288-147