

MAP
 INDICATING BY A BOUNDARY LINE
 THE EXTENT OF THE TERRITORY COMPRISING
ACQUISITION AND IMPROVEMENT
DISTRICT NO. 70
 OF THE COUNTY OF LOS ANGELES

ASSESSED FOR REFUNDING THE OUTSTANDING INDEBTEDNESS OF THE SAID DISTRICT IN ACCORDANCE WITH PROVISIONS OF THE "ASSESSMENT BOND REFUNDING ACT OF 1933" AS AMENDED, AND PURSUANT TO THE RESOLUTION OF INTENTION ADOPTED SEPTEMBER 14, 1939 BY THE BOARD OF SUPERVISORS OF SAID COUNTY. EACH LOT, PRICE OR PARCEL OF LAND WITHIN THE ASSESSMENT DISTRICT IS SHOWN WITH DIMENSIONS IN FEET AND AN ASSESSMENT NUMBER IN A CIRCLE.

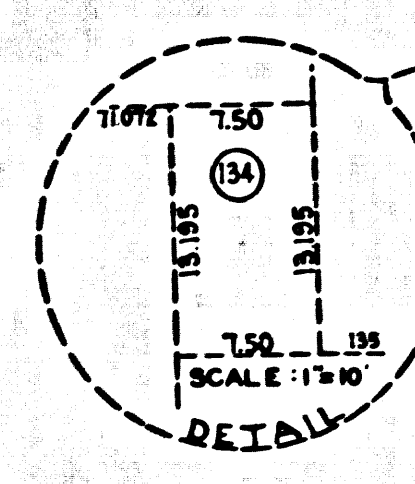
SCALE: 1" = 100' FEBRUARY 1940

ALFRED JONES - COUNTY SURVEYOR

SUBMITTED *[Signature]* APPROVED *[Signature]*
CHEF DEPUTY COUNTY SURVEYOR

APPROVED AS TO FORM
 JOHN H. O'CONNOR - COUNTY COUNSEL
 BY *[Signature]*
DEPUTY

SEE SHEET NO. 2



A.L.I. NO. 70
 REFUNDING MAP
 DRAWN W.B.C. 10-9-39
 CHECKED *[Signature]* 2-11-40

CSB 1711-1

SHEET NO. 1 OF 6 SHEETS