

SEE SHEET NO. 5

RECORD OF VERDES OF PALOS PLAT AND LOS ANGELES RAILWAY COMPANY'S RIGHT OF WAY

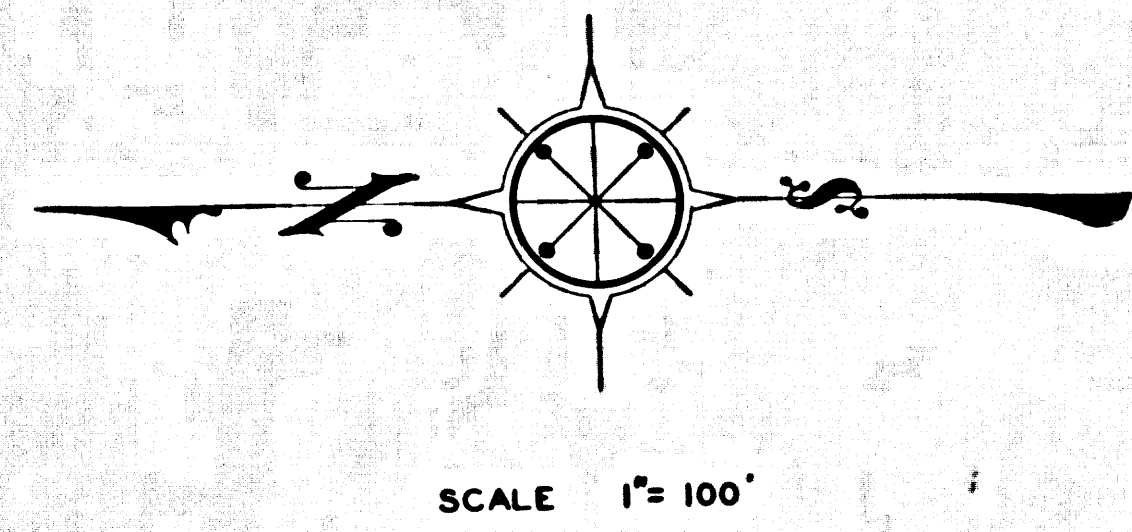
BOOK 2 - PAGE 37

PARTITION OF THE RANCHO LOS PALOS (CLERK'S DISTRICT FILED MAP NO. 2373 CASE NO. A1)

PARTITION OF THE RANCHO LOS PALOS (CLERK'S DISTRICT FILED MAP NO. 2373 CASE NO. A1)

1	2	3	4	5	6
SAN PEDRO			VILLA		
M. B.			7-126		
FRAMPTON TRACT (FORMERLY FRAMPTON STREET)					
LEONARDO AVENUE					
1	2	3	4	5	6
7	8	9	10	11	12
13	14	15	16	17	18
19	20	21	22	23	24
25	26	27	28	29	30

CSB 1711-6
A1 OF A2



SEE SHEET NO. 5

RECORD

LOS ANGELES

PALOS VERDES

PLAT

HARBOR

OF VERDES

OF

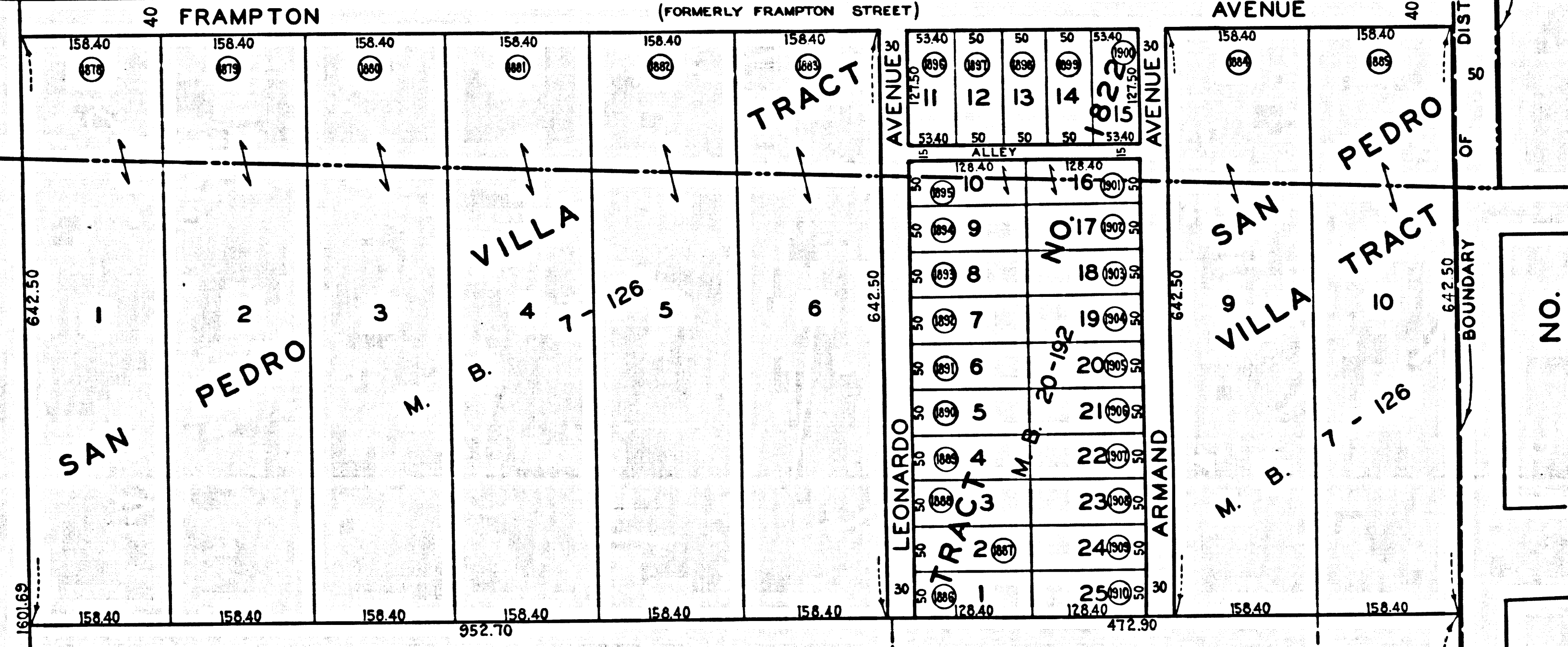
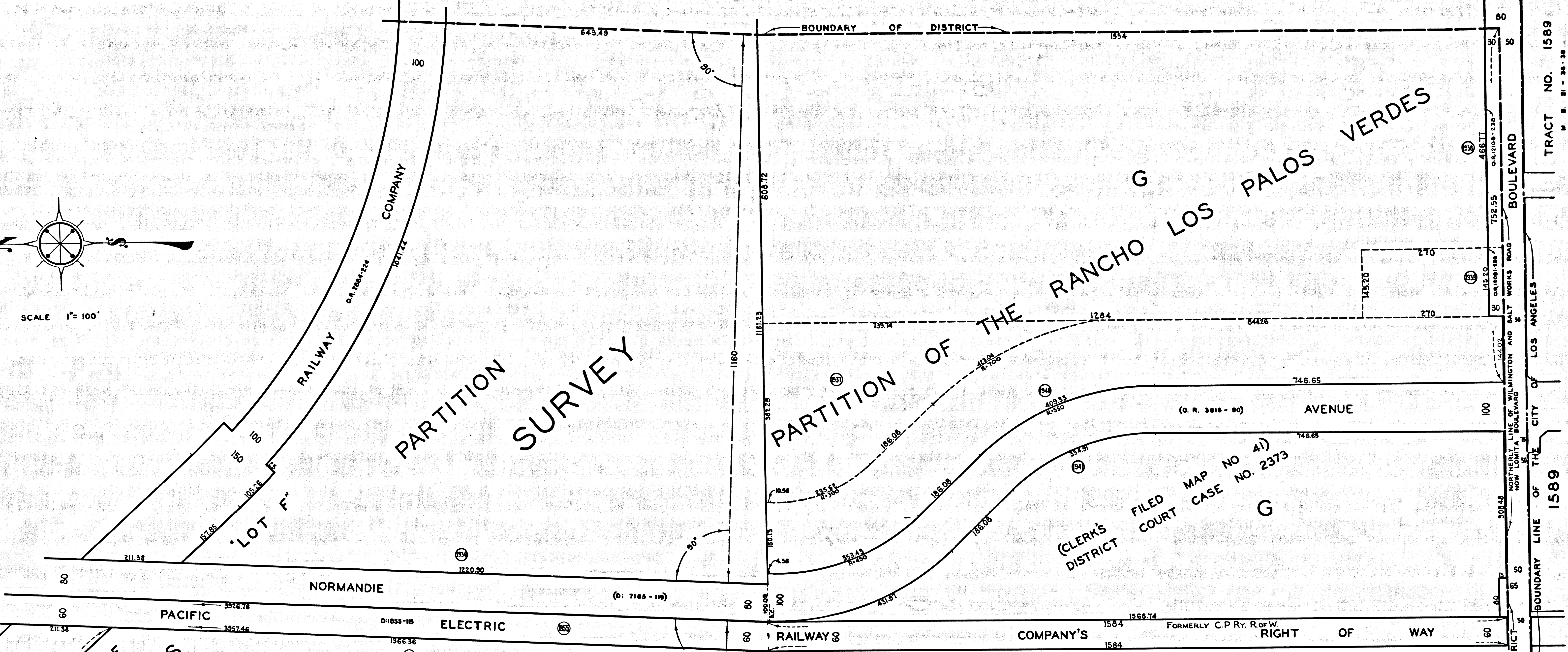
BOOK 2

PAGE 37

PARTITION SURVEY

PARTITION OF THE RANCHO LOS PALOS VERDES

PARTITION OF THE RANCHO LOS PALOS VERDES



TRACT NO. 1589

BOUNDARY LINE OF THE CITY OF LOS ANGELES

NO. B. 21 - 38 - 39

NO.

LOMITA TRACT

A & I NO. 70 REFUNDING MAP

CSB 1711-6 A2 OF A2

SHEET NO. 6 OF 6 SHEETS