

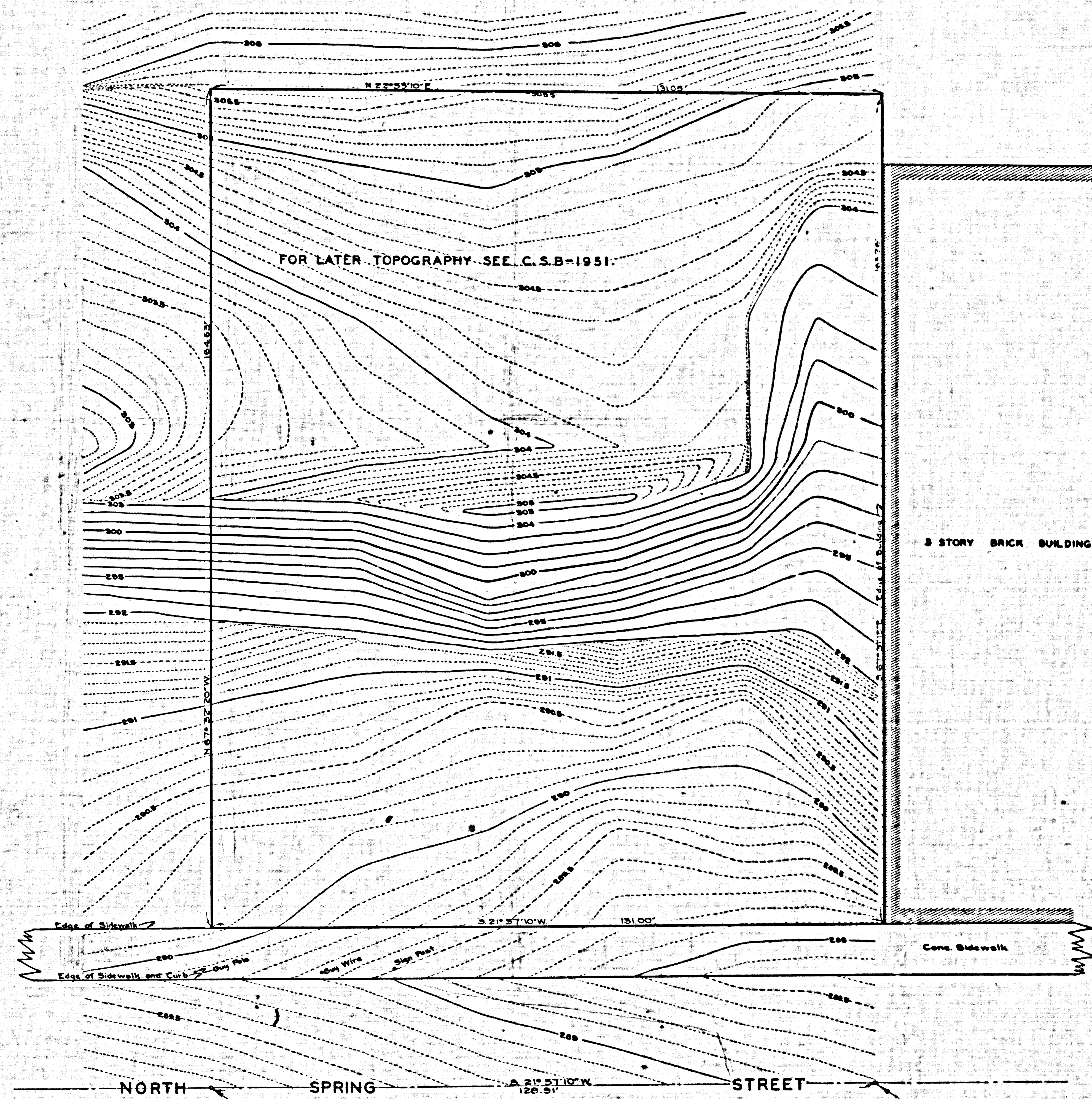
MAP OF
COUNTY PARKING LOT
 BEING
 A PORTION OF LOTS 5 AND 6
 SEPULVEDA TRACT M.B. 4-405
 (OR. 15625-310)
 COUNTY SURVEYORS MAP NO. B-1714
 SCALES - AS SHOWN
 JOB NUMBER 7687
 ALFRED JONES - COUNTY SURVEYOR
 SURVEYED JULY 1941
 SURVEYED UPON REQUEST OF THE CHIEF MECHANICAL
 ENGINEER PER RULE 21, ORDINANCE 829, BY LETTER
 DATED JULY 9, 1941
 BEARINGS ARE BASED ON THE BEARING OF
 SPRING STREET AS SHOWN ON C.S.B-1585
 F. B. 87-108-123 : F. B. 881-9-16
 FIELD WORK BY L. D. MOORE
 OFFICE WORK BY J. ALYON
 D. WHITE
 CHECKED BY K. R. MAPHERSON
 REVISED JULY 1949 BY L. C. WILSON

INDEX 2

NOTE: FOR ADDITION TO
 COUNTY PARKING LOT SEE C.S.B-1951.

DATUM - MEAN SEA LEVEL
 ELEVATIONS SHOWN HEREON ARE BASED UPON
 B.M. 32 (F. B. 881-9), THE DATUM OF WHICH
 WAS DETERMINED FROM U.S.C. & G.S. M. S. 32
 (43-404) BASED UPON THE U.S.C. & G.S. ADJUST-
 MENT OF 1934

SCALE - 1 INCH = 30 FEET
 CSB-1714
 A1 OF A2



TOPOGRAPHY
SCALE: 1 INCH = 10 FEET
CONTOUR INTERVAL 0.10

CSB-1714
A20FA2

