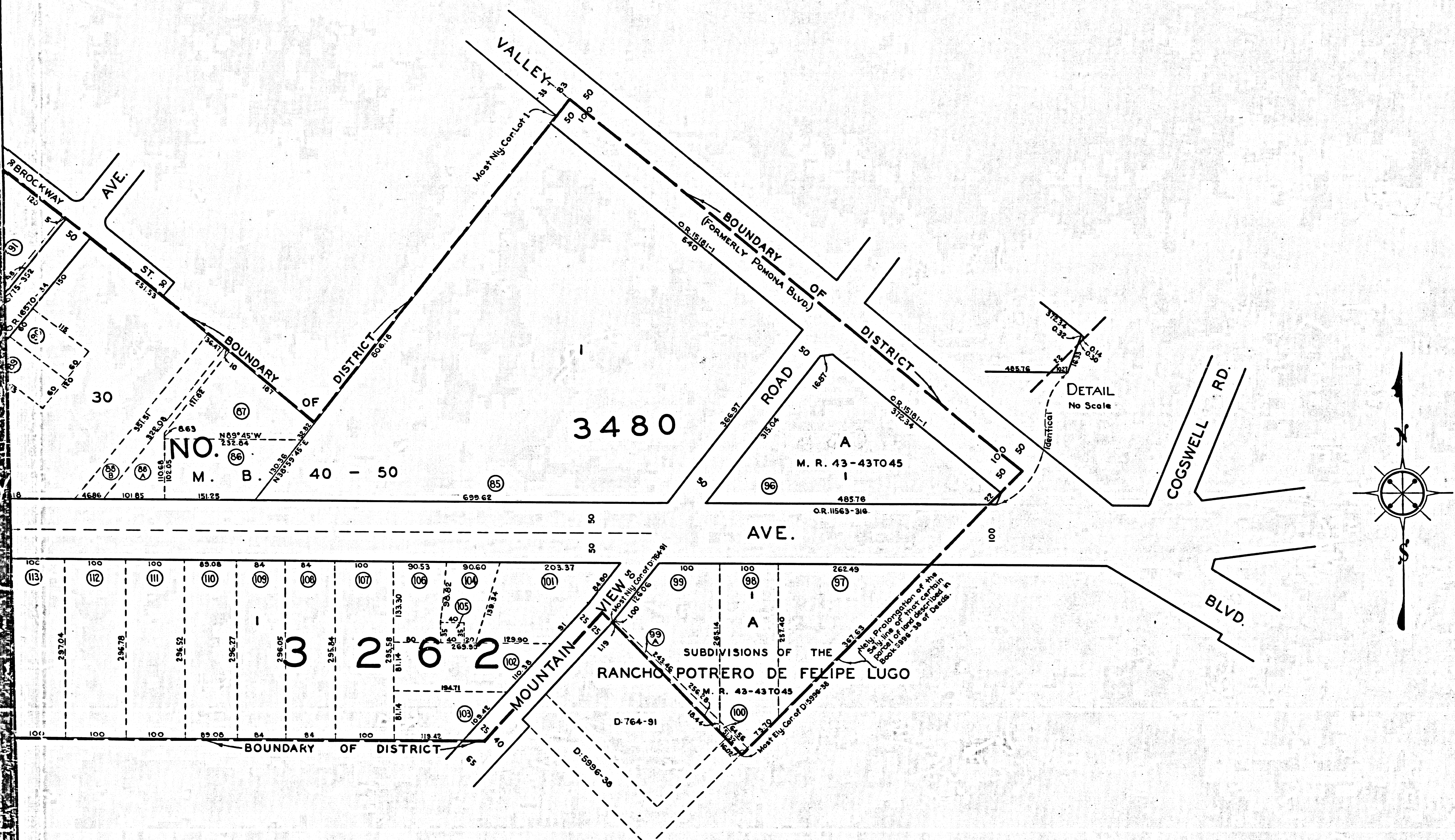


CSB 1724
 A1 OF A2



MAP
 INDICATING BY A BOUNDARY LINE
 THE EXTENT OF THE TERRITORY COMPRISING
ACQUISITION AND IMPROVEMENT
DISTRICT NO. 120
 OF THE COUNTY OF LOS ANGELES

ASSESSED FOR REFUNDING THE OUTSTANDING INDEBTEDNESS OF THE SAID DISTRICT
 IN ACCORDANCE WITH THE PROVISIONS OF THE "ASSESSMENT BOND REFUNDING
 ACT OF 1933" AS AMENDED, AND PURSUANT TO THE RESOLUTION OF INTENTION
 ADOPTED MARCH 11, 1941 BY THE BOARD OF SUPERVISORS OF SAID COUNTY. EACH
 LOT, PIECE OR PARCEL OF LAND WITHIN THE ASSESSMENT DISTRICT IS SHOWN
 WITH DIMENSIONS IN FEET AND AN ASSESSMENT NUMBER IN A CIRCLE.

SCALE: 1" = 100' JUNE 1941

ALFRED JONES - COUNTY SURVEYOR
 SUBMITTED *[Signature]* DEPUTY APPROVED *[Signature]*
COUNTY SURVEYOR

APPROVED AS TO FORM
 JOHN H. O'CONNOR, COUNTY COUNSEL
 BY *[Signature]* DEPUTY

CSB 1724
 A2 OF A2

A & I NO. 120
 REFUNDING MAP
 DRAWN A. K. FRYREAR MAY 1941
 TRACED FRYREAR-POGGE MAY 1941
 CHECKED *[Signature]* MAY 1941