

**NOTE:**

- Elevations are in feet above U.S.G.S. or mean Sea Level Datum.
- Elevations of all Lateral Inlets refer to the intersection of the invert of the Lateral with the inside face of the main drain or structure.
- Stations of all Connector Pipe Inlets refer to the intersection of the center line of the connector pipe with the inside face of the main drain or structure. Bring connector pipes in radially to pipe drains where structures are not designated.
- Connector Pipe located under pavement with cover less than two feet shall be crotched according to Case C4 (Standard Dc 54).
- All Pipe not otherwise specified shall be Standard Strength Cement Concrete Pipe.
- For Structures marked SPEC. STR. NO. 1 see structural details shown to left hereon.
- All Structures not otherwise specified are Standard Structures. See details on Standard Plans.
- For details of cement concrete for Reinforced Concrete Arch Section see Standard Dc 53.
- For details of reinforcing steel for Reinforced Concrete Arch Section see Standard Dc 60.
- Elevations shown at Catch Basins refer to top of proposed curb at center line of basin if one elevation is given or at ends of basin if two elevations are given.
- Sanitary Sewers crossing over or with a clearance of 1.50 feet or less under Storm Drain shall be constructed or reconstructed as shown on Standard Dc 58 except as otherwise specified on detail Sewer Plan.

**88<sup>TH</sup> ST. AND VERMONT AVE.  
DRAINAGE SYSTEM**  
OF THE COUNTY OF LOS ANGELES, CALIFORNIA  
PLAN AND PROFILE ON  
MANCHESTER AVE LATERAL  
88<sup>TH</sup> ST. LINE  
ALSO  
SPECIAL STRUCTURES  
SHEET 1 OF 1 SHEET

SCALE VERT 1"=4'  
HORIZ 1"=40'

JUNE 1941

ALFRED JONES COUNTY ENGINEER

RECOMMENDED *[Signature]* APPROVED *[Signature]*

THIS DRAWING AND THE DATA HEREON ARE HEREBY MADE A PART OF THE SPECIFICATIONS

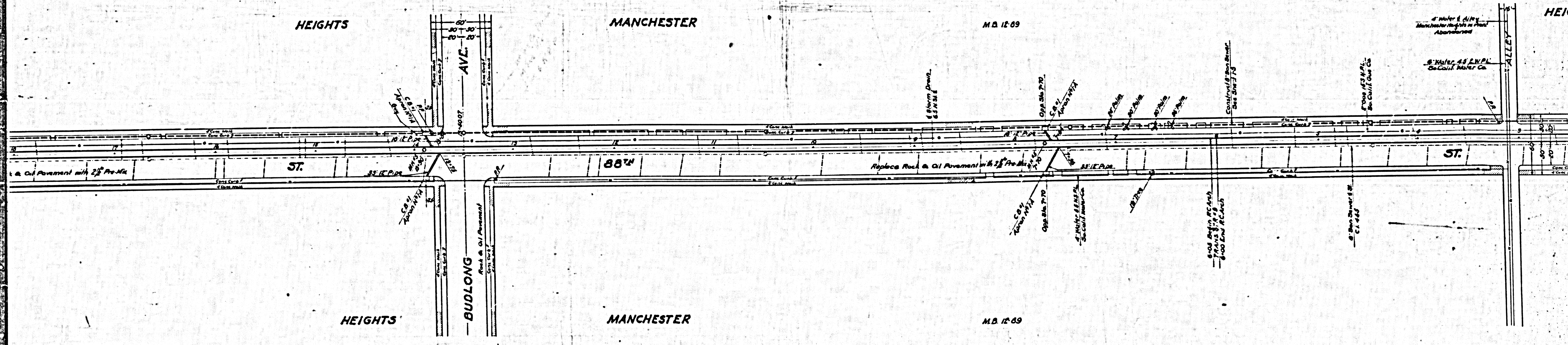
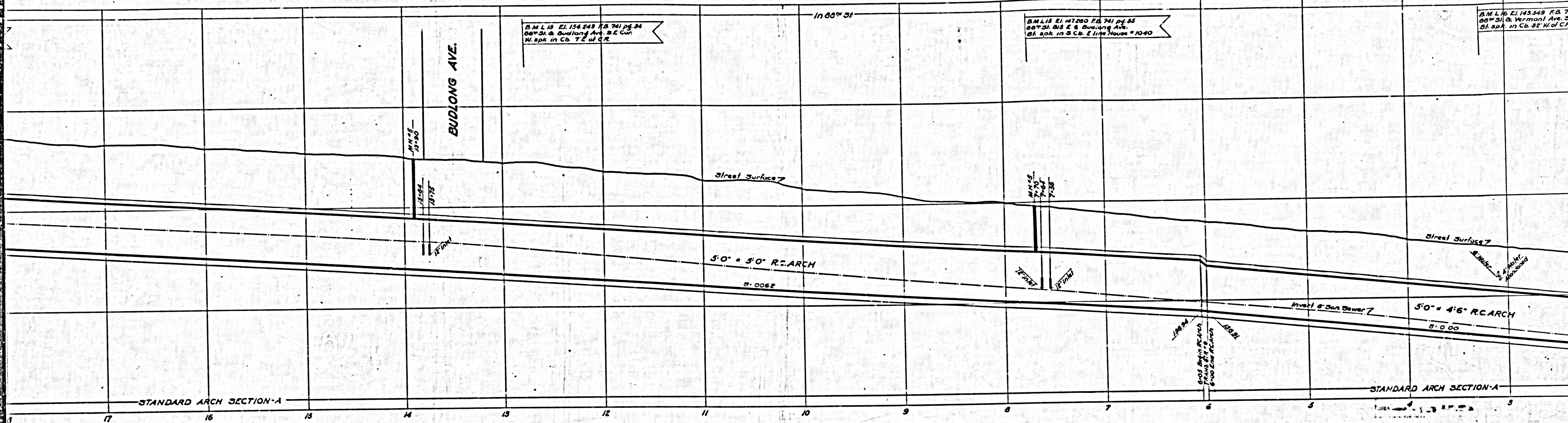
| REFERENCE | DESIGNED | J.H. RICE     | FEB 1941  |
|-----------|----------|---------------|-----------|
| P.B.      | TRACED   | W.F. BRUSHER  | MAY 1941  |
|           | CHECKED  | P.L. HUNSTOCK | MAR. 1941 |

APPROVED *[Signature]* June 27, 1941  
LLOYD ALDRICH, CITY ENGINEER

CSB-1727  
A1 OF A6

1

9



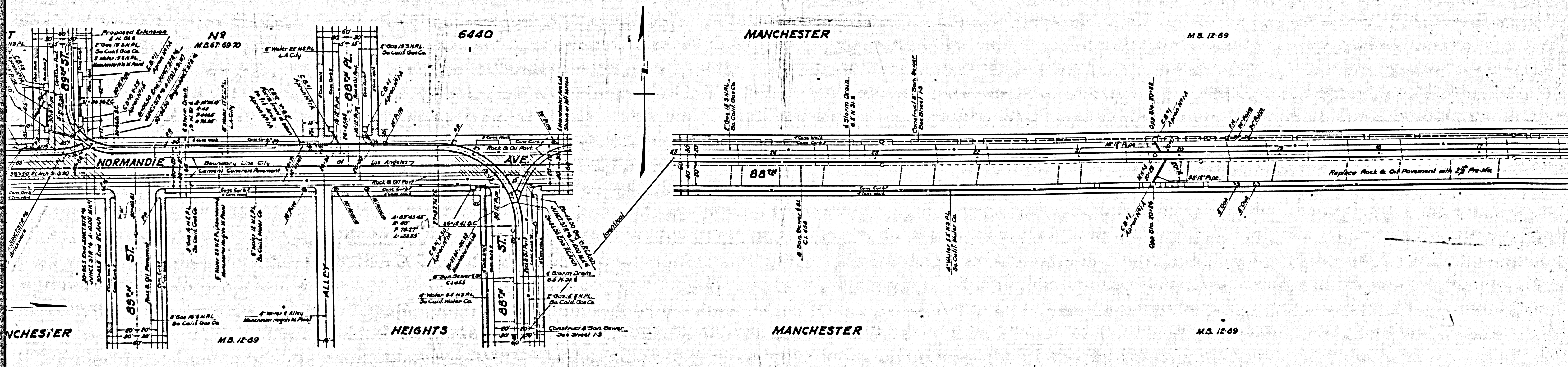
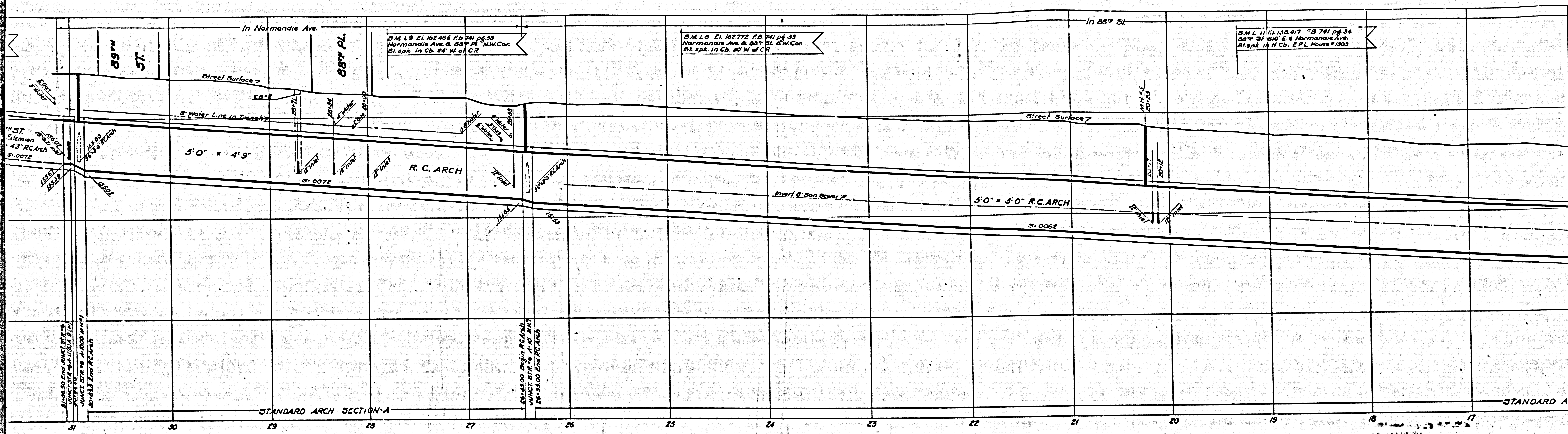
88th

STREET

LINE

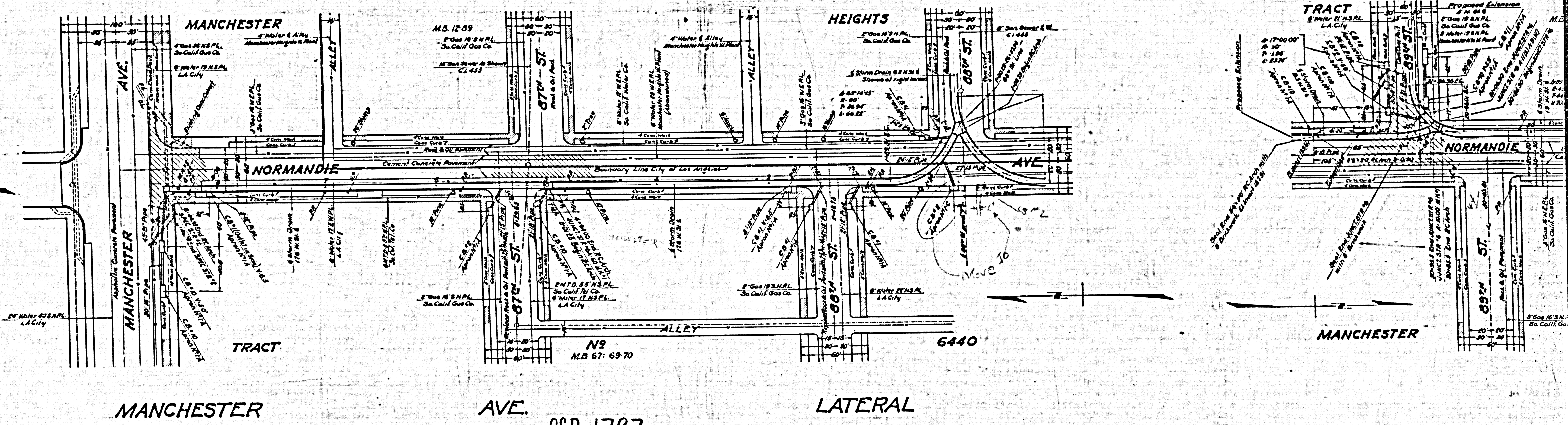
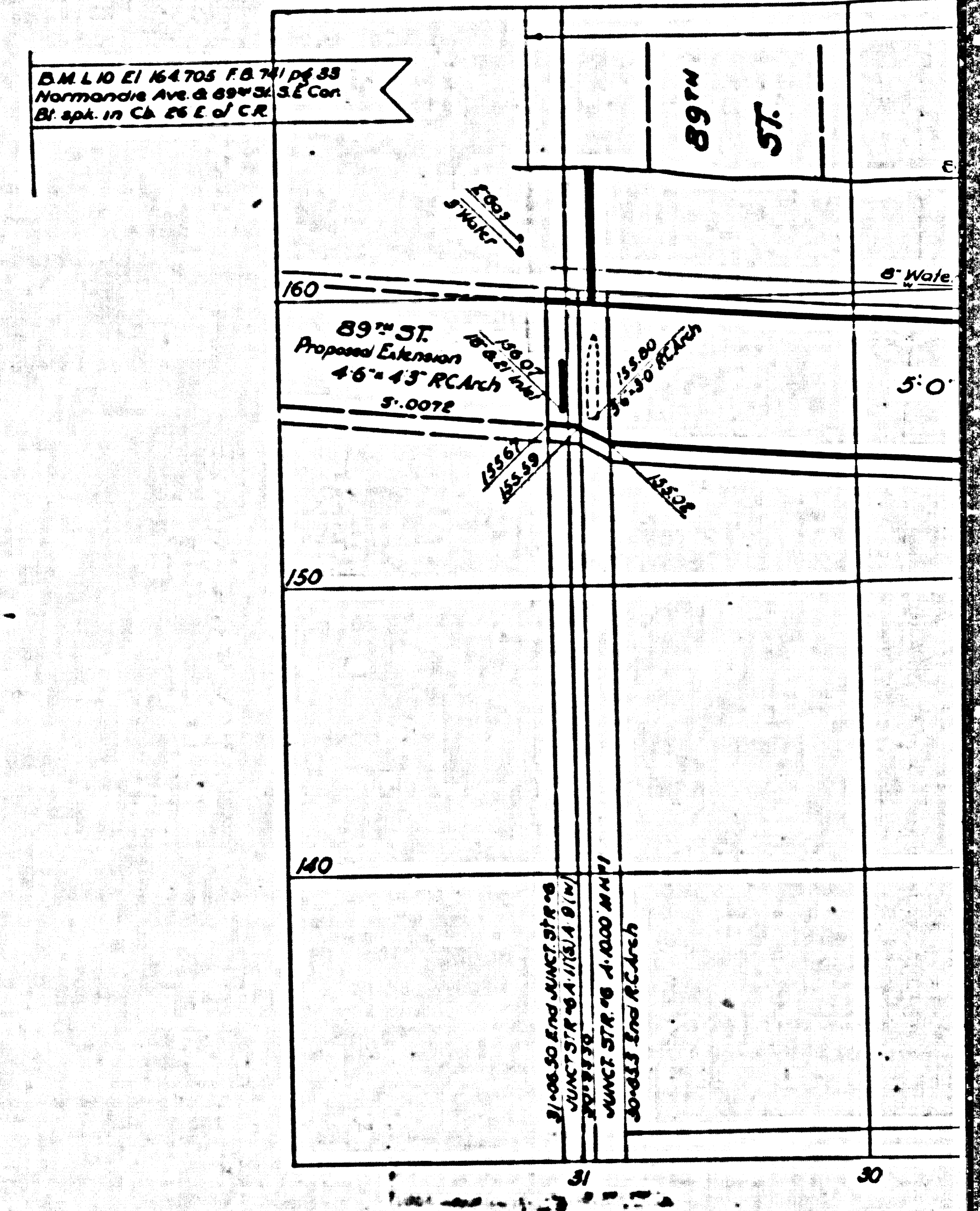
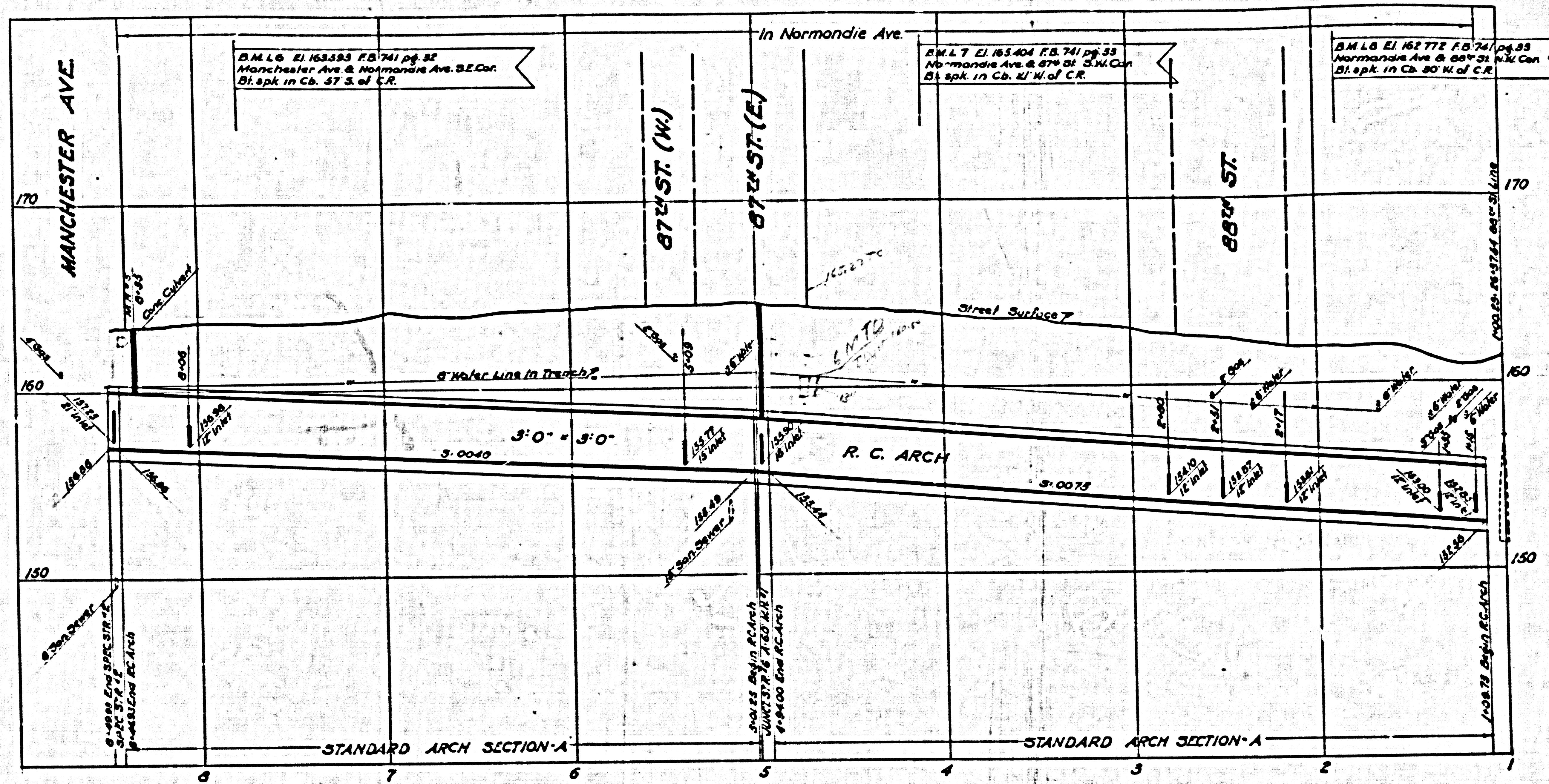
CSB-1727

A2 OF A6

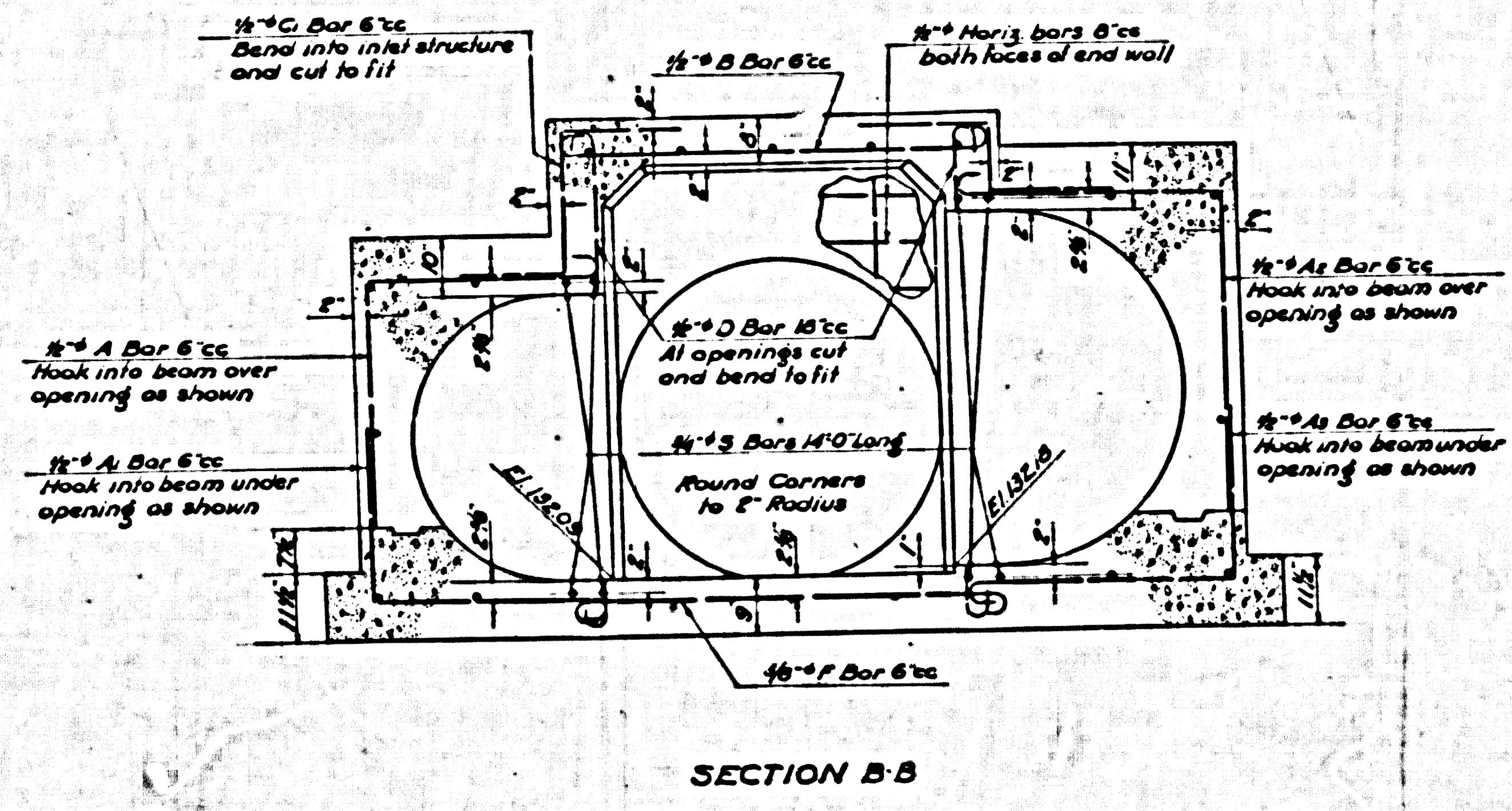
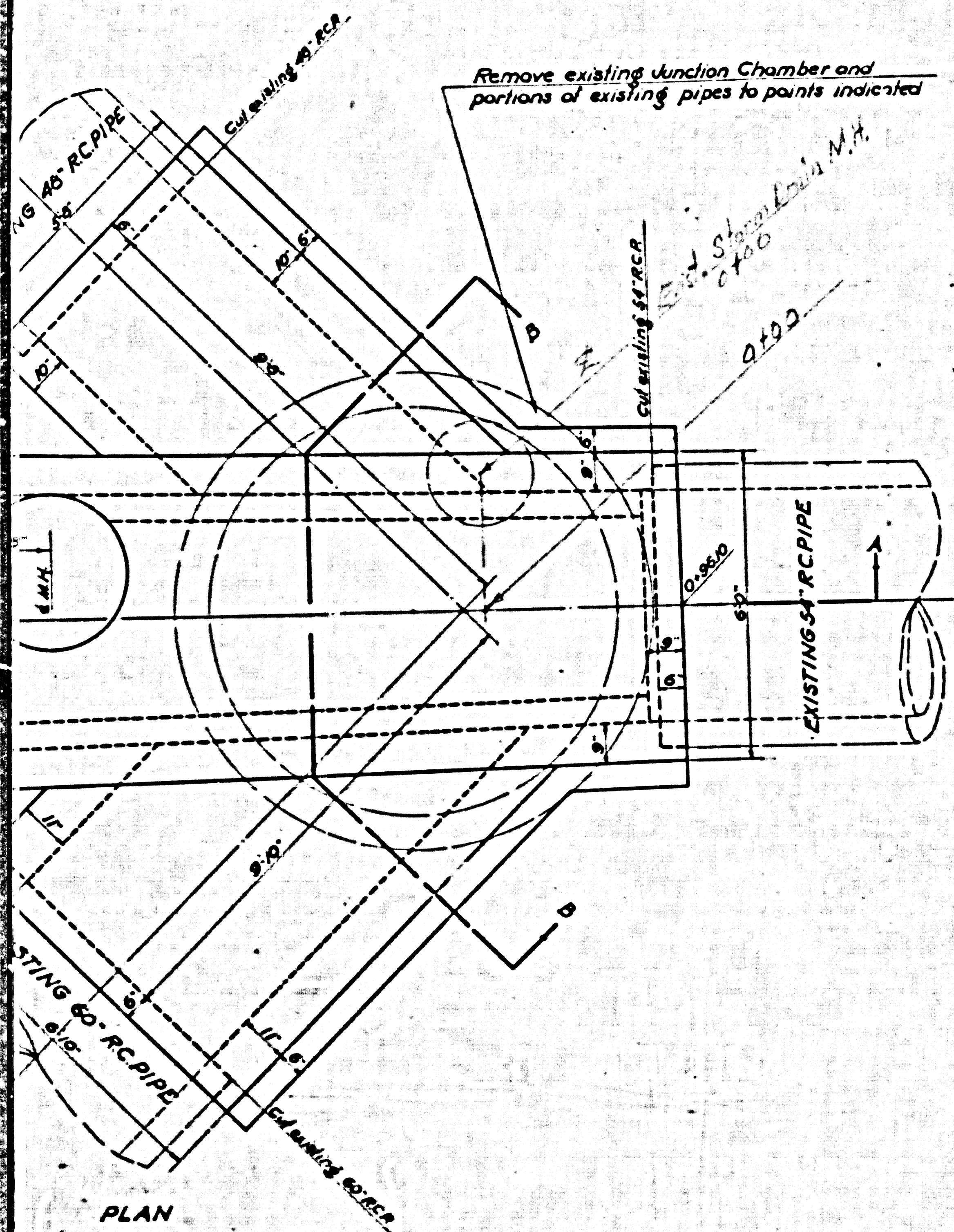


CSB-1727  
A 3 OF A 6

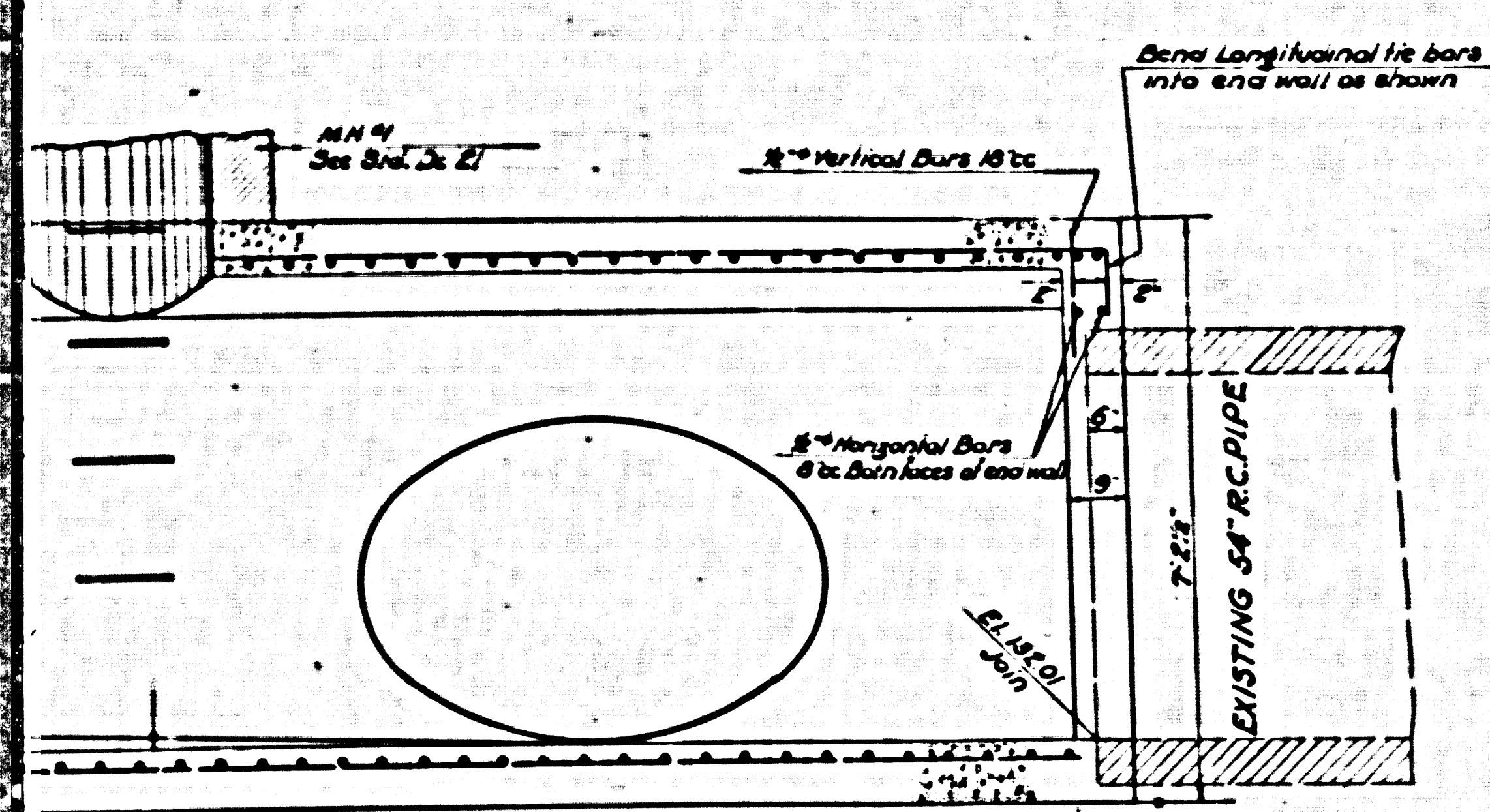
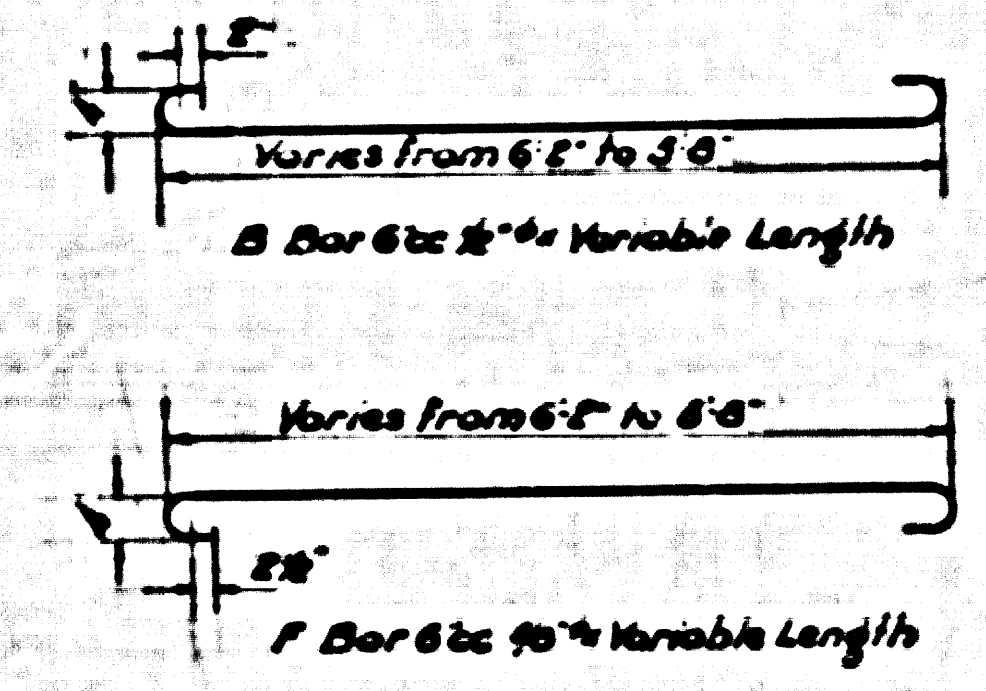
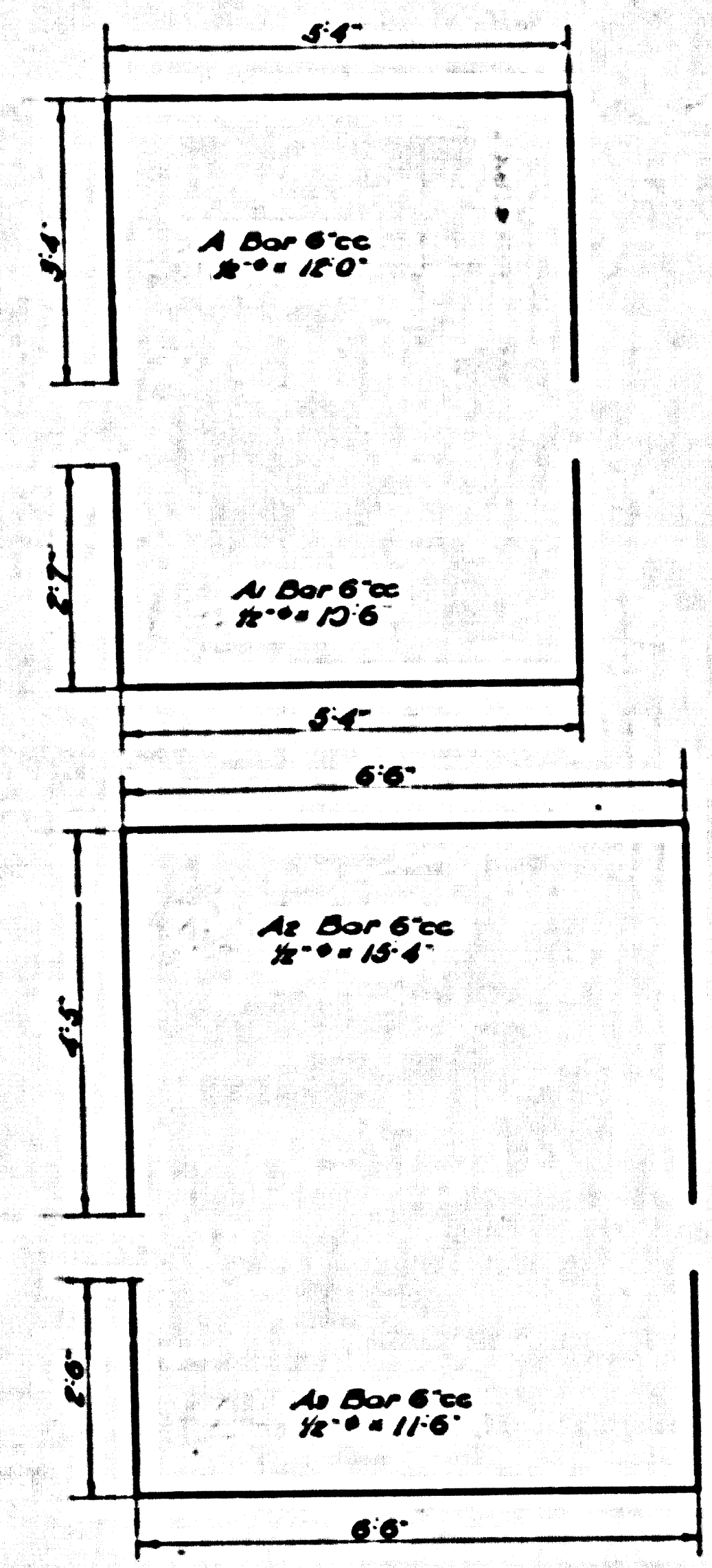
**INDEX**  
 Lines Shown On This Sheet  
 Proceeding From Left To Right  
**MANCHESTER AVE. LATERAL**  
 68<sup>th</sup> ST. LINE



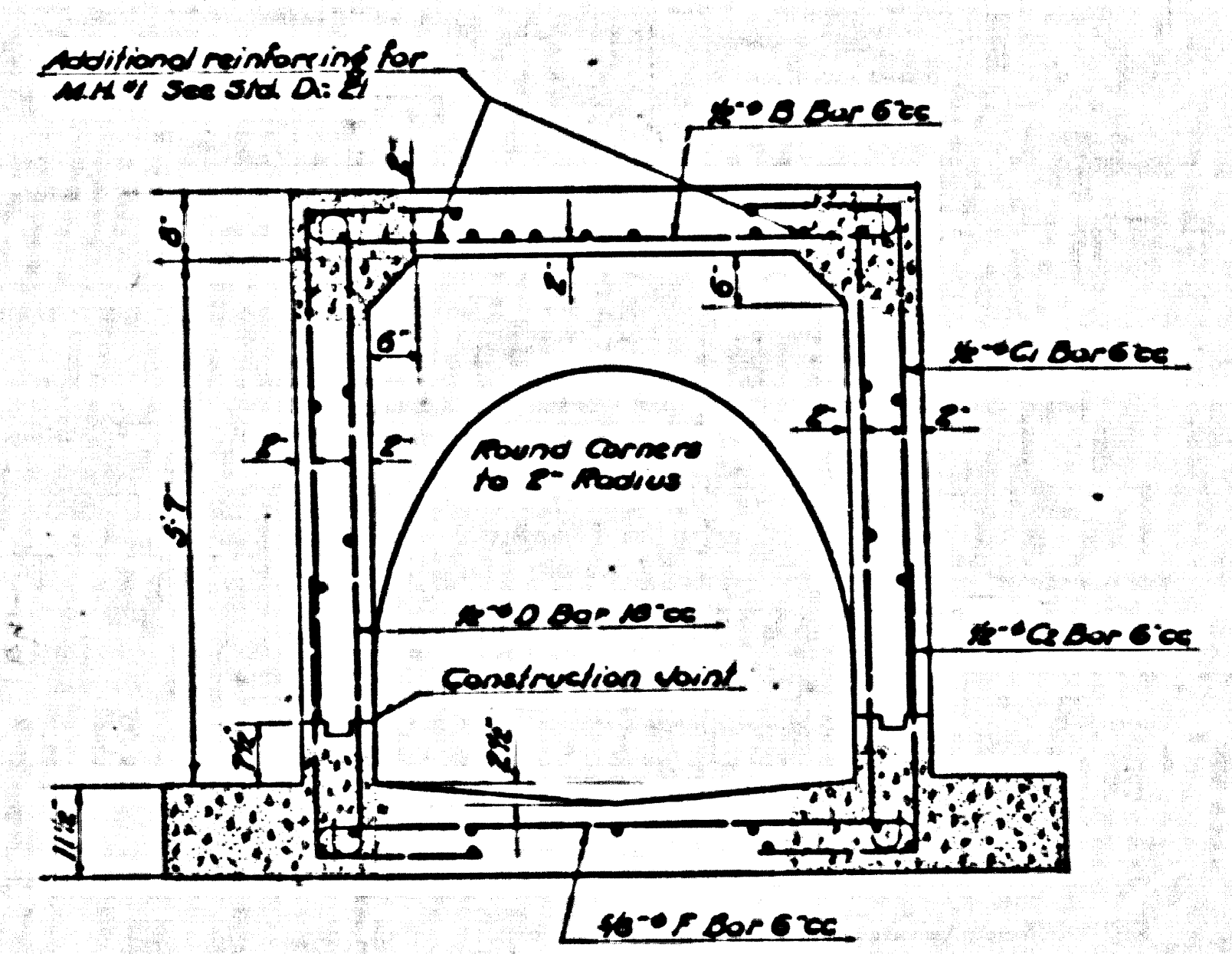
CSB-1727  
 A4 OF A6



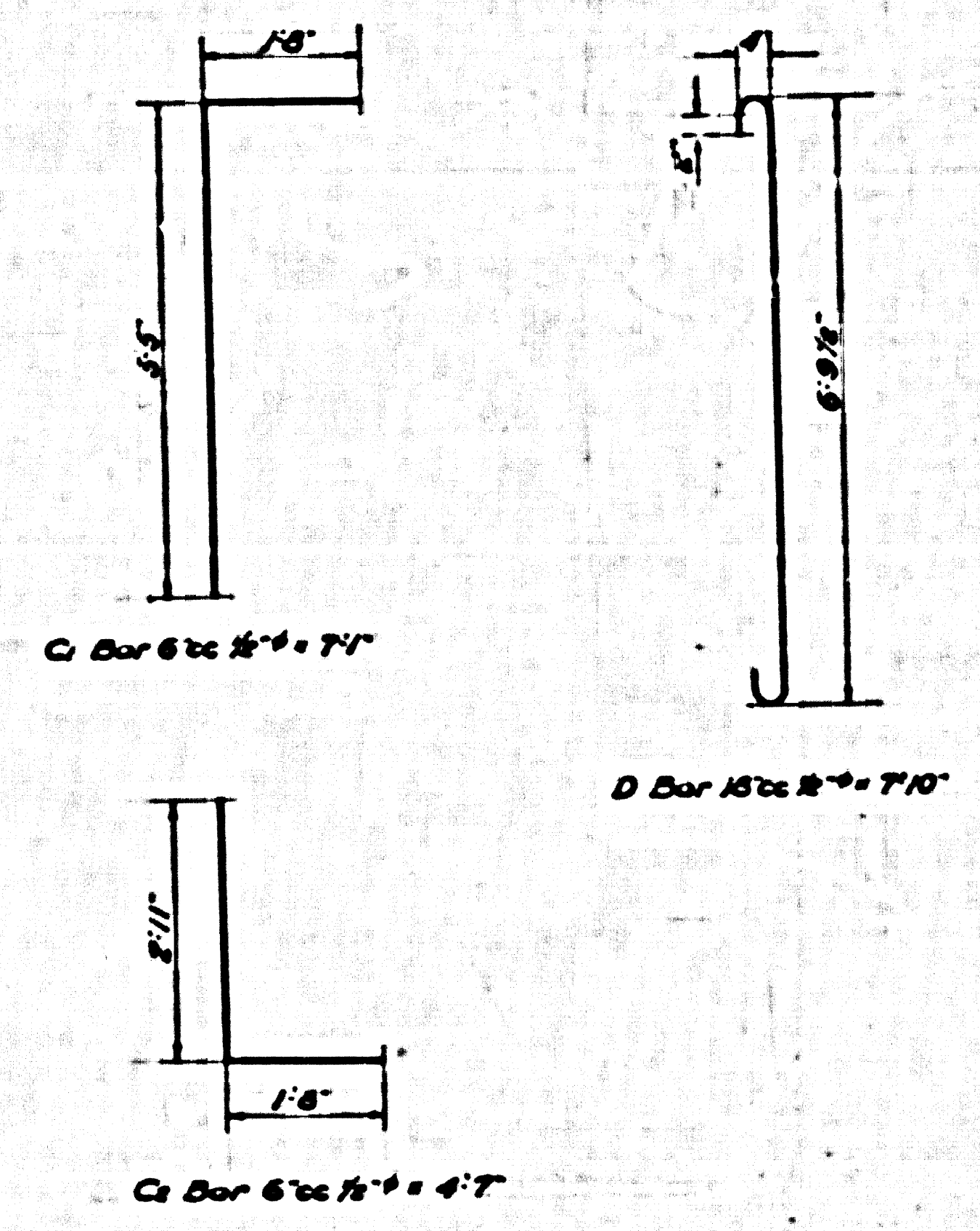
SECTION B-B



SECTION A-A



SECTION C-C



SPECIAL

STRUCTURE

N91

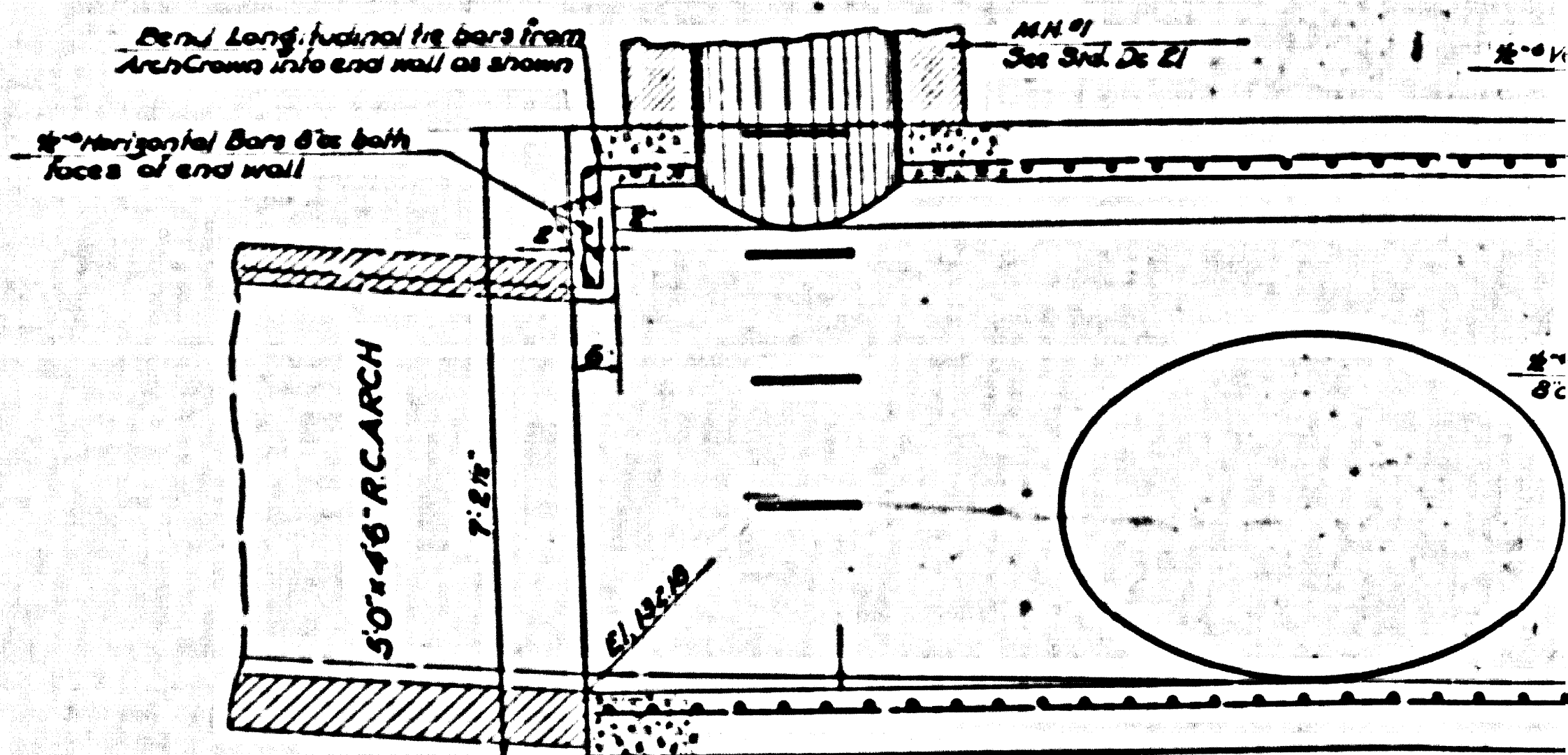
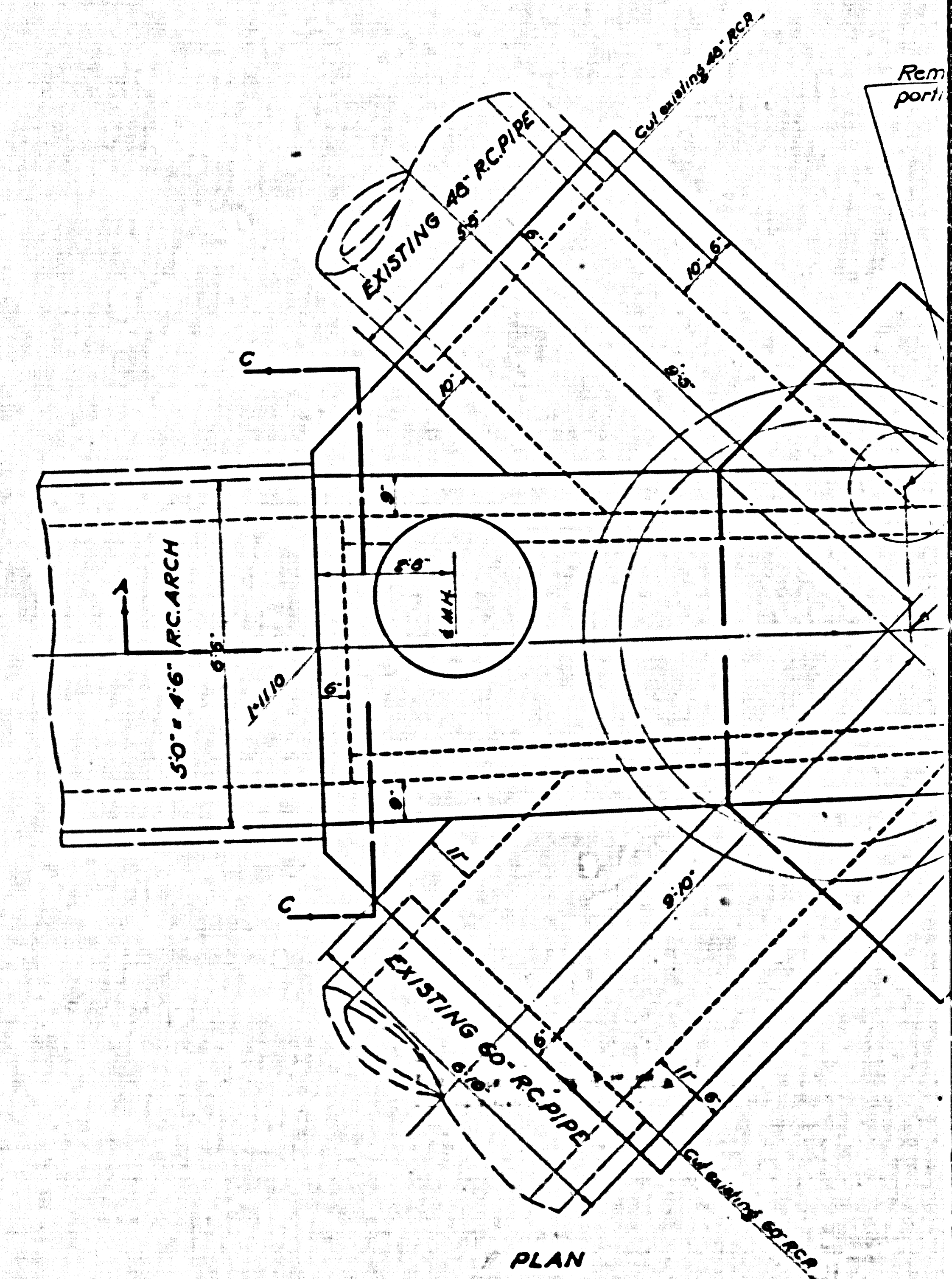
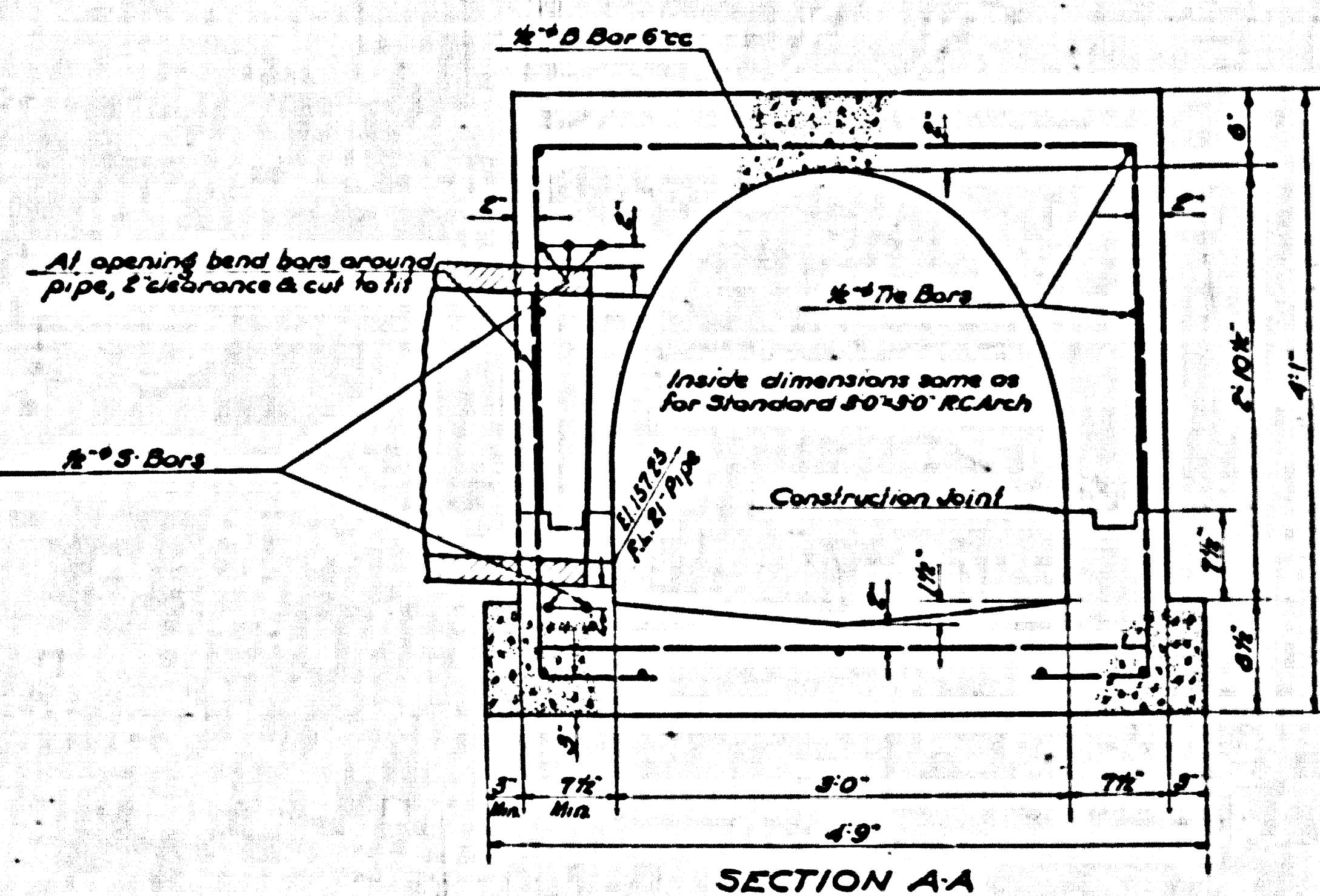
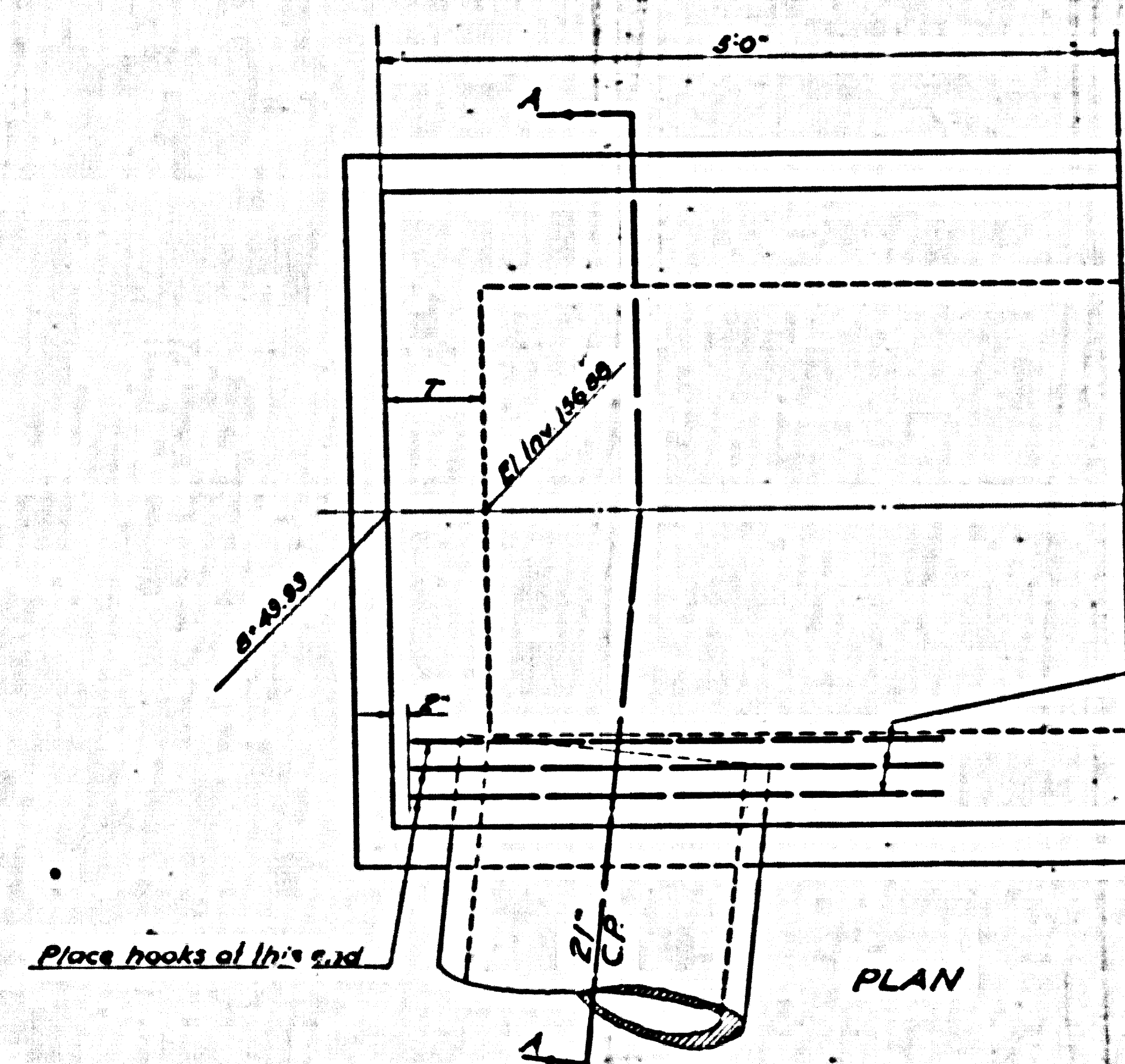
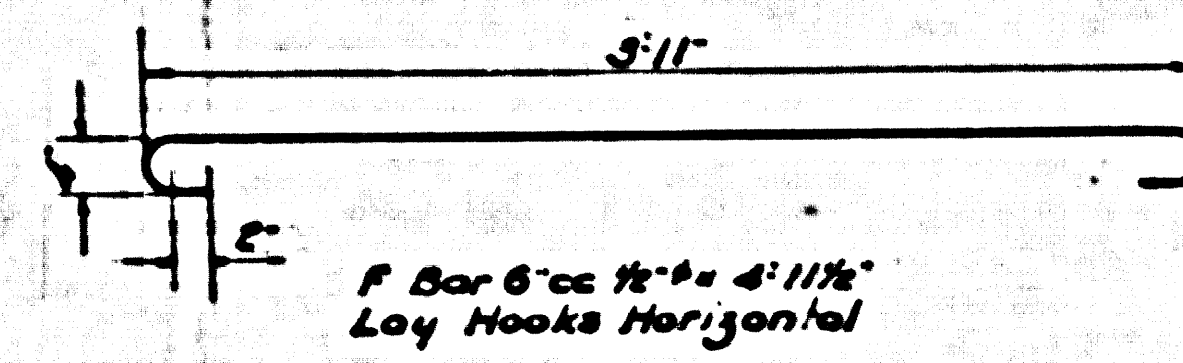
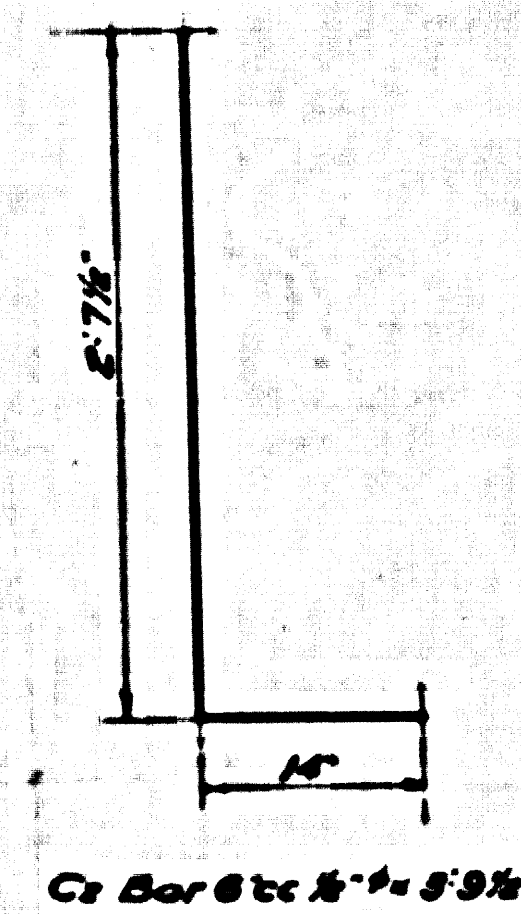
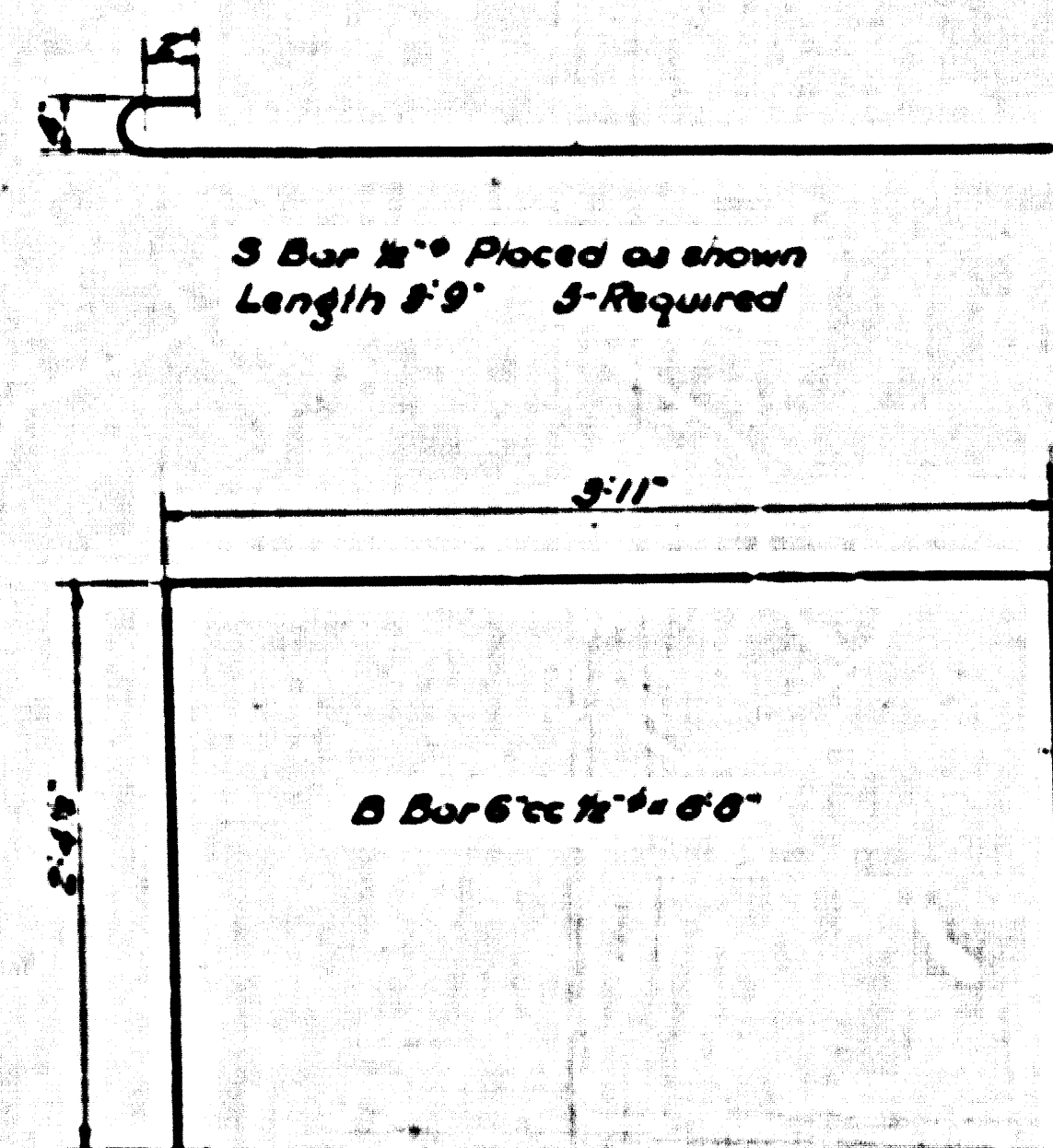
Station 0+96.10  
Scale: 1/4" = 1'-0"

CSB-1727  
A5 OF A6

INDEX  
Lines Shown On This Sheet  
Proceeding From Left To Right  
MANCHESTER AVE. LATER  
63rd ST. LINE

NOTE:  
Elevations are in feet above USGS or mean Sea Level Datum.  
All Reinforced Concrete shall be Class A Concrete unless otherwise specified.  
Dimensions for depth of Reinforcing Steel are from face of concrete to center of bars.  
Reinforcing Bars shall be round deformed bars of intermediate grade steel or rail steel unless otherwise specified and all splices shall be lapped 36 bar diameters.

PC Water 405 APR 1964



SPECIAL

STRUCTURE  
MANCHESTER AVE. LATERAL  
STATION 6+44.93  
Scale 1" = 1'0"

Nº2

CSB-1727  
A6 OF A6

SPECIAL