

COUNTY OF LOS ANGELES
 MAP OF
SAN GABRIEL RIVER PARKWAY
 FROM
 IMPERIAL HIGHWAY
 TO
 FLORENCE AVENUE

COUNTY SURVEYORS MAP NO. B-1731
 SHEET NO. 1 OF 6 SHEETS
 SCALE: 1 INCH = 100 FT.

JOB NUMBER 8499

C. E. ARNOLD - COUNTY SURVEYOR
 SURVEYED AUG - SEPT. 1950

SURVEYED ON REQUEST OF THE REGIONAL
 PLANNING COMMISSION BY LETTER DATED
 SEPT. 12, 1947 & ON REQUEST OF THE ROAD
 COMMISSIONER BY LETTER DATED JUNE 13, 1949,
 UNDER SEC. 79 ORD. 4099 & B.O. DATED JUNE 1, 1938.

BEARINGS ARE BASED ON THE CALIFORNIA
 COORDINATE SYSTEM ZONE 7 PER CHAPTER
 1307 STATUTES 1947. SEE C.S. 8423

F. B. 873-8-14, 117-120
 F. B. 1523-114-116, 226-267

FIELD WORK BY C. A. BENSON
 C. V. CRUMLEY

OFFICE WORK BY C. E. DROWN

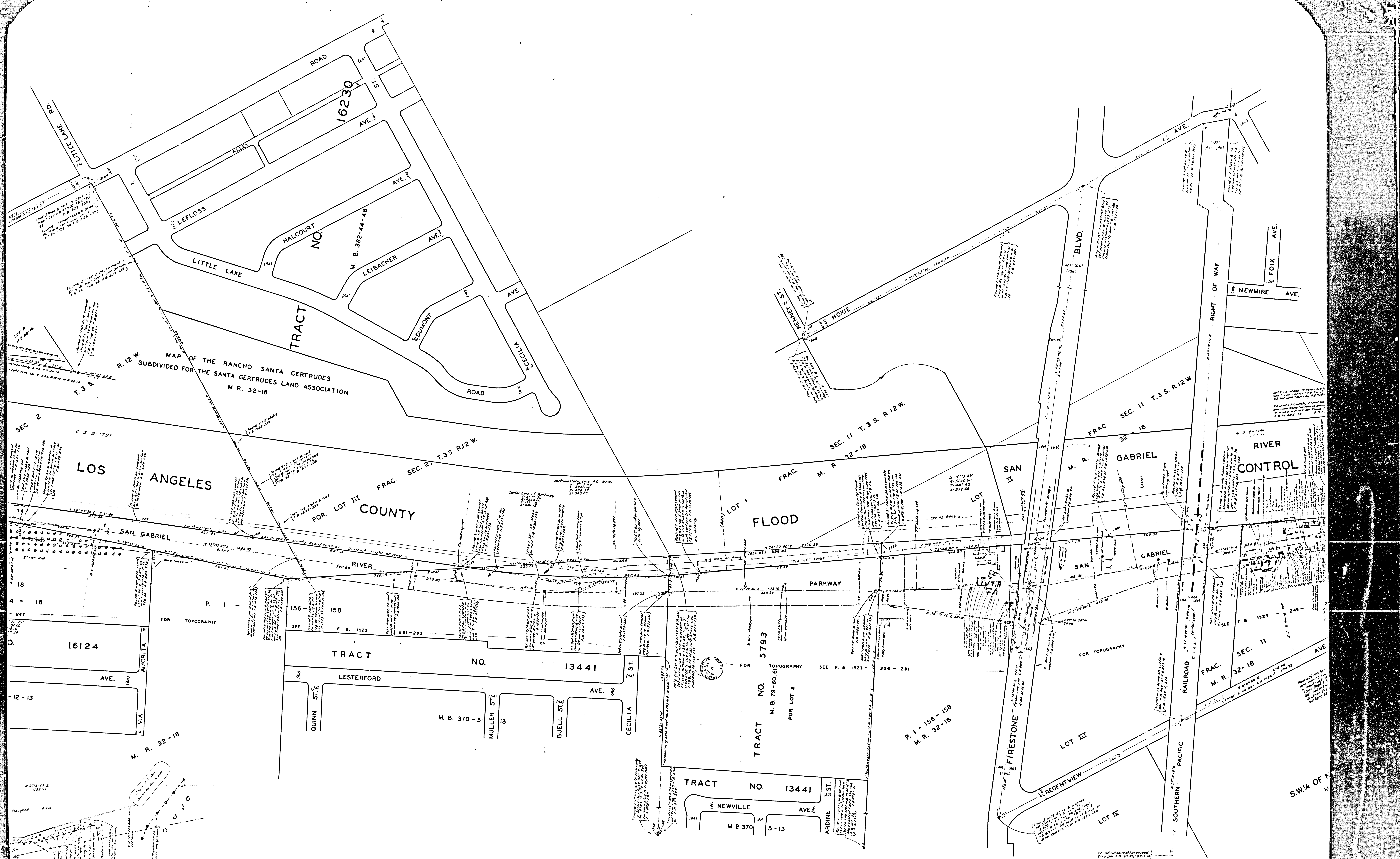
CHECKED BY A. A. ROESER

INDEX 33

CSB-1731-1
 A1 OF A4

SHEET NO. 1 OF 6 SHEETS

COUNTY SURVEYORS MAP NO. B-1731



MAP OF THE RANCHO SANTA GERTRUDES
SUBDIVIDED FOR THE SANTA GERTRUDES LAND ASSOCIATION
M. R. 32-18

LOS ANGELES COUNTY

SEC. 2, T.3S. R.12 W.
POR. LOT III

FLOOD

RIVER CONTROL

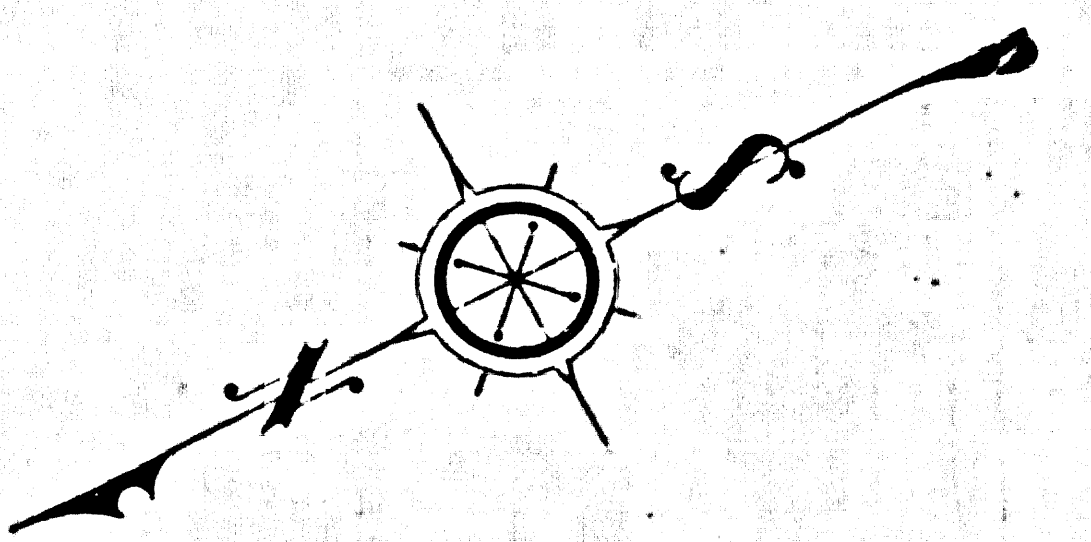
TRACT NO. 13441

TRACT NO. 5793

TRACT NO. 13441

MARGINAL MAP
SCALE: 1" = 50'

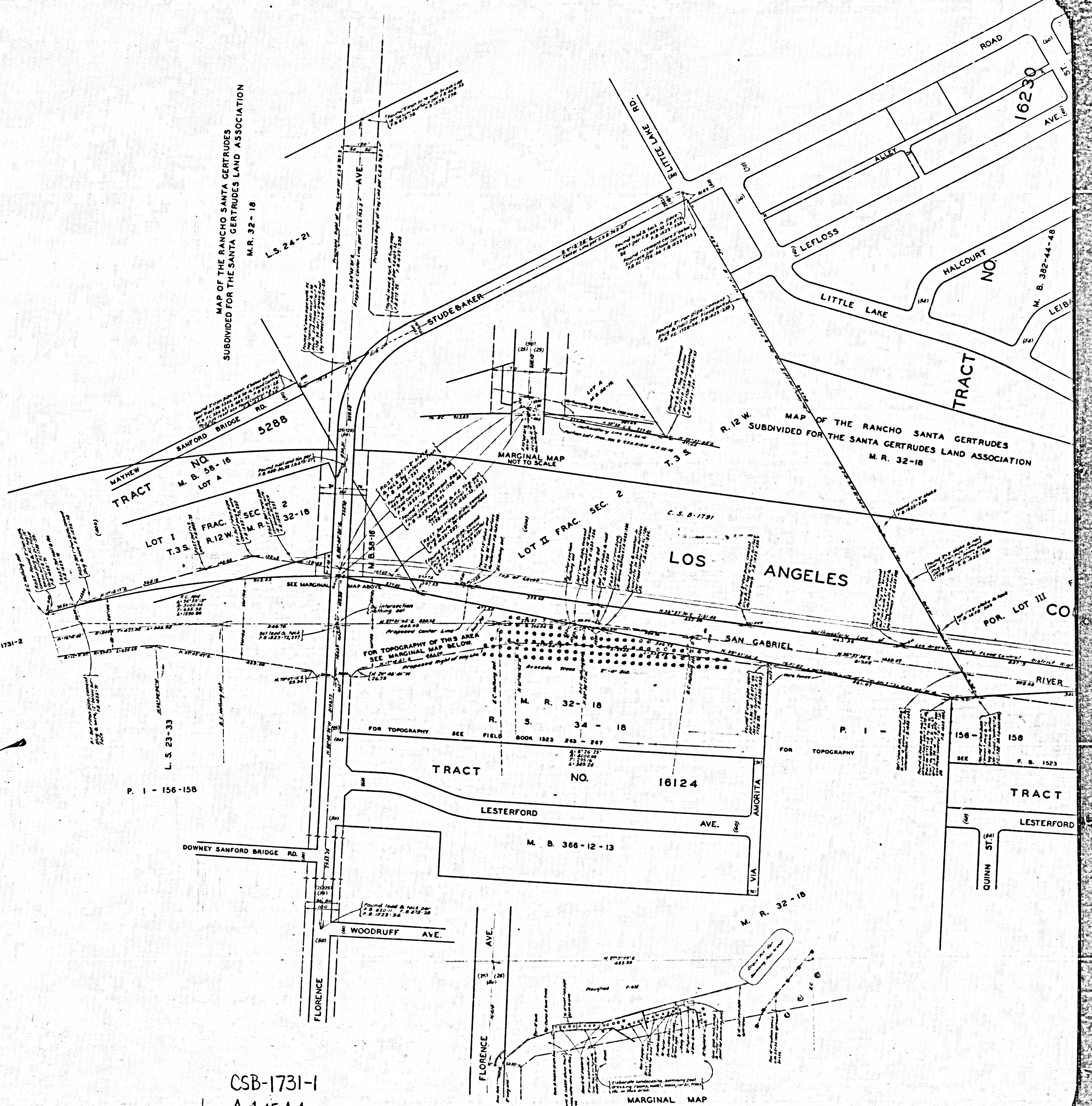
CSB-1731-1
A3 OF A4



CONTINUED ON C.S.B-1731-2

MAP OF THE RANCHO SANTA GERTRUDES
SUBDIVIDED FOR THE SANTA GERTRUDES LAND ASSOCIATION
M.R. 32-18

MAP OF THE RANCHO SANTA GERTRUDES
SUBDIVIDED FOR THE SANTA GERTRUDES LAND ASSOCIATION
M.R. 32-18



CSB-1731-1
A4 of A4

MARGINAL MAP
SCALE: 1" = 30'