

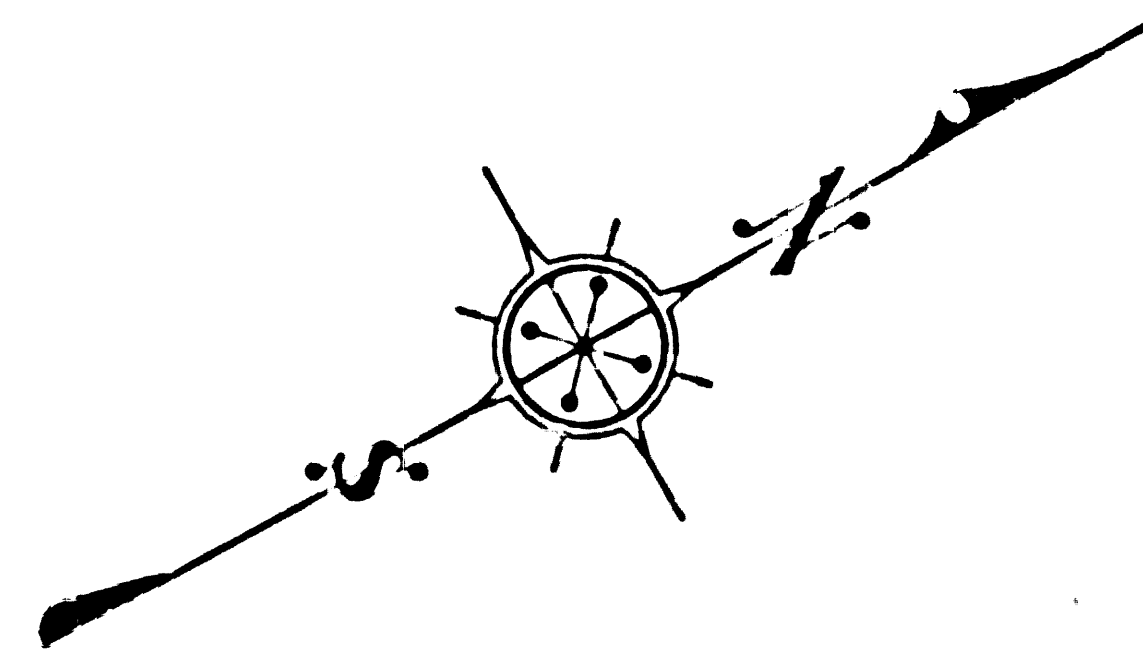
Found 1 1/2" x 3/4" End of Survey  
 Found 1 1/2" in Diameter Iron Rod  
 Date M. B. M. 15th-64  
 10' 10" and 14' 6" in diam  
 F. B. 828-250

Found 6" x 6" concrete Stake  
 Highway Monument  
 F. B. 828-250

Found 48" drill hole in cement  
 24" Post Date M. B. M. 15th-64  
 F. B. 828-250

Found 6" x 6" concrete Stake  
 Highway Monument  
 F. B. 828-250

B.C. - 320-82' 00" of Sierra Highway  
 on C.S. 8045-5 Found 48" drill  
 hole in cement 24" Post Date  
 M. B. M. 15th-64 F. B. 828-250

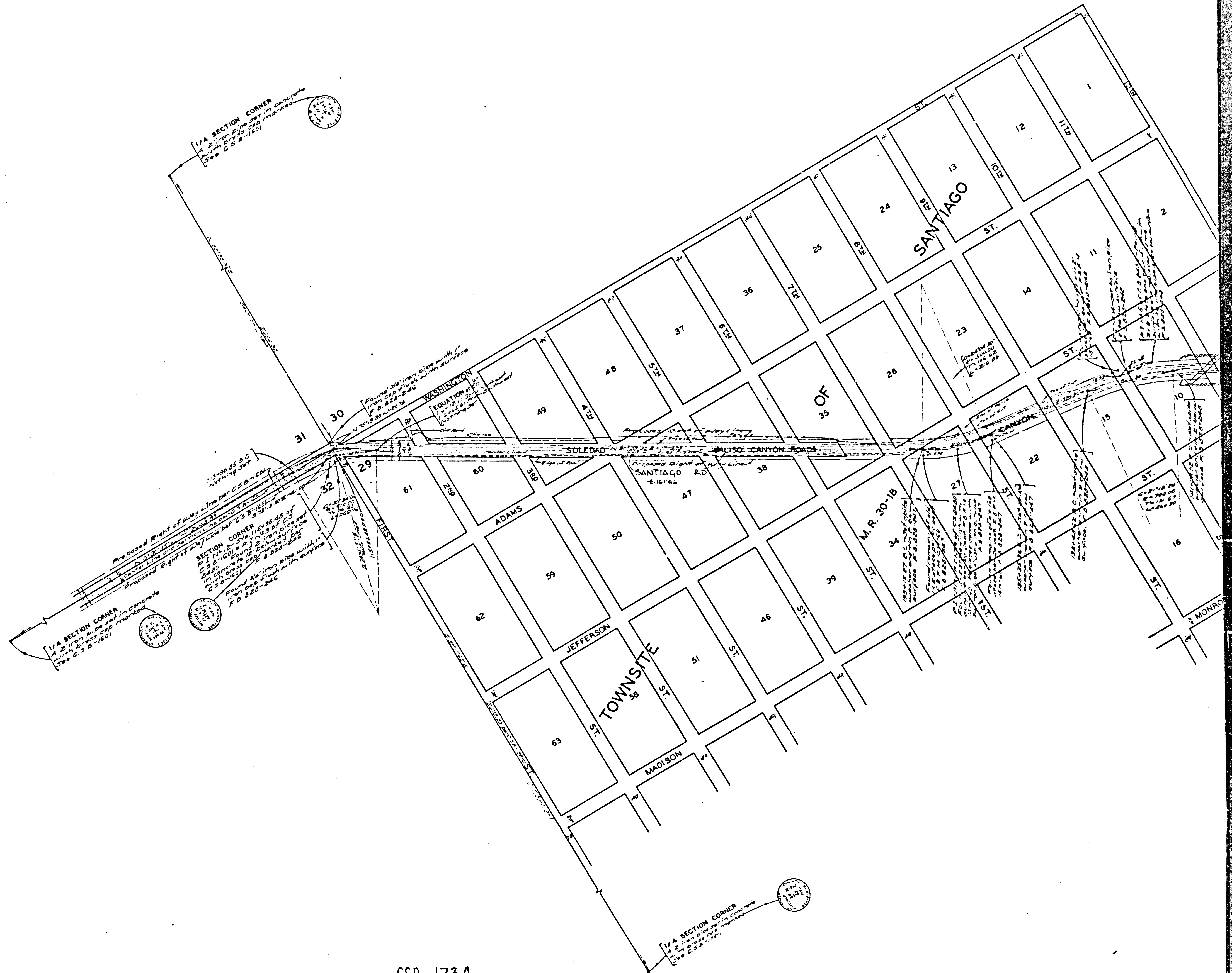


SANTIAGO MAP OF ROAD  
**SOLEIDAD CANYON ROAD**  
 FROM  
 S. W. CORNER OF SECTION 29-T.5N-R.12W.-S.B.M.  
 TO  
**SIERRA HIGHWAY**

COUNTY SURVEYORS MAP NO B-1734  
 SCALE - 1 INCH = 100 FT.

JOB NUMBER 3058  
 ALFRED JONES - COUNTY SURVEYOR  
 SURVEYED . . . . . OCT. 1941  
 BEARINGS ARE BASED ON THE BEARING OF  
 WEST LINE OF SECTION 32-T.5N-R.12W.  
 AS SHOWN ON C.S. B-1601  
 F. B. 828-245-258  
 FIELD WORK BY . . . . . E. A. ROSECRANS  
 OFFICE WORK BY . . . . . K. R. MAPHERSON  
 C. W. COX  
 CHECKED BY . . . . . K. R. MAPHERSON  
 INDEX NO 64

CSB-1734  
 A1 OF A2



CSB-1734  
A2 OF A2