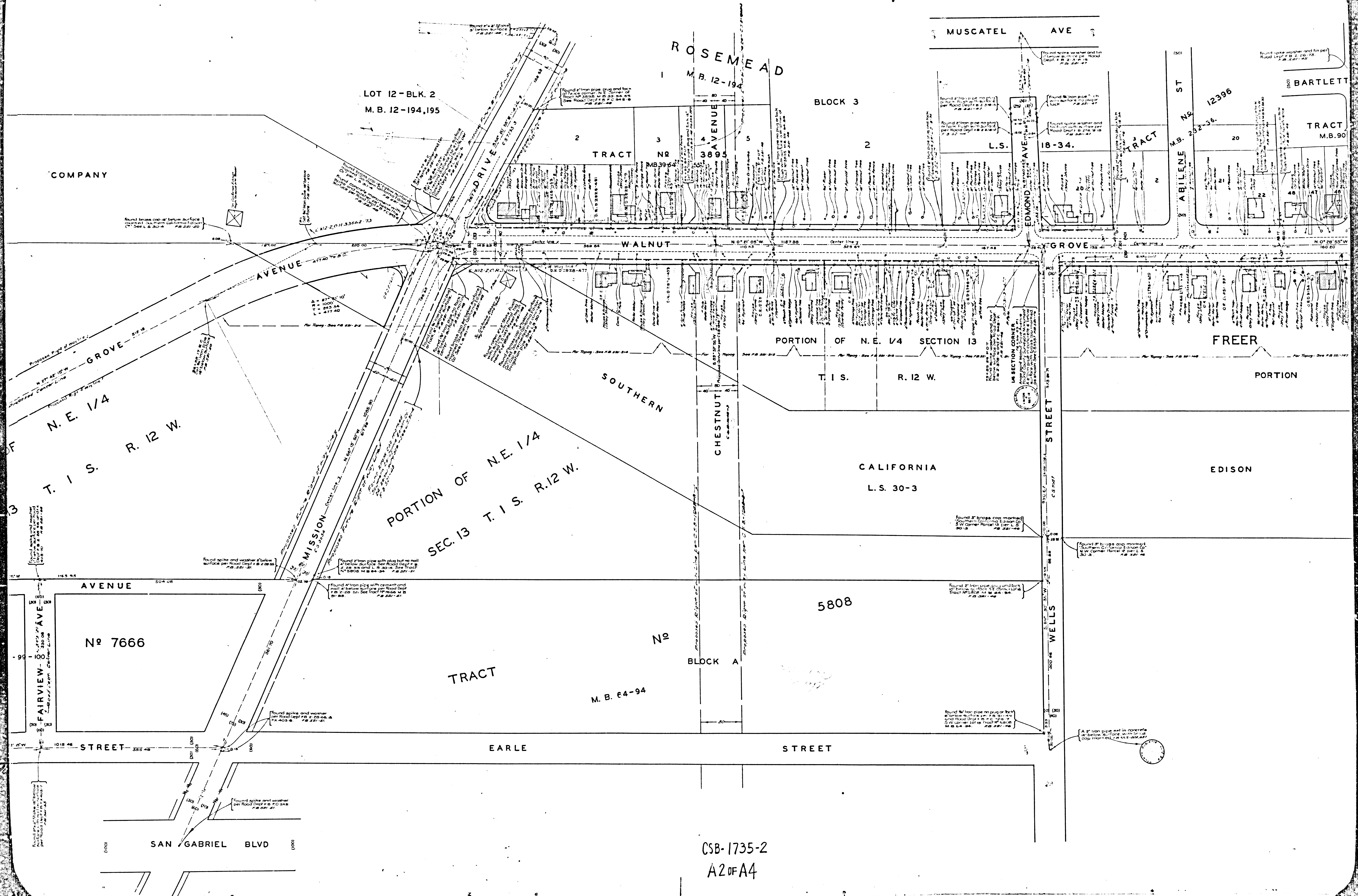



MAP OF
WALNUT GROVE AVENUE
 FROM
GARVEY AVENUE
 TO
HUNTINGTON DRIVE
 COUNTY SURVEYORS MAP NO. B-1735
 SHEET NO. 2 OF 4 SHEETS
 SCALE - 1 INCH = 50 FEET.

JOB NUMBER - 7150
 ALFRED JONES - COUNTY SURVEYOR
 SURVEYED JUNE 1939-OCT. 1941.
 SURVEYED UNDER INSTRUCTIONS OF THE
 BOARD OF SUPERVISORS PER ORDER DATED
 MARCH 21, 1932
 BEARINGS ARE BASED ON THE BEARING OF
 WALNUT GROVE AVENUE, PER C.S.B. 106.
 F.B. 521-1-148,209,244
 FIELD WORK BY ANHELLSTROM.
 W.A.MILLER. INEX 44
 OFFICEWORK BY HUMPHIGGS.
 CHECKED BY A.AROESER.

CSB-1735-2
 A1 OF A4



CSB-1735-2
A2 OF A4

AVENUE

SOUTHERN

CALIFORNIA

EDISON

COMPANY

L.S.30-4.

SECTION CORNER
Found brass cap at below surface
marked Southern California Edison
Co. per L.S. 30-4. # 2821-22

WLY LINE L. S. 30-4

ELY LINE LOTS 2 & 3 - M.B. 12-191

VIEW TRACT

L. S. 11-4

Found 2" iron pipe (plug or lock)
at below surface per L.S. 30-4
2821-22

Found brass cap at below surface
marked Southern California Edison
Co. per L.S. 30-4. # 2821-22

Found brass cap at below surface
marked Southern California Edison
Co. per L.S. 30-4. # 2821-22

Found brass cap at below surface
marked Southern California Edison
Co. per L.S. 30-4. # 2821-22

Found brass cap at below surface
marked Southern California Edison
Co. per L.S. 30-4. # 2821-22

Found brass cap at below surface
marked Southern California Edison
Co. per L.S. 30-4. # 2821-22

N^o 5602

B. 55-100.

M.R. 54-15.

RAILROAD
C.S. 65100

VIEW TRACT

M.B. 12-191

WALNUT

PORTION OF N. E. 1/4

SEC. 13 T. 1 S. R. 12 W.

GROVE

N. 0° 32' 50" W. 8736.93

AVENUE

AVENUE

AVENUE

WILLARD

EASTERLY LINE TR N^o 7666-M.B. 91-99,100

TRACT

M.B. 91-99-100.

N^o 7666

L.R. 411-1-A.

PACIFIC

O.R.M. 13200-333.

BALDY

SOUTHERN

GRAND

AVENUE

EARLE

N. 0° 28' 10" W. 1015.46

STREET

SAN GABRIEL

BLVD

SAN GABRIEL

BLVD

CSB-1735-2
A3 of A4

BURTON AVENUE

L.S. 30-5

M. R. 54-15

GOETZ TRACT
M.B. 55-43.
LOT-A

L.S. 30-5

M. R. 54-15.

TRACT N^o 5602
M.B. 55-100.

M. R. 54-15.

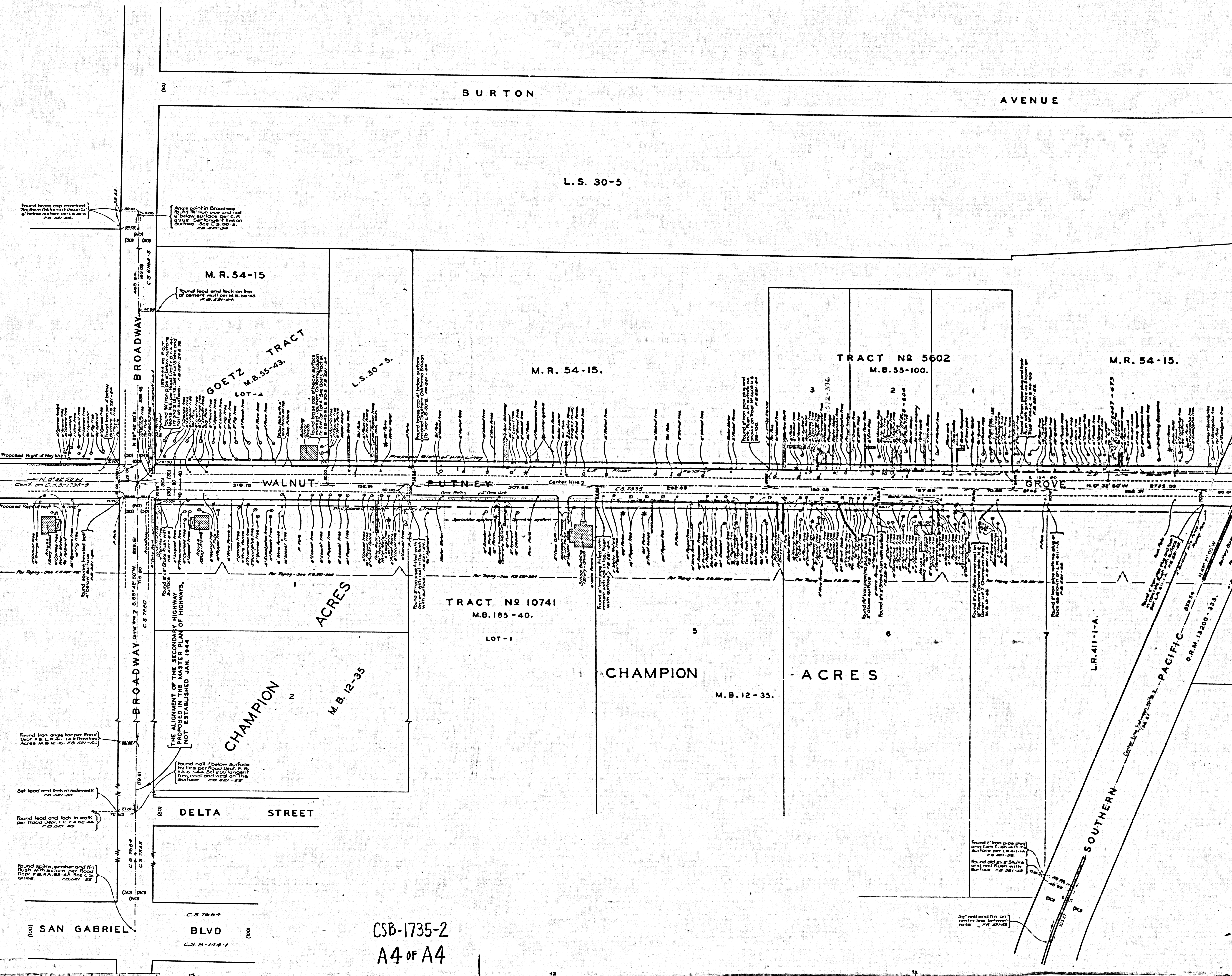
ACRES

TRACT N^o 10741
M.B. 185-40.
LOT-1

CHAMPION ACRES
M. B. 12-35.

L.R. 411-1-A.

SOUTHERN PACIFIC
O.R.M. 19200-233.



Found brass cap marked
Southern California Division
at below surface per S 28-45
78 27-34

Angle point in Broadway
found 1/2" iron pipe and nail
at below surface per C.S.
bearing. Set longest ties on
surface. See C.S. 7664
78 27-34

Found lead and lock on top
of cement wall per S 28-45
78 27-34

Found brass cap of P.O.T.
found in lot A. See C.S. 7664
bearing. Set longest ties on
surface. See C.S. 7664
78 27-34

Found brass cap of P.O.T.
found in lot A. See C.S. 7664
bearing. Set longest ties on
surface. See C.S. 7664
78 27-34

Found 1/2" iron pipe and nail
at below surface per C.S.
bearing. Set longest ties on
surface. See C.S. 7664
78 27-34

Found 1/2" iron pipe and nail
at below surface per C.S.
bearing. Set longest ties on
surface. See C.S. 7664
78 27-34

Found 1/2" iron pipe and nail
at below surface per C.S.
bearing. Set longest ties on
surface. See C.S. 7664
78 27-34

Found 1/2" iron pipe and nail
at below surface per C.S.
bearing. Set longest ties on
surface. See C.S. 7664
78 27-34

Found 1/2" iron pipe and nail
at below surface per C.S.
bearing. Set longest ties on
surface. See C.S. 7664
78 27-34

Found 1/2" iron pipe and nail
at below surface per C.S.
bearing. Set longest ties on
surface. See C.S. 7664
78 27-34

Found 1/2" iron pipe and nail
at below surface per C.S.
bearing. Set longest ties on
surface. See C.S. 7664
78 27-34

Found 1/2" iron pipe and nail
at below surface per C.S.
bearing. Set longest ties on
surface. See C.S. 7664
78 27-34

Found 1/2" iron pipe and nail
at below surface per C.S.
bearing. Set longest ties on
surface. See C.S. 7664
78 27-34

Found 1/2" iron pipe and nail
at below surface per C.S.
bearing. Set longest ties on
surface. See C.S. 7664
78 27-34

Found 1/2" iron pipe and nail
at below surface per C.S.
bearing. Set longest ties on
surface. See C.S. 7664
78 27-34

Found 1/2" iron pipe and nail
at below surface per C.S.
bearing. Set longest ties on
surface. See C.S. 7664
78 27-34

Found 1/2" iron pipe and nail
at below surface per C.S.
bearing. Set longest ties on
surface. See C.S. 7664
78 27-34

Found iron angle bar per Road
Dept. P. S. L. N. 411-A & Downward
Acres M. B. 12-35. 78 27-34

Set lead and lock in sidewalk
78 27-34

Found lead and lock in walk
per Road Dept. P. S. L. N. 411-A &
Downward. 78 27-34

Found spike, washer and tin
nail with surface per Road
Dept. P. S. L. N. 411-A & Downward
Acres M. B. 12-35. 78 27-34

Found nail at below surface
per Road Dept. P. S. L. N. 411-A &
Downward. Set longest ties on
surface. See C.S. 7664
78 27-34

Set nail and tin on
center line between
roads. 78 27-34

(000) SAN GABRIEL BLVD (000)
C.S. 7664
C.S. 7664-144-1

CSB-1735-2
A4 OF A4