

COUNTY SURVEYORS MAP NO. B-1735 SHEET NO. 4 OF 4



MAP OF
WALNUT GROVE AVENUE
 FROM
GARVEY AVENUE
 TO
HUNTINGTON DRIVE
 COUNTY SURVEYORS MAP NO. B-1735
 SHEET NO. 4 OF 4 SHEETS
 SCALE - 1 INCH = 50 FEET

JOB NUMBER 7150

ALFRED JONES - COUNTY SURVEYOR
 SURVEYED JUNE 1939 - OCT. 1941

SURVEYED UNDER INSTRUCTIONS OF THE
 BOARD OF SUPERVISORS PER ORDER DATED
 MARCH 21, 1932

BEARINGS ARE BASED ON THE BEARING OF
 WALNUT GROVE AVENUE PER C.S.B.-108

F. B. 521-1-148; 209-244

FIELD WORK BY A. N. HELLSTROM
 W. A. MILLER
 OFFICE WORK BY H. U. HIGGINS
 C. W. COX INDEX 44

CHECKED BY A. A. ROESER

REVISED JULY, 1947 - C. W. COX

COUNTY SURVEYORS MAP NO. B-1735 SHEET NO. 4 OF 4

CSB-1735-4
A1 OF A4



Los Angeles County (Eaton Wash) Flood Control District
SUNNY TRACT
SUNNY SUBDIVISION
BLOCK 16
ESTATE
LOT 1
LOT 2
LOT 3
LOT 4
LOT 17
LOT 18

THIS ALIGNMENT ADOPTED BY COUNTY SURVEYOR JULY, 1947

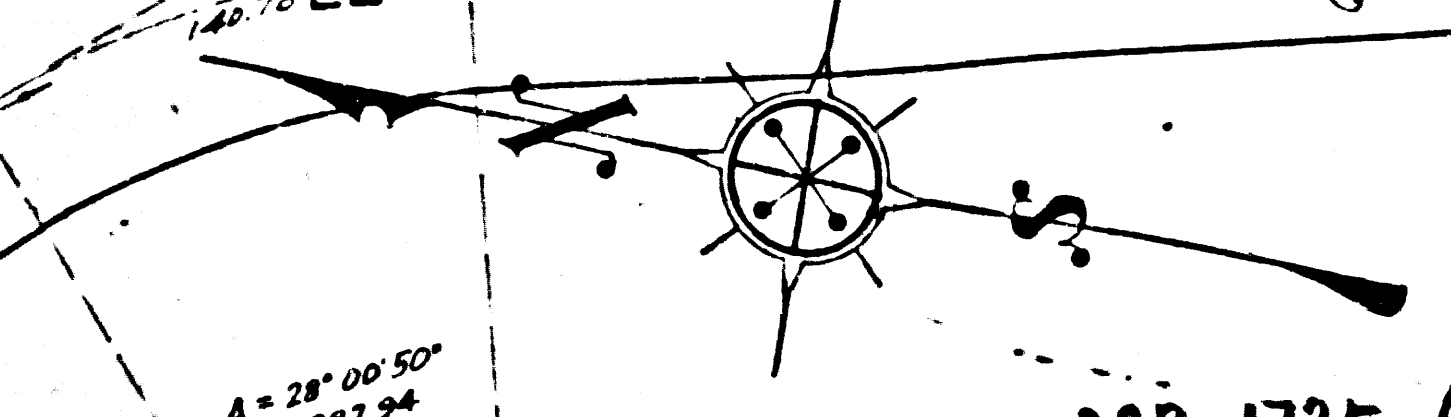
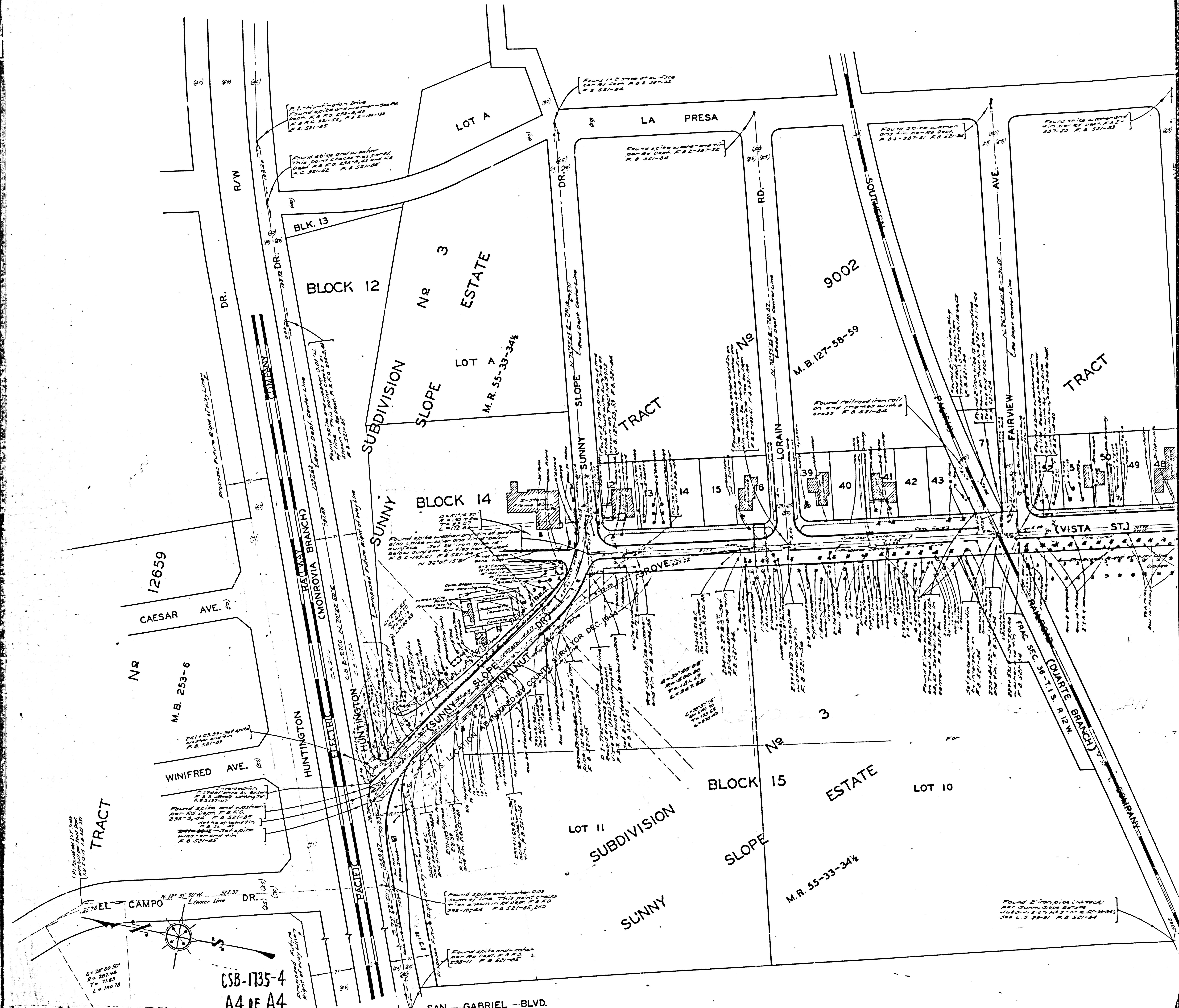
THIS ALIGNMENT ADOPTED BY COUNTY SURVEYOR JULY, 1947

SAN GABRIEL BLVD.
EASTERLY BOUNDARY CITY OF SAN MARINO

SAN GABRIEL BLVD.
EASTERLY BOUNDARY CITY OF SAN MARINO

CSB-1735-4
A2 OF A4

See 2016 purchase and 2017
resubdivision. Same same
notes apply in the line of title
are. F.B. 521-116



CSB-1735-4
A4 of A4

$R = 287.94'$
 $T = 71.83'$
 $L = 140.78'$

SAN - GABRIEL - BLVD.

Found 2" iron pipe water
at 10' depth
at 15' depth
at 20' depth
at 25' depth
at 30' depth
at 35' depth
at 40' depth
at 45' depth
at 50' depth
at 55' depth
at 60' depth
at 65' depth
at 70' depth
at 75' depth
at 80' depth
at 85' depth
at 90' depth
at 95' depth
at 100' depth
at 105' depth
at 110' depth
at 115' depth
at 120' depth
at 125' depth
at 130' depth
at 135' depth
at 140' depth
at 145' depth
at 150' depth
at 155' depth
at 160' depth
at 165' depth
at 170' depth
at 175' depth
at 180' depth
at 185' depth
at 190' depth
at 195' depth
at 200' depth
at 205' depth
at 210' depth
at 215' depth
at 220' depth
at 225' depth
at 230' depth
at 235' depth
at 240' depth
at 245' depth
at 250' depth
at 255' depth
at 260' depth
at 265' depth
at 270' depth
at 275' depth
at 280' depth
at 285' depth
at 290' depth
at 295' depth
at 300' depth
at 305' depth
at 310' depth
at 315' depth
at 320' depth
at 325' depth
at 330' depth
at 335' depth
at 340' depth
at 345' depth
at 350' depth
at 355' depth
at 360' depth