

Superior Court Case No. 482757
 Suit for Condemnation
 Filed Dec. 30, 1942.
 The County of Los Angeles, Plaintiff,
 vs.
 Fred H. Bixby Co, et al, Defendants.
 Suit covers Parcels 3-5 and 3-6 only.
 Order for Immediate Possession, rendered on January 13th, 1943.

Final Order of Condemnation in favor of Plaintiff as to Parcel 3-5 rendered Jan 27, 1944.
 E. 63-5, OR 18994-132

Final Order of Condemnation in favor of Plaintiff as to Parcel 3-6 rendered Jan 27, 1944.
 E. 64-220, OR 20569-218

MAP SHOWING
PROPOSED DRAINAGE CHANNEL
 OF
LOS CERRITOS DRAINAGE SYSTEM
 FROM
BELLFLOWER BOULEVARD
 TO
ANAHEIM STREET.
 COUNTY SURVEYORS MAP NO B-742
 SCALE 1" = 200 FT.

JOB NUMBER 6341.

ALFRED JONES - COUNTY SURVEYOR
 SURVEYED JANUARY 1942

SURVEYED UNDER INSTRUCTIONS OF THE
 BOARD OF SUPERVISORS PER ORDER DATED
 MAY 16th 1939.
 BEARINGS ARE BASED ON THE BEARING OF
 WOODRUFF AVE. PER C.S. B-63a.

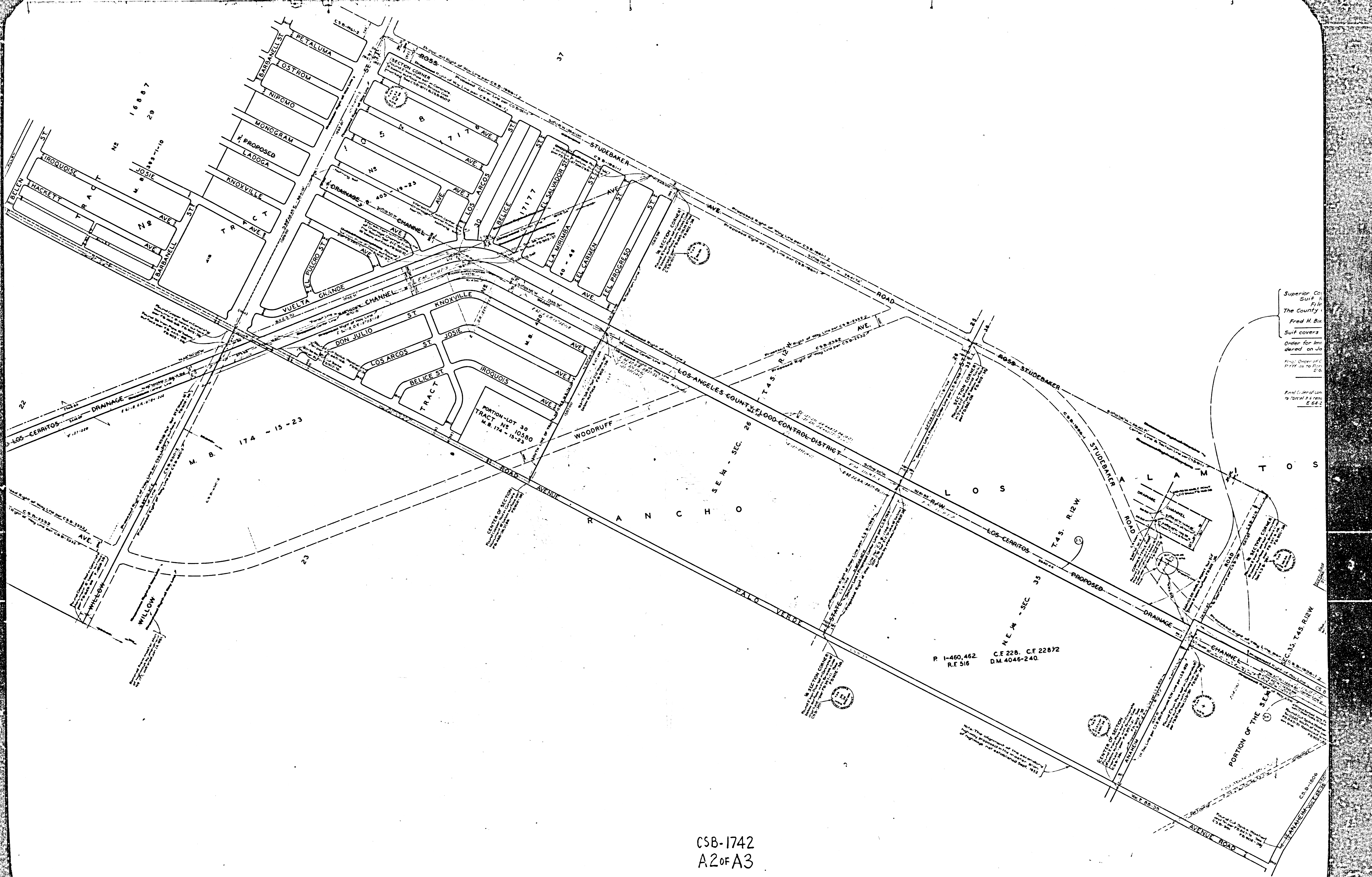
F.B. 902-33-39.

FIELD WORK BY: S.E. BUTLER
 K.R. MSPHERSON
 OFFICE WORK BY: R.W. MALLISTER
 L.C. WILSON
 CHECKED BY: K.R. MSPHERSON

INDEX 31

Revised July, 1944 - L.D. PRICE.
 Revised Oct. 1947 - C.J. GALL
 Revised Sept 1952 - R.W. M.A.

CSB-1742
 A1 OF A3



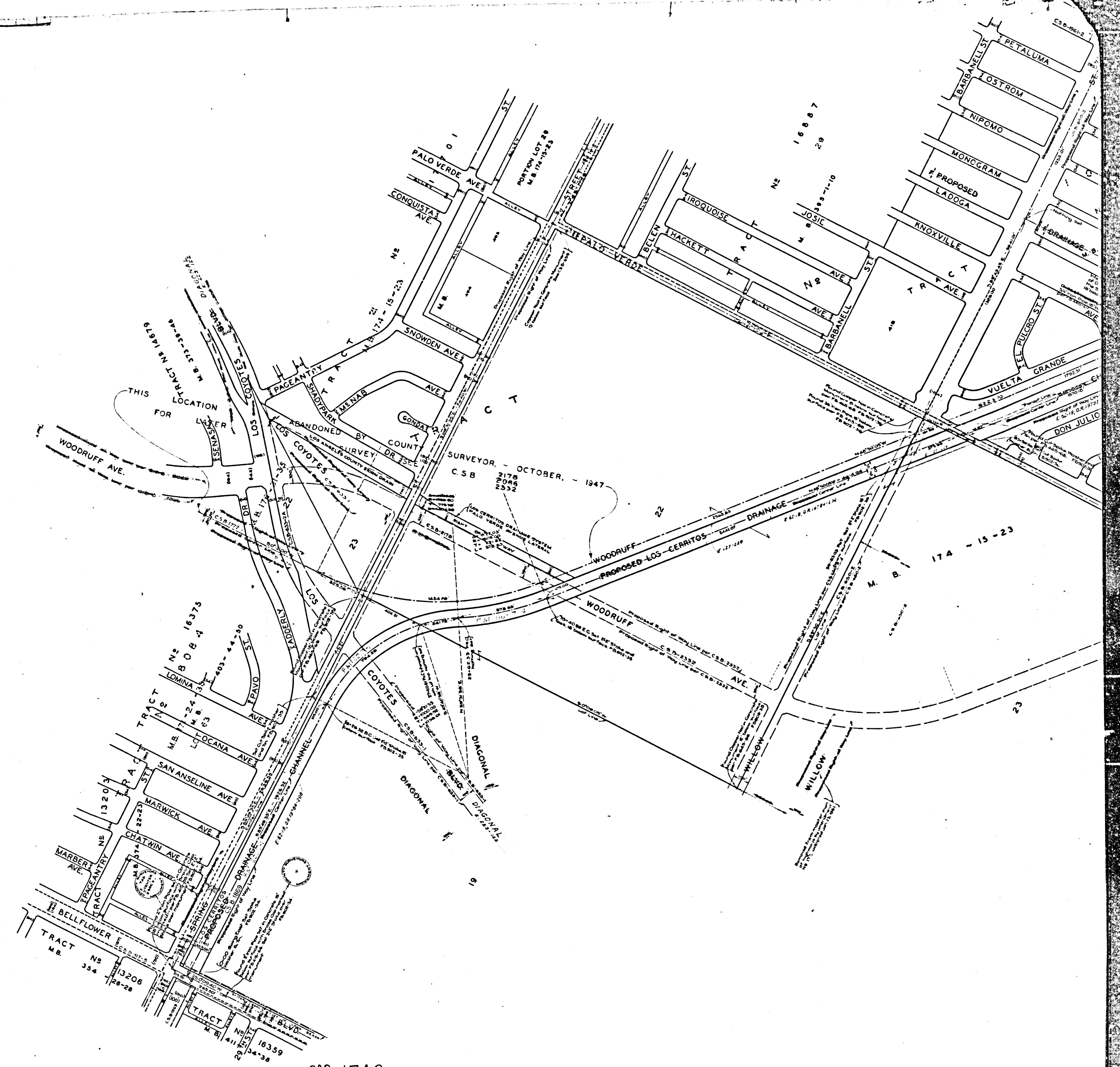
Superior Co.
 Suit in
 File
 The County
 Fred H. Bix
 Suit covers
 Order for Impr.
 dered on Jo
 Final Order of
 P. 1-460,462
 R.F. 516
 E 642

P. 1-460,462
 R.F. 516
 C.F. 228, C.F. 228 1/2
 D.M. 4046-240.

CSB-1742
 A2 OF A3

CONVULS 2000002 WVB NS B-1145

CONVULS 2000002 WVB NS B-1145



CSB-1742
A3 of A3