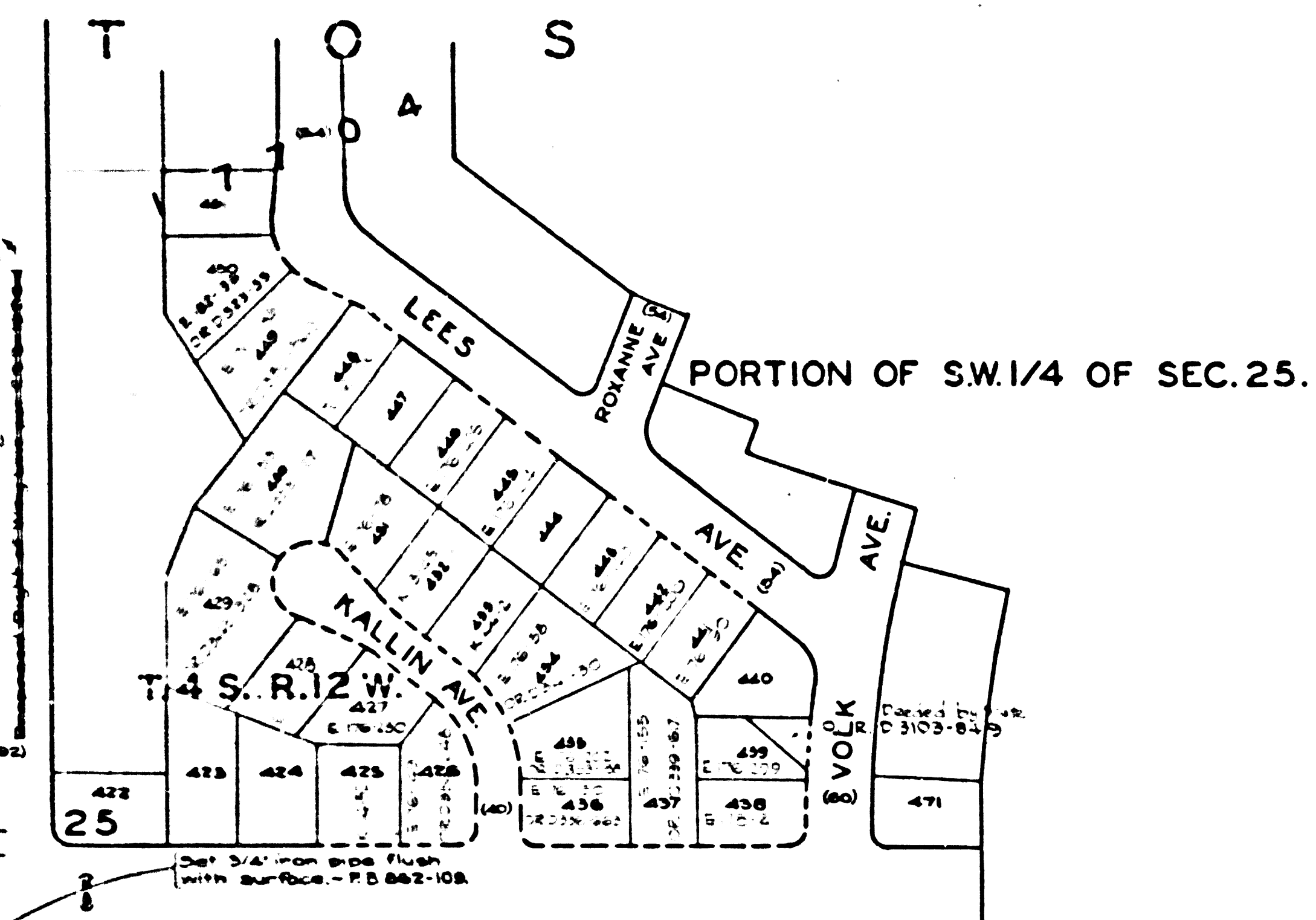
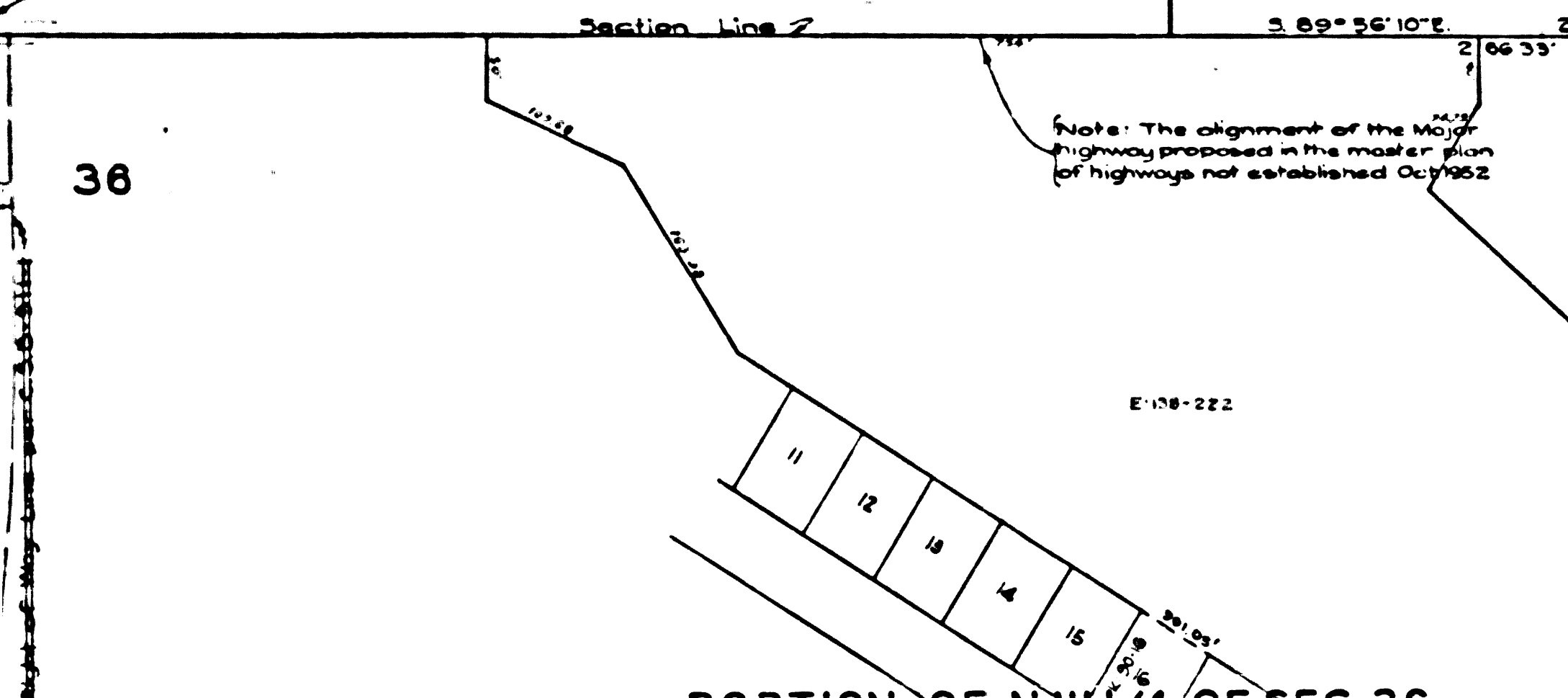


1/4 SECTION CORNER  
 Found C.S. monument 8' below surface  
 per F.B. 43-36 - F.B. 62-117

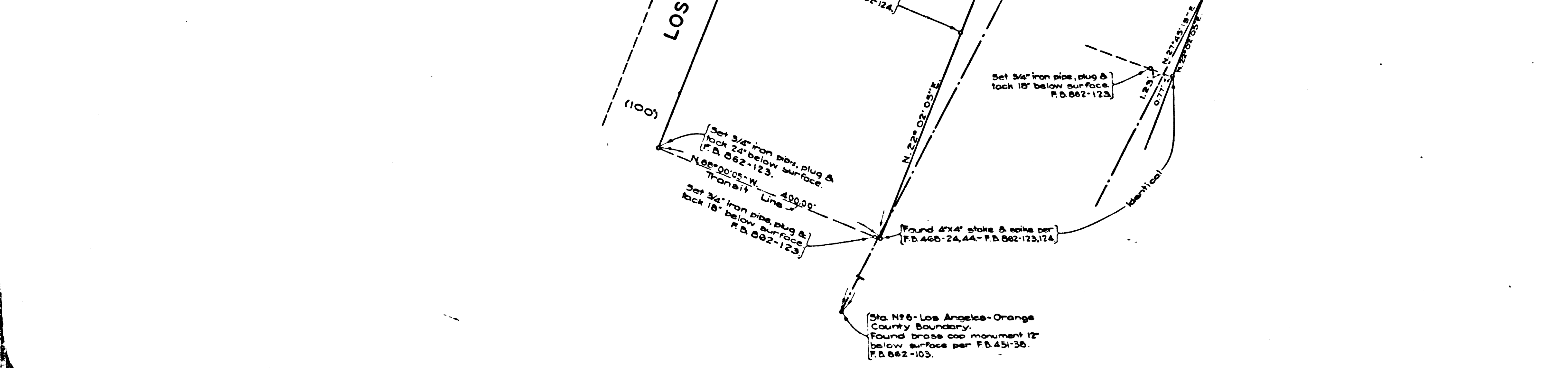


PORTION OF SW 1/4 OF SEC. 25.



PORTION OF N.W. 1/4 OF SEC. 36.

1/4 SECTION CORNER  
 Found C.S. monument 18' below surface  
 per F.B. 49-37 - F.B. 62-115



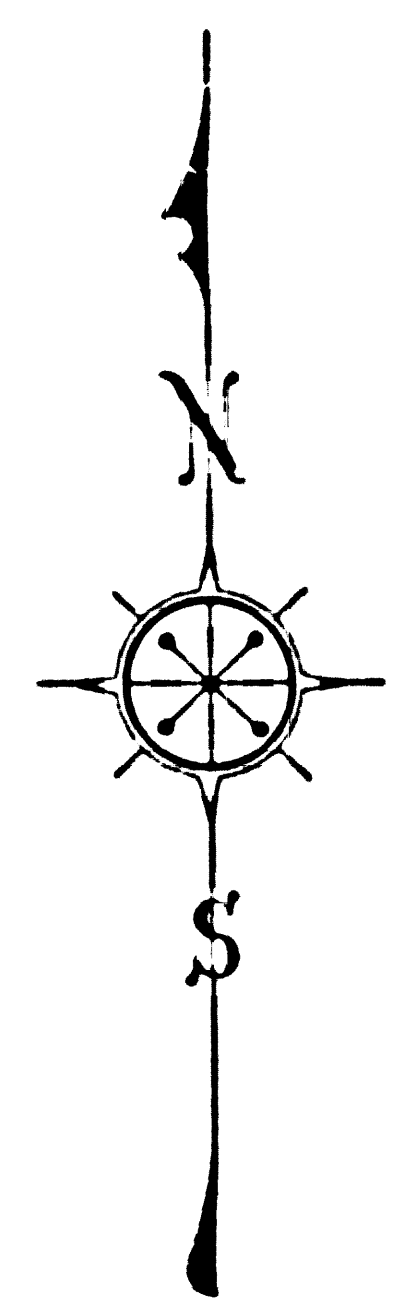
See MBE Witness Corner  
 Los Angeles-Orange Co. Boundary  
 Found County Surveyor's monument  
 12' below surface per F.B. 52-167  
 F.B. 62-107

See N 97  
 Found in iron casing 4.5' below surface  
 a bottom of channel per F.B. 52-167  
 & at Standard County Surveyor's  
 monument in the casing 2.6' below surface  
 and a standard County Surveyor's monument  
 over same 12' below surface. Monument  
 marked.

Calculated intersection with  
 County Surveyor's right-of-way  
 Found monument in  
 (F.B. 62-108)  
 Found monument in  
 (F.B. 62-108)

C O U N T Y

O R A N G E



INDEX 31

COUNTY OF LOS ANGELES  
 MAP OF  
**STATE STREET**  
 FROM  
**LAKEWOOD BOULEVARD**  
 TO  
**STUDEBAKER ROAD**  
 COUNTY SURVEYORS MAP N° B-1749.  
 SCALE - 1 INCH = 100 FT.

JOB NUMBER 6310

ALFRED JONES COUNTY SURVEYOR  
 SURVEYED SEPT. OCT. 1941 AND MAY, 1946.  
 SURVEYED ON REQUEST OF THE REGIONAL  
 PLANNING COMMISSION UNDER RULE 21, ORD.  
 929 BY LETTER DATED JAN. 2, 1941 AND AS  
 AUTHORIZED BY THE BOARD OF SUPERVISORS  
 IN THEIR ORDER OF JUNE 1, 1938.

BEARINGS ARE BASED ON LOS ANGELES  
 COUNTY COORDINATE SYSTEM, LAMBERT  
 GRID, CENTRAL MERIDIAN 118° 20' W (SEC. 5, 9423)

F.B. 62-99-148

FIELD WORK BY..... F. J. McNEAL  
 G. G. PORTER  
 OFFICE WORK BY..... R. W. HALLISTER  
 K. R. McPHERSON  
 D. A. WHITE  
 CHECKED BY..... K. R. McPHERSON

Revised July 30, 1947 - J. B. Price

NOTE - A Standard County Surveyor's  
 monument is a 3" iron pipe set in  
 concrete, with brass cap marked

Revised Nov. 1952. R. W. HALLISTER

CSB-1749  
 A1 OF A5

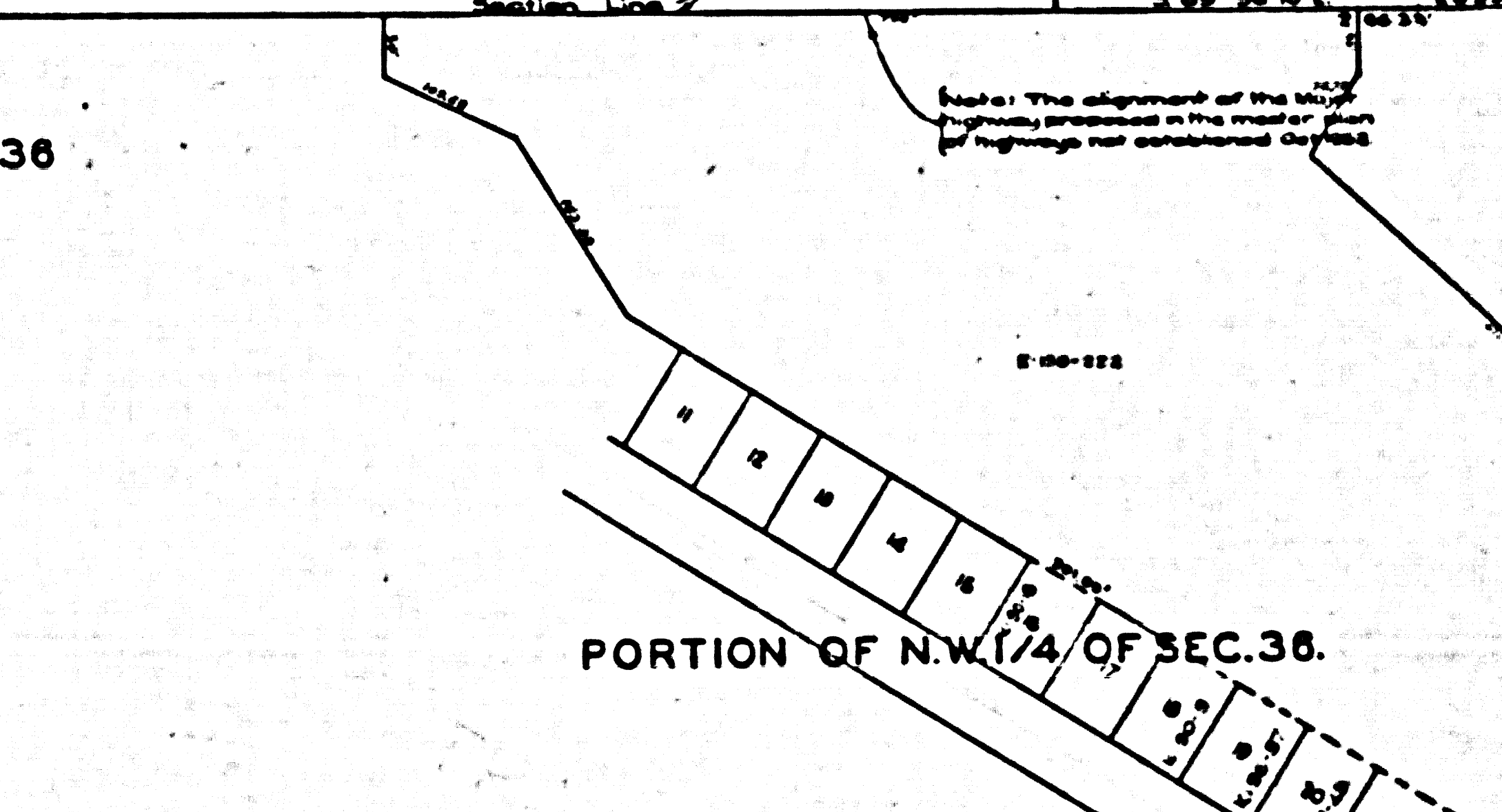
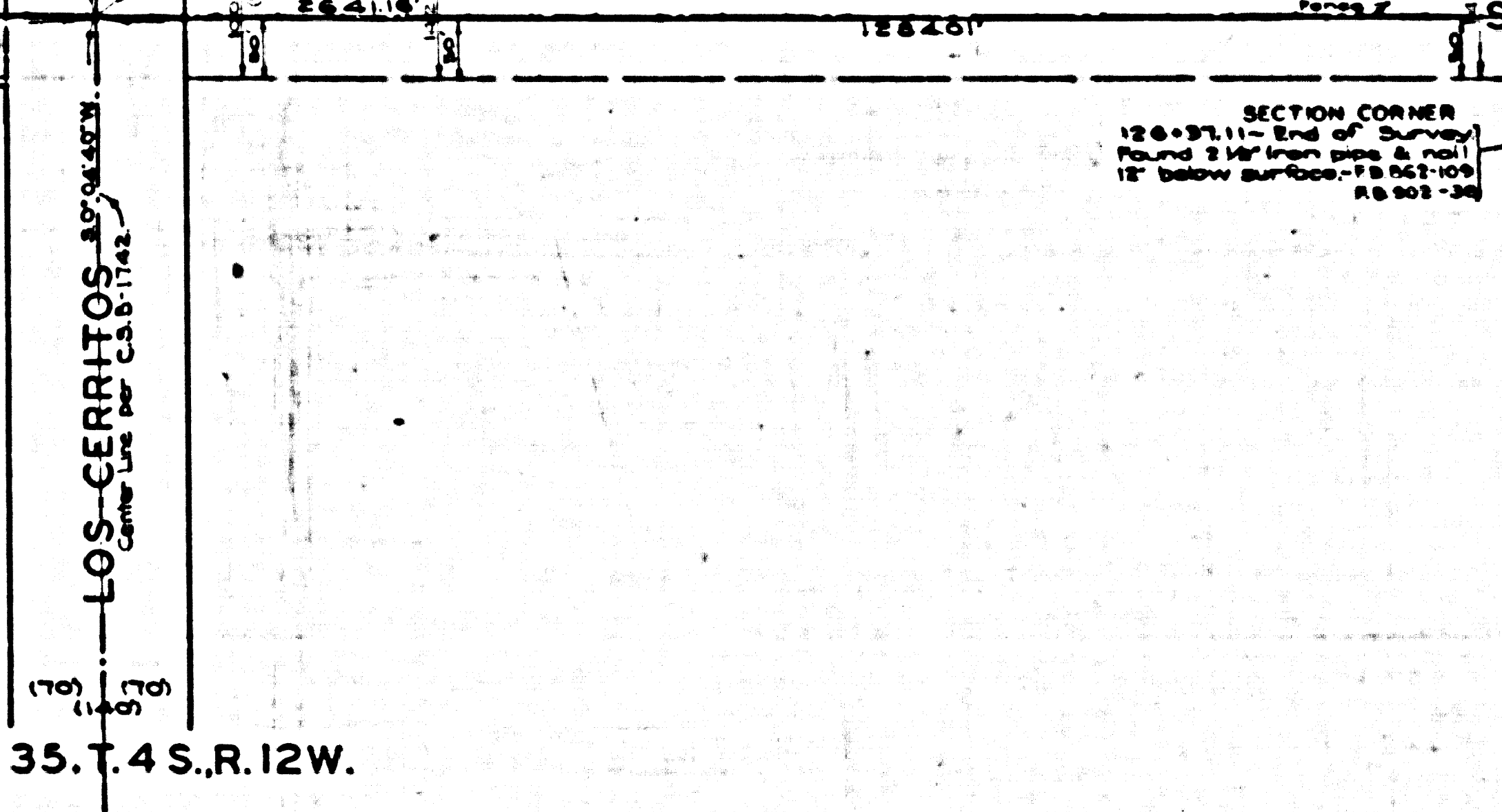
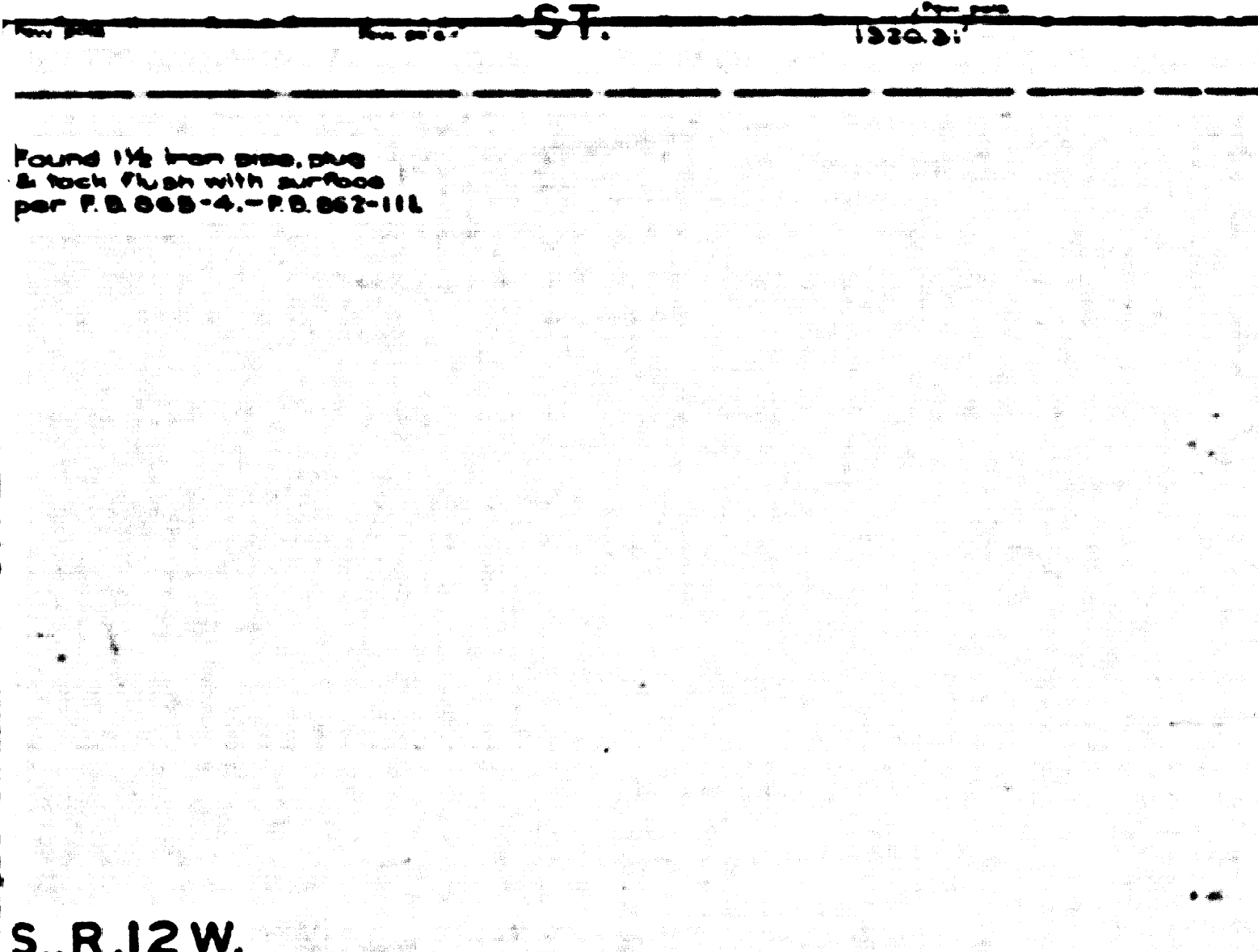
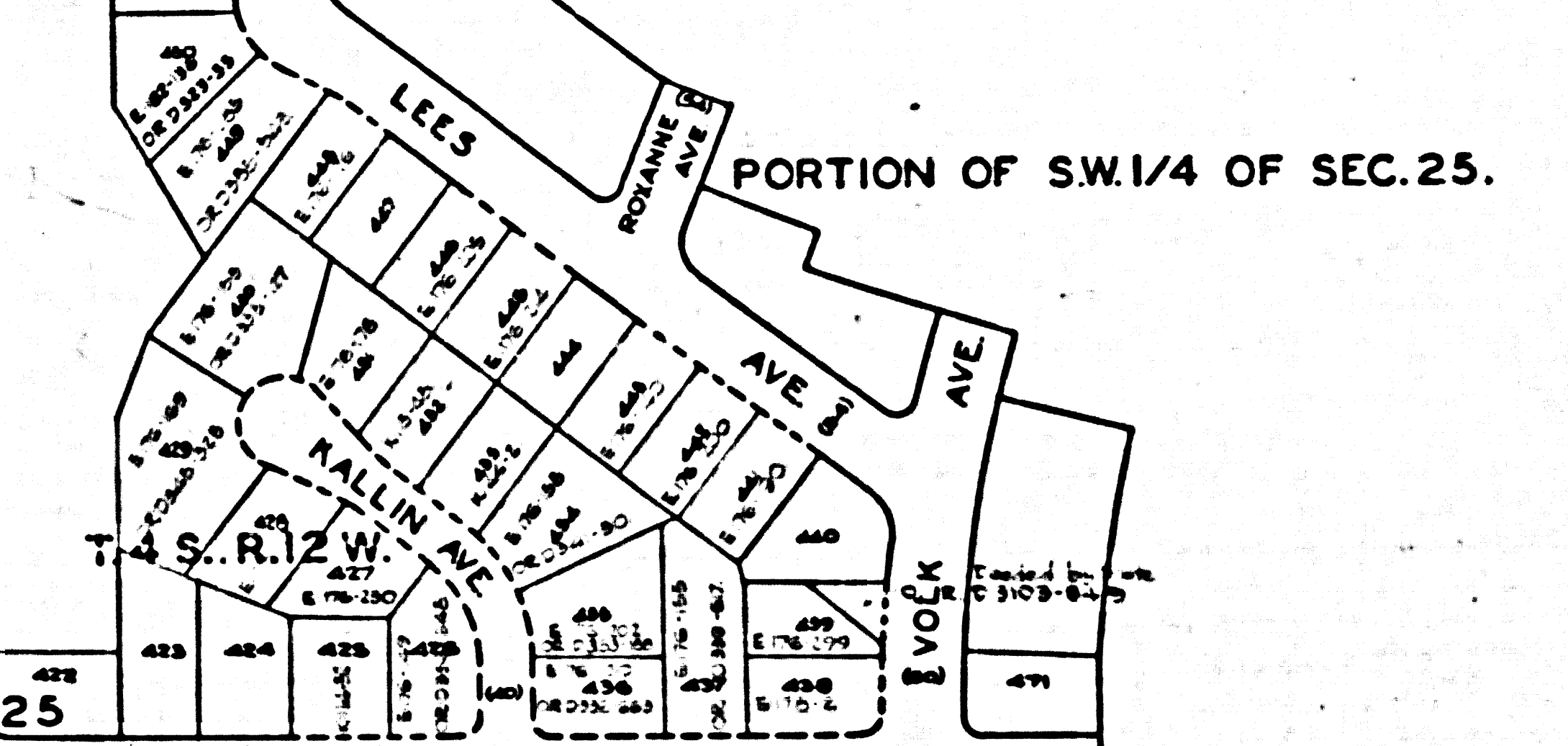
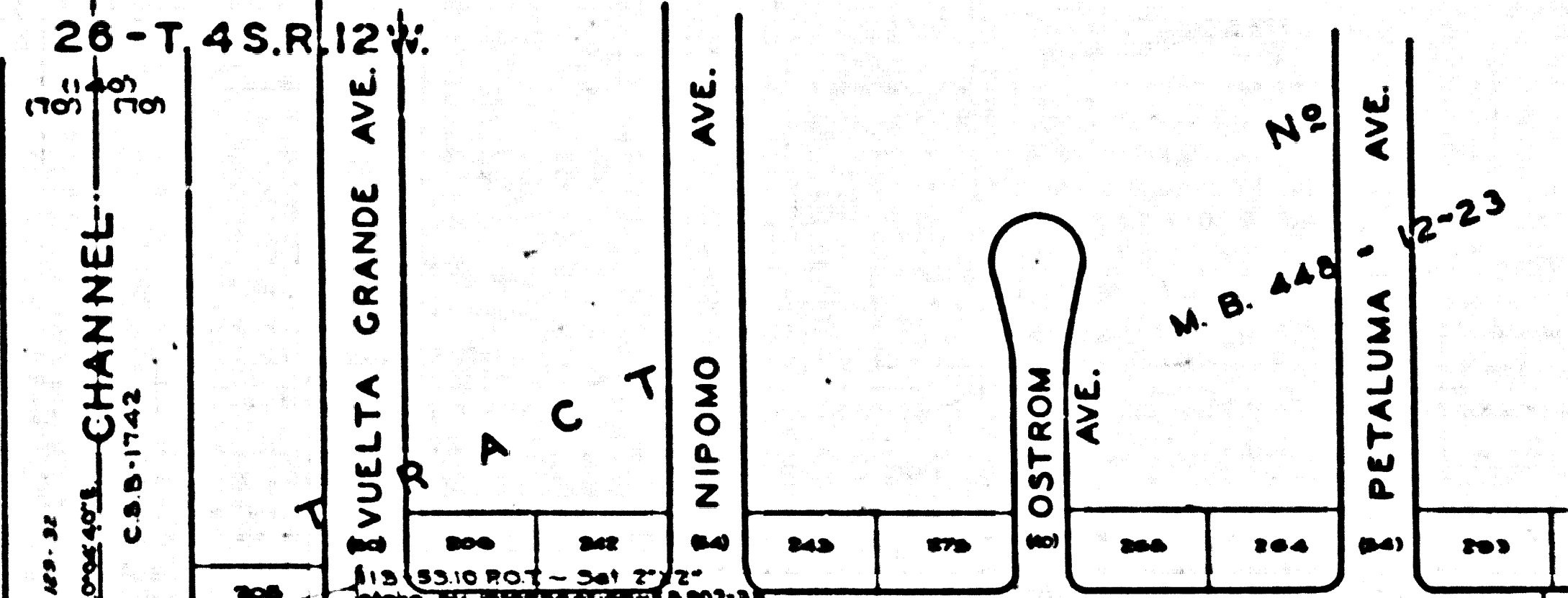
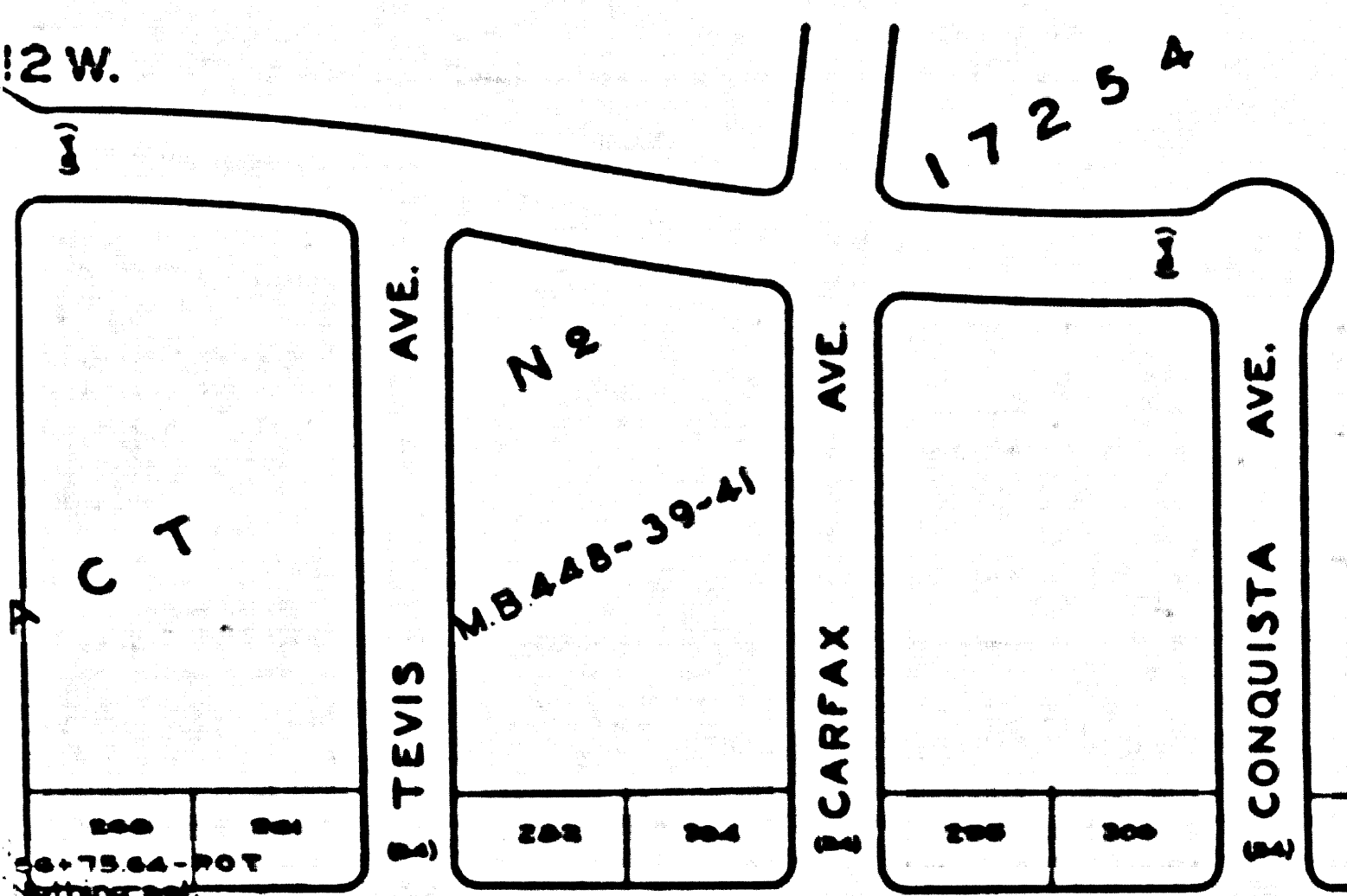
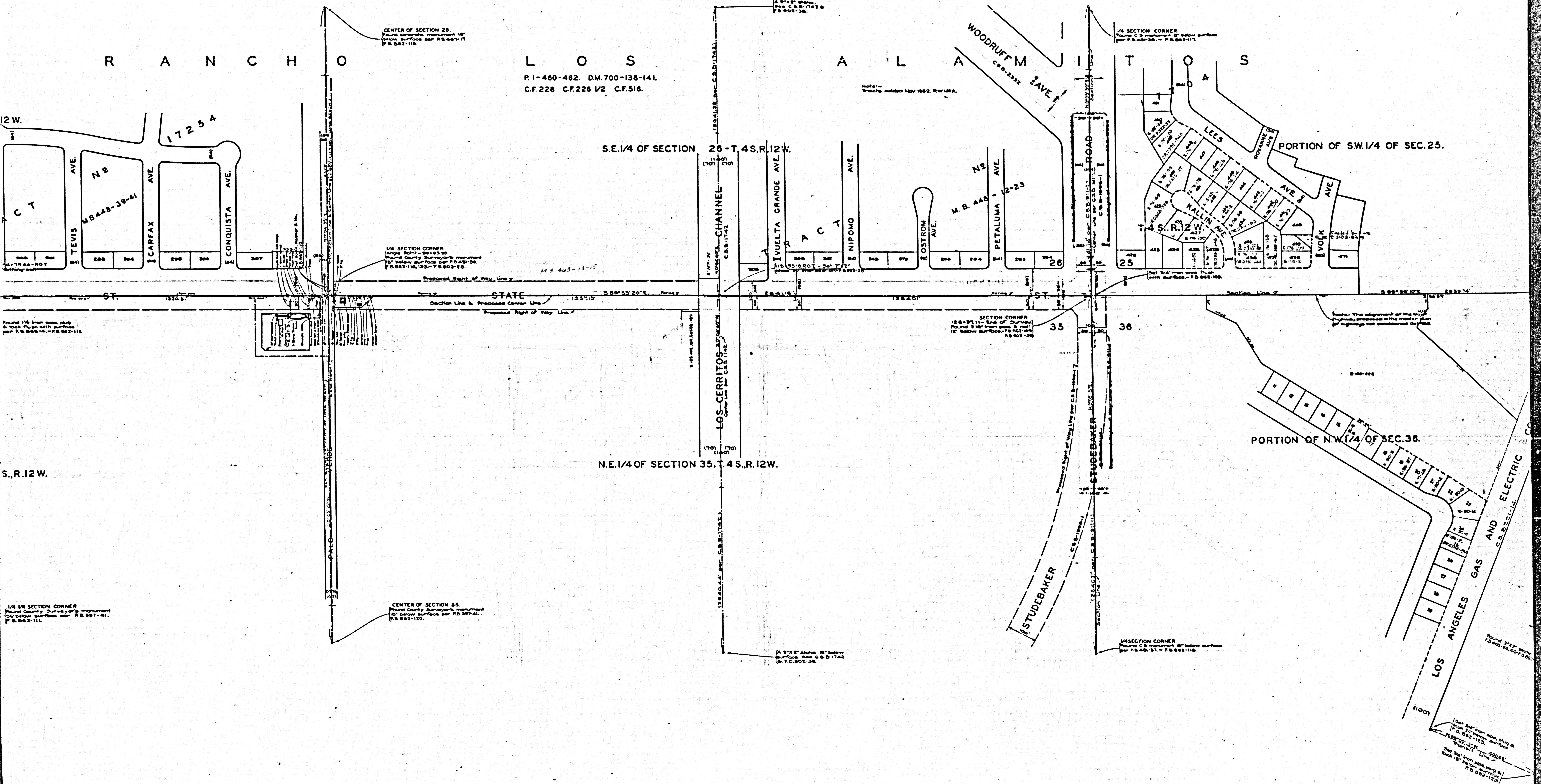
R A N C H O

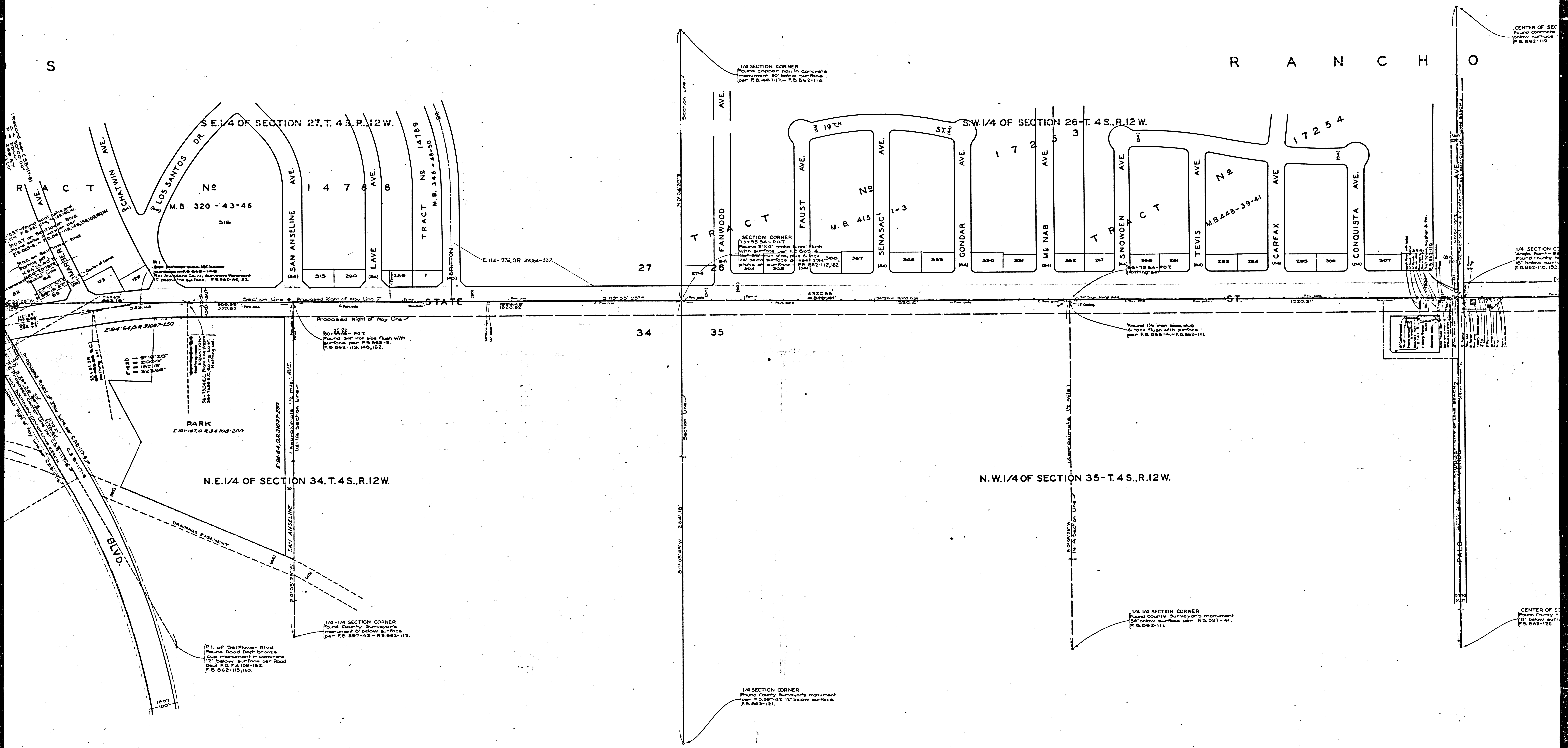
L O S

A L A W O O D R U F F M I T O S

R.1-460-462. D.M.700-138-141.  
C.F.228 C.F.228 V2 C.F.516.

Note: -  
Tracts added Nov 1962 RWMA.





CENTER OF SEC  
Found concrete  
below surface  
F.B. 662-119

1/4 SECTION CORNER  
Found copper nail in concrete  
monument 30" below surface  
per F.B. 662-117 - F.B. 662-114

SECTION CORNER  
Found 2"x4" stake & nail flush  
with surface per F.B. 662-114  
Found iron pipe, plug & lock  
1/4" below surface diameter 2 1/4"  
stake on surface per F.B. 662-112, 162  
304

1/4 SECTION CORNER  
Found County Surveyor's monument  
15" below surface  
F.B. 662-110, 120

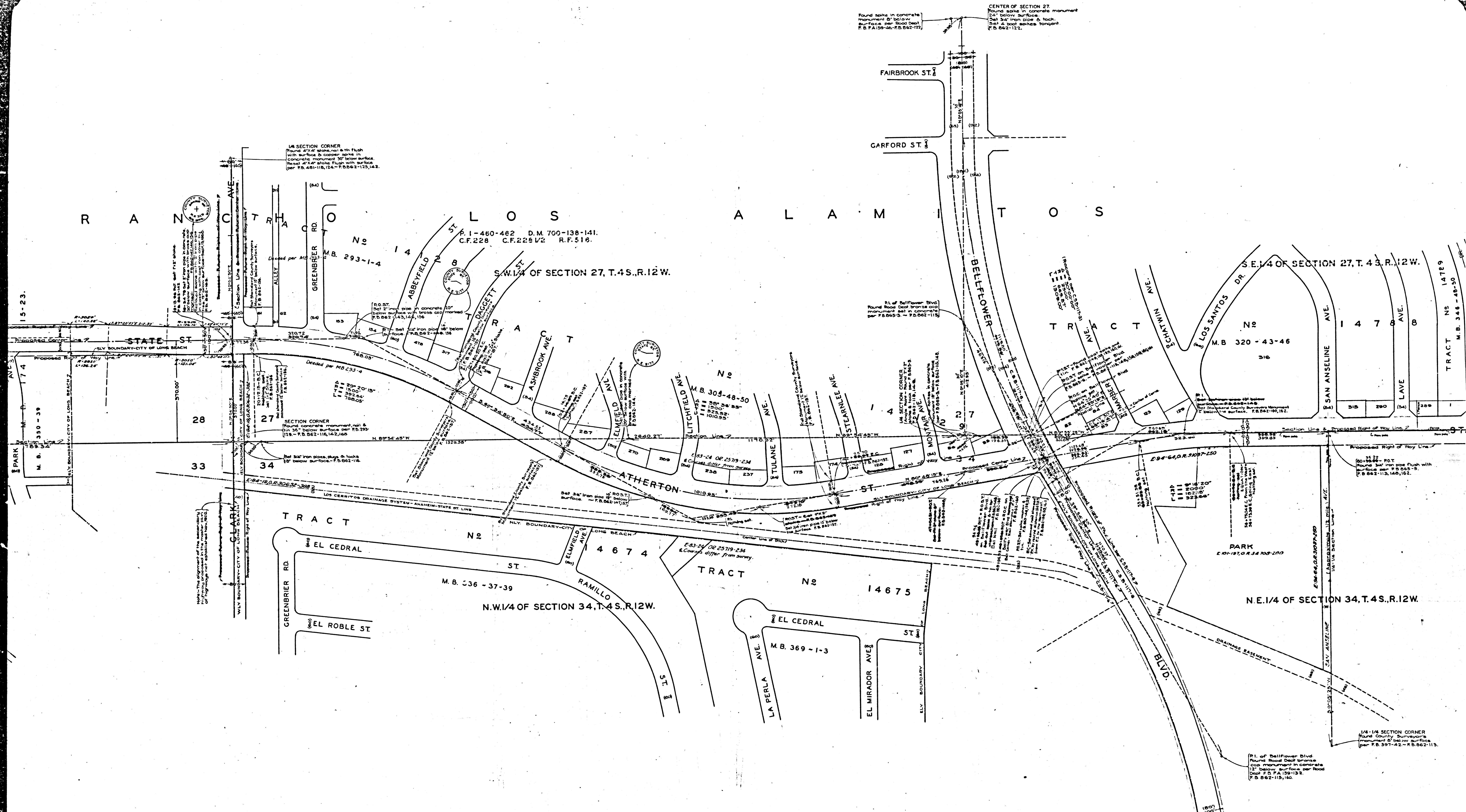
Found 1 1/2" iron pipe, plug  
& lock flush with surface  
per F.B. 662-111

1/4 1/4 SECTION CORNER  
Found County Surveyor's monument  
30" below surface per F.B. 662-111

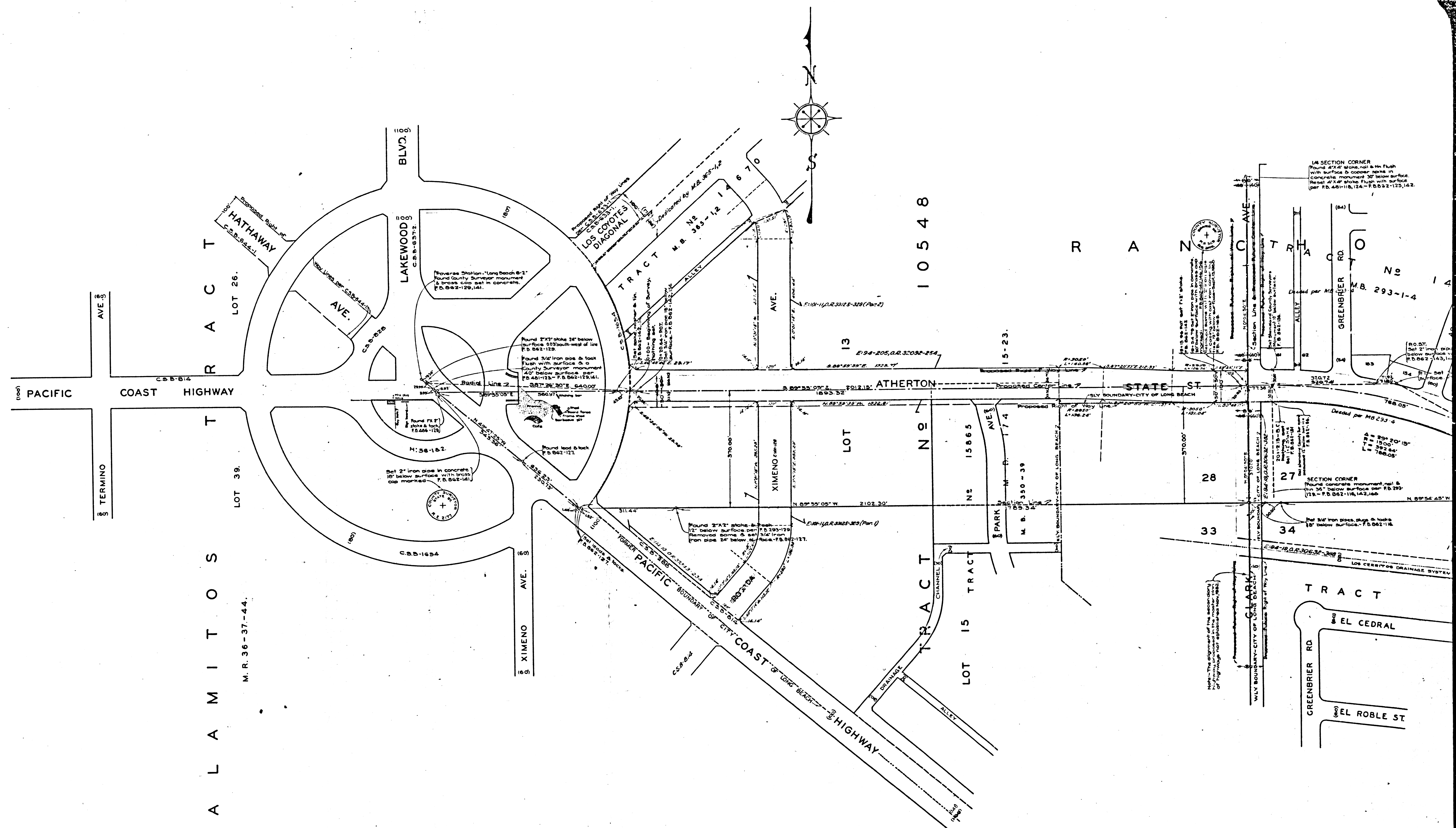
1/4 SECTION CORNER  
Found County Surveyor's monument  
base F.B. 397-42 12" below surface.  
F.B. 662-121.

CENTER OF SEC  
Found County Surveyor's monument  
15" below surface  
F.B. 662-120

CSB-1749  
A3 of A5



CSB-1749  
 A4 of A5



A L A M I T O S

M. R. 36-37-44.

LOT 26.

LOT 39.

10548

CSB-1749  
A5 OF A5

COUNCIL SURVEYORS MAP No. 5113