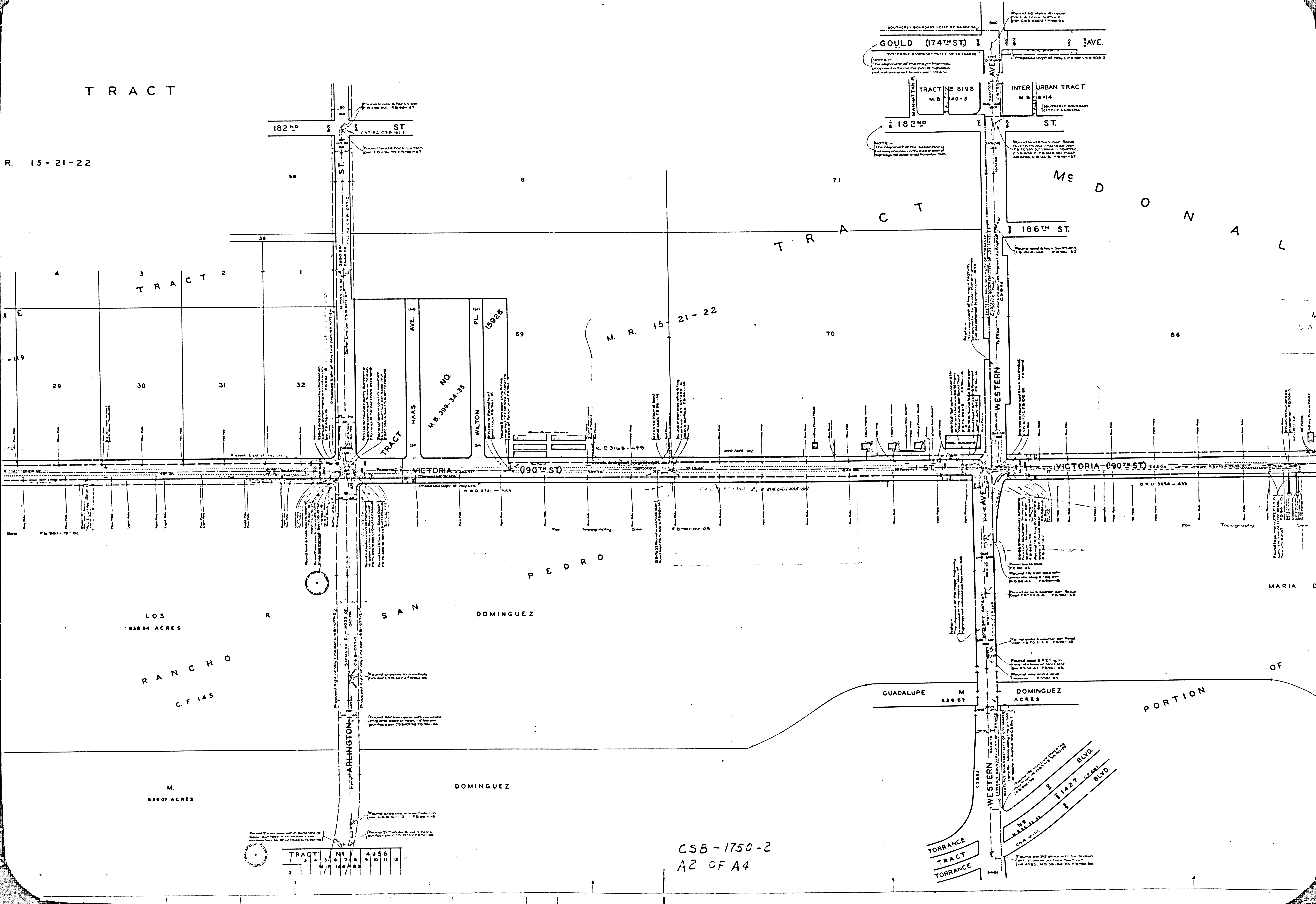


TRACT

R. 15-21-22



LOS DOMINGUEZ
638.94 ACRES

RANCHO PEDRO
C.F. 145

M. DOMINGUEZ
639.07 ACRES

TRACT NO. 8198
M.B. 140-5

TRACT NO. 4356
M.B. 399-34-35

WILTON PL. 15928

TRACT	NO.	4356
1	3	4
2	5	6
3	7	8
4	9	10
5	11	12

CSB-1750-2
A2 OF A4

NOTE -
The alignment of the secondary highway proposed in the master plan of highway established November 1945.

NOTE -
The alignment of the secondary highway proposed in the master plan of highway established November 1945.

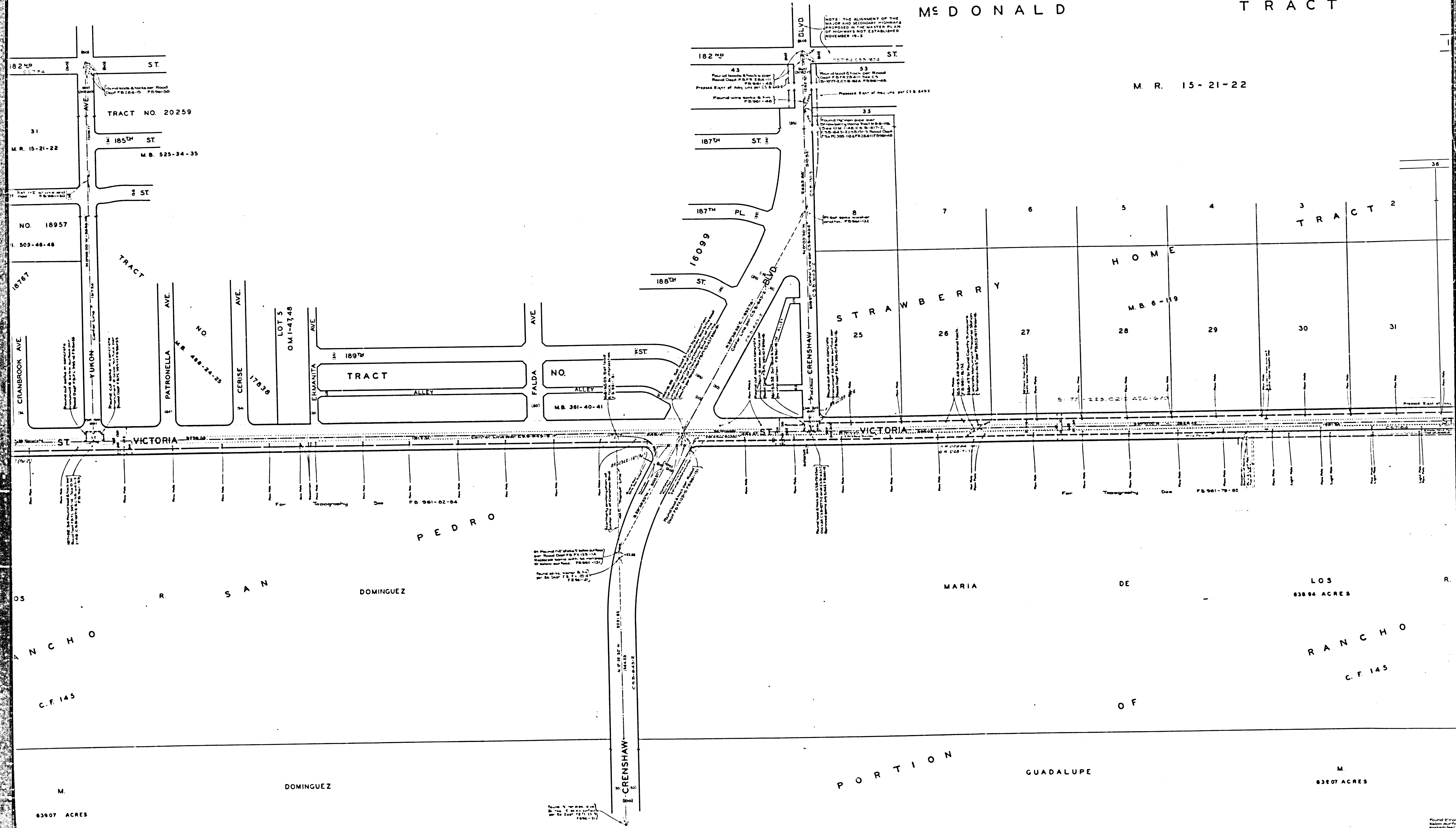
NOTE -
The alignment of the secondary highway proposed in the master plan of highway established November 1945.

NOTE -
The alignment of the secondary highway proposed in the master plan of highway established November 1945.

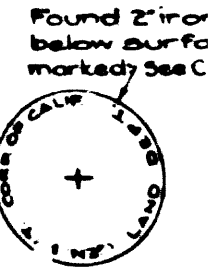
MCDONALD

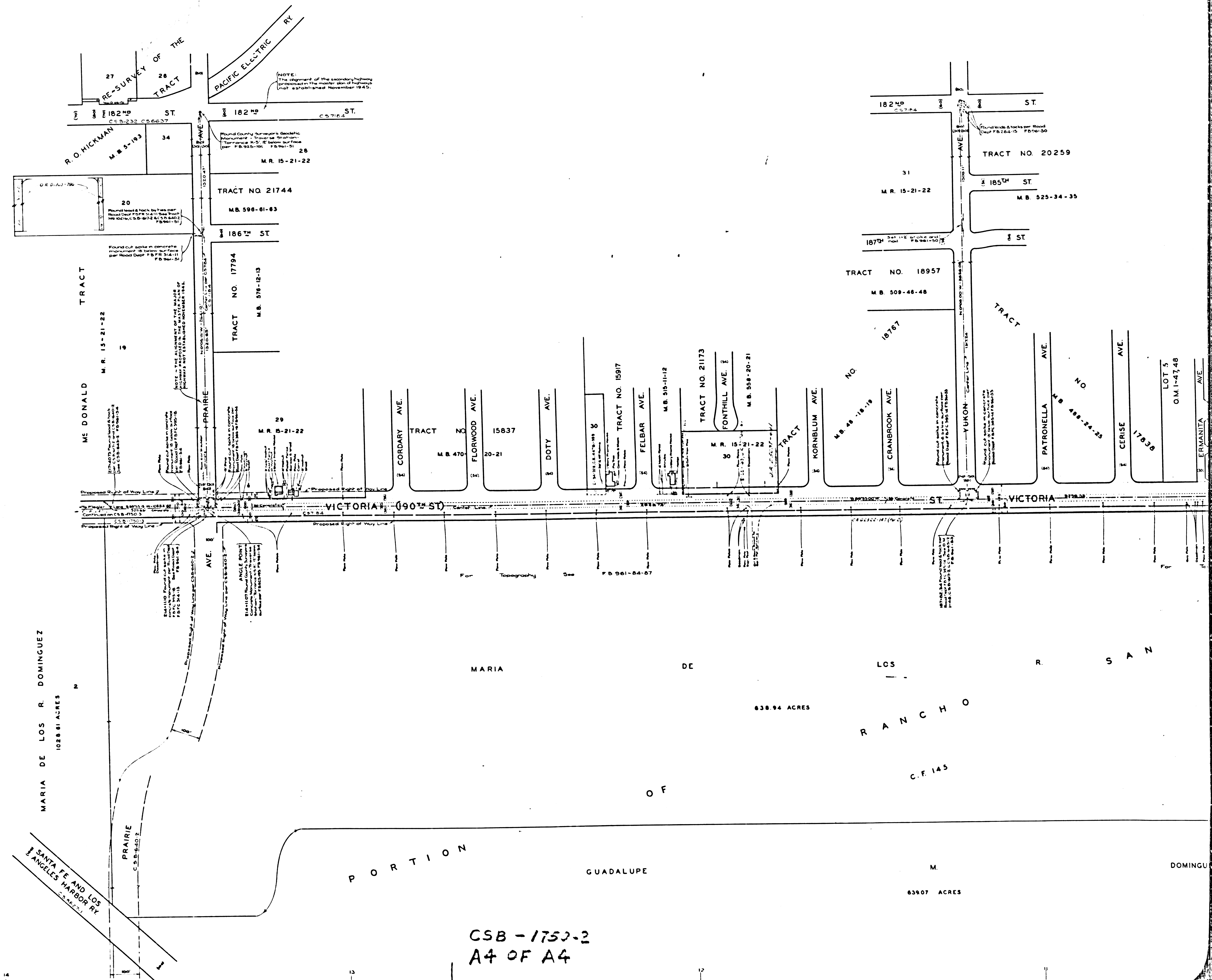
TRACT

M. R. 15-21-22



CSB-1750-2
A3 OF A4





NOTE:
The alignment of the secondary highway
proposed in this plat is of highway
not established November 1945.

Found County Surveyor's Geologic
Monument - Tract 15-21-22
Tolerance 4-5' E below surface
per P.B. 925-101 P.B. 941-51

Found lead & back by the plat
found lead from the plat in the
Monument C.S.B. 672 A.C.S. 640
P.B. 941-51

Found cut slope in concrete
monument 18 below surface
per Road Dept. P.B. 941-51

NOTE: In the alignment of the
proposed Victoria (190th St) the
Monument is not established
November 1945.

Found cut slope in concrete
monument 18 below surface
per Road Dept. P.B. 941-51

Found cut slope in concrete
monument 18 below surface
per Road Dept. P.B. 941-51

Found cut slope in concrete
monument 18 below surface
per Road Dept. P.B. 941-51

Found cut slope in concrete
monument 18 below surface
per Road Dept. P.B. 941-51

Found cut slope in concrete
monument 18 below surface
per Road Dept. P.B. 941-51

Found cut slope in concrete
monument 18 below surface
per Road Dept. P.B. 941-51

CSB - 1750-2
A4 OF A4

For Topography See P.B. 961-84-87

638.94 ACRES

C.F. 145

638.07 ACRES

DOMINGUEZ