

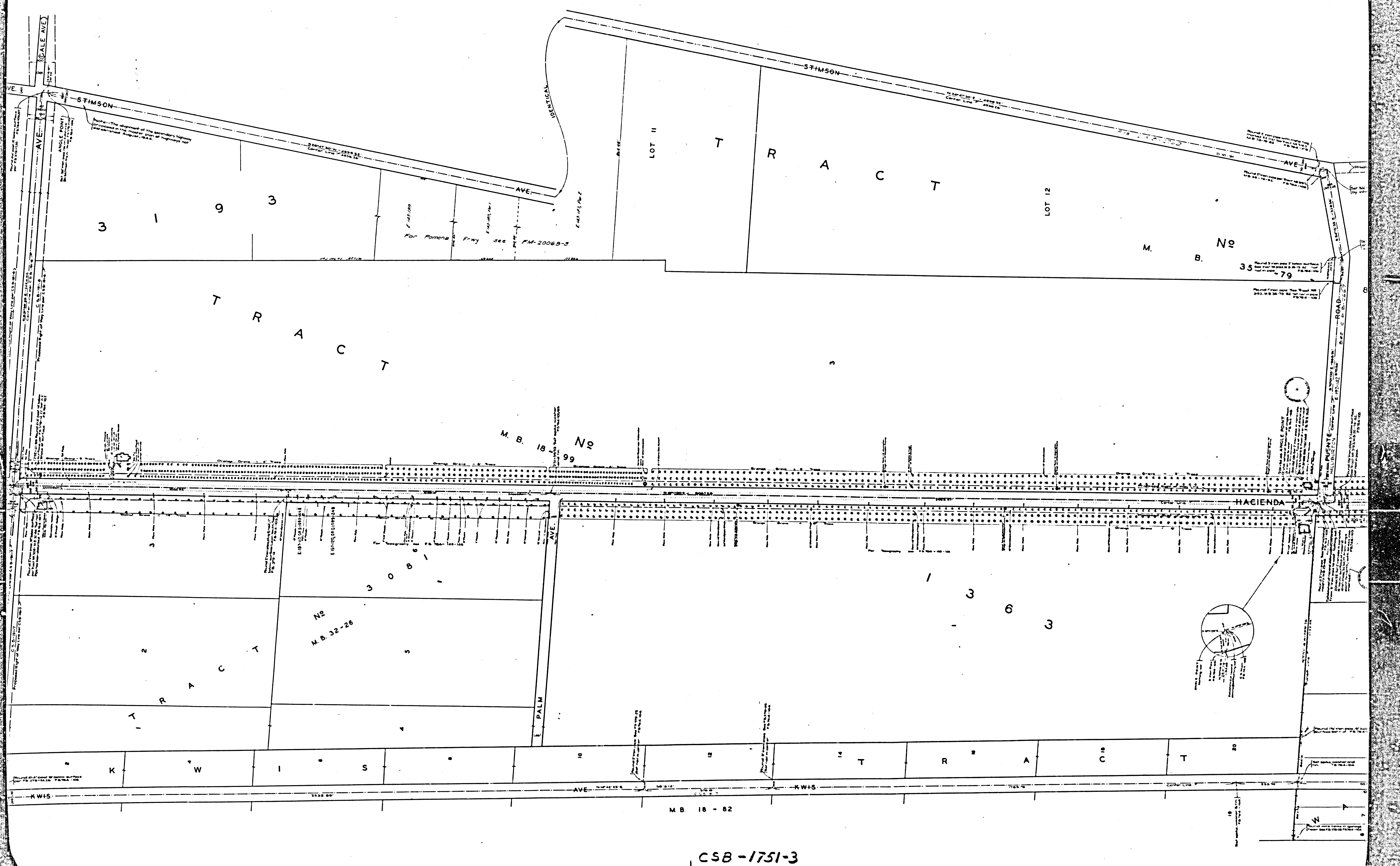
COUNTY OF LOS ANGELES  
 MAP OF  
**HACIENDA BOULEVARD**  
 FROM  
**ORANGE COUNTY BOUNDARY**  
 GLENORA TO AVENUE  
**VALLEY BOULEVARD**  
 COUNTY SURVEYORS MAP NO B-1751  
 SHEET NO 3 OF 5 SHEETS  
 SCALE: 1 INCH = 100 FT

JOB NUMBER 8227.  
 ALFRED JONES - COUNTY SURVEYOR  
 SURVEYED DEC. 1938 - SEPT. 1941.  
 SURVEYED ON REQUEST OF THE REGIONAL PLANNING  
 COMMISSION UNDER RULE 21, ORD. 929 BY LETTER  
 DATED JUNE 30, 1938 & AS AUTHORIZED BY THE BOARD  
 OF SUPERVISORS IN THEIR ORDER OF JUNE 1, 1938.  
 BEARINGS ARE BASED ON THE LOS ANGELES  
 COUNTY COORDINATE SYSTEM, LAMBERT GRID,  
 CENTRAL MERIDIAN 118°20' WEST. SEE C.S. 9423.

FB 764-2-198-218 INDEX 38  
 PLANE TABLE SHEETS NUMBERS G-176,  
 G-177, G-178, G-179, G-180, G-182, G-183, G-184 & G-185.  
 FIELD WORK BY: F. GREENWOOD  
 T.M. WALSH  
 A. HELLSTROM  
 A.A. ROE SER  
 OFFICE WORK BY: R.W. MALLISTER  
 A.A. ROE SER  
 CHECKED BY: A.A. ROE SER  
 FOR CONTOUR MAP SEE C.S. B-481-1, 2.

Revised, Sept. 1941 - J.D. Price.  
 Revised Oct. 1948 - J.D. Price.  
 Revised July 1952 - E.B. Brown.  
 SHEET 4 ADDED OCT. 1948.  
 SHEET 5 ADDED JULY, 1952.

CSB-1751-3  
 A1 OF A4

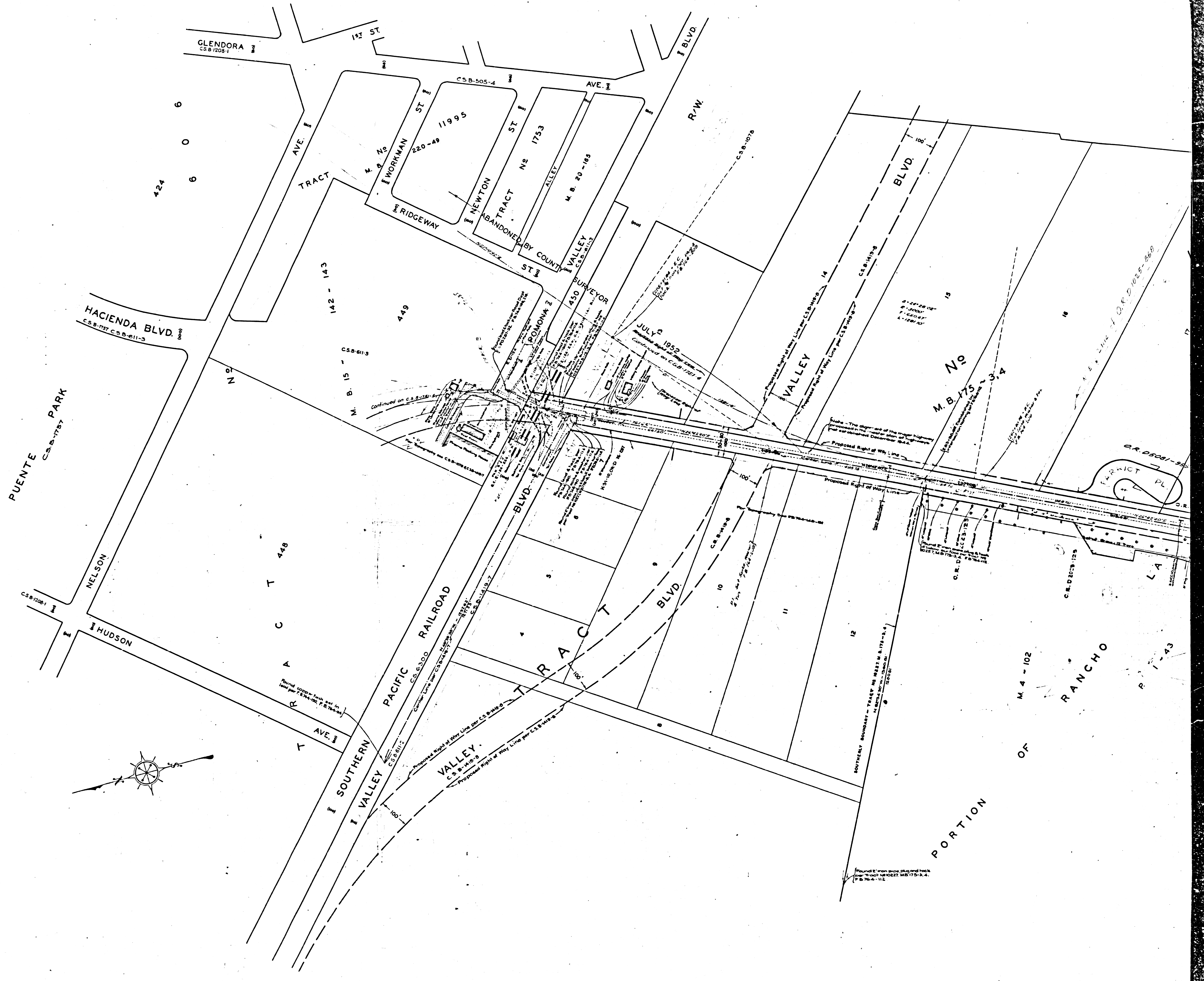


CSB-1751-3  
A2 OF A4



CSB - 1751-3  
A3 OF A4

*Handwritten signature or initials in the bottom right corner.*



CSB-1751-3  
 A4 OF A4