

MAP OF
 LOS ANGELES COUNTY FIRE STATION SITE N°5
 IN THE
 CONSOLIDATED MAP OF
 SAN GABRIEL VALLEY FIRE PROTECTION DISTRICT LOT.
 ENGINE COMPANY N° 5.
 BEING A PORTION OF LOT 79 IN TRACT N° 4850. M.B. 52-11 & 12.

COUNTY SURVEYOR'S MAP N° B-1753.
 SCALE: 1 INCH = 50 FT.

JOB NUMBER 8342.
 ALFRED JONES-COUNTY SURVEYOR
 SURVEYED FEBRUARY, 1942.
 SURVEYED UPON REQUEST OF THE COUNTY
 FORESTER & FIRE WARDEN UNDER RULE 21,
 ORD. 829 BY LETTER DATED FEB. 2, 1942.
 & AS AUTHORIZED BY THE BOARD OF SUPERVISORS
 IN THEIR ORDER OF JANUARY 13, 1930.
 BEARINGS ARE BASED ON THE BEARING OF
 ROSEMEAD BLVD AS SHOWN ON C.S.B-1121.
 F.B. 898-297-303
 FIELD WORK BY A. HELLSTROM
 OFFICE WORK BY R.R. MPPERSON
 D.A. WHITE
 CHECKED BY R.R. MPPERSON

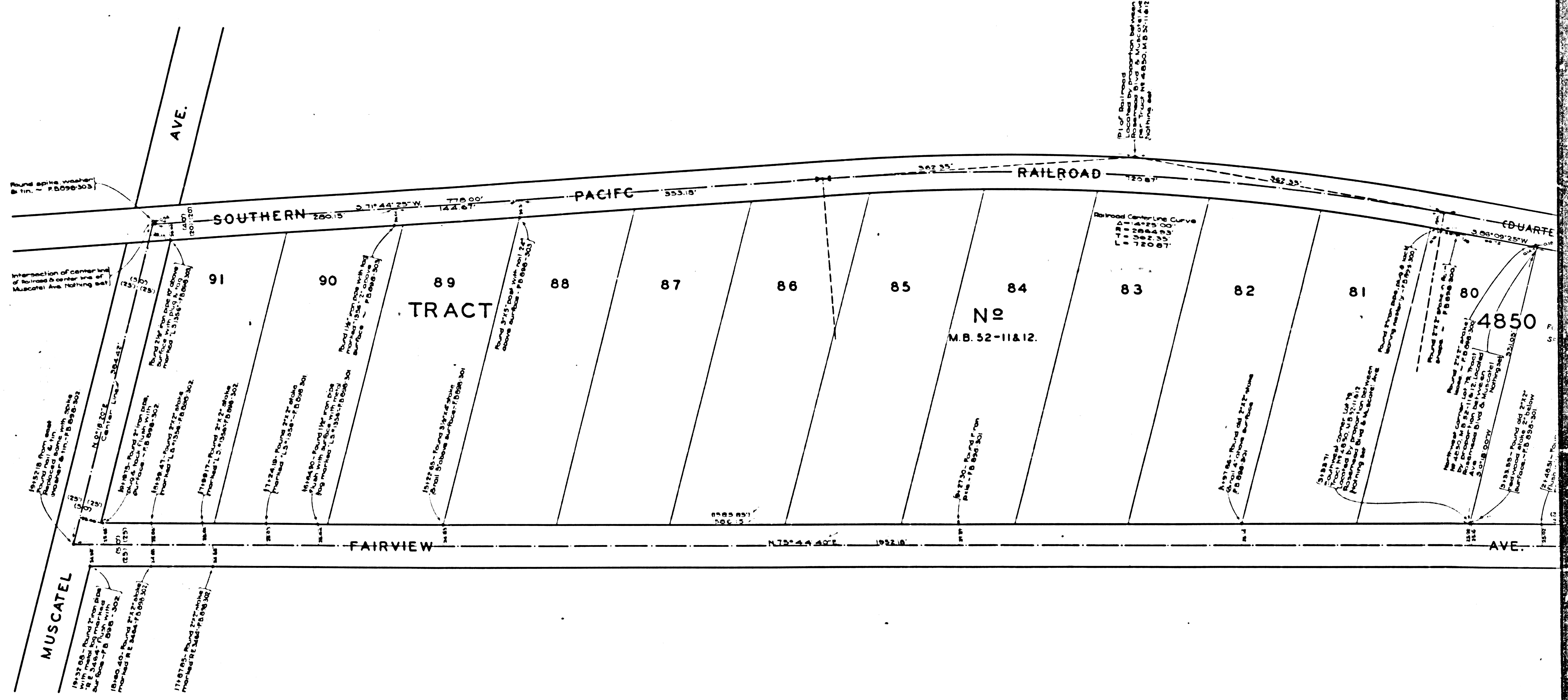
FOR TOPOGRAPHIC MAP SEE C.S.B. 2092

CSB-1753
 A1 OF A2

COUNTY SURVEYOR'S MAP N° B-1753

СОСТАВЛЯЮЩАЯ ЧАСТЬ М.В. № 1323

Составляющая часть М.В. № 1323



ARCADIA

CSB-1753
A2 OF A2