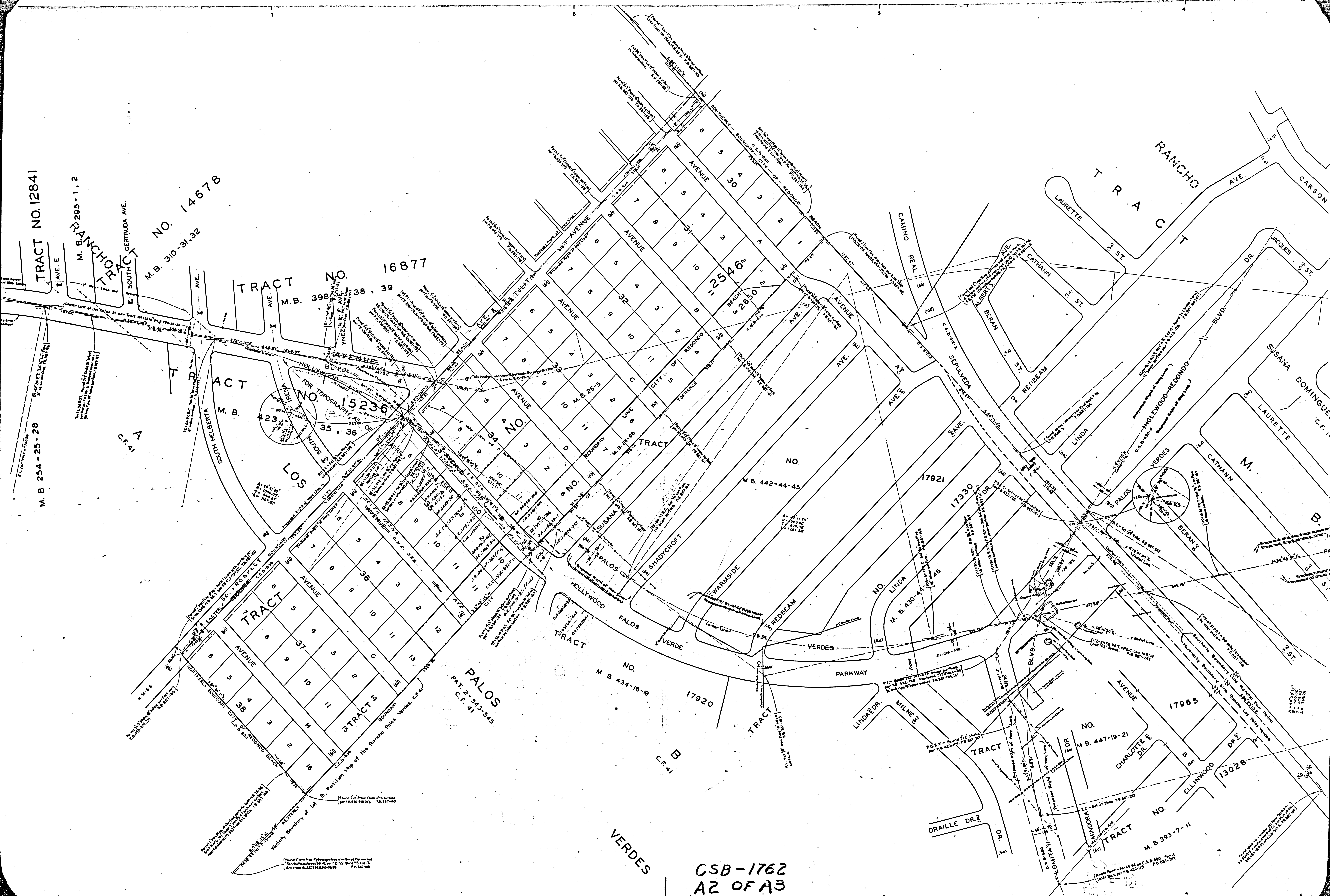


MAP OF
HOLLYWOOD PALOS VERDES
PARKWAY-BLVD
 FROM
 PACIFIC COAST HIGHWAY
 TO
 JASPER STREET
 COUNTY SURVEYORS MAP NO B-1762
 SCALE=1 INCH = 100 FT.

JOB NUMBER 6332
 ALFRED JONES- COUNTY SURVEYOR
 SURVEYED OCTOBER, 1941
 SURVEYED ON REQUEST OF REGIONAL PLANNING
 COMMISSION UNDER RULE 21, ORD. 929, BY LETTER
 DATED SEPT. 23, 1941 AND AS AUTHORIZED BY BOARD
 OF SUPERVISORS IN THEIR ORDER OF JUNE 1, 1938.
 BEARINGS ARE BASED ON BEARING OF HOLLYWOOD
 PALOS VERDES PARKWAY AS SHOWN ON C.S.B.1314.
 F.B. 8875H78, 247, 255-256
 FIELD WORK BY..... L. D. MOORE
 OFFICE WORK BY..... A. E. TIMMONS
 CHECKED BY..... A. H. DREW

FOR PLAN AND PROFILE SEE C.S. B-1763
 FOR CROSS SECTIONS SEE C.S. B-1764
 INDEX 25 & 27
 Revised July, 1959 cco,ra
 REVISIONS, AUGUST, 1951-ccl.b.

CSB-1762
 A1 OF A3



TRACT NO. 12841

M. B. 295-1, 2

TRACT NO. 14678
M. B. 310-31, 32

TRACT NO. 16877
M. B. 398-38, 39

TRACT NO. 12546
M. B. 2650

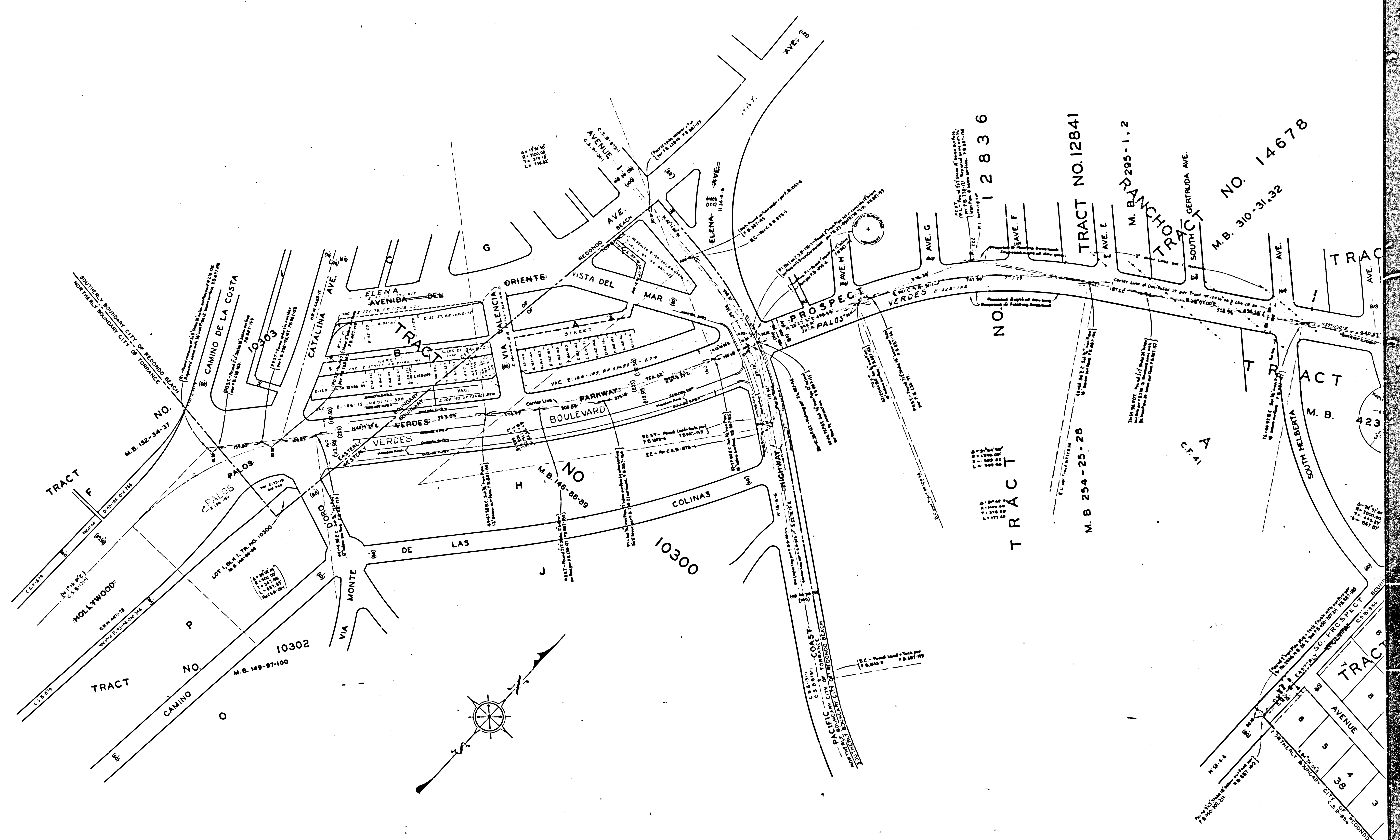
TRACT NO. 15236
FOR TOPOGRAPHY

PALOS
PAT. 2-543-345
C.F. 41

CSB-1762
A2 OF A3

Found 3" Iron Pipe in place of corner with line as shown
Remains in place and is not to be removed
See Tract No. 2575-11 B. 145-19, 19
P. B. 147-40

Angle Point - 74-00-00 on C & B-580
Curb - 100' per E. B. 425-115
P. B. 427-147



CSB-1762
A3 OF A3

SCALE: 1" = 100'

RECORDS SECTION
CITY OF REDONDO BEACH
1958-1960