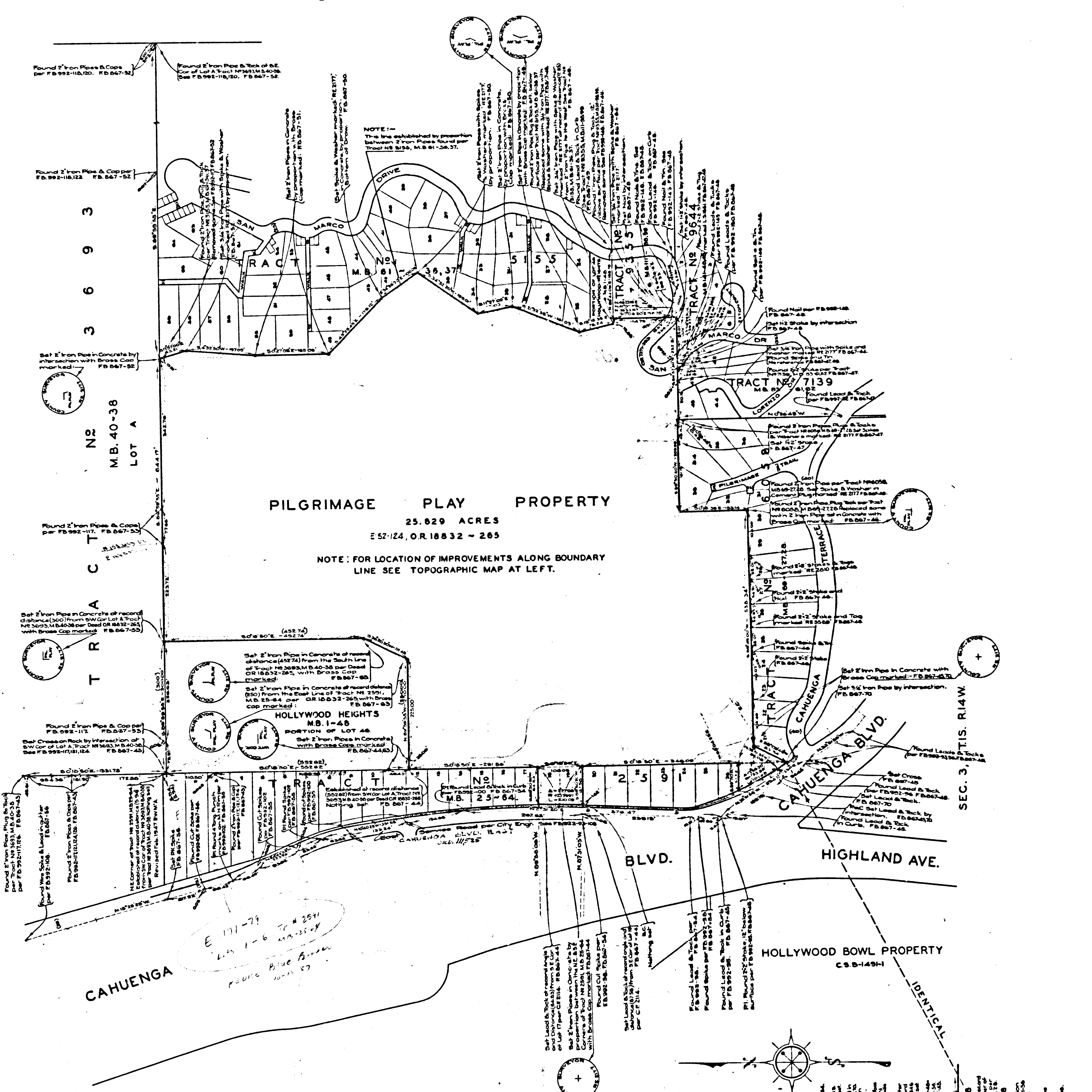


**MARGINAL MAP
SHOWING
TOPOGRAPHY**
SCALE: 1 INCH = 40 FT.

DATUM
ELEVATIONS SHOWN HEREON ARE BASED ON
THE LOS ANGELES CITY S.M. NO. 9 (F.B. 17683-19)
THE DATUM OF WHICH IS BASED ON THE
1932 U.S.C. & G.S. ADJUSTMENT OF U.S.G.S.
B.M. NO. 37-34-28 (U.S. 838) F.B. 18979-4.

FOR DETAIL OF STAGE AREA SEE C.S.B-1902



PILGRIMAGE PLAY PROPERTY
25.829 ACRES
E 52-124, OR 18832 - 265

NOTE: FOR LOCATION OF IMPROVEMENTS ALONG BOUNDARY
LINE SEE TOPOGRAPHIC MAP AT LEFT.

INDEX 40

**MAP OF
PILGRIMAGE PLAY PROPERTY**
BEING
A PORTION OF LOT 46 OF HOLLYWOOD HEIGHTS, M.B. 1-48,
LOTS 18 & 19 AND A PORTION OF LOT 26, TRACT NO. 259, M.B. 25-64
A PORTION OF LOT E, TRACT NO. 1946, M.B. 21-56
AND A PORTION OF SECTION 3, T.1S. R.14 W.

COUNTY SURVEYORS MAP NO. B-1769.
SCALE: 1 INCH = 100 FT.

JOB NUMBER 8343

ALFRED JONES - COUNTY SURVEYOR
SURVEYED FEB. 1942 TO FEB. 1943

SURVEYED UNDER INSTRUCTIONS OF THE
BOARD OF SUPERVISORS PER ORDER DATED
FEBRUARY 3, 1942

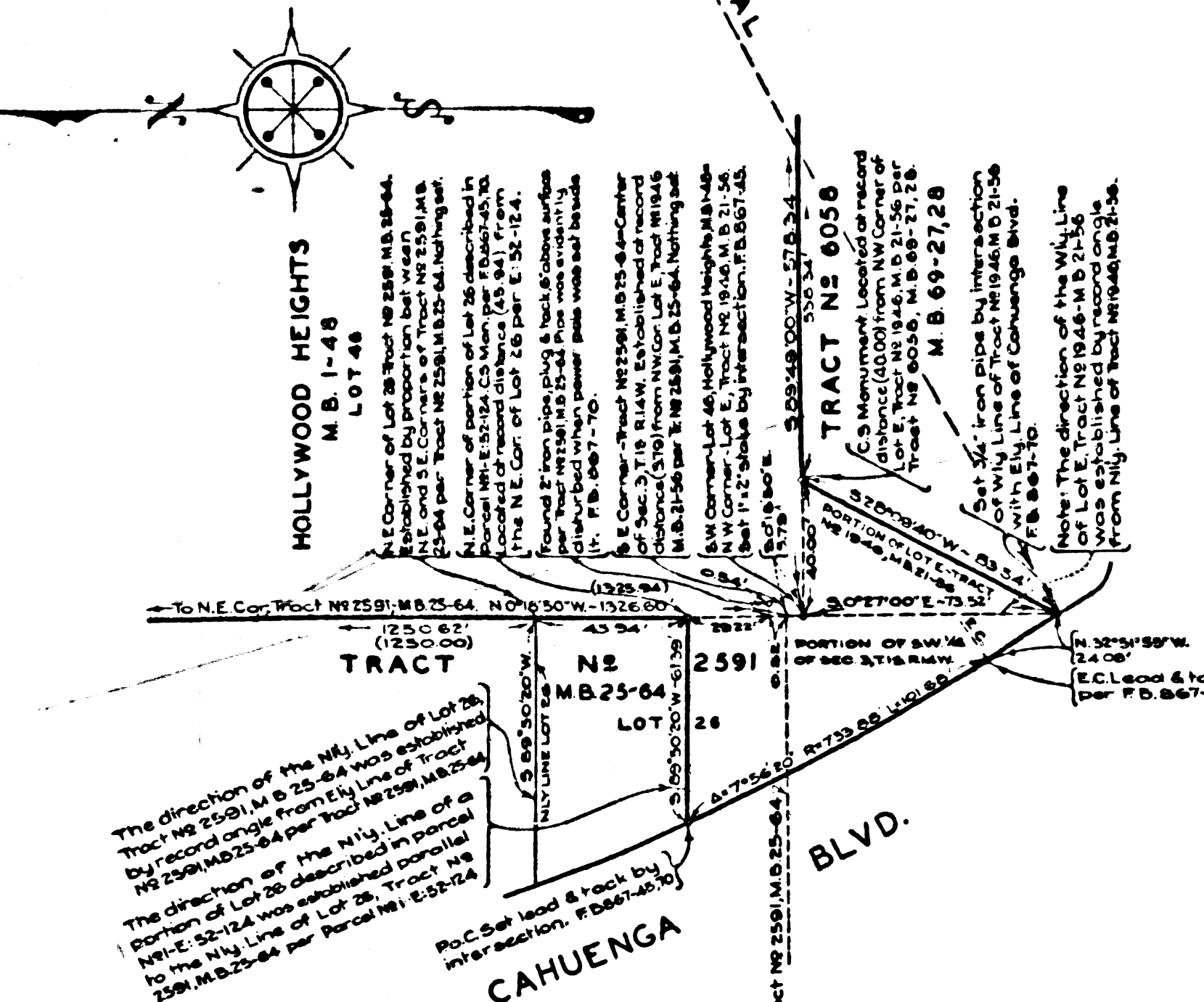
BEARINGS ARE BASED ON THE LOS ANGELES
COUNTY COORDINATE SYSTEM, LAMBERT
GRID, CENTRAL MERIDIAN 118° 20' WEST.
SEE C.S. 9423.

F.B. 887-27-70, PLANE TABLE SHOTS G230, G231.

FIELD WORK BY: T. WALSH
L. MOORE
F.J. NEAL
C.J. TERRY
OFFICE WORK BY: A.E. TIMMONS
R.W. ALLISTER
A.H. DREW
CHECKED BY: L.K. FREEMAN

Revised February 1947, R.W. McAllister

CSB-1769
A1 OF A2



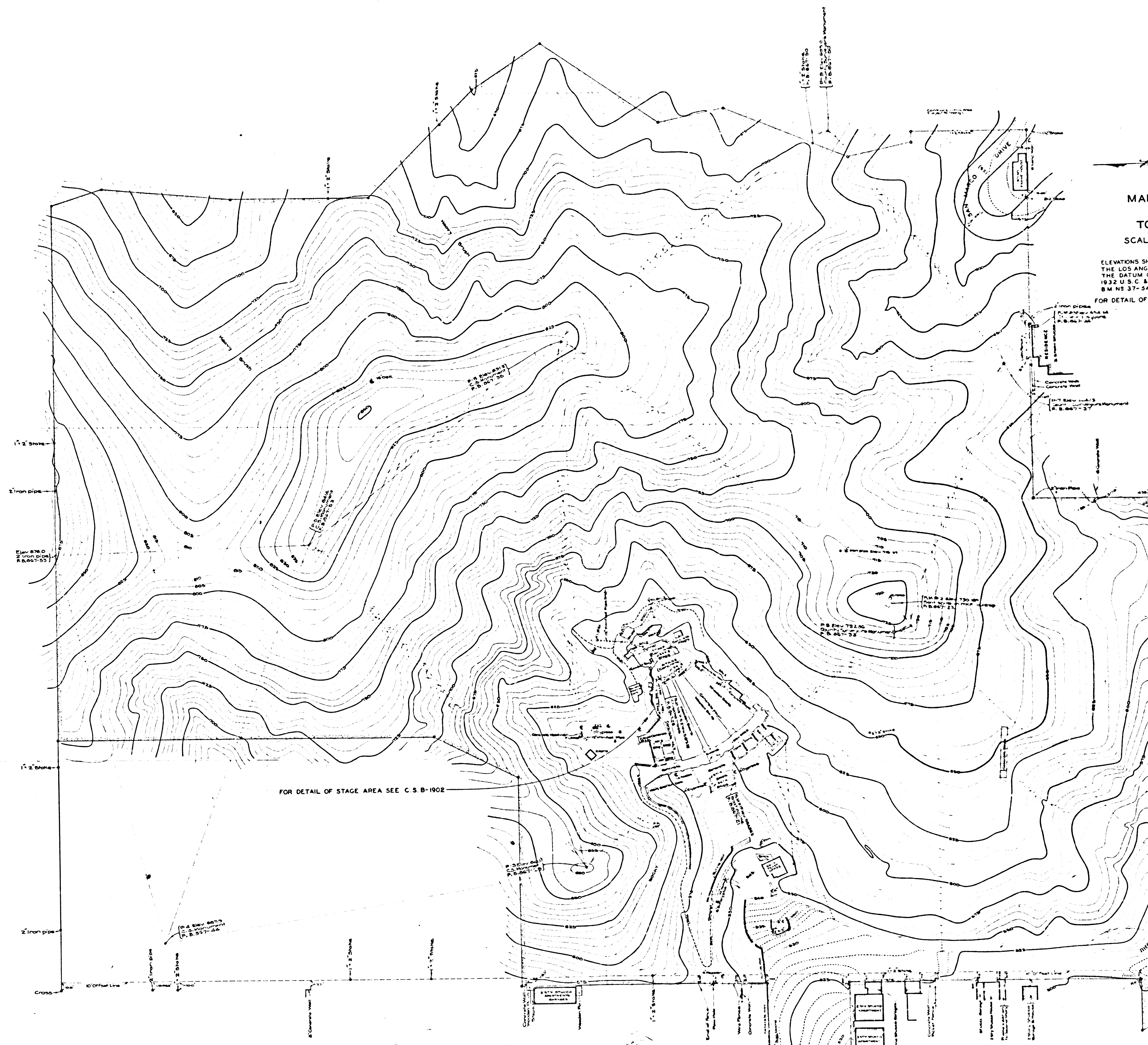
MARGINAL MAP
Scale: 1 inch = 40 feet

8 4,187,400

8 4,187,000

8 4,186,600

8 4,186,200



MAR
TOP
SCALE

ELEVATIONS SHOWN
THE LOS ANGELES
THE DATUM OF
1932 U.S.C. & G.S.
B.M. NO. 37-24-C
FOR DETAIL OF S...

FOR DETAIL OF STAGE AREA SEE C.S.B-1902

CSB - 1769
A2 OF A2

8 4,186,000

8 4,185,000

8 4,184,000