

COUNTY OF LOS ANGELES  
 MAP OF  
**WOODRUFF AVENUE**  
 FROM  
 SPRING STREET  
 SOUTH TO  
 ORANGETHORPE AVENUE  
 COUNTY SURVEYORS MAP No. B-1772-1  
 SHEET No. 1 OF 2 SHEETS  
 SCALE: 1 INCH = 100 FT.

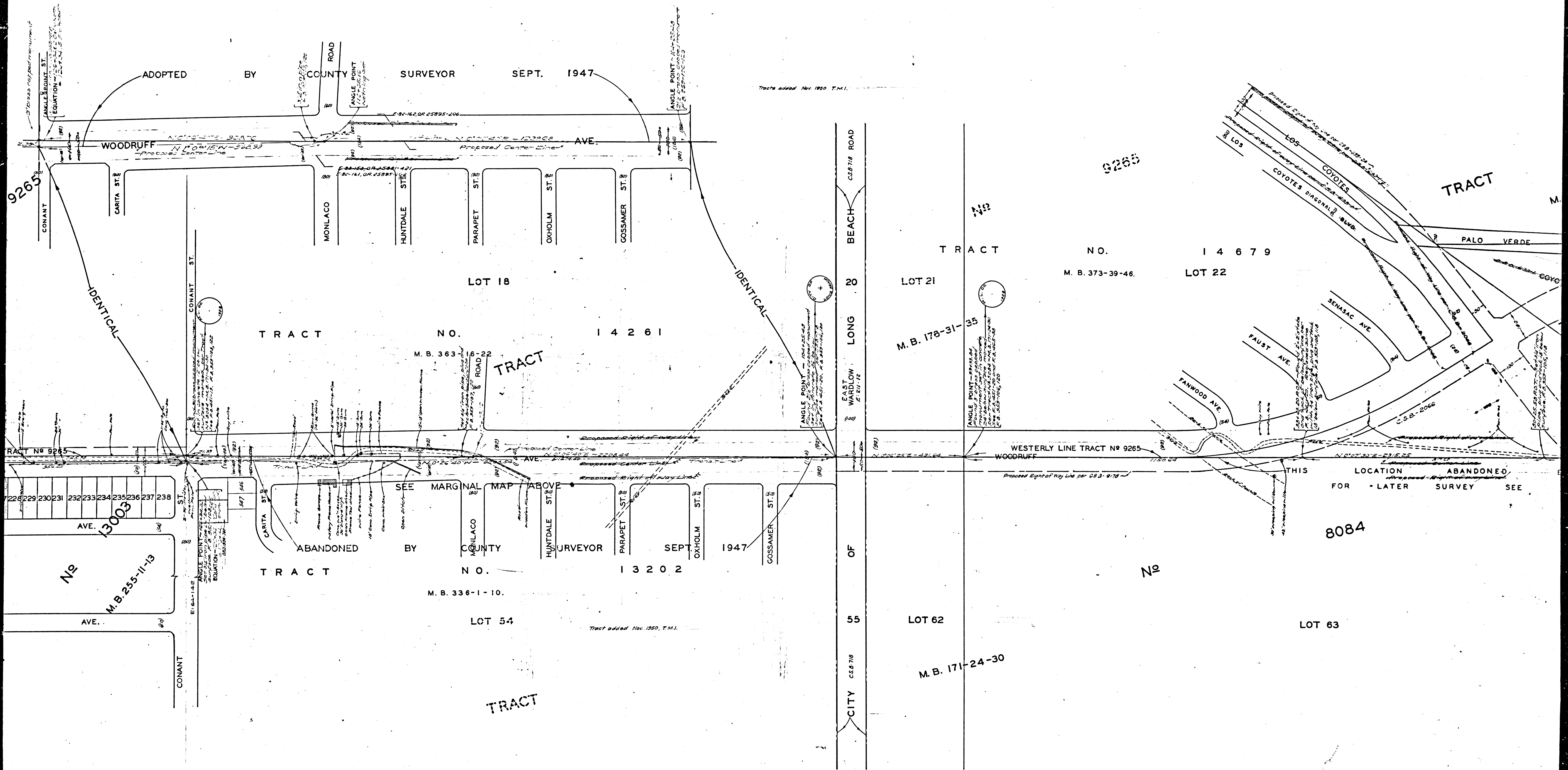
INDEX 31

JOB NUMBER 8347  
 ALFRED JONES-COUNTY SURVEYOR  
 SURVEYED- APRIL 1942  
 SURVEYED UNDER INSTRUCTIONS OF THE  
 BOARD OF SUPERVISORS PER ORDER DATED  
 APRIL 14, 1942  
 BEARINGS ARE BASED ON THE LOS ANGELES  
 COUNTY COORDINATE SYSTEM, LAMBERT  
 GRID, CENTRAL MERIDIAN 118° 20' WEST-  
 SEE C.S. 9423  
 F. B. 950-5-44  
 FIELD WORK BY . . . . . L. D. MOORE  
 OFFICE WORK BY . . . . . K. R. MIPHERSON  
 CHECKED BY . . . . . C. W. COX  
 . . . . . A. H. DREW

Revised - Sept. 1947 - C.W. Cox  
 Revised - October 1947 - C.J. Gall  
 Revised - November 1950 - T.M. Lehman

CSB-1772-1  
 A1 OF A3





CSB-1772-1  
A2 OF A3



