

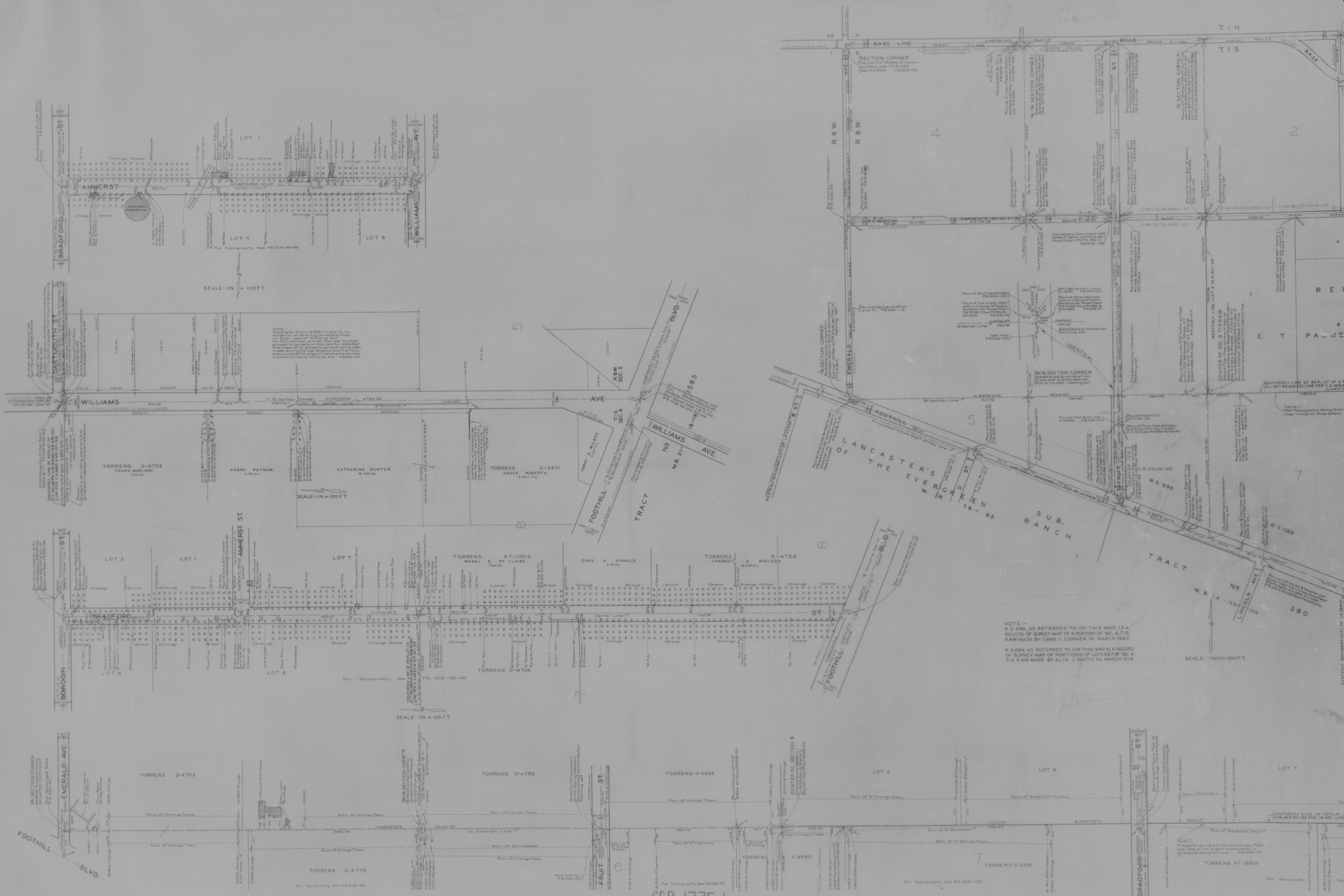
MAP OF  
**GLADSTONE AVENUE**  
 FROM  
**RAMONA AVENUE**  
 TO  
**LOS ANGELES - SAN BERNARDINO COUNTY LINE**  
 COUNTY SURVEYORS MAP N<sup>o</sup>B-1775  
 SHEET N<sup>o</sup> 1 OF 3 SHEETS  
 SCALE AS SHOWN.

JOB NUMBER 7936  
 ALFRED JONES - COUNTY SURVEYOR  
 SURVEYED MAR. 17 DEC. 1941.  
 SURVEYED UNDER INSTRUCTIONS OF THE  
 BOARD OF SUPERVISORS PER ORDER DATED  
 DEC. 24<sup>th</sup> 1928.  
 BEARINGS ARE BASED ON THE BEARING OF  
 FOOTHILL BLVD. PER C.S. B - 934.  
 F. B. 528 - 121-149.  
 FIELD WORK BY AN HELLSTROM  
 OFFICE WORK BY R.W. MALLISTER  
 CHECKED BY . . . . . D.M. FINLEY

INDEX 49

CSB-1775-1  
 A1 OF A2





NOTE -  
 R. S. 996, AS REFERRED TO ON THIS MAP, IS A  
 RECORD OF SURVEY MAP OF A PORTION OF SEC. 6, T. 15  
 R. W. MADE BY CHAS. C. CONGER IN MARCH 1940  
 R. S. 989, AS REFERRED TO ON THIS MAP IS A RECORD  
 OF SURVEY MAP OF PORTIONS OF LOTS 6 & 7 OF SEC. 6,  
 T. 15 R. W. MADE BY ALVA J. SMITH IN MARCH 1935

CSB-1775-1  
 A2 OF A2  
 LONG SCALE 1 IN = 100 FT  
 TRANS SCALE 1 IN = 20 FT