

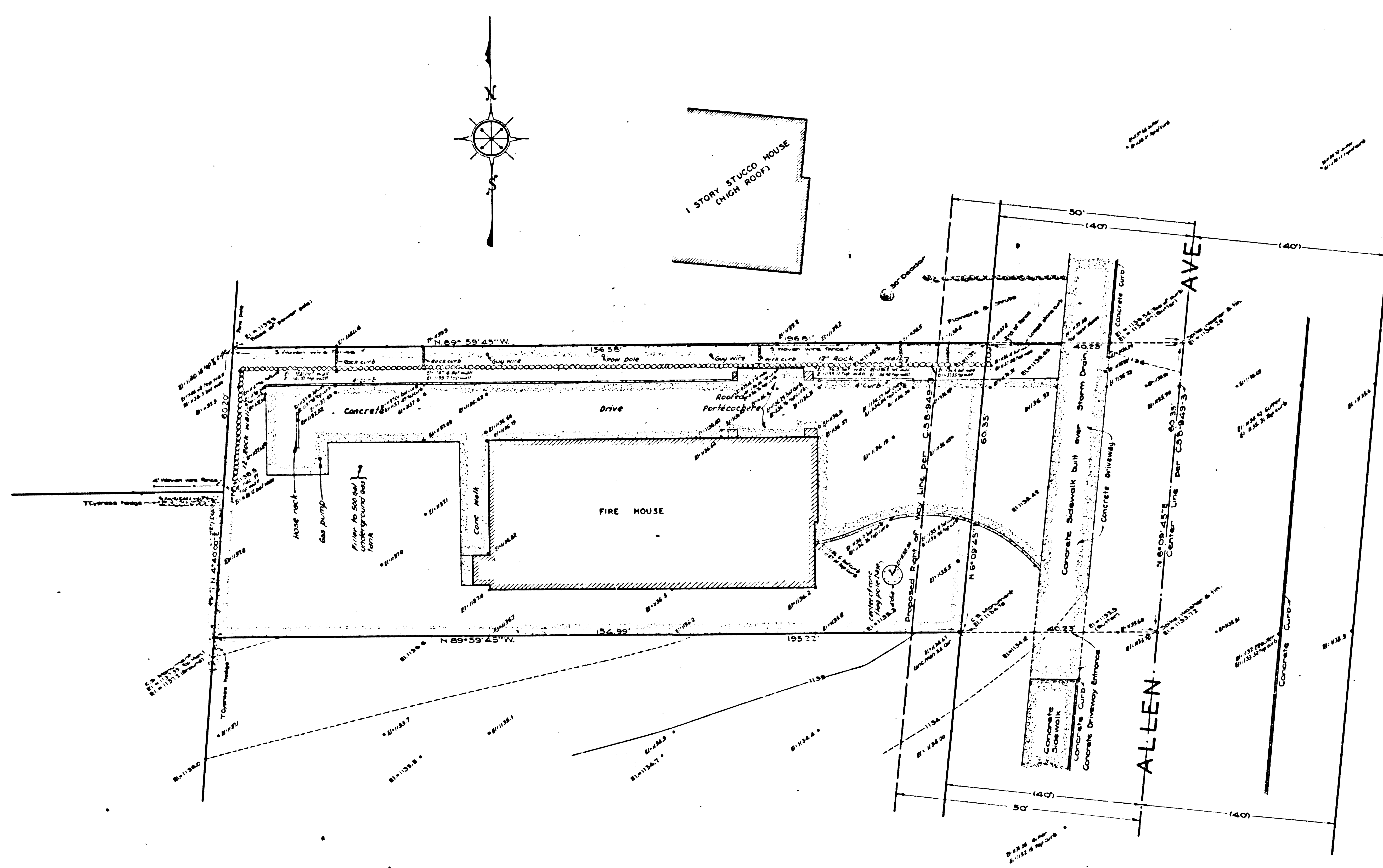
MAP OF  
**LOS ANGELES COUNTY FIRE STATION SITE N°52**  
 COUNTY OF LOS ANGELES  
 IN MAP OF THE  
**ALTADENA FIRE PROTECTION DISTRICT**  
 FIRE STATION SITE

BEING  
**LOT 3 - TRACT N° 6533 - M.B. 69-24.**  
 COUNTY SURVEYORS MAP N°B-1913.  
 SCALE: 1 INCH = 50 FEET

JOB NUMBER ..... 8402  
 ALFRED JONES - COUNTY SURVEYOR  
 SURVEYED ..... JUNE, 1945.  
 SURVEYED ON REQUEST OF THE CHIEF ENGINEER  
 COUNTY FIRE PROTECTION DISTRICTS UNDER  
 SEC. 79, ORD. 4099, BY LETTER DATED MAY 23, 1945.  
 BEARINGS ARE BASED ON THE BEARING OF  
 ALLEN AVE. AS SHOWN ON C.S.B.-949-3.  
 F.B. 898-41-49.  
 FIELD WORK BY..... W.E. BRADEN  
 OFFICE WORK BY..... R.R. MIPHERSON  
 D.A. WHITE  
 CHECKED BY..... A. ANDREW

INDEX 80  
 FOR TOPOGRAPHY SEE MARGINAL MAP AT LEFT  
 ENGINE CO. NO. 52  
 TOPOGRAPHY REVISED JAN. 1948 C.E.D.

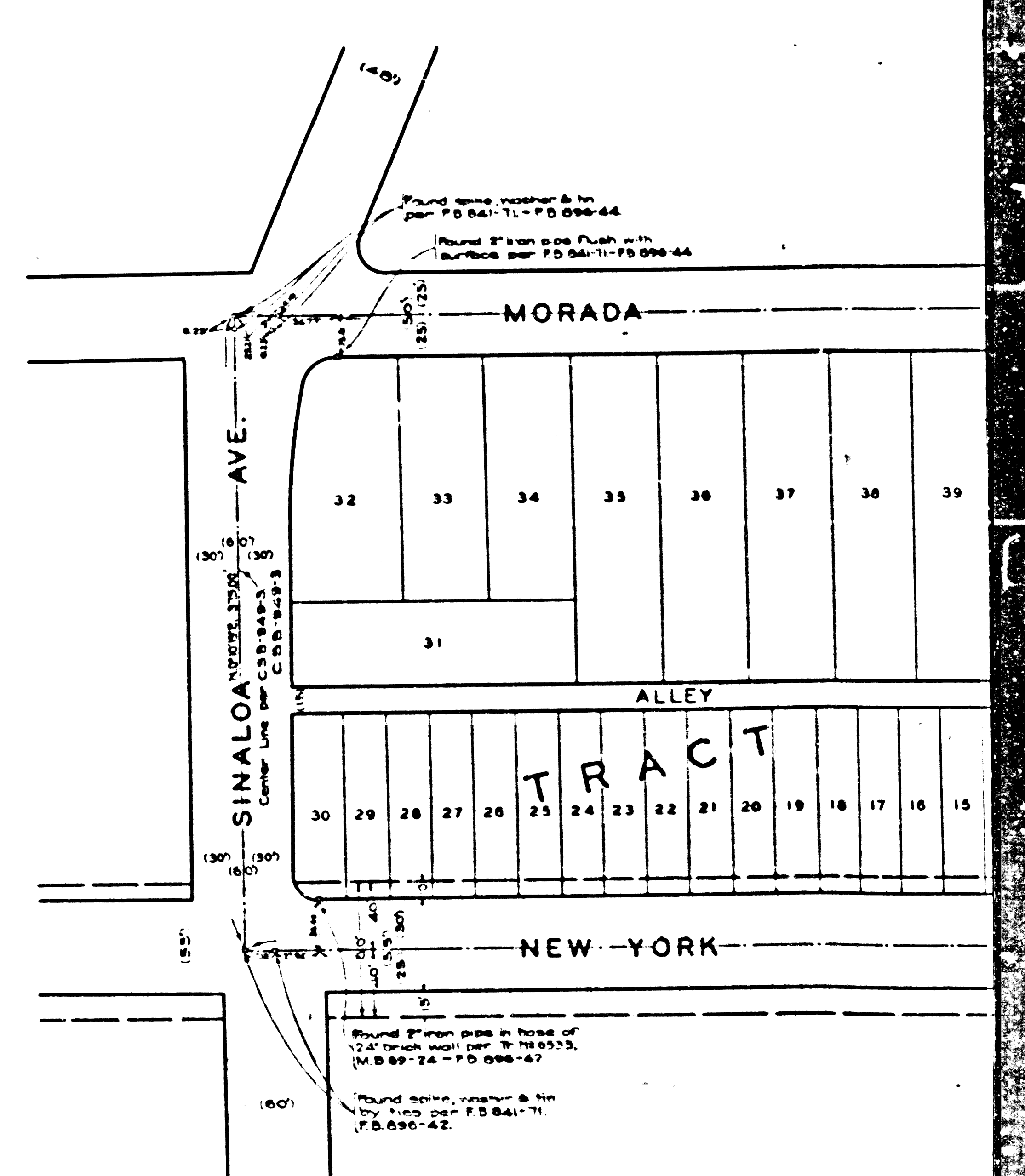
CSB-1913  
 A1 OF A 2



MARGINAL MAP  
SHOWING  
TOPOGRAPHY  
SCALE: 1 INCH = 10 FT.

DATUM - MEAN SEA LEVEL  
ELEVATIONS SHOWN HEREON ARE BASED ON  
THE LOS ANGELES COUNTY FLOOD CONTROL  
B.M. NR 90-76 (F.B.C. 1884-86) THE ELEVATION  
OF WHICH WAS DETERMINED FROM U.S.C.G.S.  
B.M. 2-172-1934 (U.S. 2941) BASED ON THE  
U.S.C. & G.S. 1934 ADJUSTMENT.  
ADDITIONAL TOPOGRAPHY ADDED TO THIS MAP  
IN JAN. 1948. E.L.D.

CSB-1913  
A20FA2



Found same corner & lot  
per F.D. 841-71 - F.D. 898-44  
Found same corner & lot  
per F.D. 841-71 - F.D. 898-44

Found same corner & lot  
per F.D. 841-71 - F.D. 898-44  
Found same corner & lot  
per F.D. 841-71 - F.D. 898-44