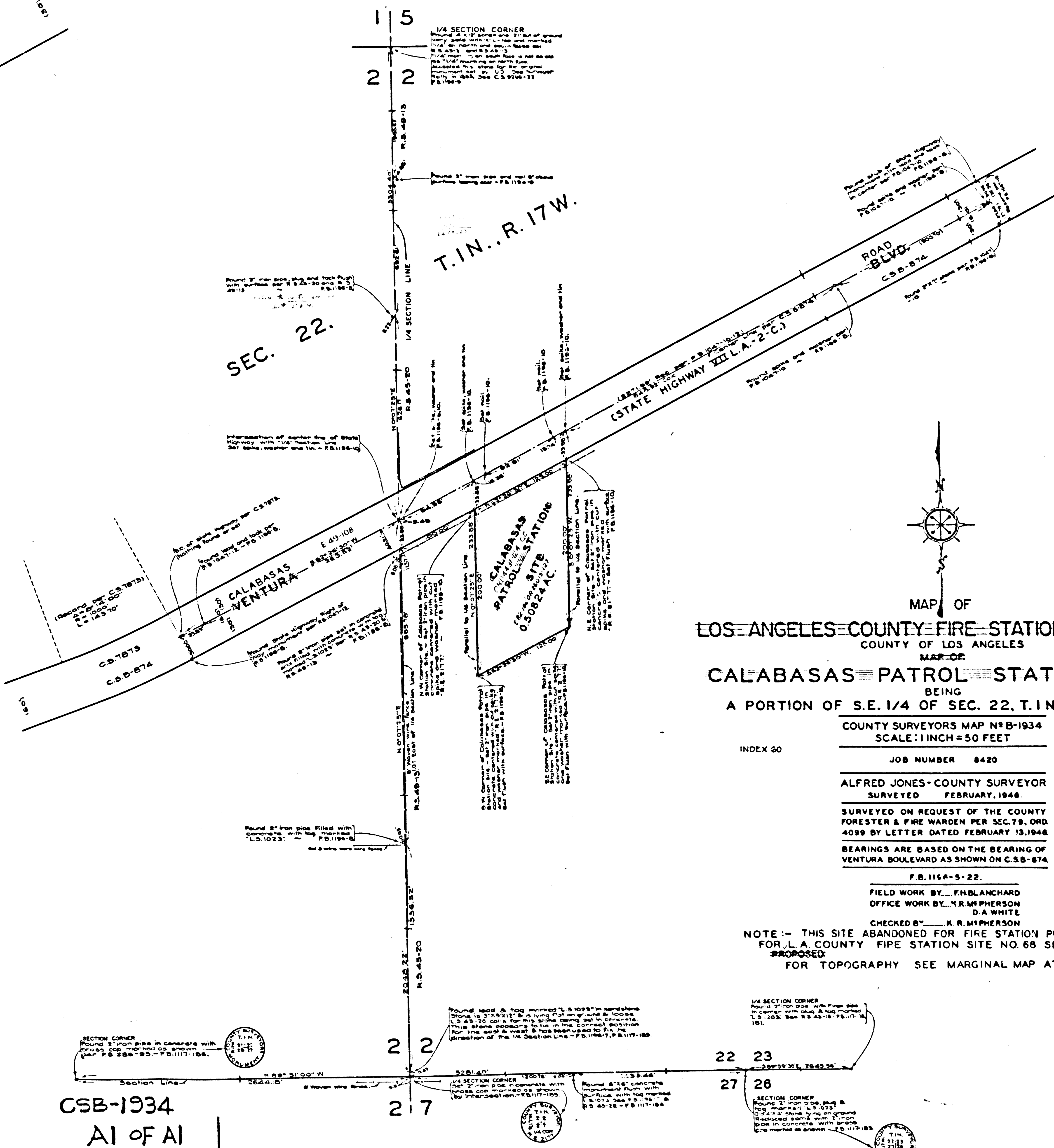


MARGINAL MAP
SHOWING
TOPOGRAPHY
SCALE: 1 INCH = 20 FT.
F.B. 1196-5-22.
PLATTED BY M.D. DARLING
TRACED BY D.A. WHITE
CHECKED BY H. BRADSTREET
DATUM - MEAN SEA LEVEL
ELEVATIONS SHOWN HEREON ARE BASED ON
THE 1928 U.S.C. & G.S. ADJUSTMENT OF U.S.C.S.
B.M. R.S. 20-1924 RESET 1935 (U.S. 782) L. 8558-13.



CSB-1934
A1 OF A1

MAP OF
LOS ANGELES COUNTY FIRE STATION SITE N° 68:
COUNTY OF LOS ANGELES
MAP OF
CALABASAS PATROL STATION SITE
BEING
A PORTION OF S.E. 1/4 OF SEC. 22, T.1N., R.17W., S.B.M.

COUNTY SURVEYORS MAP N° B-1934
SCALE: 1 INCH = 50 FEET

INDEX 60

JOB NUMBER 8420

ALFRED JONES - COUNTY SURVEYOR
SURVEYED FEBRUARY, 1946.

SURVEYED ON REQUEST OF THE COUNTY
FORESTER & FIRE WARDEN PER SEC. 79, ORD.
4099 BY LETTER DATED FEBRUARY 13, 1946.

BEARINGS ARE BASED ON THE BEARING OF
VENTURA BOULEVARD AS SHOWN ON C.S.B.-674.

F.B. 1156-5-22.

FIELD WORK BY F.H. BLANCHARD
OFFICE WORK BY K.R. M'PHERSON
D.A. WHITE

CHECKED BY K.R. M'PHERSON

NOTE: - THIS SITE ABANDONED FOR FIRE STATION PURPOSES
FOR L.A. COUNTY FIRE STATION SITE NO. 68 SEE C.S.B.-2955.
PROPOSED
FOR TOPOGRAPHY SEE MARGINAL MAP AT LEFT.

