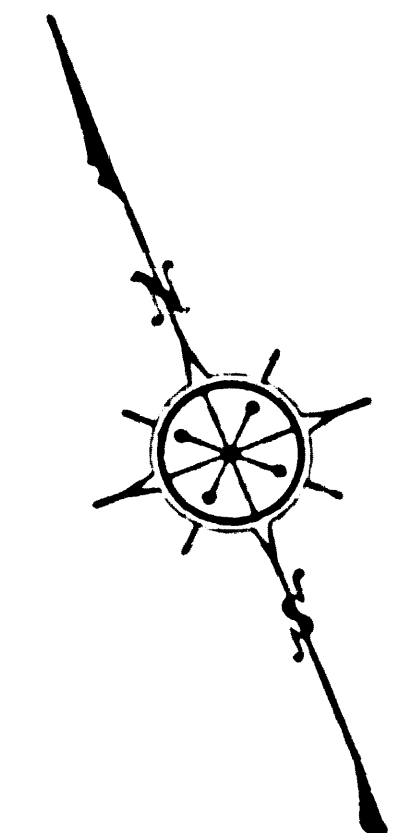
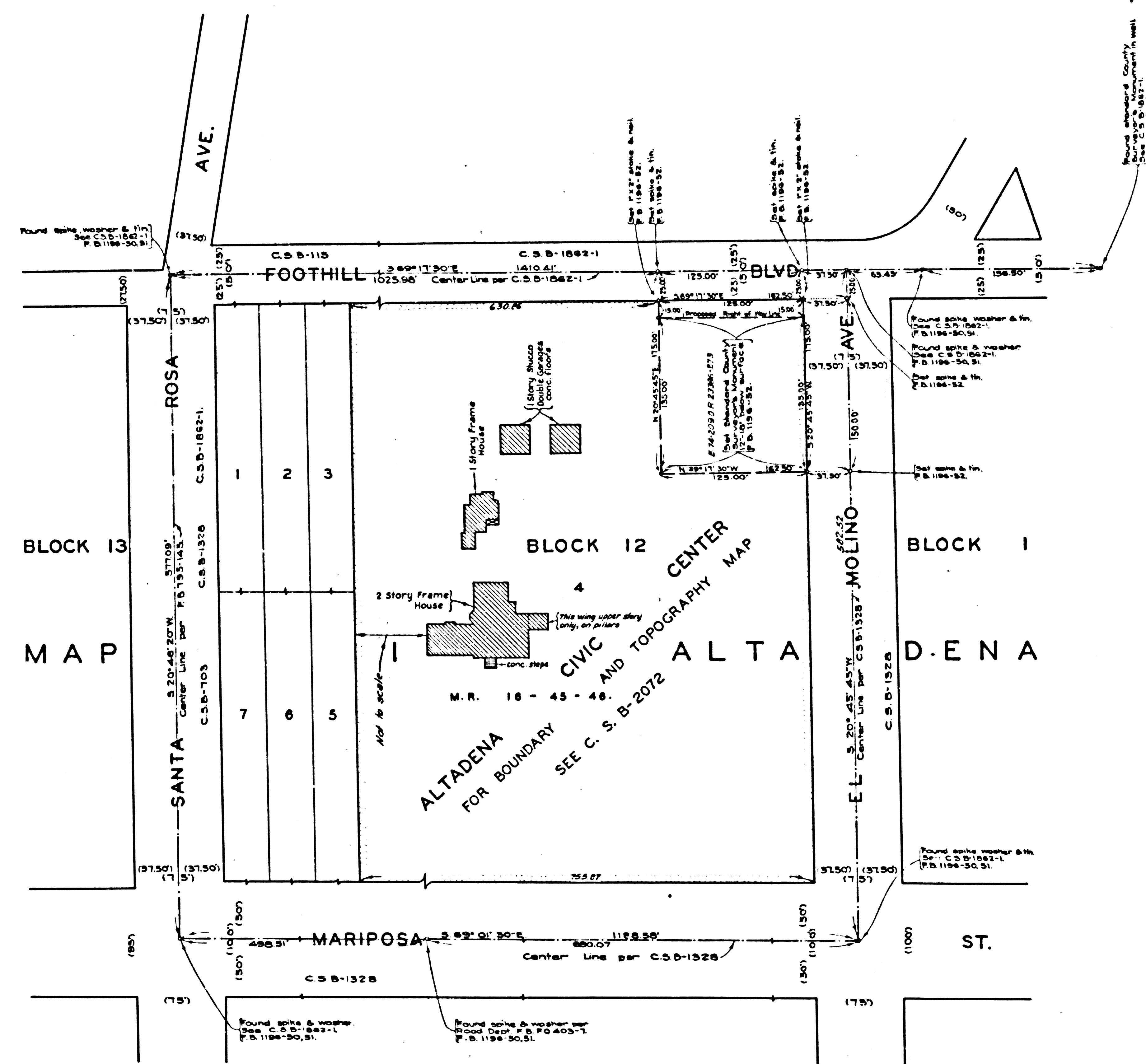
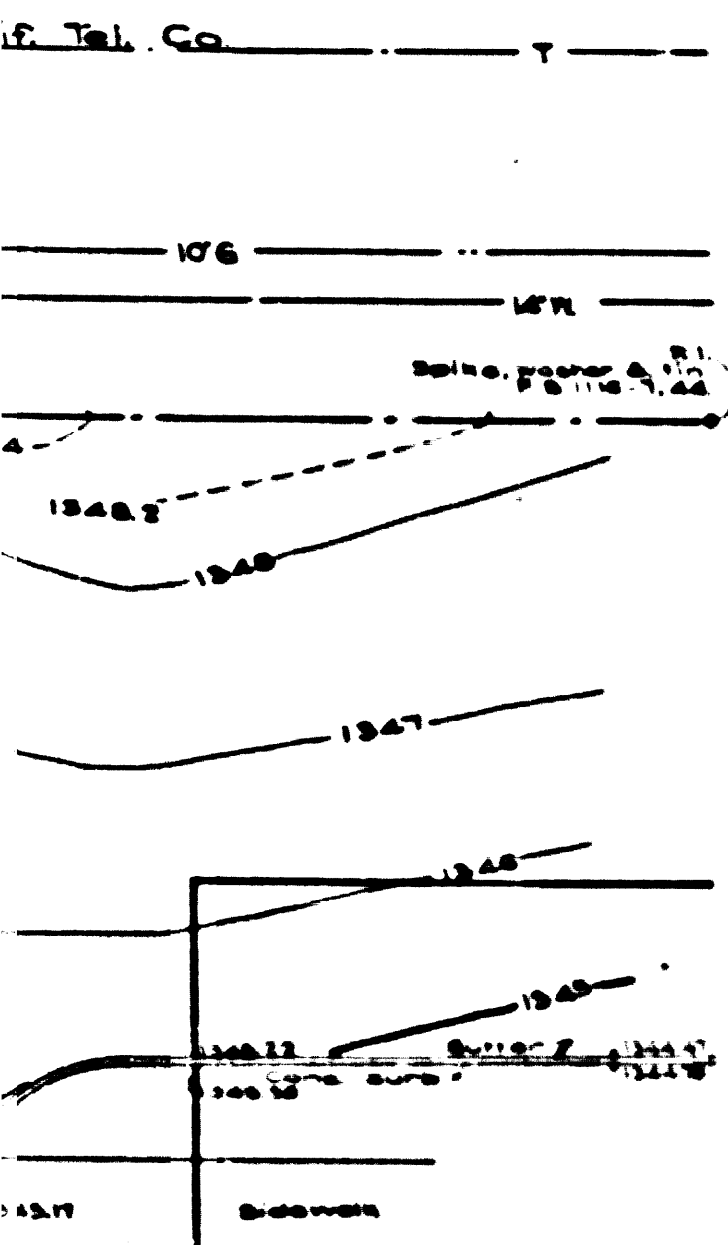


COMPL. SURVEY MAP No. B-1937



COUNTY OF LOS ANGELES
MAP OF
COUNTY BUILDING SITE
IN
ALTADENA

COUNTY SURVEYORS MAP NO. B-1937
SCALE: 1 IN. = 50 FT.

JOB NUMBER 8422 INDEX 50
ALFRED JONES - COUNTY SURVEYOR
SURVEYED..... MARCH, 1948.

SURVEYED ON REQUEST OF THE CHIEF
MECHANICAL ENGINEER UNDER SEC. 79,
ORD. 4099, BY LETTER DATED FEB. 20, 1948.

BEARINGS ARE BASED ON LOS ANGELES
COUNTY COORDINATE SYSTEM LAMBERT
GRID (SECC.S.9423) BY TIE TO C.S.B-1882-1

F.B. 1198-49-78
FIELD WORK BY...G.W. KLEINECK
OFFICE WORK BY...A. A. ROESER
D.A. WHITE
CHECKED BY...A. A. ROESER

Revised May 1948 C.E.D.

MARGINAL MAP
SHOWING
TOPOGRAPHY

SCALE: 1 INCH = 10 FT.
F.B. 1118-44-48 - F.B. 1198-49-78.
FIELD WORK BY...G.W. KLEINECK
H.F. NAUMANN
OFFICE WORK BY...M.D. DARLING
D.A. WHITE
CHECKED BY...L.R. FREEMAN

DATUM - MEAN SEA LEVEL SEE NOTE
ELEVATIONS SHOWN HEREON ARE BASED ON
B.M. NO. 29 (L.B. 788-28) THE ELEVATION
OF WHICH WAS DETERMINED FROM U.S.G.S.
AT PIEDMONT AND WAREHO (U.S. 886) USING
THE ROAD DEPARTMENT ADJUSTED ELEVATION
PER ROAD DEPARTMENT B.C. 570.

NOTE: SUBTRACT 0.44 FT. FROM ELEVATIONS
SHOWN HEREON TO CONVERT TO MEAN SEA
LEVEL DATUM BASED ON THE 1934 ADJUSTED
ELEVATIONS OF U.S. 2957 AND 2958 PER
F.B. 1198 PAGE 95.

CSB-1937
A1 OF A2

COMPL. SURVEY MAP No. B-1937

