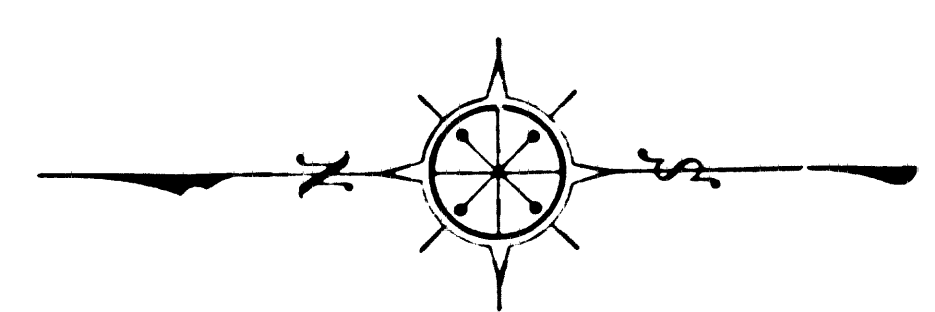
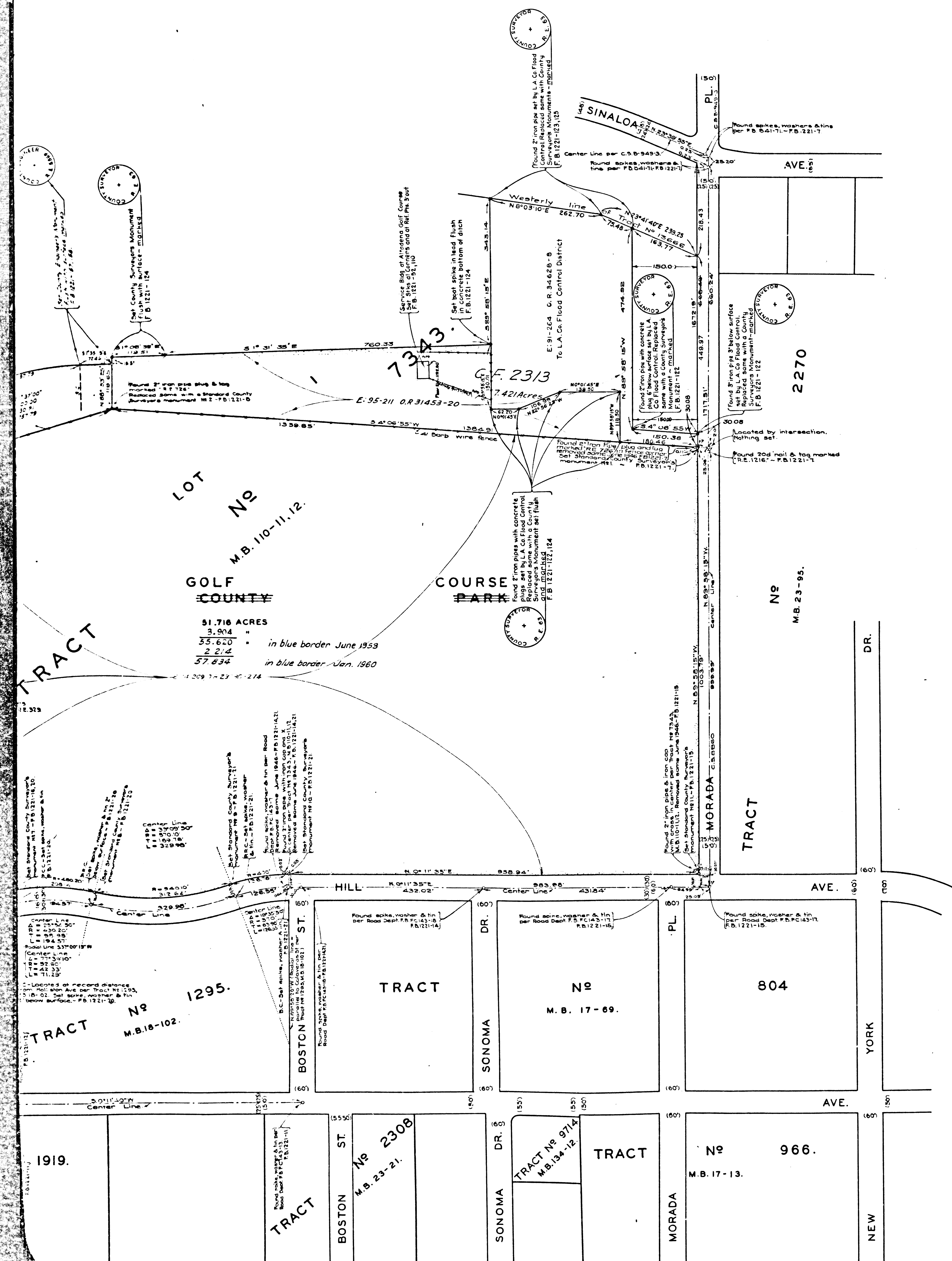


PLAN - E. CH. PLAN ENCLOSURE 2 PLAN



ALTADENA GOLF COURSE
 COUNTY OF LOS ANGELES
 MAP OF
PROPOSED COUNTY PARK AT ALTADENA
 (FORMERLY ALTADENA COUNTRY CLUB PROPERTY)
 BEING A PORTION OF TRACT No 7343 - M.B. 110-11.12.

COUNTY SURVEYORS MAP No B-1945.
 SCALE: 1 INCH = 100 FEET

JOB NUMBER 8431
 ALFRED JONES-COUNTY SURVEYOR
 SURVEYED MAY - JUNE, 1946.
 SURVEYED UNDER INSTRUCTIONS OF THE
 BOARD OF SUPERVISORS PER ORDER DATED
 APRIL 23, 1946.
 BEARINGS ARE BASED ON THE BEARING OF
 MENDOCINO ST. AS SHOWN ON C.S.B-949-3
 F.B. 1221-5-22.
 FIELD WORK BY F.H. BLANCHARD
 OFFICE WORK BY K.R. M'PHERSON
 D.A. WHITE
 CHECKED BY A.A. ROESER

FOR TOPOGRAPHY SEE C.S.B-1984-1, 2

Note: Standard County Surveyor's Monument is a 2" iron pipe set in concrete with brass cap marked

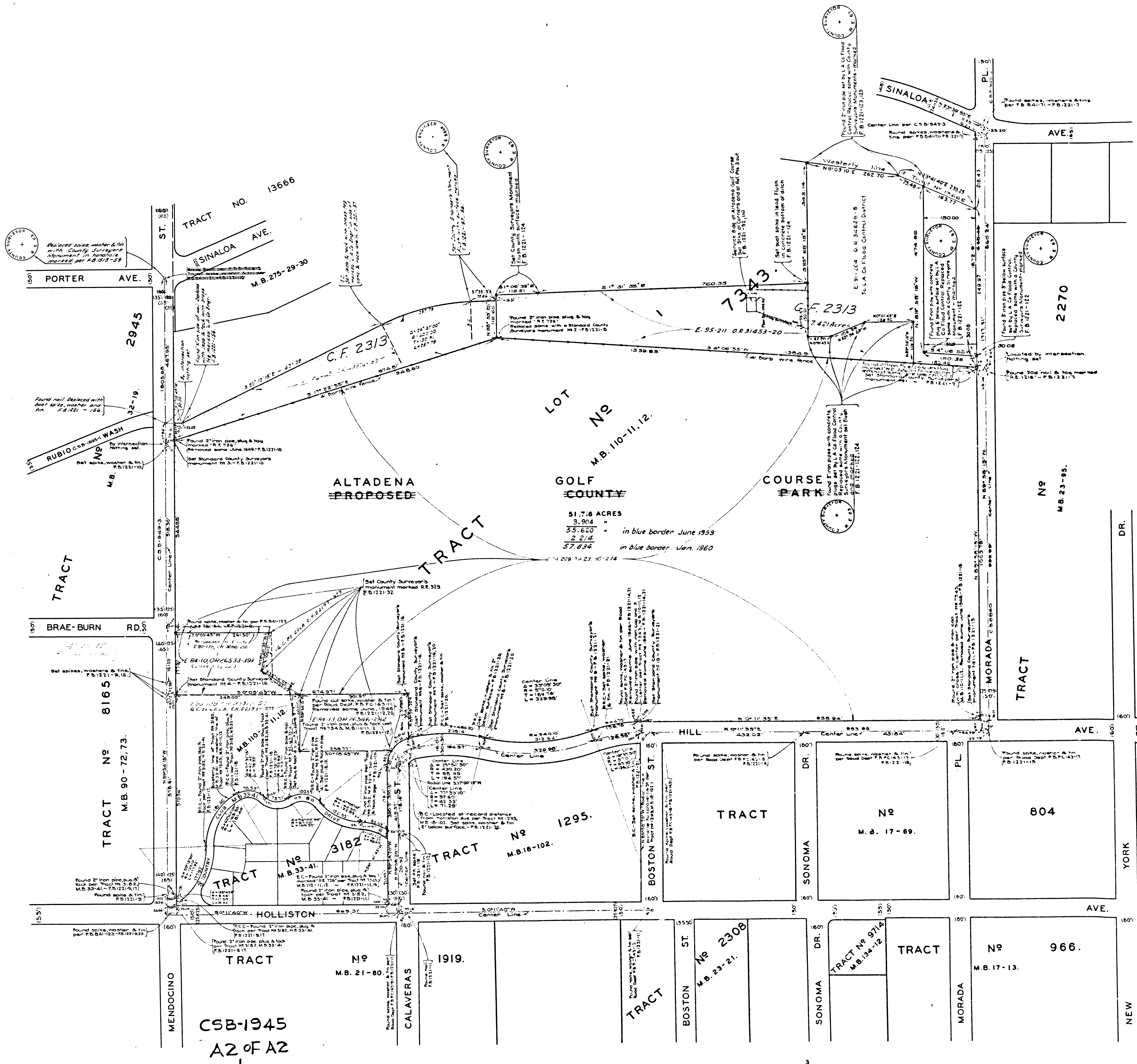
BOUNDARY IN NORTHWESTERLY CORNER
 REVISED FEB. 10, 1948. DAW
 REVISED JUNE 1950 C.E.D.
 REVISED JUNE 1953 R.L.G.
 Name change by Board order 10/24/53
 Revised November 1959 T.M.B.

CSB-1945
 A1 OF A2

CONTRACT ENVELOPE 2 MAP NO. B-1945

COMPLIANCE SURVEY MAP NO. B-1932

COMPLIANCE SURVEY MAP NO. B-1932



CSB-1945
A2 OF A2