

ALLEY

FULLER

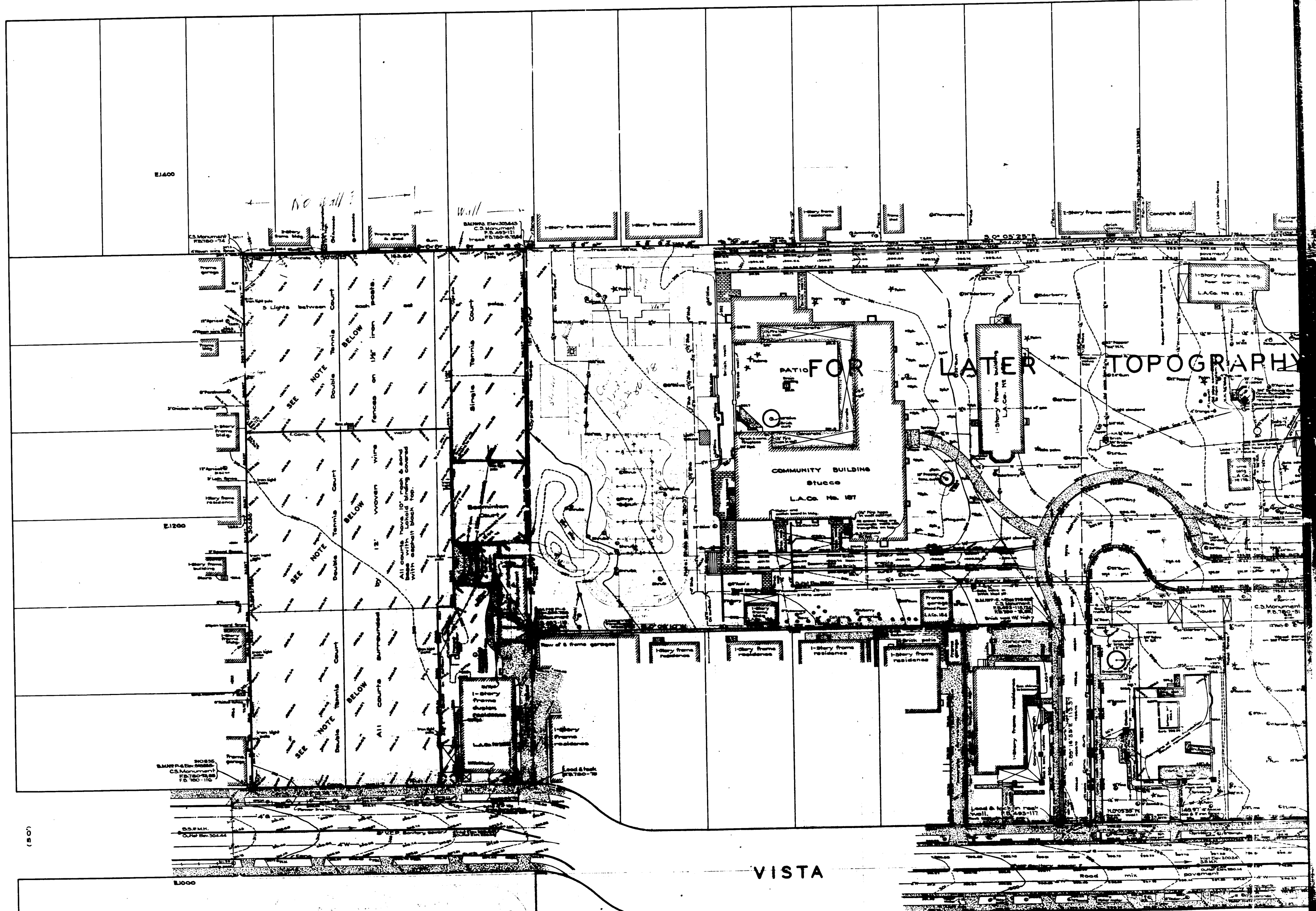
AVE.

MARTEL
AVE.

ALLEY

FOUNTAIN

VISTA



TENNIS COURTS ELEVATIONS REVISED PER F.B. 780-15-23
 FOR ORIGINAL ELEVATIONS SEE PLANE TABLE SHEET G-235
 REVISION BY Y. ITO - NOV. 1950

CSB 1999-1
 A1 OF A3

AVE.

BOULEVARD

LATER TOPOGRAPHY

SEE C.S.B-1999-2

PARKING

LOT

LOS ANGELES COUNTY
ROAD DEPARTMENT WAREHOUSE SITE

MARTEL
AVE.
E 1200

PL

MONICA

ST.

SANTA

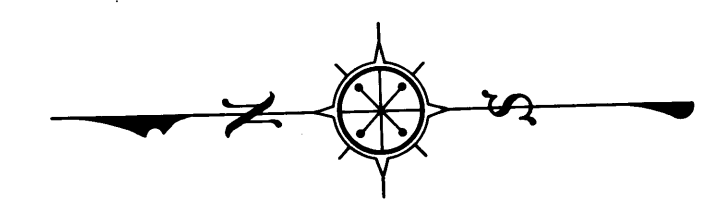
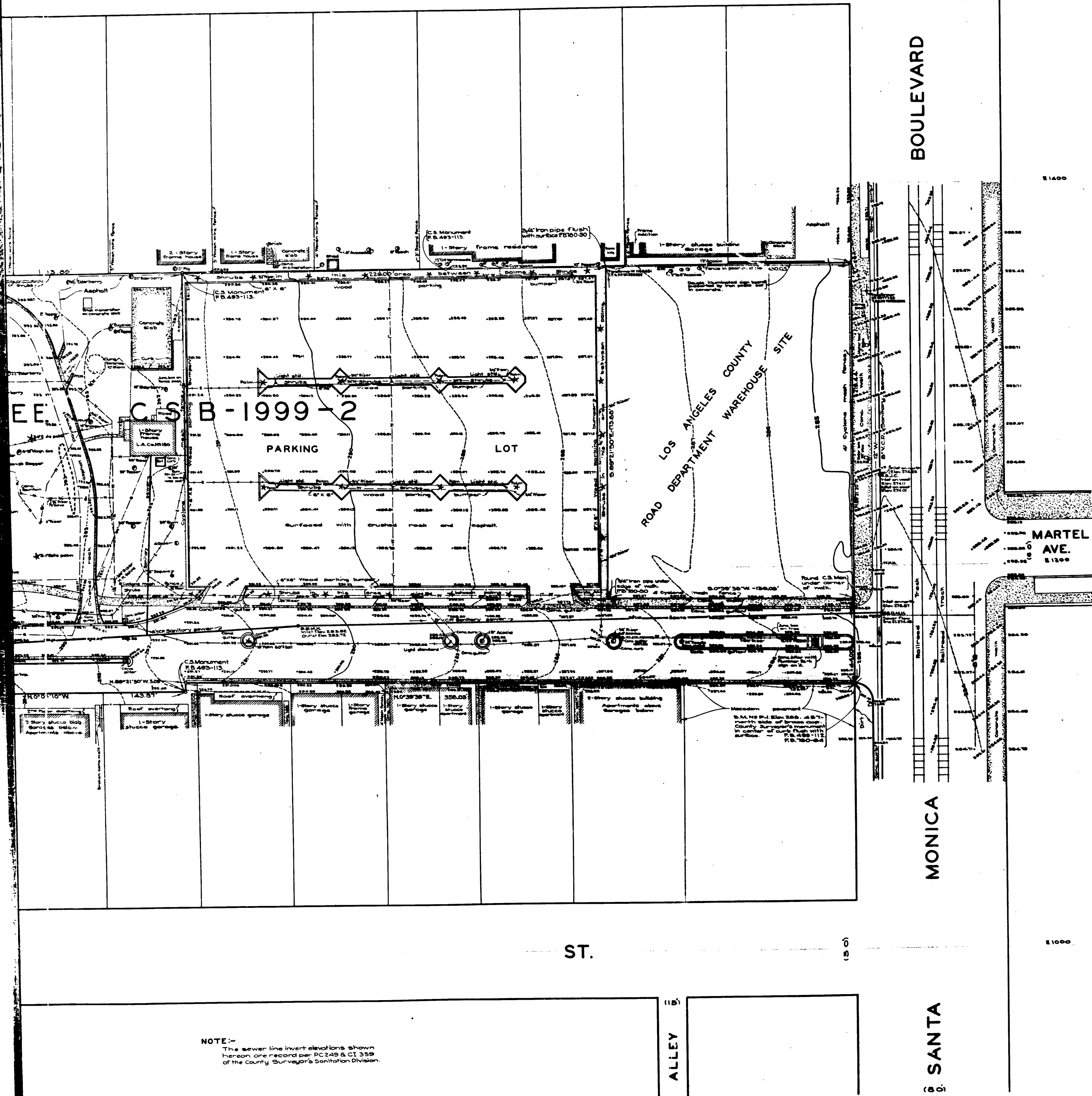
NOTE:
The sewer line invert elevations shown
hereon are based upon PC 249 & CI 339
of the County Surveyor's Sanitation Division.

CSB 1999-1
A2 OF A3

ALLEY

AVE.

BOULEVARD



COUNTY OF LOS ANGELES
 TOPOGRAPHIC MAP
 OF
PLUMMER PARK

COUNTY SURVEYORS MAP NO B-1999
 SHEET 1 OF 2 SHEETS
 SCALE - 1 INCH = 20 FT.

JOB NUMBER 5227

ALFRED JONES-COUNTY SURVEYOR
 SURVEYED JUNE, 1947.

SURVEYED ON REQUEST OF THE CHIEF
 MECHANICAL ENGINEER UNDER SEC. 79
 ORD. 4099, BY LETTER DATED JUNE 5, 1947.

BEARINGS ARE BASED ON THE BEARING OF
 SANTA MONICA BOULEVARD PER C.S.B-1311

PLANE TABLE SHEETS G-254 & G-255
 F.B. 493-11H24 & F.B. 780-5-85

FIELD WORK BY..... R.C. BOWERS
 C.A. BENSON

OFFICE WORK BY..... D.A. WHITE

CHECKED BY..... H.D. HEBER
 L. DETILLA

DATUM - MEAN SEA LEVEL
 ELEVATIONS SHOWN HEREON ARE BASED UPON B.M. 5-1
 (F.B. 853-181) THE ELEVATION OF WHICH WAS DETERMINED
 FROM THE U.S.C. & G.S. B.M. 5-109 (U.S. 2913) BASED
 UPON THE U.S.C. & G.S. ADJUSTMENT OF 1934.

LEGEND

- POWER POLES
- TELEPHONE POLES
- GUY WIRES
- WATER HYDRANTS
- SANITARY SEWER MANHOLE
- LIGHT STANDARD

FOR BOUNDARY SURVEY SEE C.S.B-1311.
 REVISED MAY, 1950 - D.A.W.
 FOR LATER TOPOGRAPHY SEE C.S.B-1999-2

CSB 1999-1
 A3 OF A3

NOTE:-
 The sewer line invert elevations shown
 hereon are record per PC 249 & CI 359
 of the County Surveyor's Sanitation Division.