

N 89° 34' 50" W 1264.83 per C.S.B. 1058-1 to N & Cor. Sec 17-T.4 N. R.17 W.
See Index Map - C.S.B. 2050-2

8 9
17 10
E 600.01
N 17° 05' E

1/4 Section Line

1/4 Section Line

SEC. 17 T.4 N. R.17 W.

Center line Z - MARTINEZ

GRANDE

S. E. 1/4

CANYON

ROAD

PI. No. 115 - 116 - 117 - 118
Located by observation
on the ground
at the intersection
of the center line
of the road and
the center line
of the section
line.

PI. No. 20 - 21 - 22 - 23
Located by observation
on the ground
at the intersection
of the center line
of the road and
the center line
of the section
line.

PI. No. 24 - 25 - 26 - 27
Located by observation
on the ground
at the intersection
of the center line
of the road and
the center line
of the section
line.

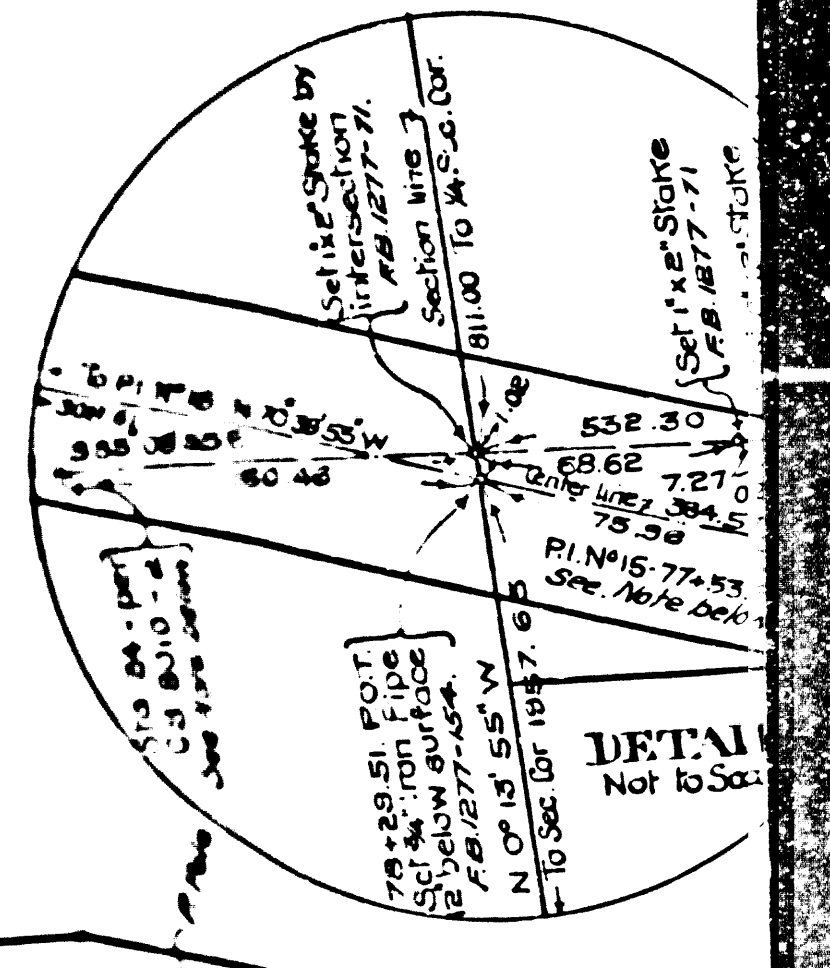
PI. No. 28 - 29 - 30 - 31
Located by observation
on the ground
at the intersection
of the center line
of the road and
the center line
of the section
line.

PI. No. 32 - 33 - 34 - 35
Located by observation
on the ground
at the intersection
of the center line
of the road and
the center line
of the section
line.

PI. No. 36 - 37 - 38 - 39
Located by observation
on the ground
at the intersection
of the center line
of the road and
the center line
of the section
line.

SECTION CO
Found by
observation
on the ground
at the intersection
of the center line
of the road and
the center line
of the section
line.

CSB-2050-2
A2 of A4



SEC. 17 T.4 N. R.17 W.

N. W. 1/4

OF

MARTINEZ

GRAND

CANYON

ROAD

C.S. 8010-2

S. W. 1/4 OF SEC. 17 T.4 N. R.17 W.

Pl. No. 05
Located by comparison between Sta. 27
and Sta. 100. E. surface from Pl. No. 11
(below surface) as shown on map of
C.S. 8010-2. The location of
surface in vicinity of Sta. 27 is
shown on map of C.S. 8010-2.

A = 16° 02' 00"
R = 500.00
L = 70.48
L = 199.93

A = 18° 25' 45"
R = 500.00
L = 80.30
L = 180.83

A = 22° 21' 40"
R = 500.00
L = 97.33
L = 134.06

Pl. No. 11-102-113-114
Located by comparison between Sta. 27
and Sta. 100. E. surface from Pl. No. 11
(below surface) as shown on map of
C.S. 8010-2. The location of
surface in vicinity of Sta. 27 is
shown on map of C.S. 8010-2.

