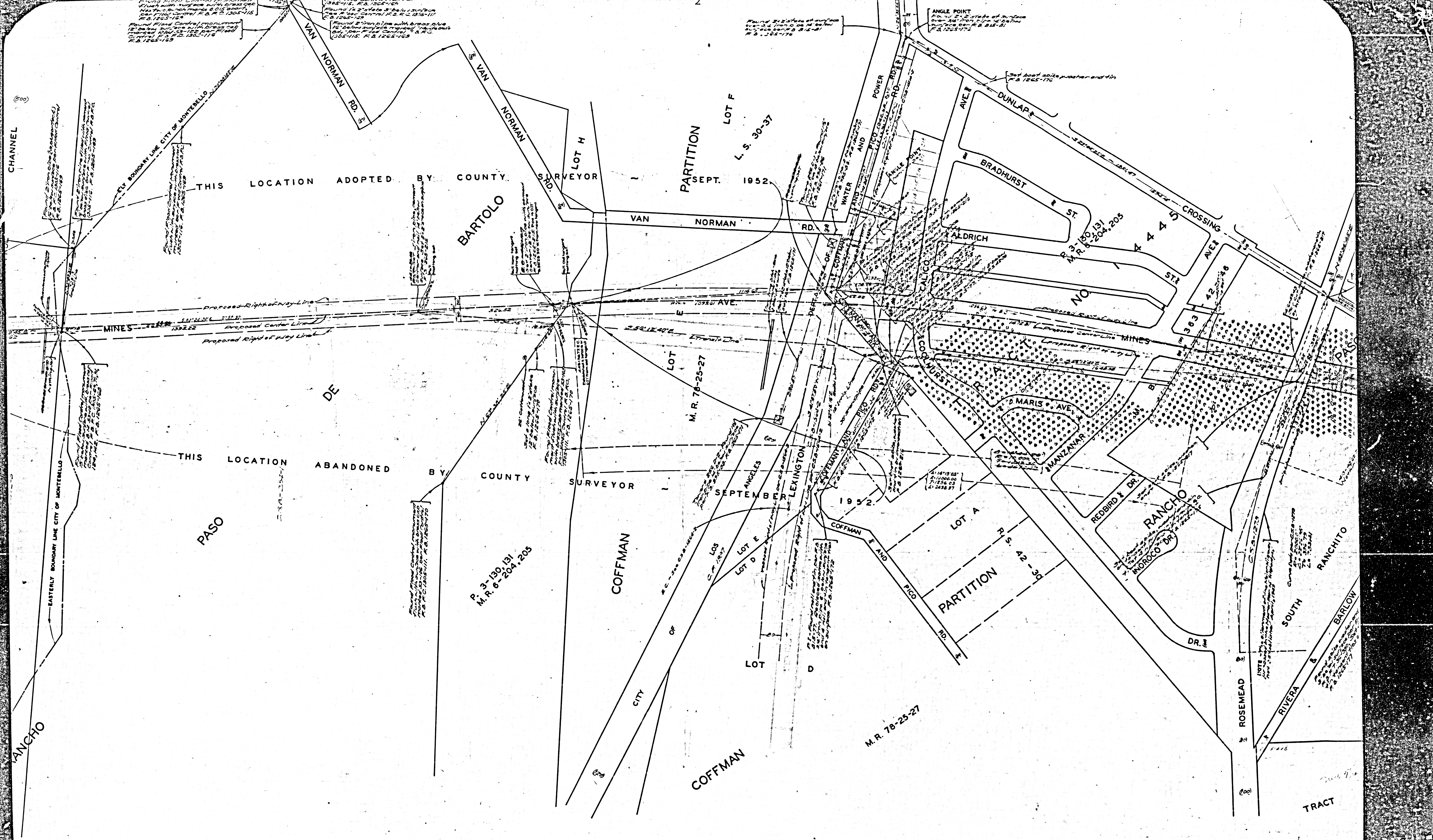


COUNTY OF LOS ANGELES  
 MAP OF  
**MINES AVENUE**  
 FROM  
 IMPERIAL HIGHWAY  
 TO  
 BLUFF ROAD  
 COUNTY SURVEYORS MAP NO B-2051  
 SHEET NO 5 OF 5 SHEETS  
 SCALE: 1 INCH = 100 FT.

JOB NUMBER 8458  
 C.E. ARNOLD - COUNTY SURVEYOR  
 SURVEYED AUG. 1947 - FEB. 1948  
 SURVEYED ON REQUEST OF THE REGIONAL  
 PLANNING COMMISSION UNDER SEC. 79,  
 ORD. 4089, BY LETTER DATED MAR. 6, 1947,  
 AND AS AUTHORIZED BY THE BOARD  
 OF SUPERVISORS IN THEIR ORDER OF  
 JUNE 1, 1938  
 BEARINGS ARE BASED ON THE CALIFORNIA  
 COORDINATE SYSTEM, ZONE 7, PER CHAPTER  
 1307, STATUTES 1947, SEE C.S. 8423  
 F.B. 1268-88-193  
 F.B. 1265-8-93; 151-218  
 FIELD WORK BY . . . . . D.E. HOLMES  
 OFFICE WORK . . . . . A.N. HELLSTROM  
 CHECKED BY . . . . . C.W. COE  
 . . . . . A.N. DREW

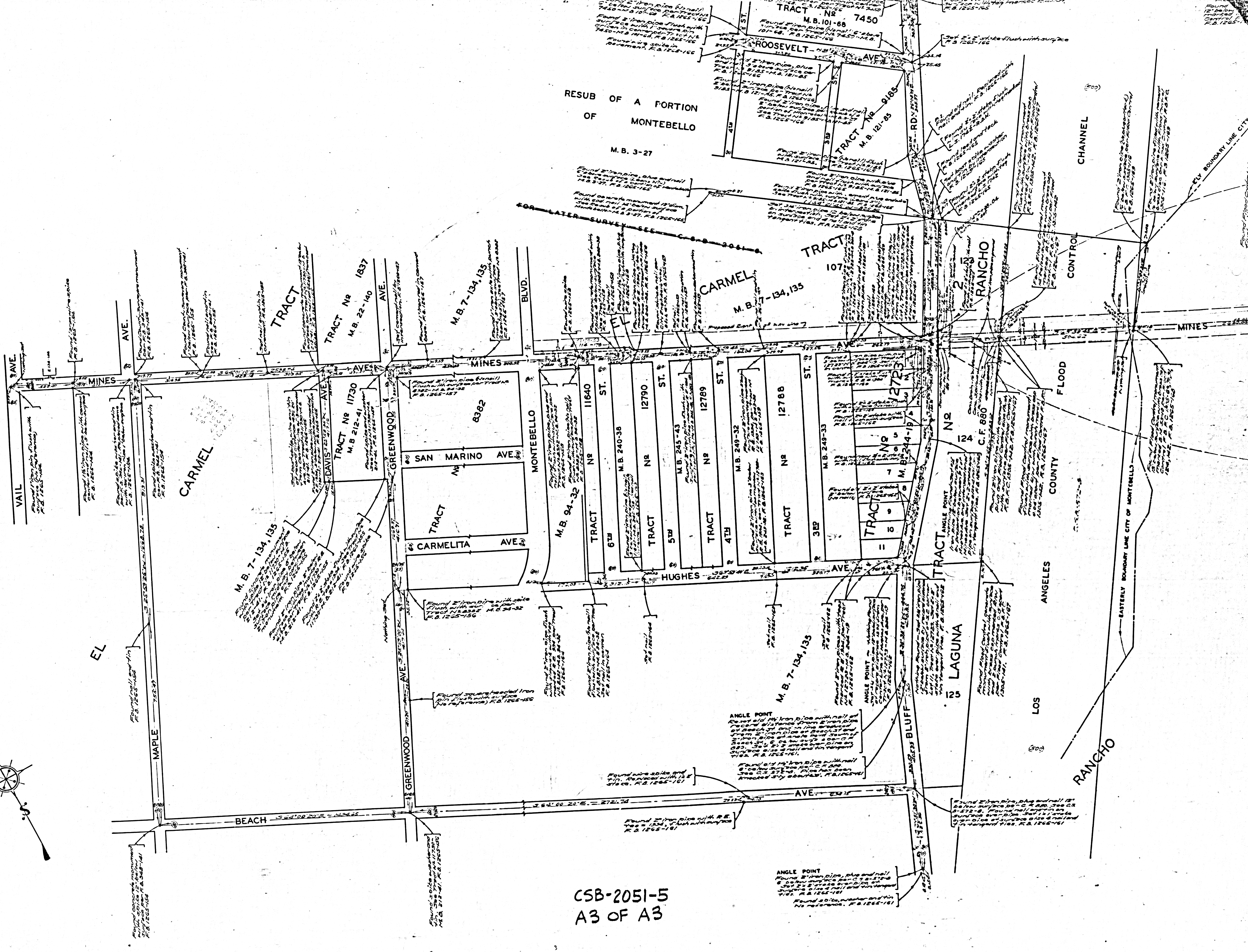
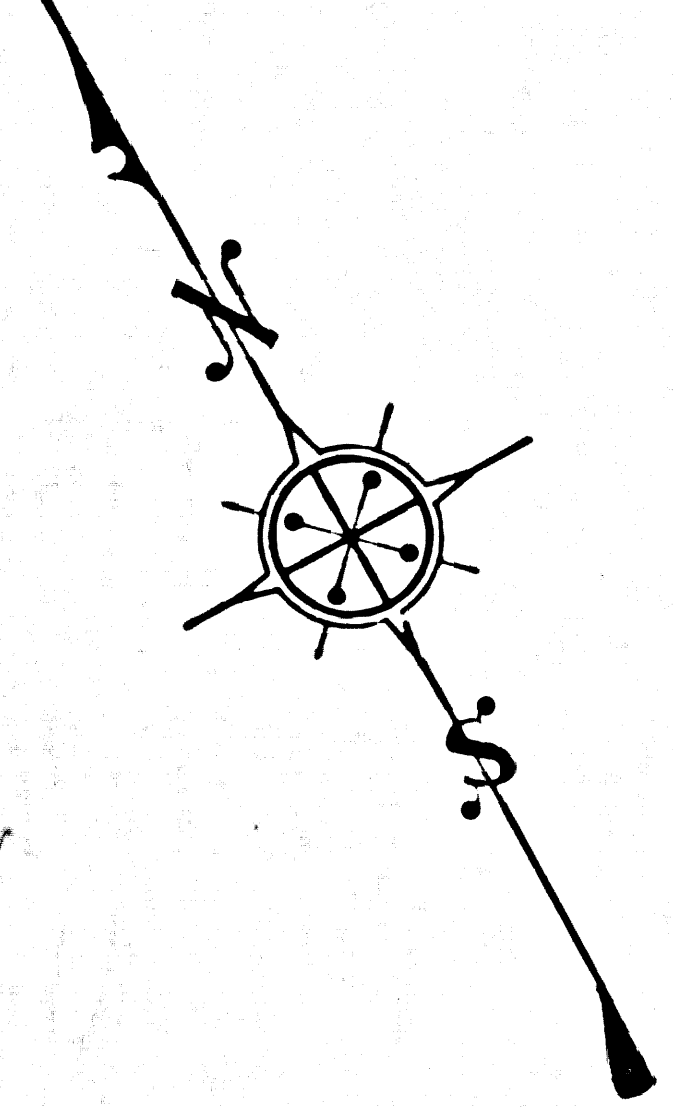
CSB-2051-5  
 A1 OF A3

MARGINAL MAP  
 NO SCALE



THIS LOCATION ADOPTED BY COUNTY SURVEYOR

THIS LOCATION ABANDONED BY COUNTY SURVEYOR



CSB-2051-5  
A3 OF A3