

COUNTY OF LOS ANGELES
 MAP OF
GALLATIN ROAD
 FROM
 LAKEWOOD BOULEVARD
 TO
 PARAMOUNT BOULEVARD
 COUNTY SURVEYORS MAP NO. B-2061
 SCALE - 1 INCH = 50 FT.

JOB NUMBER 8458
 C. E. ARNOLD - COUNTY SURVEYOR
 SURVEYED JULY & AUGUST 1947

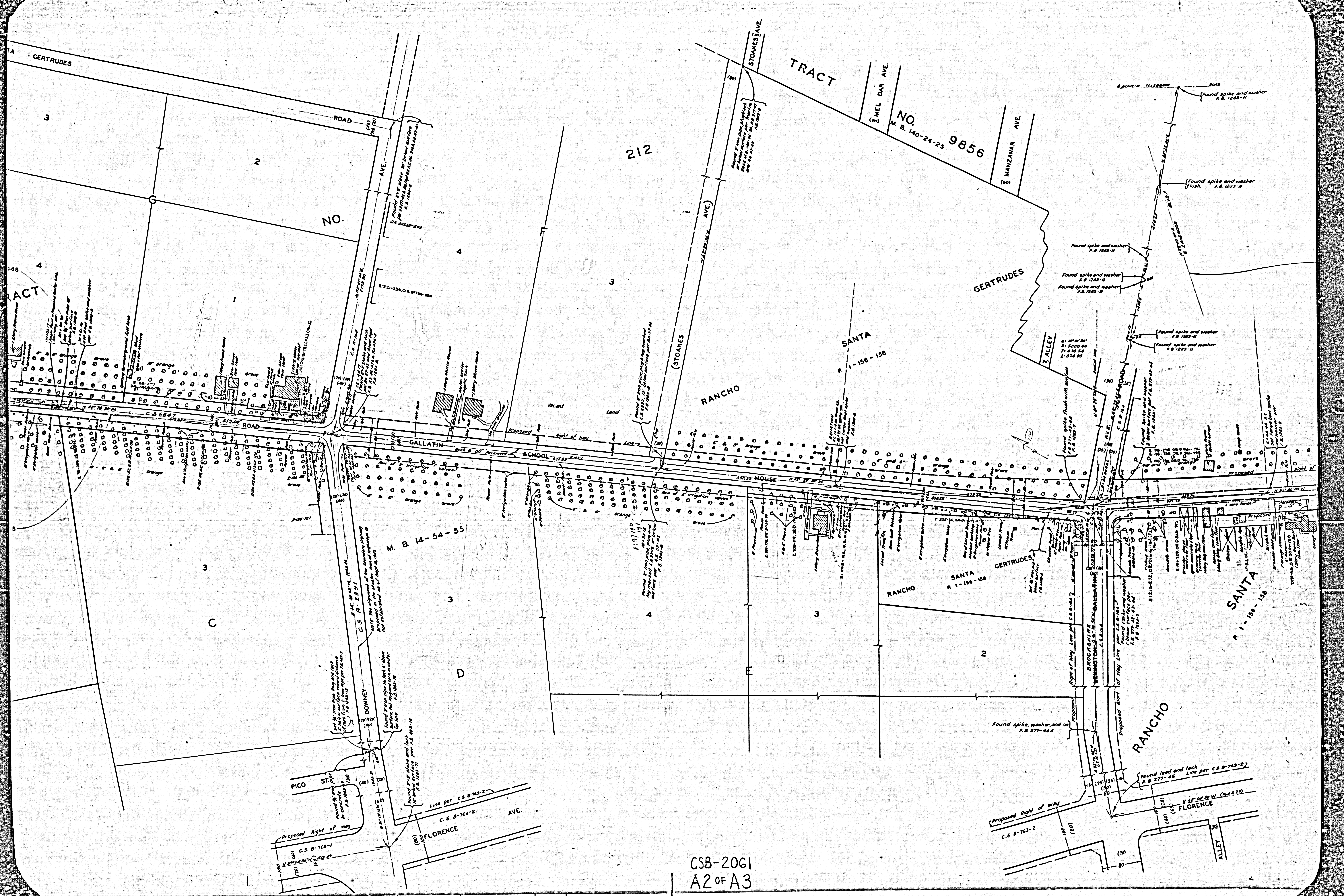
SURVEYED ON REQUEST OF THE REGIONAL PLANNING COMMISSION
 UNDER SEC. 79 ORD 4099 BY LETTER DATED APRIL 14, 1947 AND
 AS AUTHORIZED BY THE BOARD OF SUPERVISORS IN THEIR ORDER
 OF JUNE 1, 1938.

BEARINGS ARE BASED ON THE BEARING OF
 GALLATIN SCHOOL HOUSE ROAD PER C.S. B-164

F. B. 1263-5-71
 FIELD WORK BY G. M. NICHOLS
 OFFICIAL WORK BY C. E. DROWN
 CHECKED BY A. H. DREW

INDEX-36-33

CSB-2061
 A1 OF A3



CSB-2061
A2 of A3

1865-DIV. 2-AM. PROYEVURIZ. YIMUOC

1865-DIV. 2-AM. PROYEVURIZ. YIMUOC

C.S. B-1644-2

BANGLE ROAD

BLVD.
Found spike washer and tin
for P.B. 456-13-7
P.B. 1281-10

Found cut spike washer and tin
for P.B. 456-13-7
P.B. 1281-10

Comp. Drawing

Found spike washer and tin
for P.B. 456-13-7
P.B. 1281-10

ANGLE POINT
Found spike washer and tin
for P.B. 456-13-7
P.B. 1281-10

RANCHO

FOSTER BRIDGE
BLVD.

GALLATIN C.S. 667-7-472-76

SCHOOL

SANTA

PARAMOUNT
PROPOSED

C.S. B-763-1
FLORENCE

CSB-2061
A3 OF A3

GERTRUDES

THIS LOCATION ADOPTED BY COUNTY SURVEYOR OCT. 1948

TRACT

THIS LOCATION ABANDONED BY COUNTY SURVEYOR OCT. 1948

P. 1-156-158

SANTA GERTRUDES

3

2

4

3

C