

COUNTY OF LOS ANGELES
 MAP OF
WOODRUFF AVENUE
 SHOWING
**THE INTERSECTION OF LOS COYOTES
 DIAGONAL AND SPRING STREET**

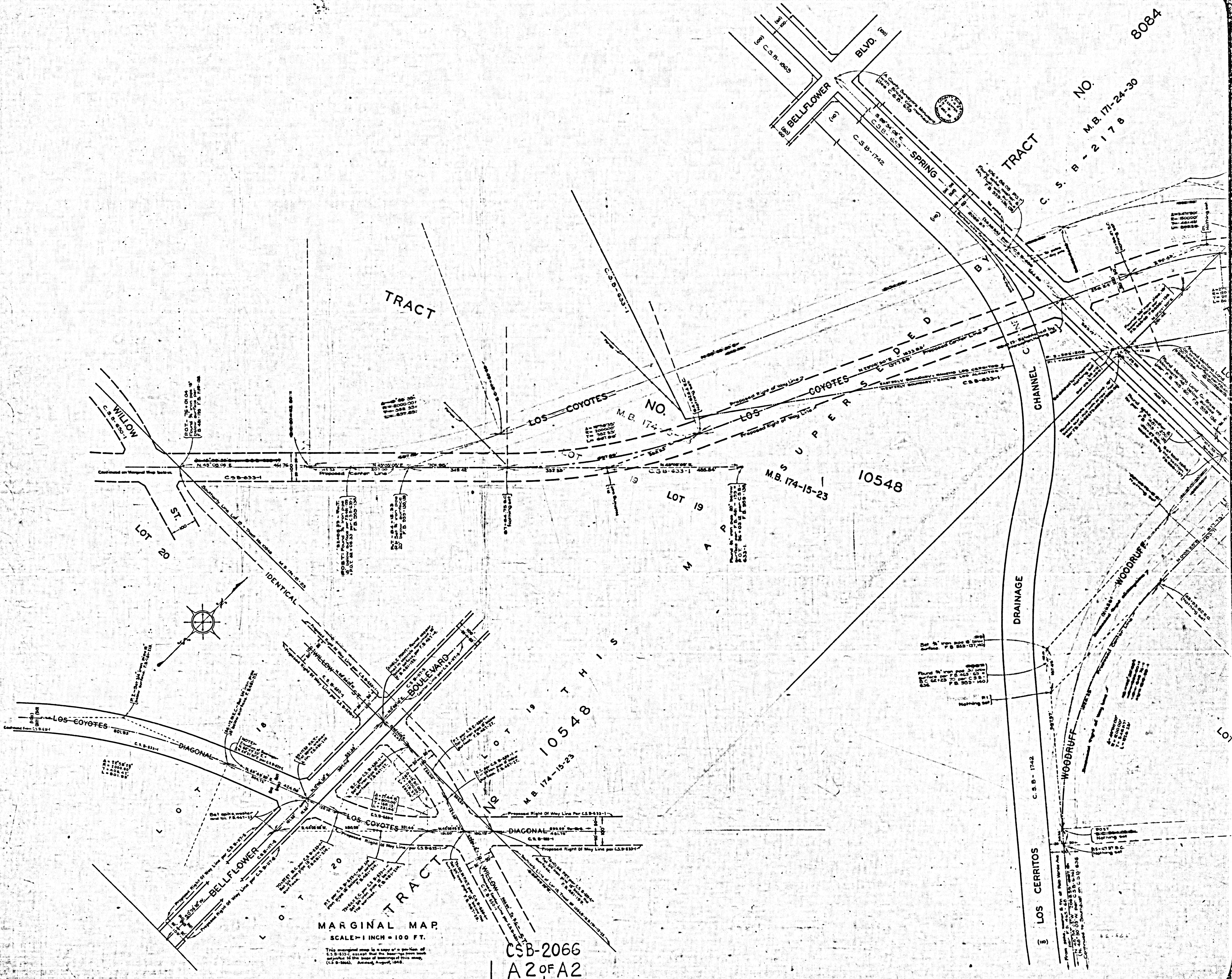
COUNTY SURVEYORS - MAP NO. B-2066
 SCALE - 1 INCH = 100 FT.

JOB NUMBER 6247
 ALFRED JONES - COUNTY SURVEYOR
 SURVEYED - SEPTEMBER 1947
 SURVEYED UNDER INSTRUCTIONS OF THE
 BOARD OF SUPERVISORS PER ORDER DATED
 APRIL 14, 1942
 BEARINGS ARE BASED ON THE LOS ANGELES
 COUNTY COORDINATE SYSTEM, LAMBERT
 GRID, CENTRAL MERIDIAN 118° 20' WEST -
 SEE C.S.B. 9423
 F.B. 959-03-142
 FIELD WORK BY G. H. NICHOLS
 OFFICE WORK BY R. R. MATHERSON
 C. J. GALLI
 CHECKED BY R. R. MATHERSON
 Revised August 1948 - 12 P.M.
 SEE C.S.B.-2178.

THIS MAP
 IS
 SUPERSEDED
 BY
 C.S.B.-2178

CSB-2066
 A1 OF A2

COMPLA PROGRESS THROUGH



8084

NO. M.B. 171-24-30
C.S.B. - 2178

TRACT

LOS COYOTES NO. M.B. 174-15-23

LOT 19
MARGINAL MAP
M.B. 174-15-23
10548

LOT 20

IDENTICAL

WILSON BOULEVARD

LOT 19
MARGINAL MAP
M.B. 174-15-23
10548

MARGINAL MAP
SCALE - 1 INCH = 100 FT.

CSB-2066
A2 OF A2

DRAINAGE CHANNEL

LOS CERRITOS

WOODRUFF

WOODRUFF

C.S.B. - 1742

This marginal map is a copy of a portion of C.S.B. 2066, except that the bearings have been adjusted to the base of accuracy of this map. (C.S.B. 2066), Assayed August, 1948.