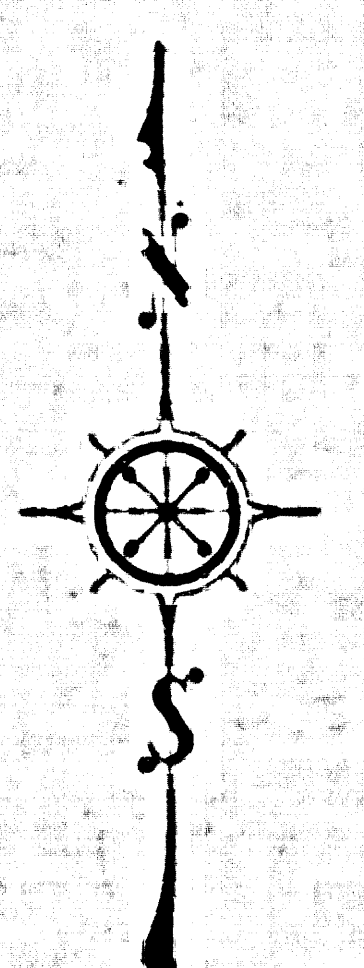


1805-6 ON 94M ROYALTY YTHUCCO



COUNTY OF LOS ANGELES
 MAP OF
FLOWER AVENUE
 FROM
 WOODRUFF AVENUE
 TO
 BIXBY AVENUE
 COUNTY SURVEYORS MAP NO. B-2067

INDEX 33

SCALE: - 1 INCH = 50 FT.

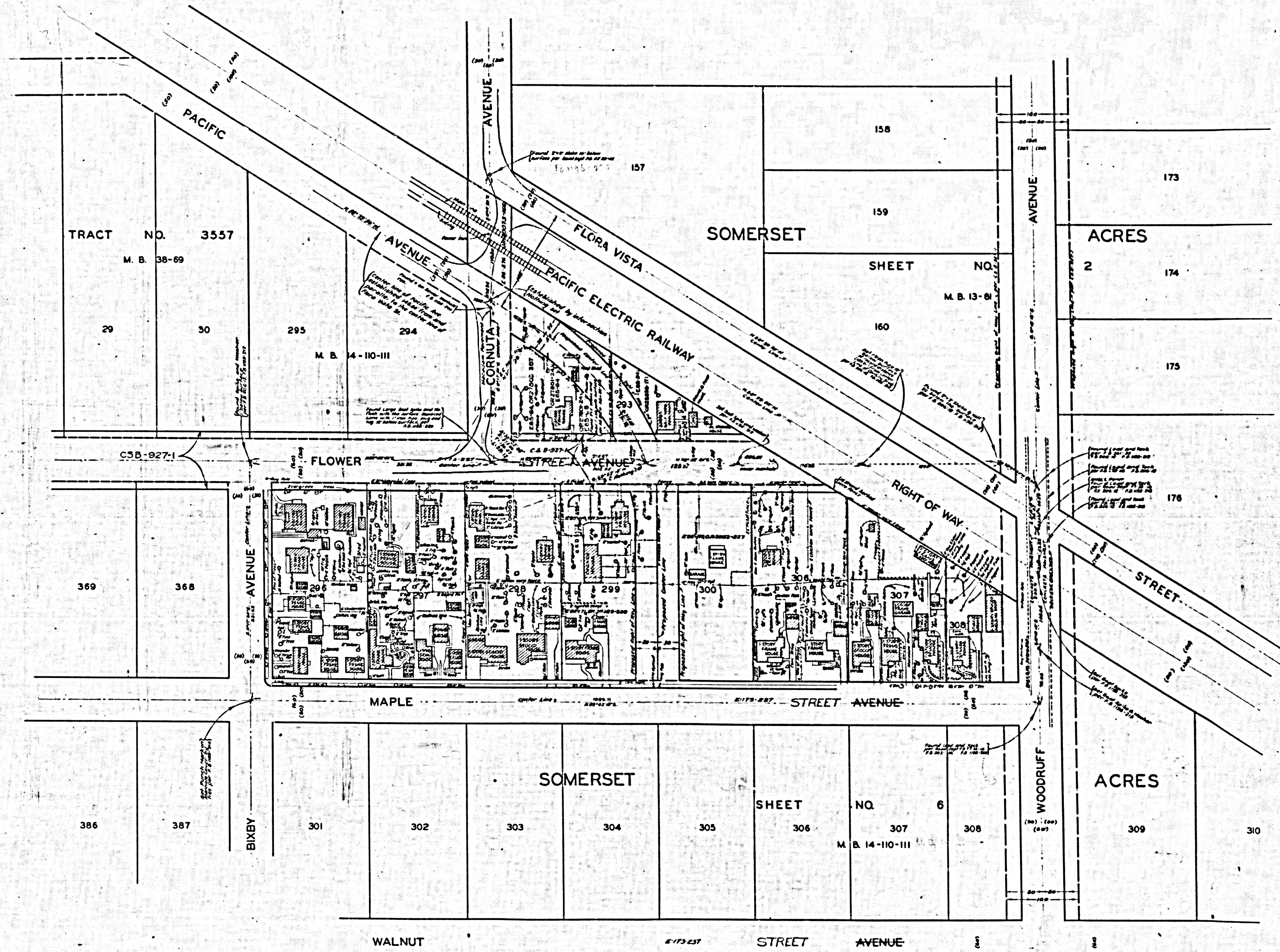
JOB NUMBER 8474
 ALFRED JONES COUNTY SURVEYOR
 SURVEYED SEPT. & OCTOBER 1947
 SURVEYED UNDER INSTRUCTIONS OF THE
 BOARD OF SUPERVISORS PER ORDER DATED
 AUGUST 12, 1947
 BEARINGS ARE BASED ON THE BEARING OF
 FLOWER AVE. AS SHOWN ON C.S.B-927-1
 F.B. 193-211-243
 FIELD WORK BY C.A. BENSON
 G.H. NICHOLS
 OFFICE WORK BY S.H. MILLER
 C.E. DROWN
 CHECKED BY S.H. MILLER
 THIS MAP FILED NOV. 1947
 C.E. ARNOLD COUNTY SURVEYOR

COMPL. 2067/1067 MAP NO. B-2067

CSB-2067
 A1 OF A2

COUNTY SUPERVISOR MAP NO. B-5063

COUNTY SUPERVISOR MAP NO. B-5063



CSB-2067
A2 OF A2